

## LL budget

(continued from page 1)

ing the board was polled to determine if a portion of early retirement incentive reserves for 1997 retirements should be added to the tentative budget. The measure lost, with most board members wanting to hold the line on the current millage.

Kopcia called for teachers to help the taxpayers in their district. "I'm requesting as a gesture of good faith to the taxpayers that the coaches volunteer their time. That would amount to a savings of over \$200,000." She went on to list other areas of student activities where parents could also contribute such as cleaning and reconditioning equipment, transportation and travel costs. She also suggested eliminating sports doctors.

The question was raised to get the teachers' feelings on the issue of voluntarily giving up pay increases or coaching salaries. Solicitor Peter Savage responded "It's possible to reopen the teachers' contract if they volunteer, but the few times I've ever seen it brought up, it was almost always unanimously rejected." The capital improvement projects planned for 1996-97, estimated to cost between \$1 million and \$1.3 million according to district architect Doug Trumbower, are not included in this budget, with other methods of financing being considered, according to Bowersox. However, he said, "The interest payment for the first year of financing is provided for in this budget, and will be continually in years after."

While expenditures are increasing, revenues have remained flat, according to Bowersox, increasing by only .4 of one percent from \$15,891,239 in the 1995-96 budget to \$15,951,033 projected for 1996-97.

Real estate taxes for 1996-97 are expected to grow only \$41,000. However, that does not include a projected figure for the improvements to the Huntsville Golf Club, because a final additional assessment has not yet been completed, said Bowersox.

The earned income tax took a dip, he explained, because the year before saw receipt of many delinquent accounts, and there is no growth expected for 1996-97.

The real estate transfer tax, from which the school district receives 1%, did see an unusual

increase in 1995-96 because of a major land transfer, but is expected to level off for 1996-97 to the normal figure of \$80,000 to \$83,000.

Other areas where revenues are diminishing are state and federal funding, which in most cases is

*"I'm requesting as a gesture of good faith to the taxpayers that the coaches volunteer their time."*

**Lois Kopcia**  
School board member

either holding at the same figure from last year or decreasing. A prime example is that while money for special education under state revenues is flat, the district projects an increase in special education students, which may also require hiring an additional special education teacher. Under federal reserves, the Chapter 1 reading program money is declining every year, said Bowersox.

"We're at a low point receiving state subsidies and will probably receive even less down the road. We have to restructure and reorient our focus to a basic, academic education," said superintendent William Price.

*"The figures they're using in this tentative budget are inflated to the worst case scenario."*

**Ed Kern**  
School board president

The fund balance going into 1995-96 was \$269,209, but at the end of the year showed a deficit primarily due to the early retirement incentives not provided for in last year's budget. "Carrying that over to the 1996-97 budget, plus no increase in revenues, and you're in a deficit," said Bowersox.

The year will end June 30 showing a deficit of \$236,473 with no fund balance to carry over. With the projected millage increase, the current deficit should be wiped out, but there will be no fund balance at the end of June, 1997.

## Slocum park

(continued from page 1)

birds' calls and the silky-smooth texture of leaves.

Adults will enjoy presentations on the park's interesting history and preventing Lyme disease.

"The ticks which spread Lyme disease aren't much of a problem in the area yet, but I believe it's safest to know your enemy," Kozlansky said.

Kozlansky says the people of the Back Mountain are fortunate to have so many wonders of nature available for study and enjoyment so close at hand. He knows every foot of the park's nearly two square miles of wetland, lake, forest and meadowland habitats.

The park boasts a 165-acre lake teeming with panfish, perch, muskies, catfish, pickerel, wall-eyes and bass, which attract anglers all year long. Rowboats, ca-

noes and boats with electric motors are allowed access with a state park launching permit at the Carverton Road boat launch and the main boat launch reached from Mount Olivet Road. Canoes and paddle boats can be rented at the concession area.

The campground, which opened in 1990, has 100 spaces, 85, for either tents or campers and 15 walk-in sites for tents only.

The park's many miles of marked trails vary in difficulty and explore its many habitats.

During the past several years, more paved paths to the picnic pavilions and a wheelchair access at the main boat ramp have been added, Barrett said.

For more information on Frances Slocum State Park, call 696-3525.

## State park offers summer youth series

Frances Slocum State Park will host Youth Environmental Learning Series, which runs for nine hours over a three day period. The programs are set to run as follows: Ages 4-5, July 17-19; Ages 6-8, July 24-26; Ages 9-13, August 7-9.

For more information or registration contact Jerry Kozlansky at 696-9105.



Holly Letoski and Amber Tolbert spruced up for the Lake-Lehman prom May 24.

POST PHOTOS/CHARLOTTE BARTIZEK



Andrea Grey, Megan Gusher, Ryan Eagan, Brian Wesley and Brian Kubasik.



Harold Roberts was ready to dig in, as his date, Kacy Ziomek looked on.



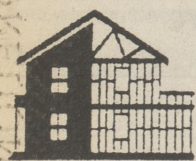
Mike Spencer and Sherisa Wilgus danced the night away.



Stephen DeLong and Ned Walsh looked sharp.



Rob Brown, who goes to Lehman, was pleased to bring Leona Miller, who attends Dallas.



## T & G Construction

Decks • Screen Rooms  
• Roofing • Siding • Additions



Licensed & Fully Insured  
Free Estimates  
**(717) 646-5409**

## PIZZA PERFECT

Sicilian Style



16 Carverton Road, Trucksville

Call Ahead **696-2100**

**Eat in or Take Out**  
**Try Our Wings!**

Mon.: 4:00 pm - 10:00 pm  
Tues., Wed., Thurs.: 4:00 pm - 11:00 pm  
Fri.: 11:00 am - 12:00 Midnight  
Sat.: 12:30 pm - 12:00 Midnight • Sun.: 2:00 pm - 11:00 pm



Discover The Pleasure...

**BEST WESTERN SEA BAY INN**

**\$99\*** SUMMER GETAWAY WEEKDAY / **\$119\*** SUMMER WEEKEND GETAWAY

\*Prices, per night, per room for 2 persons.  
Summer prices valid 6/13 to 9/8/96.

Great service at economical prices. Spacious double double or king bedded rooms equipped with a microwave, refrigerator and all the amenities of a full service hotel. Restaurant on premises. Convenient to all attractions.

All these pleasures and MORE can be discovered at  
**BEST WESTERN SEA BAY INN.**

Located at exit off Route 90  
6007 Coastal Hwy., Ocean City, MD 21842  
410-524-6100

Toll Free  
**1-800-888-2229**

Enjoy Ocean City, Maryland

