

Board honors student tutors

At a committee-of-the-whole meeting held before the regular Dallas School Board meeting, the board recognized 27 elementary and 45 high school peer tutors, who work with elementary students needing extra help in math and reading.

Fifth-graders help first-graders with spelling, reading and math facts.

"You get a special kind of friend," said fifth-grader Lacey Cooper, who described how her first-grade student reads a story and she writes down all the words he doesn't know for further work.

"You have fun and learn a lot, too," said fifth-grade tutor Maria DeSanto.

High school students, all National Honor Society members,

spend half an hour working on reading, math facts and study skills with the elementary students after they're finished with their own classes.

"It gives them some one-on-one attention that they enjoy," said sophomore Gwen Zarembo, who has tutored for two years.

"I like getting higher grades in class," said fifth-grader Steve Neiman, who has a high school tutor. "I like them. They never make fun of us. Sometimes my teacher wonders how I know so much."

Dallas Elementary principal Susan McCarthy also commended the tutors.

"You are the best anyone could ask for," she said. "The service you provide is invaluable."



There wasn't even standing room at the Monday night Dallas school board meeting.

POST PHOTO/GRACE R. DOVE

Shelly Evans

(continued from page 1)

health insurance to pay for the surgery, cancer treatments and travel expenses for his family. He had accumulated \$10,000 in medical bills before going to Buffalo for surgery.

In a letter Rosette Evans recently sent to Dale, she wrote, "Things here aren't like at Buffalo General Hospital. Almost everyone here has a private room. It's very depressing - there are lots of bald heads (on chemotherapy patients), which is the norm here. The nurses let us know this is the place to get the best medical care, but the TLC must come from friends and family."

Although his incision is healing slowly - doctors had to reopen it twice to allow it to drain - the doctors are optimistic about his prognosis, she added.

Evans will receive five doses of radiation a week for six weeks to make sure all the cancer cells remaining in his pelvic bone are eliminated.

"It's very important for Shelly to receive cards and well-wishes," Rosette wrote.

Evans loves children and ani-

mals and was very happy to receive a packet of notes and hand-drawn get well cards from a fourth grade class in Virginia who heard about him from a relative.

"Shelly loves kids' drawings and would really appreciate receiving more," Dale Fedak said. "The fourth-graders called him 'Uncle Shelly' in their notes, which he especially enjoyed."

The family is also requesting prayers for healing and strength for both Shelly and Rosette. "It's a very difficult time," she said.

If you want to help

Cards and drawings may be sent to Shelly Evans at Seventh Floor West, Room 7509, Roswell Park Cancer Institute, Buffalo, NY 14263. Well-wishes may be sent to Rosette Evans at Hope Lodge, 197 Summer Street, Buffalo, NY.

Donations to help the family defray expenses are still being accepted and may be sent to Valley View Union Chapel, Shelly Evans Cancer Fund, c/o treasurer Robert Law, 154 Jackson Street, Shavertown PA 18708.

Westmoreland

(continued from page 1)

Machovec, who presented the petitions to the board.

The PTO plans to meet with superintendent Gerald Wycallis and the architects to further discuss the district's options and their possible costs.

The board hasn't made any decisions on the elementary buildings yet, Ashbridge added. When it does, it will take 28 months to

complete all the paperwork required by the state, design the building and erect it.

The board voted unanimously to pay for the 120 advanced placement students' AP exams, which cost approximately \$70 apiece. Some students take more than one exam, Wycallis noted.

In other business the board unanimously appointed spring

sports coaches, including soccer coach John McCafferty, and approved a list of professional substitutes and nonprofessional staff.

With Joseph Kunec casting the lone dissenting vote, the board granted a sabbatical leave for travel to Arno Miller for the first semester of the 1996-97 school year.

"I believe teachers have enough

time to travel during their school vacations and the summer," Kunec said. "There's state legislation pending which could change the travel sabbatical policy."

Under present law, teachers qualify for travel sabbaticals after serving at least 10 years, the past five of which must be in the district, solicitor Ben Jones noted.

Ski racers

(continued from page 1)

Nattress took a first and a third place respectively in the individual male category, and Stacey Wagner finished second in the individual female category in both races.

"Although the other skiers haven't won individual medals, the potential is there, and they've all contributed to the team," says Nattress, who acts as coach for the group.

With the third and final race of the series coming up Saturday, Dallas looks to be a strong contender once again.

The Montage Junior Racing Program gives these young skiers plenty of conditioning between races. The program, which meets weekly Saturdays and Sundays from 9:30 a.m. to 3 p.m., consists of intense instruction and technique.

Chris Schneider, winner of two bronzes in the Keystone Games last weekend, was the first of the group to join the Junior Racing Program several years ago. He enjoyed it so much, he told friend Chris Nattress about it, who in turn convinced C.J. Tyrrell and Stacey Wagner to get involved. The four have been a tight knit bunch of skiers ever since, encouraging others their age to start racing as well.

Schneider, whose parents started him skiing at age three, says his favorite event is the giant slalom.

Stacey Wagner is one of the few successful young female ski racers in the area. Although she's been skiing since first grade, this is just her third season racing.

In addition to her two second place finishes this season in the Interscholastics, she recently dashed to a second place finish in the ASRA (American Ski Racing Alliance) giant slalom race held last month at Montage and earned three bronzes in the Keystone Games.

Stacey also competes individually in the NASTAR races at Montage, held every Wednesday and Friday evening, open to the general public. Her favorite race, she says, is "the giant slalom, because it's faster, but I like everything about skiing - not just racing."

Stacey enjoys the social benefits that come with the Interscholastic races as well. "I've made a lot of friends from other schools, and even though we compete against each other, we're still friends," she continues. "We're also very friendly with ski instructors, especially the race crew."

"We basically live up at Montage."
C.J. Tyrrell
Dallas youth ski racer

In the off season, Stacey stays in shape by mountain biking and roller blading with neighbors C.J. Tyrrell and Chris Nattress. "Roller blading is similar to skiing," she says, "and we set up gates for racing."

"Chris started cross-country skiing with his mother and me when he was only about four years old. One winter when there wasn't much snow in the woods, we decided to try alpine skiing and since Chris already had a feel for the skis, he was able to have a good time right away," said Nattress.

In addition to Chris's individual medals in the Interscholastic series, he also raced to a first place finish in a recent ASRA giant slalom at Montage and captured a gold in the dual slalom at the Keystone Games.

Chris and C.J. are also members of the PARA (Pennsylvania Alpine Racing Association) race circuit and ski competitively at various slopes. "This involves a significant commitment to practice and travel," adds Nattress. Doing well in PARA races means they can qualify for the Mid-Atlantic Championships and possibly earn a place in the Junior Olympics.

C.J. Tyrrell, who's been skiing since he was about eight years old, credits best friend Chris Nattress with getting him started in racing. "We basically live up at Montage," he says.

Like his friends Stacey and Chris, C.J. enjoys racing NASTAR and ASRA. Last weekend he collected a gold and a silver medal from the Keystone Games. "My favorite thing about racing is the competition," he says, "if you're down after the first run you have about an hour to get yourself fired up for the next run."

His least favorite thing? "Losing," he says emphatically, "and falling at those high speeds - that could ruin your whole day if it's a combined time race."

The one thing all four skiers agree upon is what keeps them committed to racing, even through the bitter cold and the biting winds, the hard falls, and the wins as well as the losses: "It's so much fun!"

What Do We Give You That Other Banks Don't?

A CHOICE!

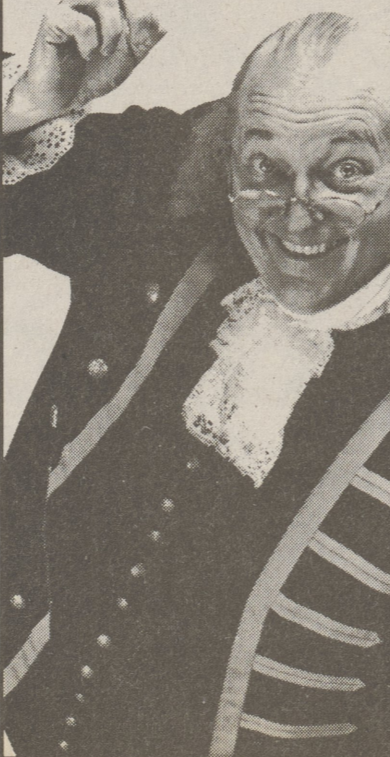


Introducing Franklin First's NEW **FIRST-CHOICESM CD**

SELECT A RATE, THEN SET THE DATE... **The Choice Is Yours!**

For example:						
Your Investment	\$2,500 - \$4,999	\$5,000 - \$24,999	\$25,000	\$1,000 - \$4,999	\$5,000 - \$24,999	\$25,000
Your Annual Percentage Yield	4.76%	4.86%	4.97%	5.39%	5.50%	5.60%
	Example is for CD due date between 7 and 11 months			Example is for CD due date between 48 and 60 months		
CD Due Date	Your Choice	Your Choice	Your Choice	Your Choice	Your Choice	Your Choice

*\$1,000 minimum deposit required for term of 1 year or more. \$2,500 minimum for terms of less than 1 year. See any Franklin First office for other terms and Annual Percentage Yields.



At last! A savings and investment plan that has your best interest at heart. Franklin First's new First-ChoiceSM Certificate of Deposit provides the flexibility to create a personalized savings program. Imagine. Being able to name the month you want your CD to come due. Any month...between three months from now and sixty months from now!

First-ChoiceSM puts you in command of your money!

The more you invest with First-ChoiceSM the more interest you will earn. Now, not only can you control the timing of your CD, you can control how much your money earns.

When it comes to planning your future, see the Bank that gives you a choice in the matter. See Franklin First. Call us at (717)-821-7100, or toll free: 1-800-262-1210.

FRANKLIN FIRST



Subsidiary of ONBANCORP, INC.
Member Federal Deposit Insurance Corp.

One Day We'll Be YOUR Bank

*Minimum balance required to open the account and obtain the Annual Percentage Yield. Annual Percentage Yields accurate at time of publication and may be subject to change. Penalty for early withdrawal.