

### Area students named to King's Dean's List

The following area students were named to King's College fall 1995 semester dean's list, signifying a grade point average of 3.4 or higher: Jennifer Jones, Lance Wega, Joseph Hudak, Heather Brody, Christopher Good, Erin Brennan, Melanie Belles, Mark Finarelli, Karin Wartella, Alison Roskos, Dallas; Judith Andrejko, Shavertown; Carrie Reid, Trucksville; Jeffrey Krehely, Patricia Snyder, Amber Roses, Pamela Conway and Sara Karlowicz, Shavertown.

### Named to Bucknell Dean's List

Dallas resident William Michalsin was recently named to Bucknell University's dean's list for outstanding academic achievement during the fall semester of the 1995-96 academic year. A student must earn a grade point average of 3.5 or higher on a scale of 4.0 to receive Dean's List recognition. He is the son of Nicholas and Bonnie Michalsin.

### Named to Kutztown Dean's List

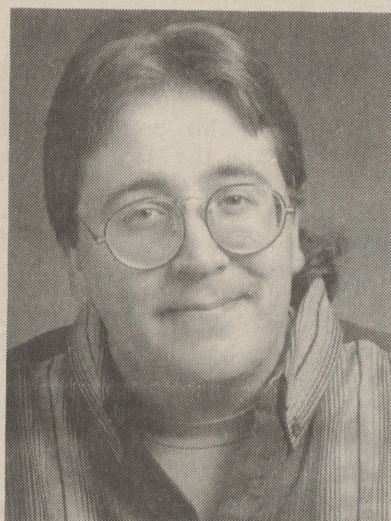
Dallas resident Brian M. Jordan was recently named to Kutztown University's Dean's List for the fall semester 1995. To be named to the Dean's List, students must earn a quality point average (QPA) of 3.60 out of a possible 4.00 and be registered for at least 12 credits.

## Jones receives radio award

Kevin Jones, Harveys Lake, a student at Luzerne County Community College, was recently nominated for a National Radio Production Award sponsored by the National Association of College Broadcasters (NACB).

Jones was one of five students from across the country nominated for the best promotion/public service announcement.

Jones' production, "Monk Promo," was written for LCCC's radio station, WSFX. It was selected by the NACB based on achievement and a demonstration of excellence or development in content, creativity, production, presentation, information, and relevance to audience.



KEVIN JONES

### Named to Shippensburg's Dean's List

Three Dallas residents have been named to Shippensburg University Dean's List: Brian David Fett, an earth science major; Karen Ann Kocher, an accounting major and Anthony Mario Massara, majoring in English and secondary education.



### SCHOOL MENUS

The following school lunch menus are for the week of February 8 - 14. All lunches include milk.

#### DALLAS SCHOOLS

**THURSDAY** - French toast sticks w/sausage-syrup or Sloppy Joe on bun, potato wedges, cinnamon applesauce.

**FRIDAY** - Grilled cheese or Sloppy Joe on bun, tomato soup/crackers, fresh fruit.

**MONDAY** - Chicken nuggets or hot dog on bun, buttered noodles, green beans, chilled pears.

**TUESDAY** - French toast sticks w/sausage-syrup or hot dog on bun, potato wedges, rosy applesauce.

**WEDNESDAY** - Hot turkey sandwich/gravy or hot dog on bun, sweet potatoes, golden corn, ice cream treat.

#### GATE OF HEAVEN SCHOOL

**THURSDAY** - Chicken noodle soup, carrots, saltines, peanut butter jelly sandwich, peaches.

**FRIDAY** - Pizza, salad, pears.

**MONDAY** - Hot ham-cheese on bun, potato rounds, carrots, pineapple.

**TUESDAY** - Hamburg w/bun, cheese, wax beans, fruit cocktail.

**WEDNESDAY** - Chicken nuggets, corn, roll, pears.

#### LAKE-LEHMAN SCHOOLS

**THURSDAY** - Hot roast beef/roll, parsleyed potatoes, peas-carrots, warm spiced apple slices.

**FRIDAY** - Pizza or peanut butter-jelly sandwich, carrot/celery sticks, potato chips, pear slices.

**MONDAY** - Chicken patti/bun w/lettuce-mayo, vegetable soup/crackers, cinnamon applesauce.

**TUESDAY** - Salisbury steak, mashed potatoes w/gravy, garden peas, dinner roll, vanilla pudding.

**WEDNESDAY** - Deli hoagie, French fries, mixed garden vegetables, white cake w/cherries-topping.

#### WEST SIDE TECH

**Breakfast**  
**THURSDAY** - Hot ham-cheese/roll or cereal, pastry, juice.

**FRIDAY** - Blueberry coffee cake, cereal, orange wedge, juice.

**MONDAY** - Banana bread, choice of cereal, apple juice, fruit.

**TUESDAY** - Banana bread, cereal, orange juice, fruit.

**WEDNESDAY** - Sausage-cheese/bun or cereal, juice, fruit, pastry.

#### Lunch

**THURSDAY** - Open face turkey sandwich, mashed potatoes, steamed peas, sweet potato pie.

**FRIDAY** - Grilled ham-cheese, chicken vegetable soup, tossed salad/dressing, choice of fruit.

**MONDAY** - Tuna/turkey hoagie w/lettuce-tomato, potato puffs, blueberry muffin.

**TUESDAY** - Chicken patty/soft bun w/lettuce-tomato, fresh carrots-peas, chilled pineapple.

**WEDNESDAY** - Hamburger or cheeseburger on roll, vegetable beef soup/crackers, lettuce-tomato, sweetheart cake.



### 'The Beatles' visit Dallas Middle School

Recently Mrs. Elaine Williams' Dallas Middle School English classes participated in an unusual assignment, to read a biography or auto-biography, and to speak in costume to their class on the topic: "If this person were alive today, what message would he want to share with the eighth-graders at Dallas?" Students who presented the Beatles program were, from left, Sarah Nichol, Abbie Pisacano, Jennifer Noon and Anna Lloyd.

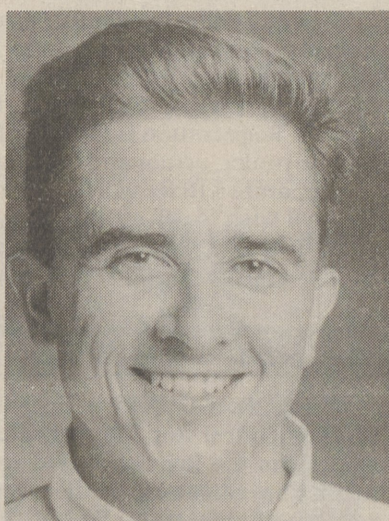
## Phillips will teach at LCCC

James J. Phillips, R.D., of Dallas, recently accepted a position at Luzerne County Community College as assistant professor for Food Production Management.

Phillips received an associate degree in Hotel and Restaurant Management from LCCC and a B.S. degree in Dietetics from Marywood College.

Phillips is a Registered Dietitian and a member of the American Dietetic Association.

He resides in Dallas with his wife, Sue, and daughter, Devin.



JAMES J. PHILLIPS, RD

## Claire Hedden named Sem's December student of month

Claire Hedden, a senior at Wyoming Seminary, was named Student of the Month for December by the Kingston Lions Club.

Hedden, the daughter of Mr. and Mrs. Carl Hedden of Dallas, has been named to the Dean's List with high honors.

A field hockey and soccer team member in grades nine through 12, she was named field hockey MVP in her junior year, and is the field hockey co-captain this year.

She was awarded a Levi Sprague Fellowship Scholarship for her senior year, is a member of the AIDS Awareness Group, the Peer Group, the SAVE environmental group, and the Board of Student Appeals.

Hedden also serves as acolyte for St. Stephen's Episcopal Church, and has volunteered through the Teens Do Care nursing home visitation program.



CLAIRE HEDDEN

Hedden is interested in a career in fine arts, concentrating in sculpture and ceramics.

## Comedians on stage at Penn State

Two stand-up comedians will perform at Penn State Wilkes-Barre's second annual Comedy Night February 8, 8 p.m. on the campus in Lehman. The program will be held in the Student Commons Lounge, and is free and open to the public.

Michael Dean Ester, a native Pennsylvanian, has performed in many of the top-rated comedy clubs in the northeastern United States and Canada. His comedy draws from everyday life, fusing small town enthusiasm with a metropolitan cynicism.

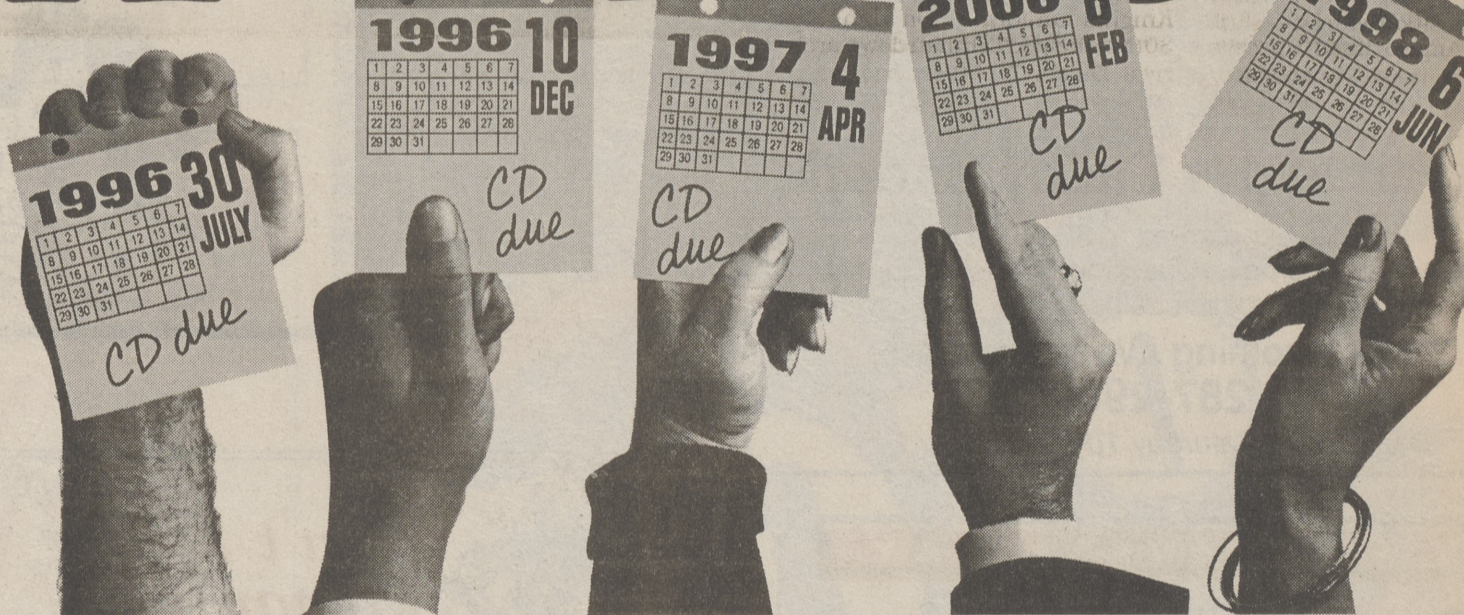
Tony Powell's refreshing, nar-

rative approach to comedy grabs an audience's attention must like his idol, Bill Cosby. His engaging personality on stage belies his tough East New York section of Brooklyn upbringing. Though he can woo an audience with his funny storytelling ability, he's best known for his impressions of Eddie Murphy, Richard Pryor and Bill Cosby.

Penn State's Comedy Night is sponsored by the Student Life Office and the Student Government Association. For more information, call the Campus at 675-9284.

What Do We Give You That Other Banks Don't?

# A CHOICE!

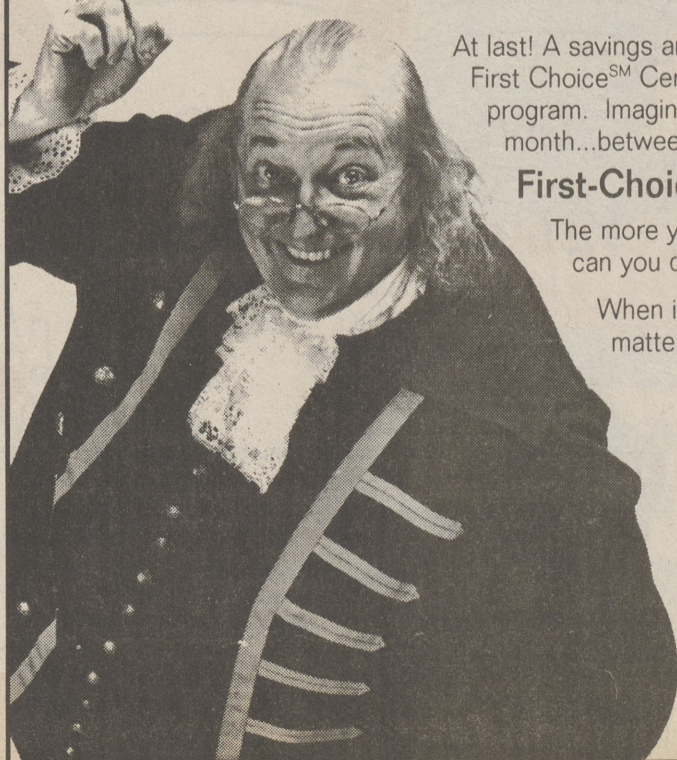


Introducing Franklin First's NEW **FIRST-CHOICE<sup>SM</sup> CD**

SELECT A RATE, THEN SET THE DATE... **The Choice Is Yours!**

For example:						
Your Investment	\$2,500 - \$4,999	\$5,000 - \$24,999	\$25,000	\$1,000 - \$4,999	\$5,000 - \$24,999	\$25,000
Your Annual Percentage Yield	4.76%	4.86%	4.97%	5.39%	5.50%	5.60%
	Example is for CD due date between 7 and 11 months			Example is for CD due date between 48 and 60 months		
CD Due Date	Your Choice	Your Choice	Your Choice	Your Choice	Your Choice	Your Choice

\*\$1,000 minimum deposit required for term of 1 year or more. \$2,500 minimum for terms of less than 1 year. See any Franklin First office for other terms and Annual Percentage Yields.



At last! A savings and investment plan that has your best interest at heart. Franklin First's new First Choice<sup>SM</sup> Certificate of Deposit provides the flexibility to create a personalized savings program. Imagine. Being able to name the month you want your CD to come due. Any month...between three months from now and sixty months from now!

**First-Choice<sup>SM</sup> puts you in command of your money!**

The more you invest with First-Choice<sup>SM</sup> the more interest you will earn. Now, not only can you control the timing of your CD, you can control how much your money earns.

When it comes to planning your future, see the Bank that gives you a choice in the matter. See Franklin First. Call us at (717)-821-7100, or toll free: 1-800-262-1210.

## FRANKLIN FIRST



Subsidiary of ONBANCORP, Inc.  
Member Federal Deposit Insurance Corp.

One Day We'll Be YOUR Bank

\*Minimum balance required to open the account and obtain the Annual Percentage Yield.  
Annual Percentage Yields accurate at time of publication and may be subject to change. Penalty for early withdrawal.