

# Consultant recommends all schools on one site

## Westmoreland would be closed, new school built adjacent to Middle School

By GRACE R. DOVE  
Post Staff

DALLAS - Quad Three Group engineer Paul Degillo presented six different plans for expansion of the elementary school and developing the vacant land behind the stadium into sports fields, with their estimated construction costs, to the school board at its regular October 9 work session.

The district had hired the firm to do a feasibility study of developing the fields and expanding the elementary schools in July.

In the option which Degillo said Quad Three recommended, all schools would be consolidated on the 100-acre site on Hildebrandt Road and Conyngham Ave., with a new building for grades four through six built on the baseball field behind the middle school. It would be connected by a walkway to the middle school so the building's 425 students could use the auditorium, but would have its own library, gym and cafeteria.

The 650 students in kindergarten through grade three would be housed at the present Dallas Elementary School. The Westmoreland School and the present central office would be closed, with the central office relocated to a new wing added to the side of the middle school near the tennis courts.

No modifications would be made to the high school, but the vacant land behind the high school stadium would be developed into athletic fields. The total construction cost would be \$5.2 million.

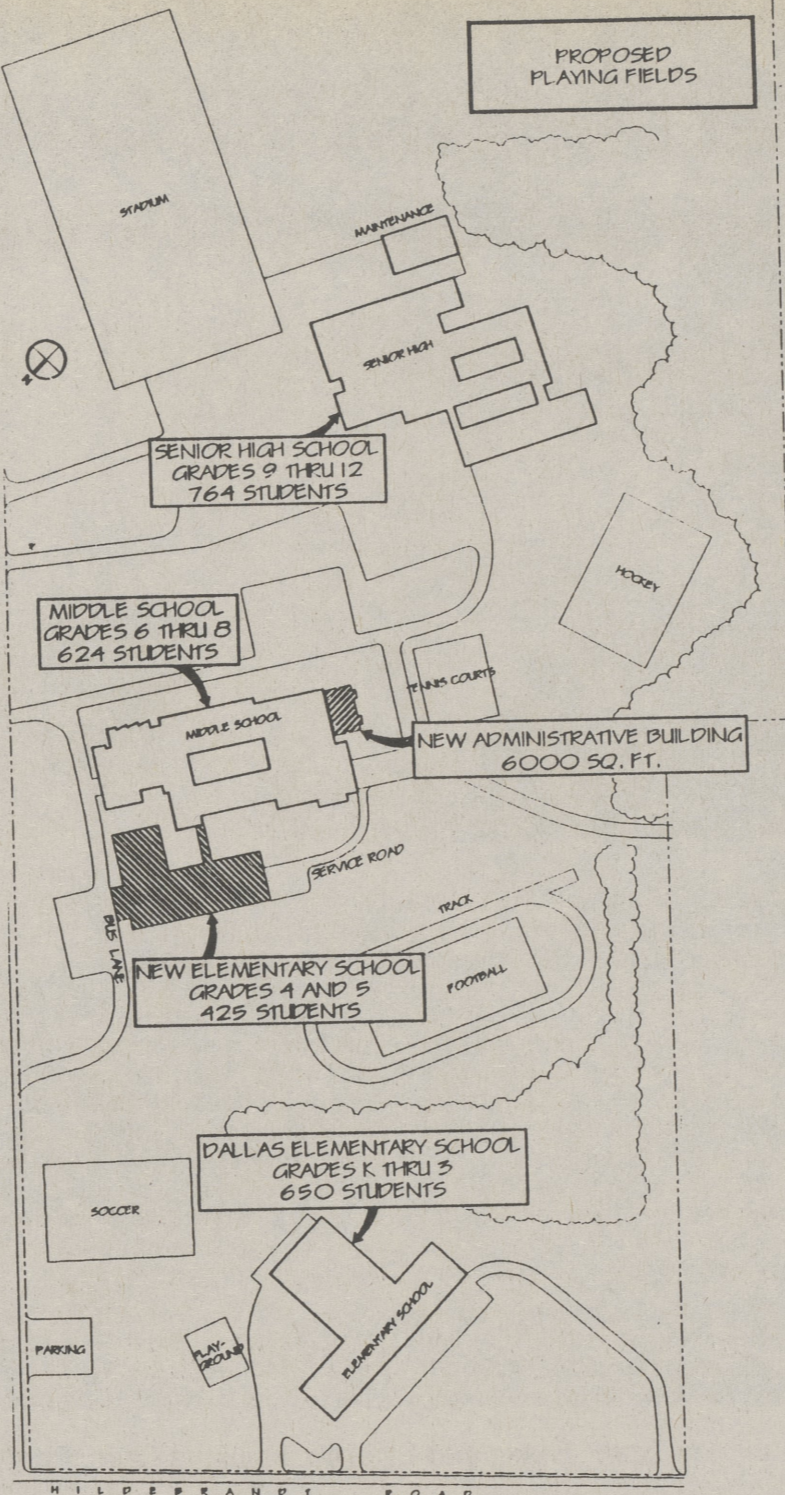
One reason we recommend it is because the district would get the highest rate of reimbursement

from the state for this plan," Degillo said after the meeting. He couldn't give any figures or percentages of the amount of reimbursement the district would receive. "All figures are for construction costs only and don't represent the final cost of the project," he added.

Another option called for the renovation of the Westmoreland School, with six more classrooms added to replace the modular units, and a new central office added to the middle school, at a total cost of \$3 million. This plan wouldn't receive much reimbursement from the state because it won't pay for renovations which cost more than 60 percent of a building's replacement value, Degillo said.

The other plans, which call for the closing of the Westmoreland building and a new central office added to the middle school, involved making the Dallas Elementary School one large building to house all the district's students in kindergarten through grade 5 for \$5.4 million, building a separate building for grades three through five alongside the present elementary school for \$7.2 million, tearing down the Westmoreland School and building a replacement on the same site for \$5.4 million or building an addition behind the middle school to house grades three through five for \$7.2 million.

Maureen Banks's suggestion to build a second school to house the Westmoreland students alongside but not connected to the Dallas Elementary School, wasn't feasible because too many facilities would be duplicated, Degillo said.



PLAN COURTESY OF QUAD THREE GROUPS  
This plan shows the proposed elementary school to be built behind the Dallas Middle School, where a new central office would also be added in a wing on the side. Playing fields would also be developed behind the high school and stadium.

# Planner

(continued from page 1)

supervisors' haste in appointing a new planning commission member.

"Last week you said to wait a month to give you time to review the applications," he said to Redmond. "What's the rush to justice? Why not wait until you can appoint a second replacement?"

"If we don't have a fourth member, we'll have to cancel our October 10 meeting," Redmond said.

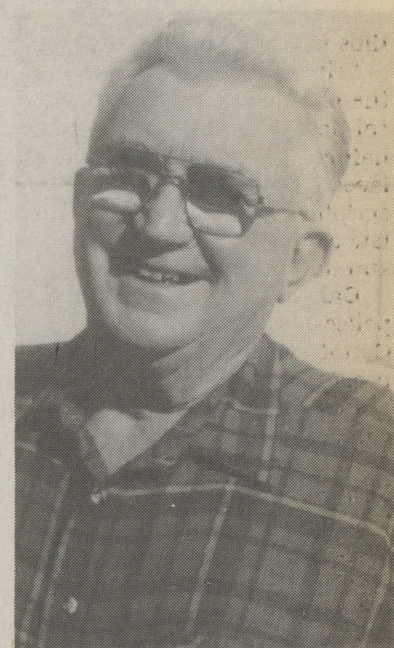
"So cancel it!" Futch fired back. Bellas questioned the short time span - 1 1/2 days - which applicants for the two positions on the commission had to submit their resumes to the supervisors, who didn't answer his query.

Another applicant, Toby Humphrey, wanted to know why the supervisors had passed him over for this position and asked to see the other applicants' resumes, which he said he is allowed to do under the state's Sunshine Law.

"The others had better qualifications," Redmond said. "Me and Tim (Dymond) reviewed all of them." The audience laughed. He added he would take Humphrey's request to see the other applications "under advisement with the solicitor."

Granger, a retired civil engineer and contractor, is a native of Wyoming, PA, and moved to the township in 1989. "I'm a newcomer," he wisecracked. He applied for the position because "I thought I could make a difference. I have some expertise in these areas."

At two work sessions, held October 2 and October 9 at 3:15 p.m., the supervisors debated the definition of junk, junk yards and junk cars. Although junk was defined as "scrap or reclaimable material, discarded machinery or parts thereof," residents said one person's junk is another person's



POST PHOTO/GRACE R. DOVE  
Steuben Granger was appointed to the Franklin Township planning commission at a special meeting October 9.

spare parts. Attorney John Acieukiewicz questioned the proposed minimum lot sizes of three acres in the agricultural zone and four acres in the conservation zone. "You only need to make the lots large enough to sustain the dwelling, its water and its sewage," he said. "If you want to set minimum sizes of more than an acre, you must prove that some type of extraordinary conditions exist. Otherwise it might not stand up if it were to be challenged in court."

According to consultant Jack Varaly, smaller lot sizes may eventually conflict with state-mandated sewage planning modules or storm water runoff regulations.

The supervisors plan to meet October 26 at 7 p.m. to vote on the proposed zoning ordinance amendments.

# Music Box to hold auditions for musical October 14-15

The Music Box Players will hold auditions for their final production of the 1995 season: *The Most Happy Fella*, October 14, at 1-3 p.m. and October 15 at 7 to 10 p.m. at the Music Box Dinner Playhouse, 196 Hughes Street, Swyersville.

All roles are open and include Tony, a middle-aged man (40's+ and a baritone), Rosabella, a young woman in her 20's, early 30's and a soprano. Other principals include Cleo, an alto in her 20's to early 40's; Joey, a young baritone in his 20's or 30's; Herman a tenor in his 20's; Tony's sister, an alto in her 40's, 50's and Tony's doctor. Also needed is a chorus of

farmhands, bakers, cooks, and townspeople.

All interested in auditioning should come prepared to sing a song of his/her choice and those interested in speaking roles will be asked to read from the script.

A dance audition will be held at Sunday's audition only.

Production dates for *The Most Happy Fella* are Nov. 24-26, Nov. 30, Dec. 1-3, 7-10, and 14-16. Rehearsals will begin the week of October 23.

For an audition appointment or for further information, call the Playhouse box office at 283-2195 or 1-800-698-PLAY.

# Support a hometown paper The Dallas Post

**Five board certified physicians, one reliable source for the quality primary health care your family needs.**

First row, from left: Gary Nottstein, D.O., Irvin Jacobs, M.D., Jane E. Durkin, D.O., Diane A. Love, M.D., Thomas M. Campbell, M.D.

Board-certified physicians, on call 24 hours a day, 365 days a year.

In-office diagnostic testing, including: X-ray, EKG, Holter monitor, blood pressure and glucose monitoring, vision/hearing tests and pulmonary function tests.

MOST HEALTH INSURANCE PLANS ACCEPTED

We look forward to seeing you at our new facility providing greater convenience and easier access, with a spacious clinic and modern outpatient diagnostics suite designed with your wellness in mind:

100 Upper Demands Road  
Dallas, PA 18612  
675-2111

**DALLAS FAMILY PRACTICE**

Office hours by appointment:  
Monday through Friday, 7:00 a.m. - 8:00 p.m.  
Saturday, 10:00 a.m. - 3:00 p.m.  
Sunday, 1:00 p.m. - 3:00 p.m.

An affiliate of WYOMING VALLEY HEALTH CARE SYSTEM

## PIZZA PERFECT

### Sicilian Style

PIZZERIA

16 Carverton Road, Trucksville

Call Ahead **696-2100**

**Eat in or Take Out**

**Try Our Wings!**

Mon.: 4:00 pm - 10:00 pm  
Tues., Wed., Thurs.: 4:00 pm - 11:00 pm  
Fri.: 11:00 am - 12:00 Midnight  
Sat.: 12:30 pm - 12:00 Midnight • Sun.: 2:00 pm - 11:00 pm

## WANTED TO BUY

**Paying Cash for**

- Silver Coins
- War, Buffalo Nickels
- Silver Dollars
- U.S. Gold Coins
- Indian Head Pennies
- Gold & Silver Jewelry

**Ochman**  
COINS & JEWELRY  
18 Church Street  
Dallas, Pennsylvania  
Next to CVS (formerly Rea & Derrick)

**675-5872**

Mon., Tues., Wed.  
10 A.M.-6 P.M.  
• Thurs. 10 A.M.-8:30 P.M.  
• Fri. 10 A.M.-7 P.M.  
• Sat. 10 A.M.-6 P.M.  
• Sun.-Closed

OCTOBER IS  
CUSTOMER APPRECIATION MONTH

## THANK YOU SPECIALS

**2¢ COPIES**  
Limit 500 per customer,  
8.5" x 11" White paper.

**49¢ FAX**  
Sending & Receiving,  
Continental U.S. transmissions only,  
per page. Phone charges may apply.

**\$2 OFF SHIPPING**  
UPS® overnight only. One per customer, per day.

**MAIL BOXES ETC.**

It's NOT WHAT WE DO. It's HOW WE DO IT.

62 Dallas Shopping Center TEL 717 674-2429  
309 Memorial Highway or 674-2430  
Dallas, PA 18612 FAX 717 674-2431

Offer is limited to participating Mail Boxes Etc.® Centers. Expires October 31, 1995. Restrictions may apply. Mail Boxes Etc.® Franchised Centers are independently owned and operated. ©1995 Mail Boxes Etc.®

## Are You Drinking SKIM MILK

**For Health Reasons?**

If so, have you tried  
**Hillside Farm's Skim Milk?**

Our Skim Milk is now our leading Milk product; we sell well over 1,000 gallons a week

**Maybe our customers are on to Something Good - Try it!**

Hillside Farms Dairy Store  
Hillside Rd., Trucksville

1/2 Gallon Glass Bottles  
or  
Gallon Pouch Package

Hillside Farms Ice Cream Store  
Tunkhannock Highway  
next to Gino's Shoes

Gallon Pouch Package