

# ASK AN EXPERT

The professionals and specialists on this page have studied and worked to become expert in their fields. They are ready to serve you with their knowledge.

Ask an Expert is an advertising feature of *The Dallas Post*. We use readers' questions whenever possible. The answers and opinions are those of the individual advertiser, and not necessarily those of *The Dallas Post*.

## ATTORNEYS

Q: How can a lawyer help me with selling or buying a business?

A: Selecting a lawyer who practices business law and understands the legal and financial aspects of your business can help you make the right decisions in buying or selling a business. A well drafted purchase agreement will require full disclosure from the other party, guide you in the "due diligence" process of investigating the business that you are purchasing, and provide you with a means of recourse for any undisclosed liabilities and obligations of the seller. A well drafted sales agreement will provide you with the best available protection in securing payment of the purchase price and limit your responsibility for business risks that should rightfully be assumed by the purchaser.



Bruce C. Rosenthal Esquire

Rosenn, Jenkins & Greenwald, L.L.P.  
Attorneys at Law  
15 South Franklin St.,  
Wilkes-Barre, PA 18711-0075  
(717) 826-5636

## BANKING

Q: Is convenience an important factor when choosing a bank?

A: If so, you can now add convenience to your grocery list! Save time and enjoy full-service banking at Pioneer American Bank's super-market location inside the Mr. Z's Market in Dallas. Stop after work or on a Saturday or Sunday...Now Easy Banking Is In The Bag!!!



Carol Novajosky, Community Office Manager

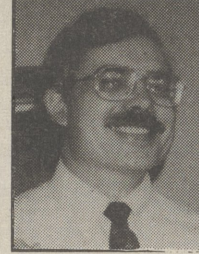


Route 415, Memorial Highway, Dallas, PA 18612  
675-1429

## CHIROPRACTIC

Q: What did the first Chiropractic patient have?

A: In 1895, an incident of world-wide historical human value took place. Eighteen years previously, Harvey Lillard became deaf. He was in a stooped, cramped position when he heard "something pop" in his neck. He was deaf for 18 years.



Albert Klein

In his neck was a large visible bump. Fortunately, it could be seen, otherwise it might have gone unnoticed. D.D. Palmer said: If the production of that bump produced deafness, reduction should restore hearing. He pushed the bump, three days in succession the bump was gone, and hearing was restored. Fortunately, that bump was reduced; fortunately, hearing was restored. That incident started and established a truth heretofore unknown and unused. The Chiropractic philosophy of Health. "That real health comes from a above-down-inside-out (Brain to tissue cell) and that anything that reduces that flow (particularly misplaced spinal bones - subluxations) can & will make you sick."

**Klein Chiropractic**  
N. Memorial Hwy., Dallas, PA 18612  
675-3833

## COMPUTERS

Q: Does Windows '95 replace the Windows I am using now?

A: Yes. It will also replace the current DOS you are using. It is an entirely new operating system. As long as you meet the minimum hardware requirements, you can upgrade and take advantage of this revolutionary new product and its features. It's due at the end of August, don't miss out!



Tom Applegate Service Manager

Northeast Micro Computer Systems  
222 Wilkes-Barre Township Boulevard,  
Wilkes-Barre, PA 18702  
(717) 826-7060

## COUNSELING

Q: What can I do when I feel overwhelmed by the stress in my life?

A: If stress gets out of control for you, it may be time to visit your family physician or a specialist in mental health. Signs of stress include: tightness around the head or chest, rapid heartbeat, stomach in knots, trembling limbs, dry mouth, sleeplessness, numbness or weakness, and diarrhea, nausea, dizziness or faintness. Exercise, good nutrition, and relaxation techniques can all help you deal with the stress in your life. For more information on Stress Management Call 823-2155.



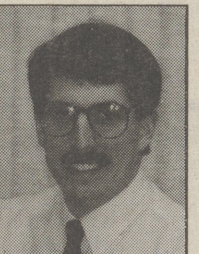
Mary Ann Yenason Licensed Psychologist

Community Counseling Services of N.E. PA  
110 S. Pennsylvania Ave., Wilkes-Barre  
99 Bridge St., Tunkhannock  
823-2155 or 836-3118

## DENTIST

Q: Must wisdom teeth be removed?

A: Wisdom teeth (third molars) must be removed if they are a source of infection or pain, cause cyst growth around an impacted tooth, or move teeth when not desirable. When wisdom teeth cause pain or infection people go see the dentist for treatment. Dentists check impacted wisdom teeth with X-rays taken periodically, usually every 3 to 5 years. With these films, cyst growth will show up easily. Cysts always are removed and tested pathologically for abnormal cells. The majority of these cysts are benign. Wisdom teeth, when they erupt, may move the front teeth to create a crowded condition. Those persons who have had orthodontics may not want this result. If you are not sure what to do with your wisdom teeth, go see your dentist.



David H. Spring D.M.D.

**David H. Spring D.M.D.**  
Gentle Family Dentistry  
661 N. Memorial Hwy., Dallas, PA 18612  
675-7796

## EYE CARE

Q: I'm over 65. My eyes often burn and itch - is this strange?

A: Seniors are Special and Back Mountain EyeCare Center is especially sensitive to their special needs. Many seniors experience burning or watery eyes, as well as problems with their tear ducts...this is not unusual at all for this age - However, special care should be taken with these conditions. We have successfully treated many seniors for these problems and have many treatment options. And, at Back Mountain EyeCare Center, each patient, from infant to senior, is treated with the utmost of respect and the best possible care.



Dr. Curtis Goodwin

**Back Mountain EyeCare Center**  
170 N. Memorial Highway, Shavertown, PA  
675-3627

## FAMILY PRACTICE

Q: Can low iron cause fatigue?

A: Iron is one of the necessary components of red blood cells. These cells are the ones that carry oxygen from the lungs to the rest of the body. If there is not enough available iron, symptoms such as fatigue and shortness of breath may be present.



Diane A. Lowe, M.D.

In young and middle-aged women, iron deficiency is very common due to blood loss during the menstrual period. In men and older women anemia due to low iron stores may indicate a loss of blood in the stomach or bowels. Your doctor will advise if other testing is necessary to find the cause. Treatment with iron tablets usually corrects the symptoms in a few weeks. Treatment should be continued for 6-12 months to build iron stores back to normal levels.

**Dallas Family Practice**  
100 Upper Demunds Rd., Dallas  
675-2111

## GEMOLOGIST

Q: I recently had repair work done on my diamond engagement ring. How can I be sure I got my diamond back? You see so much on T.V. and in the paper about stones being switched.

A: A diamond, like a fingerprint, is unique in color, clarity, weight and cut. No two are exactly alike. In light of each diamond's individual characteristics, there are several ways you can positively identify your stone.

Your diamond may be formally plotted by the G.I.A. (Gemological Institute of America). This is a complete and detailed description of your stone accompanied by a certificate. It costs approximately \$100.00 and takes several weeks to get. A similar appraisal and diagram can be done by a local G.I.A. certified jeweler at a more moderate cost, about \$35.00-\$50.00. Jewelers with the DIAVIEW SYSTEM can offer yet another cheaper and more expedient option. They are able to take a magnified photograph of your diamond that would show its unique markings for a comparatively inexpensive amount, \$10.00 to \$15.00.

Traveling out of town, the country or in large metropolitan areas and having to take your stone in for emergency work can be unsettling. It's comforting to be able to positively identify your diamond.

It's always best to deal locally with a well known company or a reputable established firm. Then you may rest assured the stone you get is the one you left.



Jay Kamofsky, President

since 1887  
**Bartikowsky**  
Jewelers  
141 S. Main St., Wilkes-Barre • 823-7111

## GOURMET COOKING

Q: While using the barbeque grill, when is the best time to salt meats.

A: You should avoid using any salt before cooking. This would include in your marinades. Placing salt on meats draws out the natural juices while cooking. Use salt only after cooking.



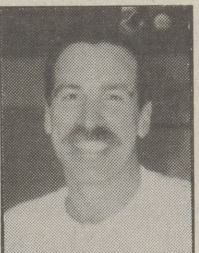
D.H. Oliver

**D.H. Oliver**  
550 Memorial Hwy., Dallas  
675-0790

## HEALTH & FITNESS

Q: I'm thinking about a wellness program for our company but I'm not sure about how it will help?

A: There are plenty of benefits - tangible and intangible! Productivity increases, absenteeism decreases, health benefits are used less, workers compensation reductions, fewer injuries and lower turnover also help in less time and money spent in recruitment and training. Some intangible benefits include higher morale, more loyalty and improved employee decision making.



Bill Ranieri

Serving on the committee of Injury Prevention & Early Return to Work for the Association for Worksite Health Promotion and going on-site for different companies has allowed me to see wellness programs make a big difference first hand. Call for more details 675-6554.

**One-to-One Fitness**  
417 Memorial Highway, Dallas  
675-6554

## INSURANCE

Q: We rent an apartment - do we need insurance?

A: Yes, most definitely. Your landlord's insurance will only cover the building and injuries that are caused by him or her. Your furniture, clothes, and household items are not covered by the building owners coverage and need to be covered by a renters policy that provides fire, theft, burglary, windstorms, smoke and many other perils of loss. Also included in the renters policy is family liability that covers injuries or property damage claims caused by the tenant. Such as: slips and falls due to ice or snow; dog bites; hunting accidents; and acts of children. A typical \$10,000 renters policy with \$100,000 liability runs about \$50 per year in Dallas and qualifies you for a Nationwide Auto Insurance Discount at Gordon Insurance Agency, 675-5234.



William T. Huck

**NATIONWIDE INSURANCE**  
Nationwide is on your side  
Gordon Business Center, Suite 1,  
194 N. Memorial Highway, Shavertown, PA 18708  
675-5234

## INVESTMENT

Q: What is Technical Analysis?

A: Technical analysis is the quantitative study of the price and volume movements in securities. Utilizing charts of markets or individual securities it provides important information about the expected directional movement of a security or index. Used in conjunction with the fundamental factors, such as a company's earnings, products, finances, markets and management, technical analysis can be a strong ally for investors; helpful in determining when to buy or sell rather than what security to buy or sell. If you wish more information on the merits of technical analysis, or the technical prospects for your particular investment holdings, call our office.



John F. Gager Registered Principal

**Gager & Associates**  
Box L, 2 Woodland Drive, Dallas, PA 18612  
(717) 675-7200

## PLUMBING & HEATING

Q: What should I look for in a water heater?

A: With all the new technology it is not a simple answer. Today you have many choices to consider. However, it is important to every homeowner to know that it just makes good sense to replace your old unit with a high efficiency model. Remember to check the warranty because life-time units are available. It is also cost effective to check your heat source. Sometimes a switch to an alternative heating source can add up to additional savings.



Cliff Parker

**Parker Fuel Co.**  
1016 Lower Demunds Road  
Dallas, PA 18612  
675-4949 or 675-1155

## REAL ESTATE

Q: Should we remodel our kitchen prior to putting our home on the market?

A: Buyers pay particular attention to the home's kitchen, especially its age, cleanliness, layout, storage and available counter space. If your cabinets are dated but in good condition, you might consider refacing rather than replacing. Changing a countertop, and replacing knobs and hardware can update a kitchen and make a surprising difference. Remove the clutter from your countertops and reorganize your cabinets. Be sure the faucets don't leak, clean the stove and oven. Change the carpet or linoleum if they are worn. All this is more economical than total remodeling and should have a positive influence on buyers.



Muriel Farrell

**Century 21**  
Jean Innamorati, Realtor  
Muriel Farrell  
Associate Broker / Manager / Marketing Consultant  
(717) 675-2159

## SUBSTANCE ABUSE

Q: Is Alcoholism/Drug Addiction a curable disease?

A: My philosophy is that Chemical Dependency is a treatable illness, be it alcohol or drug related. Those who suffer from chemical dependency are frequently in need of acute care within a hospital setting. The person in need of detoxification receives the care needed on a medically safe, comfortable environment. Following detoxification and close medical monitoring, a quality comprehensive treatment program should be based on principles of proven effectiveness and state of the art treatment modalities. A specially selected multidisciplinary treatment team can then provide the enthusiasm and commitment to bring the treatment program to life. Continuity of care is vital to recovery. The use of community support groups (AA, NA, Al-Anon) is essential to the life-long recovery process.

Robert G. Migliosi, BA D. & A. Therapist

**CHOICES**  
WYOMING VALLEY HEALTH CARE SYSTEM  
For The Comprehensive Treatment Of Drug And Alcohol Abuse  
518 Wyoming Avenue, Kingston, PA 18704  
717-283-2388 • 1-800-762-9492

**Have a Question?** Ask an expert to answer it. Send your questions to the Expert of your choice, c/o The Dallas Post, P.O. Box 366, Dallas PA 18612. Deadline for questions is the 20th of each month.