

## Penn State starts human resource certificate program

Penn State Wilkes-Barre's continuing education department announces a new 18-credit certificate program designed specifically for persons new to the human resource field, human resource professionals who need to start building academic credentials or those interested in changing their career to human resources.

The certificate program consists of four required courses of three credits each and two elective three-credit courses related to the management, behavior, and the structure of the organization. Joann Marsili, continuing educa-

tion representative, said that all courses will be conducted in the evening for the convenience of working adults.

Management 100, the introductory course for the certificate, will be offered in the fall semester at Penn State Wilkes-Barre beginning in August. All credits earned in the certificate program can be applied to a two or four year Penn State business degree.

To obtain a brochure outlining the courses or for more information, call Penn State Wilkes-Barre continuing education at 675-9117.

## Grossman to speak at King's summer commencement

Dallas resident Howard Grossman will speak at the 1995 King's College Summer Commencement August 12, at 2 p.m. in the J. Carroll McCormick Campus Ministry Center.

Grossman is executive director of the Economic Development Council of Northeastern Pennsylvania.

Grossman earned his Masters of public administration from New York University and his Bachelor of Arts in Economics from Rutgers University. He also completed graduate work at the School of City Planning at University of Pennsylvania.

Before being appointed executive director of the Economic Development Council of Northeastern Pennsylvania in 1971, Grossman was assistant director of the Montgomery County Planning Commission.

The author of over 200 articles published in magazines nationwide, Grossman has held teaching positions at area colleges. As a member of the Partners of the Americas Program he visited Bahia, Brazil, and organized an 11-county Economic Development Council in the Valley of Jequirical, Brazil, modeled on the public-private sector Economic De-



HOWARD GROSSMAN

velopment Council of Northeastern Pennsylvania.

Grossman is the chair of the Tobyhanna Army Depot Blue Ribbon Task Force and serves on the board of directors of numerous regional and state civic and service organizations, including the Child Development Council of Northeastern Pennsylvania, the Ethics Institute of Northeastern Pennsylvania and the Committee for Economic Growth.

## Imperiale earns law degree

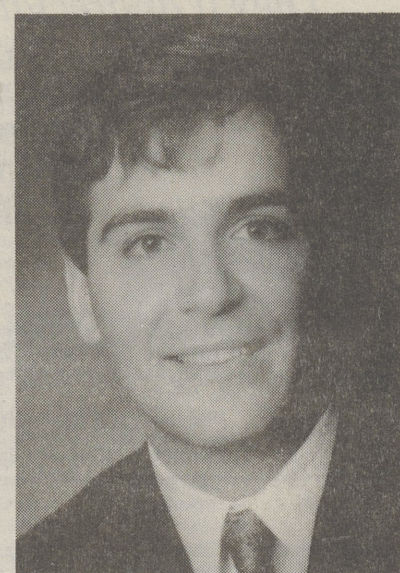
Thomas A. Imperiale, son of Dr. S.M. Imperiale, Dallas, and Marijo Imperiale, Kingston, recently received a Juris Doctorate degree from the Massachusetts School of Law.

Attorney Imperiale is a graduate of Wyoming Seminary Lower School, Wyoming Seminary Preparatory School and Lehigh University, where he earned a B.A. in international relations.

While a student at Lehigh, he spent two summers studying international relations both at the American College of Switzerland and the London School of Economics.

Imperiale served as a legal intern with the London firm of Hallinan, Blackburn-Gittings & Nott. He worked in the office of the late Senator John Heinz, following his graduation from Lehigh, and was an assistant in the law offices of Dalton, Baron, & London, Andover, MA.

Attorney Imperiale sat for the Massachusetts Bar in February



THOMAS A. IMPERIALE, ESQ.

and was recognized by the Supreme Judicial Court of Massachusetts on June 20th. He is associated with the Boston law firm of Lubin and Meyer and resides in Newton, MA.



### Students attend biology workshop

Three area high school students recently attended an Eco-technology workshop hosted by King's College biology department.

Kevin McDonald, Dallas and Lake-Lehman students Jennifer Kordowski and Heather Barsh, took an intensive hands-on course designed to help students understand, experience and appreciate the advances in techniques to assess, restore and remediate the environment, utilizing state-of-the-art equipment. Students also did field studies at the Tannersville Bog and Hickory Run State Park to explore utilizing plants and microorganisms.

### Earn honors at F&M

Two area students received academic honors for the Spring 1995 semester at Franklin & Marshall College.

Named to the Honors List was Janice Shynn, a sophomore biology and psychology joint major, is a 1993 graduate of Wyoming Seminary. She is the daughter of Kyong and Dr. Tae II Shynn.

Named to the Dean's List was Raymond Shynn, a junior English major, is a 1992 graduate of Wyoming Seminary. He is the son of Kyong and Dr. Tae II Shynn, Shavertown.

### Two graduate from Bucknell University

Two Back Mountain students at Bucknell University recently received bachelor's degrees during commencement ceremonies May 27.

Area students are: Mary Pfeiffer, Dallas, daughter of William and Barbara Pfeiffer, BA in English and Jason Prokopchak, RD 3, Dallas, son of Walter Prokopchak and Helen Prokopchak, BA in education and psychology.

### Brown accepts RA position

Andy Brown, Harveys Lake, recently accepted a resident hall assistant's position at Ball State University.

Resident hall assistants counsel students, assist directors in administrative duties and enforce university rules and regulations. They also act as liaisons between hall directors and student residents.

Brown, a junior majoring in urban planning, is the son of Richard and Mary Brown, RR 2.

# KING'S COLLEGE

## Portrait of Excellence

### Fall 1995 Evening & Weekend Schedule

#### UNDERGRADUATE DIVISION

Classes meet one night per week 6:30 - 9 p.m., unless otherwise indicated. Classes begin Monday, August 28.

#### MONDAY

Principles of Accounting I  
Tax Accounting  
Real Estate Fundamentals  
Financial Management  
Japanese Culture  
Human Behavior & Social Institutions  
New Testament  
Money and Banking  
\*Multi-Cultural Education  
Retirement Planning  
Intro. to Gerontology (4:30 - 7 p.m.)  
Personnel Training & Development  
Intro. to Paralegalism  
Pleadings

#### TUESDAY

Principles of Accounting II  
Advanced Accounting  
\*Intro. to Human Resources Management  
Governance, Accountability & Boards  
Theories of Crime  
Broadcast Performance (5 - 8:30 p.m.)  
\*Communications Senior Seminar  
Effective Writing  
Literature and the Arts I  
Christian Marriage  
\*Foundations of Education  
Science Methods (First seven weeks only. Tues. & Thurs., 2 credits, 4 - 5:50 p.m.)  
Teaching of Reading  
\*Classroom Management Problems  
Health Care Administration Policies & Issues  
Probate Administration  
Calculus I  
Principles of Marketing  
Theories of Learning

#### WEDNESDAY

\*Intermediate Accounting I (4 credits)  
\*Managing Non-Profit Organizations  
Current Topics in Business Administration  
Computer Systems & Information Flow I  
Systems Analysis, Design, and Implementation I  
Applied Software Development Project  
\*Mass Communications Law  
Motion Picture Production  
Children's Literature  
\*Art Methods  
(First seven weeks only, 2 credits)  
\*Music Methods  
(Last seven weeks only, 2 credits)  
Shakespeare  
Social Security System  
Managed Care  
Real Estate  
Public Relations  
Drugs and Behavior

#### THURSDAY

Managerial Accounting  
Auditing  
Probation, Parole, & Community-Based Corrections  
Women in American Society  
Fundamentals of Philosophy  
Intro. to Health Care Systems  
Human Resources Information Systems  
Legal Bibliography/Research  
Civil Litigation I  
Professional Selling  
American Constitutional Law III  
Theories of Personality  
Jewish Thought & Life  
\*Indicates classes begin at 6 p.m.

#### GRADUATE DIVISION

King's College offers Master of Science degrees in Accounting, Finance, Health Care Administration, Reading, and Taxation. For more information, call 826-5991.

#### Fall 1995 Graduate Schedule

All classes begin the week of Monday, August 28, and meet once a week.

Developmental Nature of Reading	Mon. 6:15 p.m. - 9 p.m.
Not-for-Profit Accounting Issues	Tues. 6:15 p.m. - 9 p.m.
Portfolio Assessments	Tues. 6:15 p.m. - 9 p.m.
Ambulatory Care Management	Tues. 6:15 p.m. - 9 p.m.
Accounting Systems	Wed. 6:15 p.m. - 9 p.m.
Contemporary Issues in an Aging America	Wed. 6:15 p.m. - 9 p.m.
Estate & Gift Taxation	Thurs. 6:15 p.m. - 9 p.m.
Financial Markets	Thurs. 6:15 p.m. - 9 p.m.

#### First Accelerated Session, August 26 - October 14

Health Policy	Sat. 8 a.m. - 12:45 p.m.
Managerial Economics	Sat. 1 p.m. - 5:45 p.m.
Medical Practice Administration	Sat. 1 p.m. - 5:45 p.m.

#### Second Accelerated Session, October 21 - December 16

Behavioral Medicine	Sat. 8 a.m. - 12:45 p.m.
Taxation & Management Decisions	Sat. 8 a.m. - 12:45 p.m.
Human Resources Management	Sat. 1 p.m. - 5:45 p.m.
Financial Management	Sat. 1 p.m. - 5:45 p.m.

#### IN-PERSON REGISTRATION

(Undergraduate & Graduate Divisions)  
Dates: Now until August 26  
Time: Mon.-Thurs. 9 a.m. to 7 p.m., Fri. 9 a.m. to 4 p.m.  
Place: King's College Center for Lifelong Learning  
1st Floor, Administration Building, Rm. 108  
133 North River St., Wilkes-Barre, PA 18711  
Phone: 826-5865

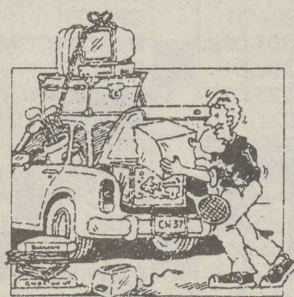


New Weekend Accelerated B.S. Degree  
New Graduate Reading Program

Use the handy coupon on page 2 to subscribe to The Dallas Post

## BACK TO SCHOOL MADE EASY

At Mail Boxes Etc., we'll do the cramming for you - from computers & stereos to boxes of books & furniture. Let us ship all your college-bound belongings with care.



**\$1.00 OFF** UPS AIR  
Limit one coupon per customer per visit. Valid at Dallas location only. Offer expires: 9/30/95.

**\$2.00 OFF** PACKING  
Limit one coupon per customer per visit. Valid at Dallas location only. Offer expires: 9/30/95.



**MAIL BOXES ETC.**  
62 Dallas Shopping Center  
TEL 717 674-2429 FAX 717 674-2431  
HOURS: M-F 8:30-6pm; SAT 9:30-2pm  
A UPS Authorized Shipping Outlet

IT'S NOT WHAT WE DO, IT'S HOW WE DO IT.

#### Weekend Accelerated Degree Offerings FOR PART-TIME EVENING STUDENTS ONLY

##### First Accelerated Session, August 26 - October 15

Principles of Management	Sat. 8 a.m. - 12 noon
Business Ethics	Sat. 8 a.m. - 12 noon
The New Testament	Sat. 8 a.m. - 12 noon
Applied Business & Economic Statistics	Sat. 8 a.m. - 12 noon
Effective Oral Communications	Sat. 12:30 p.m. - 4:30 p.m.
Principles of Economics: Macro	Sat. 12:30 p.m. - 4:30 p.m.
Business Law I	Sun. 12:30 p.m. - 4:30 p.m.

##### Second Accelerated Session, October 21 - December 17

Principles of Marketing	Sat. 8 a.m. - 12 noon
Theatre Experience	Sat. 8 a.m. - 12 noon
The Church	Sat. 8 a.m. - 12 noon
Foreign Culture	Sat. 12:30 p.m. - 4:30 p.m.
Principles of Economics: Micro	Sat. 12:30 p.m. - 4:30 p.m.
Business Law II	Sun. 12:30 p.m. - 4:30 p.m.

Guided Independent Study - American Literature I

KING'S COLLEGE

