



Dallas High School art student Ryan Schuler paints Santa going down a chimney at Mr. Z's in Dallas.

### Art students decorate windows

Dallas High School art students recently combined demonstrating their talents with spreading holiday cheer to residents of three area nursing homes. Students of Claire Morris and Debra Bayer painted holiday scenes on windows at Hampton House, The Meadows Nursing Center and Valley Crest and made Christmas cards for the residents. The students also painted whimsical holiday scenes on the windows of Mr. Z's and the Country Club Shopping Center.



Dallas High School art student Casey Heffron finishes a Christmas scene on the front window of the Gertrude Hawks shop at the Country Club Shopping Center.

Dallas High School art student Mary Jesso touches up a nativity scene on a window at the Hampton House Nursing Home.

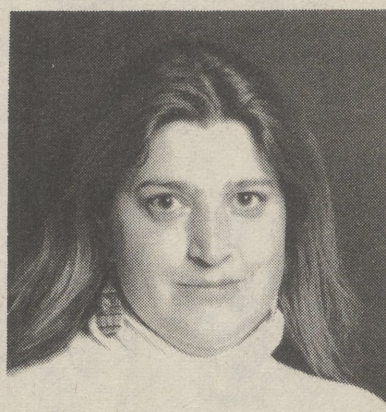
## Karen Laver places first in local photography contest

Karen Laver of Shavertown, a photography student at Luzerne County Community College, recently received recognition for her color and black and white photography in the Bloomsburg Fair Photography Contest.

Laver won first place in the photo montage and artistic impression categories and second place in the human portrait category for all black and white photos.

She also won first place and best of show in the biological category and second place in the inanimate object category for color photos.

Laver also was awarded second place for a graphite pencil drawing.



KAREN LAVER

## School menus

The following school lunch menus are for the week of December 22 - 23. All lunches include milk.

**DALLAS SCHOOLS**  
**THURSDAY** - Deli hoagie or pepperoni pizza, veggies, fruit.  
**FRIDAY** - No school.

**GATE OF HEAVEN SCHOOL**  
**THURSDAY** - Pizza hut, salad, mixed fruit.  
**FRIDAY** - No school.

**LAKE-LEHMAN SCHOOLS**  
**THURSDAY** - Pizza wedge,

seasoned broccoli, potato chips, pineapple tidbits.  
**FRIDAY** - No school.

**WEST SIDE TECH**  
 Breakfast  
**THURSDAY** - Hot ham/cheese, cereal, juice, pastry.  
**FRIDAY** - Coffee raisin cake, juice.

Lunch  
**THURSDAY** - Taco's/trimmings, sharp sauce, Mexicali corn, chocolate cake.  
**FRIDAY** - Grilled cheese, tomato soup, cole slaw, fruit.

### Lake-Lehman's strategic plan on display

The Lake-Lehman School District will display its strategic plan in the library of all five schools for the next 30 days. The board expects to formally approve the strategic plan at the regular January meeting.

**NFL PRIME TIME**

**ESPN**  
 Sunday Night NFL

**NFL on TNT**

Monday Prime Time

The Dallas Post and **Tele-Media** present

Top Local Weekly score wins \$25 CASH from The Dallas Post 1 Month FREE HBO from Tele-Media (Existing Tele-Media customers only)

**POWER POINTS**



WIN \$750

WIN \$750

WEEKLY

Clip along dotted line

WEEKLY

Inside the NFL on HBO

**Game Day**

**GNN Sports**

**NFL on TNT**

**Sportscenter**

WEEK 17  
Games of Dec. 24-26

15
14
13
12
11
10
9
8
7
6
5
4
3
2
1

120 TOTAL POINTS

Name \_\_\_\_\_  
 Address \_\_\_\_\_  
 City, State (zip) \_\_\_\_\_  
 Day Phone ( ) \_\_\_\_\_  
 Night Phone ( ) \_\_\_\_\_

### HOW TO PLAY

Select a winner from each of the week's games, listed below. Select in descending order of your CONFIDENCE in your choices. Win points at left for each correct selection toward possible total of 120 points. See complete rules below. You must be at least 8 (eight) years old to enter. To enter, clip along dotted line, then place game entry in POWER POINTS container at co-sponsor's retail outlet(s). Entrants must list name, address and phone number below.

**LIMIT:** You may enter only one coupon statewide per week.

**DEADLINE:** 2 P.M. FRIDAY

**TIEBREAKER**  Total points scored in STEELERS game.

### THIS WEEK'S GAMES

- |                            |                            |
|----------------------------|----------------------------|
| Arizona at Atlanta         | Kansas City at LA Raiders  |
| Buffalo at Indianapolis    | NY Jets at Houston         |
| Dallas at NY Giants        | Pittsburgh at San Diego    |
| Green Bay at Tampa Bay     | Washington at LA Rams      |
| New England at Chicago     | Detroit at Miami           |
| New Orleans at Denver      | San Francisco at Minnesota |
| Philadelphia at Cincinnati | Aloha Bowl:                |
| Seattle at Cleveland       | Kansas St. vs.             |
|                            | Boston College             |

### POWER POINTS OFFICIAL RULES

- Object of the game is to amass as many of the 120 possible points as you can. Simply review the week's schedule of games, listed on entry form, and decide which game you are surest of picking a winner in. Write the name of your projected winner on the 15-point line. If that team wins its game that week, you win 15 points. Write the name of your second surer winner on the 14-point line, and so on down to the 1-point line, which game you figure to be a toss-up. Next, fill in the tiebreaker, the total points scored by both teams in the week's Eagles or Steelers game. If this step fails to produce a winner, a drawing will be held among those contestants still tied. Decisions of the judge are final. The weekly winner of the contest will receive \$750.
- Any entry form that does not contain a name, address, etc. will be disqualified.
- Entries that fail to select a team in each and every game will be disqualified, as will entries that fail to differentiate between the Rams and Raiders of Los Angeles, the Jets and Giants of New York and Pitt and Pittsburgh.
- No points are awarded on tie games or in case any game is not played for any reason during its scheduled week.
- Entering POWER POINTS constitutes permission by contestant for his or her name and photograph to be used for news and reasonable promotional purposes at no charge.
- Employees of this newspaper and their immediate families are ineligible to participate.
- No purchase necessary. Facsimile game entry forms will be accepted and are available at all outlets of participating co-sponsors. Enter contest by dropping entry forms into POWER POINTS container at participating co-sponsors.
- Weekly deadline for entry will be 2 p.m. Fridays except when noted otherwise on weekly entry form.
- Neither this newspaper nor any co-sponsor will be responsible for illegible entry forms or those lost, stolen or damaged in any way.
- Limit one entry per person per week. Each entry must represent the original work of one entrant; "group" entries, "systems" or other attempts to enter multiple entries will be disqualified.
- Contestants must have reached the age of eight (8) by the Sunday of any week's play.

Deposit Your Entries at

The Dallas Post  
 45 Main Rd.  
 Dallas  
 (Across from

Offset Paperback)

Tele-Media of Luzerne Cty.

Rt. 415  
 Harveys Lake Hwy.  
 Harveys Lake

or mail to:  
 The Dallas Post  
 P.O. Box 366  
 Dallas PA 18612  
 Entries must be received by 2 p.m. Fridays

SPROG



**C.A. Reed** GATEWAY SHOPPING CENTER Behind McCrory's  
**NEW YEAR'S HATS, NOISEMAKERS, BLOWOUTS**  
 Purchase of \$10 or More Of New Year's Supplies Receive Pkg. Of 100 Ct. Bulk Misprinted 9" Plates FREE W/Coupon  
**PHONE 283-1918** Exp. 12/31/94

**POWER POINTS SPECIAL FREE BASIC CABLE INSTALLATION**

In cabled service areas. \$50 value.

Call Tele-Media at 639-1171

Offer good until January 15, 1994

**GNN Sports**