

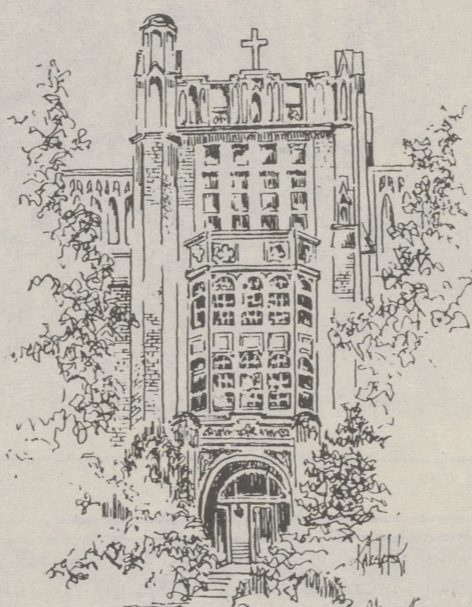
College Misericordia

"An Opportunity to Excel"

THE PAST AND THE PRESENT

Seventy years ago, on September 24, 1924, College Misericordia opened its doors to 37 young women, changing the face of higher education in the Wyoming Valley and beyond. Founded as the first four-year institution, the first Catholic college, and as the first institution of higher learning for women in the county, Misericordia has led the way in providing excellence in higher education.

Founded and sponsored by the Religious Sisters of Mercy as a liberal-



arts college, Misericordia offered its first students opportunities to earn Bachelor of Arts and Bachelor of Science degrees.

In 1924 College Misericordia employed 22 faculty members, 16 of them Sisters of Mercy. Currently the College faculty includes 186 full-time and part-time members. In this 1994-95 academic year, Misericordia has enrolled nearly 1,900 students on a full or part-time basis.

The College has grown considerably in 70 years beginning with:

ADMINISTRATION BUILDING was dedicated August 15, 1924 and housed the Administrative Office, Library, Chapel, Classrooms, Living Quarters for Sisters of Mercy, the Chaplain and the Students. The North and South wings were added to the original building in 1932. Today, it houses Administrative Offices, Library, Chapel, and Classrooms.

McAULEY HALL was dedicated in 1930. Today it houses Walsh Auditorium. It is presently being renovated to provide faculty offices and student advising facilities.

McGANN HALL was dedicated as a dormitory in 1946.

WALSH AUDITORIUM was dedicated in 1952 and is located in McAuley Hall. Walsh Auditorium is presently used for cultural events, lectures, meetings and other large gatherings.

REGINA HALL was dedicated in 1956 and was a musical performance center until 1988. Through a grant from the Marquis George MacDonald Foundation, Regina Hall has since 1989 housed the **MACDONALD ART GALLERY**.

HAFEY-McCORMICK SCIENCE BUILDING was first dedicated in 1957 and re-dedicated in 1988. Today, it serves as a center and a classroom for the sciences.

ALUMNAE HALL was dedicated in 1962 as a residence hall. It is a residence hall today. In 1972 Hurricane Agnes caused the Susquehanna River to overflow its banks, closing Nesbitt Memorial Hospital on the West Side. College Misericordia and Mercy Center offered food and shelter to nearly 1,000 flood victims, and Alumnae Hall instantly became a temporary hospital. Between June 22 and August 15 fifty-four babies were born in this building.

MERRICK HALL was dedicated in 1962. Today it is a center for student activities and houses the cafeteria, coffee shop, bookstore, and post office.

McHALE HALL was dedicated as North Hall in 1972 and was re-named McHale Hall in 1977. Today it is a residence hall with meeting rooms located on the ground floor.

THE ANDERSON SPORTS-HEALTH CENTER was dedicated in 1993. It provides state-of-the-art playing areas, exercise rooms, coaching, a student health center and a regulation size NCAA swimming pool for students. Special sports opportunities have been opened to the local civic community through the Anderson Center.

GILDEA HALL was dedicated in 1994 as a residence hall.

THE FUTURE

College Misericordia is looking ahead to its 75th Anniversary on September 24, 1999. Preparation for that occasion is already in progress and the College is taking this opportunity to announce what it will have accomplished by its Diamond Anniversary.

1. Work has already begun on a comprehensive history of College Misericordia.

2. Today's planners - faculty, staff, and students - look to strengthen endowments and to ensure the financial viability of College Misericordia. This work will be facilitated by the newly formed Heart of Mercy Society.

3. College Misericordia will construct the Mary Kintz Bevevino Library. The building will be named to honor the late alumna who graduated in the class of 1987. Mary also served the College as a member of the Board of Trustees after graduation when the concept of a new

library was discussed. She served on the original Committee that established Theatre-On-The-Green in 1988. Theatre-On-The-Green has since become an annual affair.

The devotion of the Sisters of Mercy to the College and its mission, the College's emphasis on a vigorous liberal arts education, and the College's devotion to its students and their preparation for the challenges of the future remain unchanged.



Misericordia
College Misericordia
301 Lake Street
Dallas, PA 18612-1098
(717) 674-6400