

Drivers

(continued from page 1)

allowed to compete. Four-wheel-drives, especially those with smaller frames, tend to roll over because their bodies are set higher off the frame, Estelle said.

• All drivers must wear helmets and shoulder/lap seatbelts. The SCCA will have spare helmets on hand for drivers needing them.

• All cars must pass a safety inspection of tires and brakes and have all loose items inside the car and the trunk removed. Batteries and cables under the hood must be fastened down.

In addition to trophies for the fastest cars in individual classes, three special trophies will be awarded to the fastest car in the

entire event, the fastest modified car and the fastest stock (unmodified) car.

Entry fees are \$12 for SCCA Northeastern Pennsylvania Region members and \$15 for all others.

The SCCA Northeastern Pennsylvania Regions also sponsors the hill climbs at Montage and Giant's Despair and races at Pocono, Lime Rock and Watkins' Glen raceways.

"We're looking forward to being in Dallas again this year," Estelle said. "The school officials have always worked well with us and the people have always been very hospitable."



POST PHOTO/GRACE R. DOVE

Pollution solutions

Displaying their original inventions and ideas to combat pollution are members of Gate of Heaven school's enrichment classes are, from left, Kaitlyn Moody with ways to combat acid rain, Katie Bartizek with a device to pick up discarded papers, Jack Lehigh with a completely recyclable soda six-pack, Anna Bruns with a metal can separator and R. J. Barna with a special comb to remove spilled oil from animals' fur.

Borough park

(continued from page 1)

composed of solicitor Ted Krohn, and council members Pat Peiffer, Marie Eyet and Martha Weber.

The council also voted quickly, unanimously and in high good humor to accept state reimbursement of over \$12,000 for 75 percent of the past winter's cost for salt and antiskid material.

John Devlin, owner of the building housing Dallas Photo Shop, complained that signs for an adjoining business block the full view of his tenant's store. Milton Lutsey, borough manager, said that some signs had been moved and those remaining complied with setback requirements. How-

ever, he and the solicitor believe the property owner will move one sign further to improve matters.

A new home permit was issued in the previous month to James Wisniewski for lot #2 at Stonehedge, with a value of \$160,000. Permits were granted to Karen Yamrus, 36 Village Green Drive to add a deck to an above ground pool, value \$2,000; Robert Morgan, 239 Huntsville Road, for a carport, value \$2,000; and Michael Kashnicki, 51 Hickory Road, for an inground pool, value \$15,000.

The next meeting will be Tuesday, September 20 at 8 p.m.

Back Mountain briefs

Jane Swire exhibits photographs

An exhibit of photographs by Jane Newberry Swire at Mel's Diner, Rte. 29, Noxen is now in progress.

The display contains an assortment of photos of spring and summer flowers, matted and ready to hang.

Jane Swire has been taking close-up pictures of flowers for over 10 years. She has held slide shows and is a member of the MacDonald Art Gallery at College Misericordia.

The photographs can be viewed from 6 a.m. to 9 p.m. daily. For more information, call Mel's at 298-2738.

Roast beef dinner at Sweet Valley Aug. 27

A family-style roast beef supper will be held at the Sweet Valley fire hall, Main Road, Saturday, Aug. 27 from 5 to 7 p.m. Takeouts available at 4:30 p.m.

Luzerne County Fair slates Family Day

September 11 will be Family Day at the Luzerne County Fair. Activities include tug of war, balloon race, teaspoon and eggs race, teaspoon and popcorn race, apple dunking, three legged race, egg toss, water balloon toss, ball in basket, racing with ball using legs only, water race, ring toss and little ball catch.

The contest is open to children of all ages. Children should be in the contest area near the 4-H building approximately 50 minutes before the start of the contests.

The Luzerne County Fair will be held September 7 through the 11th on Route 118 in Lehman-Dallas Twp.

For more information, call 675-FAIR.

Horseshoe pitching Sept. 10-11 at fair

September 10 and 11 have been selected as the day for The Horseshoe Pitching Contest at The Luzerne County Fair.

The contest will be held all day and there will be a charge of \$3.00 for anyone wishing to enter the contest.

Trophies will be awarded to the winners. The winners' names will be placed in the papers following the Fair.

There is no age restriction. All are welcome to enter.

Dog owners must tie pets

The Kingston Township Zoning Officer reminds all dog owners that they should prevent their dogs from running at large and causing damage to private or public property.

Owners of dogs who are in violation of the Township Ordinance are subject to a fine.

Dr. Kon joins Geisinger staff

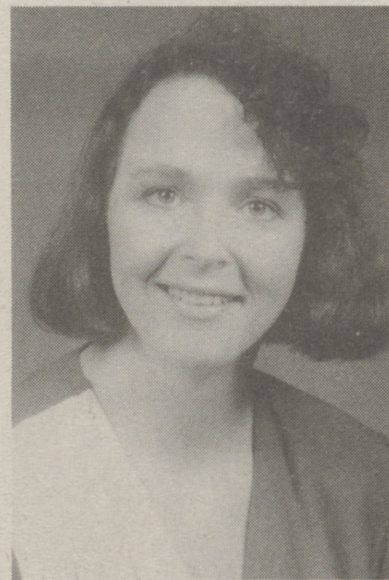
Lisa A. Kon, D.O., has joined Geisinger as an associate in family practice at Geisinger Medical Group-Central Wilkes-Barre.

Kon earned her doctor of osteopathic medicine degree from the University of Health Sciences College of Osteopathic Medicine in Kansas City, Missouri. She graduated summa cum laude from Wilkes University with a bachelor of science degree in biology, and is a graduate of Dallas High School.

She completed a residency program in internal medicine at Geisinger Medical Center, Danville, and a rotating internship at the Community Hospital of Lancaster. She is a member of the American Osteopathic Association and the American College of Physicians and is Board eligible in internal medicine.

Kon is the daughter of Walter J. Mikulis of Nanticoke and is married to Raphael B. Kon, D.O., an associate in internal medicine with the Geisinger Medical Group-Wilkes-Barre.

She is accepting new patients



LISA A. KON, D.O.

at the Geisinger family practice facility at 175 S. Wilkes-Barre Boulevard beginning October 1, 1994. For more information, call 829-2621.

Tell our advertisers you saw them in The Post. They'll appreciate it, and so will we.

Brush Hogging
675-1437

(SHHH!)

(We can't keep the best seafood specials a secret for long!)

MON. TO WED.
6 Petite Lobster Tails
\$10.95

THURSDAY \$16.99
Giant 3/4 Pound
Lobster Tail Dinner

PUB SPECIALS
5 TILL 7 (7 DAYS)
CLAMS.....\$3.50 doz.
WINGS.....15¢ ea.
SHRIMP.....15¢ ea.
BEER SPECIALS!



WATERFRONT
Restaurant & Pub
304 Kennedy Blvd.
Pittston, PA 654-6883

MICHELOB WILK TALK RADIO
MUSCULAR DYSTROPHY ASSN.

Captain & Mate Golf Tournament
At Four Seasons Golf Club, Exeter • 655-8869

SUNDAY, AUGUST 28th
Tee Times Starting At 9 A.M.

*\$35⁰⁰ per person includes 18 holes, motor cart, meal, beverages, prizes and give-aways for everyone. Limited to 1st 50 paid teams, first hole in one on #10 wins trip for 2 to Florida. Come and play while helping "Jerry's Kids."



GRAND OPENING
Monument Antique Center
Saturday 10 to 7 - August 27
Antiques - Primitives - Collectibles
Magnificent historical 150 year old building
Treasures lining the walls of our walk in vault
• We also welcome fine consignments
• Appraisal Service offered
828 Wyoming Avenue
Wyoming, PA 18644
Hours 10 to 5 - Monday by chance
Phone 693-9309

Steven's Town & Country Cleaners
Country Club Shopping Ctr. • 675-0468

Take Pride
in Your Clothes.
We Do!

We're fabricare specialists and we take great pride in making you look good. We do everything we can to please you and keep you coming back. This means giving you more in quality drycleaning and personalized service...and making you look good!



Steven's Town & Country Cleaners

Check Out Our New Store Hours
Mon. - Fri. 7 A.M. - 7 P.M. • Sat. 8 A.M. - 6 P.M.
The Professional Edge • The Personal Touch

A member of the International Fabricare Institute, the association of professional drycleaners and laundries.

The Dallas Post

Published Wednesdays
675-5211

FAX: 675-3650

Mailing Address: P.O. Box 366, Dallas PA 18612
Shipping Address: 45 Main Road, Dallas PA 18612
Office hours: Monday - Friday: 8:30 a.m. - 5 p.m.

NEWS

Coverage area: The Dallas Post covers the "Back Mountain" area of Luzerne County, including Dallas, Kingston, Lehman and Jackson townships, Dallas Borough, Harveys Lake and the Dallas and Lake-Lehman school districts. We try to get to as many events as possible, but staff and space limitations make it impossible to cover everything. If you have news about your family, town or organization, please send it to us and we'll try to get it in. Photographs are welcome; we prefer black and white, but color will usually work.

Corrections, clarifications: The Dallas Post will correct errors of fact or clarify any misunderstanding created by a story. Call 675-5211.

Have a story idea? Please call, we'd like to hear about it.

Letters: The Dallas Post prints all letters which have local interest. Send letters to: Editor, The Dallas Post, P.O. Box 366, Dallas PA 18612. All letters must be signed and include a phone number at which we can reach the author. Deadline is Noon, Monday prior to publication.

Want a photo that has appeared? We can provide prints of photos taken by our staff. Prices: 5x7 - \$5; 8x10 - \$10. Call or stop by to order.

ADVERTISING - 675-5211

Classified Advertising Deadline: Mondays at 4 p.m.

Display Advertising Deadline: Mondays at 4 p.m.

(Friday at 4 p.m. if proof required)

We have a variety of rates and programs to suit your advertising needs.

The Dallas Post satisfies most co-op ad programs.

Creative services at no charge.

Combination rates with The Abington Journal, Clarks Summit, available.

We can produce your newsletter, flyer or newspaper. Call for quotes on typesetting, production and printing.

CIRCULATION - 675-5211

Orders for subscriptions received by Friday will begin the following week. See box at right for subscription prices. Local subscriptions should arrive Wednesdays. Please inform us of damage or delay.

The Dallas Post (USPS 147-720)

Published weekly by Bartsen Media, Inc. \$18 per year in Luzerne and Wyoming counties (PA); \$20 elsewhere in PA, NY or NJ; \$22 all other states. Second-class postage paid at Dallas PA.

POSTMASTER: Send address changes to The Dallas Post, P.O. Box 366, Dallas PA 18612.

© COPYRIGHT: Entire contents copyrighted. All rights reserved. No part of this publication may be reproduced by any means without the express written consent of the publisher.

HOW TO SUBSCRIBE

Complete and mail in this form, or call 675-5211
 Please enter a subscription to The Dallas Post

Name _____

Mail Address _____

City _____ State _____ Zip _____

Phone _____

RATES:

	1 Year	2 Years
Luzerne & Wyoming counties	\$18	\$32
Other PA, NY or NJ	20	36
All Other States	22	40

Return completed form with payment to:
The Dallas Post
P.O. Box 366
Dallas, PA 18612