

Calendar

Calendar items are published free of charge. Generally, items will be published the two weeks prior to the event. To submit material, send it to The Dallas Post, P.O. Box 366, Dallas PA 18612, or bring it to our office at 45 Main Road in Dallas. Deadline is Friday at 3 p.m.

Community

AUG. 19, EDDIE TURCHIN SQUARE DANCE BENEFIT, 8:30 p.m.-midnight. College Misericordia's Merrick Hall. Callers are REd Jones and Joe McKeown. Tickets, \$10. Proceeds will be used for a special van equipped with a wheelchair lift. For tickets and information call Red Jones at 639-2186 or Bonnie Turchin at 675-6430.

AUG. 19-21, FAMILY FESTIVAL, Our Lady of Mount Carmel Church, Lake Silkworth at the church grounds Rte. 29 in Lake Silkworth. Friday, will be Country & Western night with E-Z Ride, Saturday, the Polka Naturals, Sunday, Polka Punch and the Ray Suda Orchestra. Ethnic food, refreshments, games for all ages will be featured. An outdoor Polka Mass will be held on Saturday at 5 p.m.

AUG. 19-22, KIPPSTON TOMATO FESTIVAL, Kennedy Blvd., Pittston.

AUG. 20, CHICKEN-BAR-B-QUE, Maple Grove United Methodist Church Pavilion, 4 p.m.-7 p.m., serving chicken, baked potato, corn on the cob, cole slaw, rolls, cake and beverage. Church is located on the Sweet Valley Road in Pikes Creek about 1/3 miles from Sheldon's Lunch.

AUG. 20, COUNTRY WESTERN DANCES, old Dallas Twp. school building. 7-11 p.m. Free lesson included 7-8 p.m. with instructor Bonnie Kochanowski. Admission \$5 per person; \$8 per couple. Refreshments available. Proceeds from the dance benefits the members of Senior Girl Scout Troop #622, going to Europe in June 1995. For information, call Jamie at 696-3595.

AUG. 20, CHICKEN BARBEQUE, and open house, Kunkle Fire Co. 2-7 p.m. at the fire hall. All fire apparatus on display, free blood pressure screening and sugar testing, fire prevention info., tot finder stickers.

AUG. 20, BIKE TO JIM THORPE WITH THE SIERRA CLUB, 25 miles of downhill riding. Meet at Office Max, Wyoming Valley Mall, Wilkes-Barre, 9:45 a.m. 586-1930.

Special Events

AUG. 20, 3RD ANNUAL CAR SHOW AND EVENT, Wyoming Valley Mustang and Ford Club, Kingston Armory, Market St., Kingston. Featured at the event classic will be Fords, Mustangs, trucks, automobiles, various styles of motorcycles and special appearances by Magician Pat Ward, Face Painter, Mary Jo Bozinko, and W-B/Scranton Red Barons Mascot "The Grump". Admission \$1 and all proceeds go to the Make-A-Wish Foundation of Northeastern Pa. Further information can be obtained by calling 829-3235 or 1-800-834-3235.

AUG. 28, ARTS AT HAYFIELD, sponsors its 10th annual Summer Festival at Penn State Wilkes-Barre Campus, Lehman, 10:30 a.m.-5 p.m. Over 90 artisans and crafters will exhibit and sell their work throughout the day, there will be live entertainment featuring Just Us and The Anzalone Brothers and Company. Donation \$1.00. For more information, call Arts at Hayfield, 675-2171.

AUG. 29, FLAG TWIRL/POMPOM WORKSHOP, with Mary Regula, 7-time world dance-twirl champion, certified by World Twirling Ass'n. and Drum Majorettes of America. Major Performing Arts, Trucksville, 1 p.m. \$3 each, reservations only by August 25. 696-4755

AUG. 27-28, ANTIQUE MARKET at The Barn in Lehman, 9 a.m.-5 p.m. About 40 dealers will be displaying their wares; antique furniture, glassware, toys, primitives, jewelry, tools, vintage clothing, linens, cookware, decorating items and hand woven rugs. Parking and admission are free. The Barn is on Market Street, Lehman. For more information, call Gary Baker at 675-42332. New dealers welcome.

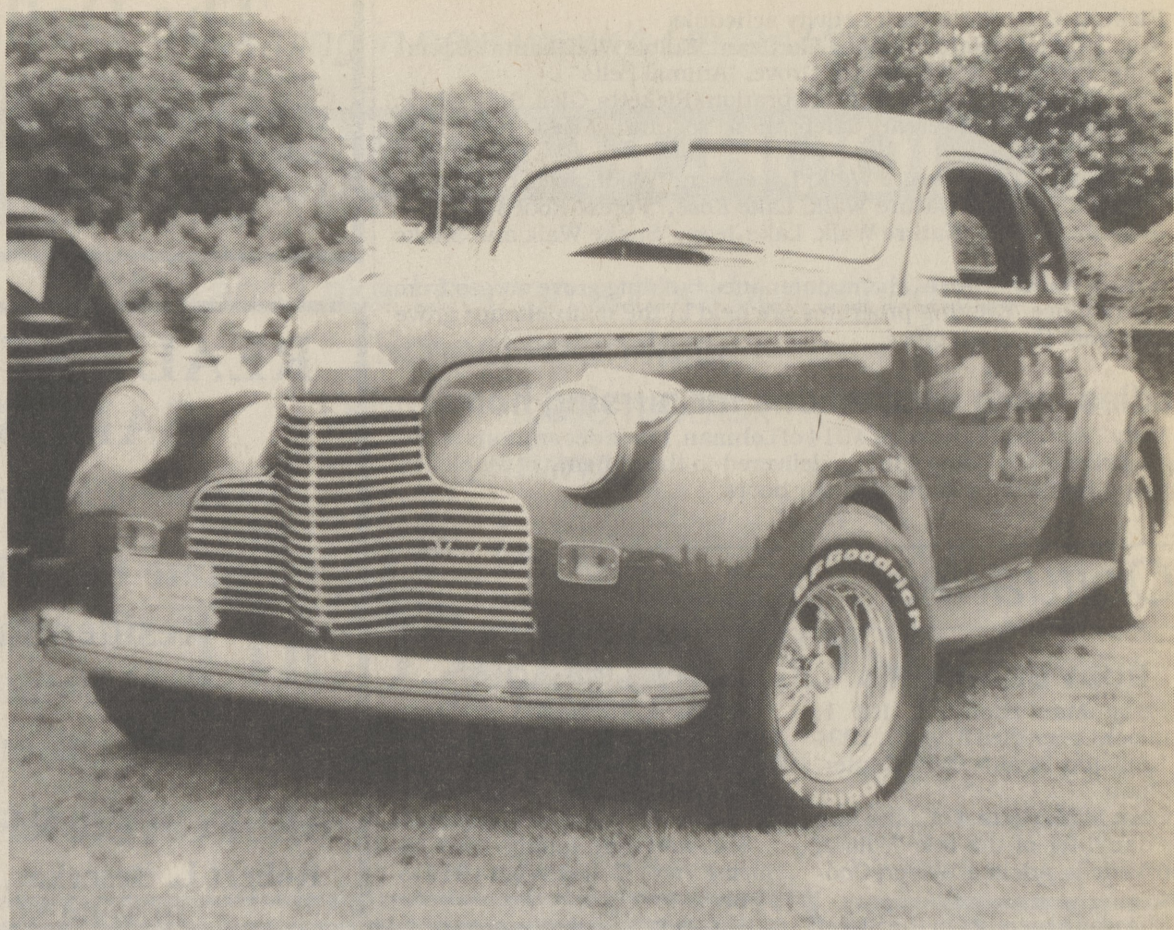
SEPT. 3, FLEA MARKET, sponsored by Kunkle United Methodist Women, 9 a.m.-4 p.m. Kunkle Fire Hall parking lot. Rain date Sept. 4, 1-5 p.m. Perennials, houseplants, homemade baked goods and flea market items available. Vendor space \$5. For reservations or information call 675-5801

Lehman car show Aug. 21

The 11th annual Back Mountain Antique Car Show and Flea Market will be held at the Lehman-Jackson Elementary School grounds on August 21. (Rain date is August 28). Hundreds of cars from the early 1900's to 1986 will be on display including trucks, classics, hot rods, custom cars and motorcycles; 51 classes in all.

There will also be a car corral for cars to be sold. The flea market will have different articles including car parts and crafts. The flea market opens at 8 a.m. while all cars to be judged must be on the field by 12 noon.

The car show is one of several projects sponsored by the Lake-Lehman Band Sponsors to fund the band's activities throughout the year. Refreshments will be served throughout the day. Admission to the car show is \$1.00 per person. For more information call Joe Cortegerone, Car Show Chairman at 696-1481.



HOT WHEELS! - Cars from the early 1900's to the mid-1980's will be featured at the 11th Annual Back Mountain Antique Car Show and Flea Market at the Lehman-Jackson School August 21.

Meetings

AUG. 23, LAKE SILK WORTH AREA LIONS meet 7 p.m. at the Red Rooster Restaurant, Pikes Creek for a business/board dinner meeting. Kelvin Swanger will preside.

AUG. 24, LUZERNE COUNTY FAIR BOARD meets at Luzerne County Fairgrounds, 7:30 p.m.

SUPPORT GROUP MEETINGS for ACOA (Adult Children of Alcoholics) and other dysfunctional families are held, every Sunday, 8 p.m. Blue doors of Mercy Center at College Misericordia, Dallas. For more information call the Help Line at 829-1341

'50 SINGLES CLUB, meets every Tuesday at 7:30 p.m. at the Holiday Pancake House, Union St., Luzerne. For information, 675-1910 or 283-5614 after 6 p.m. weekdays or all day on weekends.

TUESDAYS, BACK MT. TOUGHLOVE, Shavertown U.M. Church, 163 N. Pioneer Ave., Shavertown. Toughlove is a self-help program for parents troubled by teenage behavior. For more info, 675-3616 or 675-0372.

KidStuff

THROUGH SEPT. 5, STEAMTOWN EXCURSIONS, take a train ride along Lackawanna and Western Railroad's main line between Scranton & Moscow. For details, 961-2035.

AUG. 20, 27, 'THE TORTOISE AND THE HARE', modern adaptation of classic tale. Scranton Public Theatre, noon. \$5.

Outdoors

RICKETTS GLEN NOTE:
AUG. 17, 'EDIBLE WILD PLANTS', nature walk, 10 a.m. 477-5675.
AUG. 18, "ANIMAL TRACKING", nature walk, 10 a.m. 477-5675.

AUG. 21, BIRD WALK, Past president of the Greater Wyoming Valley Audubon Society, Mark Blauer will guide nature enthusiasts through the Riverfront Parks, noting the best times and places to look for birds as well as field markings that identify various species.

At the Kirby

AUG. 18 & 20, "WOLFE", drama. 7:30 p.m. Adults, \$2; children, \$1. Rated G. Presented by the Kirby Center.

AUG. 25 & 27, 'LITTLE BIG LEAGUE', kids and baseball. 1 and 3:30 p.m. Adults, \$2; Children, \$1. Rated PG. Presented by the Kirby Center.

Music

N.E. PA DOO-WOOP SOCIETY seeks members. Meeting, social hour, first Tuesday of each month, 7 p.m., Lisi's Lounge, Plains. Call 842-0730 days, 696-4325 nights.

Exhibits

THROUGH AUG. 21, 'HARD CHOICES III' AND CRAFTS FELLOWSHIP RECIPIENTS EXHIBITS, Sordani Art Gallery, Wilkes University, Wilkes-Barre. Summer hours: Daily, noon-5 p.m. For details, call 831-4325.

THROUGH AUG. "SUNFLOWERS," exhibit featuring the works of five members of the Chollak family. Mellon Bank, Main St., Dallas, during regular banking hours.

AUG. 21-OCT. 9, REGIONAL JURIED ART SHOW, Everhart Museum, Scranton. Tues.-Fri. 10 a.m.-5 p.m.; Sat., Sun. noon-5 p.m. Call 346-8370.

CROSSWORD CORNER

1	2	3	4	5	6	7	8	9	10	11	12	13	14	15	16	17
18	19	20	21	22	23	24	25	26	27	28	29	30	31	32	33	34
35	36	37	38	39	40	41	42	43	44	45	46	47	48	49	50	51
52	53	54	55	56	57	58	59	60	61	62	63	64	65	66	67	68
69	70	71	72	73	74	75	76	77	78	79	80	81	82	83	84	85
86	87	88	89	90	91	92	93	94	95	96	97	98	99	100	101	102
103	104	105	106	107	108	109	110	111	112	113	114	115	116	117	118	119
120	121	122	123	124	125	126	127	128	129	130	131	132	133	134	135	136

1	2	3	4	5	6	7	8	9	10	11	12	13	14	15	16	17	18	19	20	21	22	23	24	25	26	27	28	29	30	31	32	33	34	35	36	37	38	39	40	41	42	43	44	45	46	47	48	49	50	51	52	53	54	55	56	57	58	59
---	---	---	---	---	---	---	---	---	----	----	----	----	----	----	----	----	----	----	----	----	----	----	----	----	----	----	----	----	----	----	----	----	----	----	----	----	----	----	----	----	----	----	----	----	----	----	----	----	----	----	----	----	----	----	----	----	----	----

ACROSS
1 "After the — (play)
5 Ninny
8 Southwest wind
12 Lotion ingredient
13 Bum — (unfair blame)
14 Challenge
15 Poker, for one
17 Galatea's beloved
18 Slight trace
19 Summary
21 Jane Austen novel
24 Part of a min.
25 Dairy animals
28 Italian wine center
30 Ship's stern
33 Swiss canton
34 Monetary penalties
35 Early car
36 Chum
37 Dill weed
38 Carpenter's tool
39 Morning moisture
41 Paper quantity
43 Found in pralines
46 Game of chance
50 Jewish month
51 Asset held in reserve
52 "My — and Only"
53 Tennis stroke
54 Sea swallow
55 Yoko —
56 Revelers' cry
57 — of the earth
58 Network
59 Stitches
DOWN
1 Datum
2 Jai —
3 Bereft, once
4 Rocky shelves
5 Constellation
6 Fictional Spade
7 Hastened
8 Maxim
9 King, queen or jack
10 Ares' sister
11 Take five
16 Ring sparkler
20 Egyptian goddess
22 Syllable with line
23 He was "Lou Grant"
25 Loving —
26 Money of account
27 Deuce or joker
29 Head, in France
31 Turkish cap
32 Nail or dance
34 Flatter servilely
38 Church vestments
40 Merits
42 — Vigoda
43 — de fote gras
44 Paradise
45 Put on display
47 Wheel hub
48 Flourish
49 Pindaric works

Answers to Crossword, Challenger on page 12

Today's Challenge
Time 13 Minutes
7 Seconds
Your Working Time
Minutes
Seconds

15	16	17	18	19	20
21	22	23	24	25	26
27	28	29	30	31	32

Wilkes-Barre/Scranton International Airport

FLY NOW... PAY LESS

when you fly from AVP

Call: **USAir** **DELTA** **USAir** **UNITED EXPRESS** or your travel agent.

MORE FOR '94!

CUSTOM BUILT ON YOUR LOT!

Come and See the ALL New & Remodeled **CHELSEA I & CAMBRIDGE IV**

Standard Features Now Include:
Anderson Skylight • GE Dishwasher • Built-in GE Vented Microwave • GE Self Cleaning Free Standing Electric Range • Upgraded Tiles for Hall & Master Baths (including Tile Ceilings in Tub Areas) • Vanities for 1/2 Baths • Wood Edging for Kitchen Counter Tops • Base Lazy Susan for Kitchens • Tri-View Mirror for Master Baths • and Much More!

Lock In Current Prices & Mortgage Rates Now for Sp '94 Construction

The Chelsea I - \$82,900

Model On Display
70' X 32' • All Brick • 2 Car Garage • Covered Rear Porch • 1505 Sq. Ft. Living Area

The Cambridge IV - \$74,400

Model On Display
56' X 28' Bi-Level • Oversized 2 Car Garage • 2000 Sq. Ft. Living Area

Call for a FREE Brochure & Price Sheet - 825-4077

HANOVER HOMES
BETTER HOMES FOR BETTER LIVING

MODEL HOMES ON DISPLAY
MODEL HOME HOURS:
Mon. - Thurs.; 12 - 8 p.m.;
Sat. & Sun.; 12 - 5 pm;
Closed Friday

DIRECTIONS TO THE MODEL HOME CENTER: Rt. 315 Wilkes-Barre, PA, Approx. 2 Mi. North of the Wyoming Valley Mall, just past entrance to Pocono Downs Racetrack