

Missing Dallas Twp. man found dead

By GRACE R. DOVE
Post Staff

Dallas Township resident Jim Kelly, an apparent suicide victim, was found by police July 13 in Vernon in Eaton Township, Wyoming County, after a search using helicopters, a search dog and patrol cars.

According to Sgt. Paul Mendofik of the Pennsylvania State Police Tunkhannock Barracks, Kelly had been reported missing from his Demunds Corners home July 7.

Dallas Township police had been looking for him for several days until he apparently crossed the Wyoming County line.

The State Police at Tunkhannock had called in Mike Norris

and his search dog from World's End State Park in Forksville to assist with the search, Mendofik said.

Searchers found Kelly's body shortly after 10 a.m. on Township Route 410 in Vernon, Mendofik said.

Kelly, a Dallas Township road department worker, had been a police officer for 26 years and had worked for Parker Fuel as an oil burner repairman and for Techwel, according to police chief Carl Miers.

"Jim was a patrolman when I started with the force," Miers said, describing Kelly as an all-around good policeman.

"In all of the time that we worked together, there was never an exchange of bitter words between us

over anything. As a chief, I never found fault with any of his work. He was fair, dependable and did his work well. Jim never missed work unless he was legitimately sick and would come in on an hour's notice if I asked him to."

Miers said that Kelly had enjoyed fishing the river and farm ponds with his sons, Jimmy and Pat. Once or twice they had gone fishing in Canada, Miers said.

"Jim was very easygoing, a pleasure to work with," said township supervisor and retired road department worker Phil Walter, who had known Kelly for many years.

"He brought a lot skills to the job - Jim could drive the trucks, operate heavy equipment and do plumbing and other work. He always tried to help people out."

Ride

(continued from page 1)

spokesperson Elizabeth Hibbard Ortega.

Proceeds from the Hospice Hundred will fund the organization's in-patient care unit, which provides a homelike place for terminally ill patients who want to stay at home to die but are unable to.

"This type of care is very necessary, not only here in the valley, but in the entire world," Anzalone said. "The Hospice St. John people were positively fabulous. I would recommend them for anyone."

Vacant position in Franklin Township

The Franklin Township board of supervisors is accepting nominations to fill a vacancy on the Franklin Township planning commission.

Any interested township resident may submit their name for the supervisors' consideration.

Call the Municipal Building at 333-4111 and leave a message.

Hospice Hundred offers riders a chance to help

By GRACE R. DOVE
Post Staff

Hospice St. John has organized the July 24 Hospice Hundred Ride for Dignity, a noncompetitive pledge bicycle tour, to raise funds for an in-patient care center for terminally ill patients.

The tour has two legs - 50 kilometers (31 miles) or 100 kilometers (62 miles), with aid stations and mechanical, medical and communications support provided along the routes.

Roads along the ride's route won't be closed to traffic during the race.

The 50 km/31 mile leg starts at Dallas High School and runs through Franklin and Northmoreland townships and small sections of Dallas and Kingston townships.

The 100 km/62-mile leg includes all of the first leg, returning to the high school, then riding through Harveys Lake Borough, Lake, Lehman and Jackson townships, then back to the high

school. Roads will be open to vehicle traffic during the race.

Beginning at 8 a.m. at the high school, the ride is expected to finish at 5 p.m.

Because the ride is non-competitive, riders will not be timed on the courses, allowing them to ride at their own pace.

The teams of ten or more riders will bring pledges for donations to the race.

Ride activities will begin July 23 with a pre-ride "carbo-load" dinner at Wilkes University. On the day of the ride, participants will also be offered breakfast, snacks along the route and a post ride buffet lunch.

Proceeds will be used to fund Hospice St. John's inpatient care program for terminally ill patients who want to stay at home to die but aren't able to. The inpatient center gives them a homelike place where they can go to live for the rest of their lives as comfortably as possible.

Evans family reunion Aug. 7

The James K. Evans family reunion will be held Aug. 7 at the home of Ethel Faux Kidd.

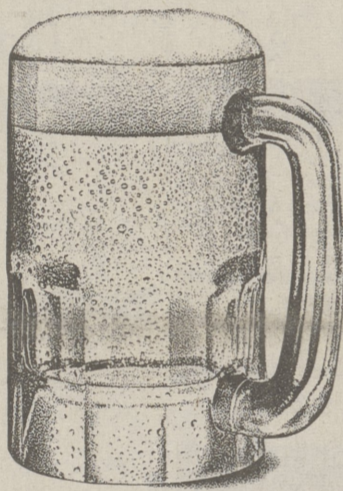
Bring a dish for lunch at 12:30 and a bathing suit.

From Wilkes-Barre, take 309 N. to 29 N. the home is located 5 miles outside Beaumont on Rt. 29. Look for the balloons and reunion sign. For information, call 717-836-3957.

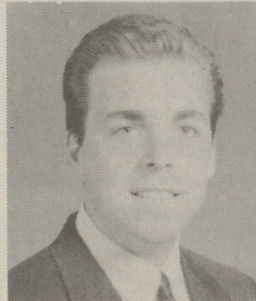
Red Cross blood drive August 2

An American Red Cross Blood Drive is scheduled for Tuesday, Aug. 2 at the Fellowship Evangelical Free Church, Hildebrandt Road, Dallas, from 1 to 6 p.m.

Good beer keeps its head.
You should too.



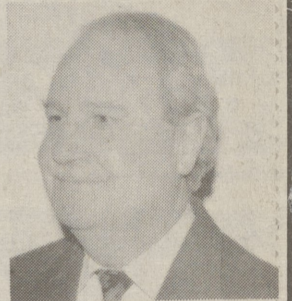
Know your limit. Think when you drink. Miller



Eric J. McCabe
823-9714

Mortgages Made EASY

We understand that the confusion caused by mortgage options can be frightening. That's why MNMC offers a stress-free solution. 'Mortgages Made Easy' At no obligation, we'll privately and confidentially listen to your individual situation. Finally, you can stop worrying and find the perfect home!



Gary Landin
674-5711



MARYLAND NATIONAL MORTGAGE CORPORATION

PHFA • FHA • VA • PURCHASING • REFINANCING

VACATION SPECIALS.



ON OUR FINEST KELLY RADIALS KELLY TIRES



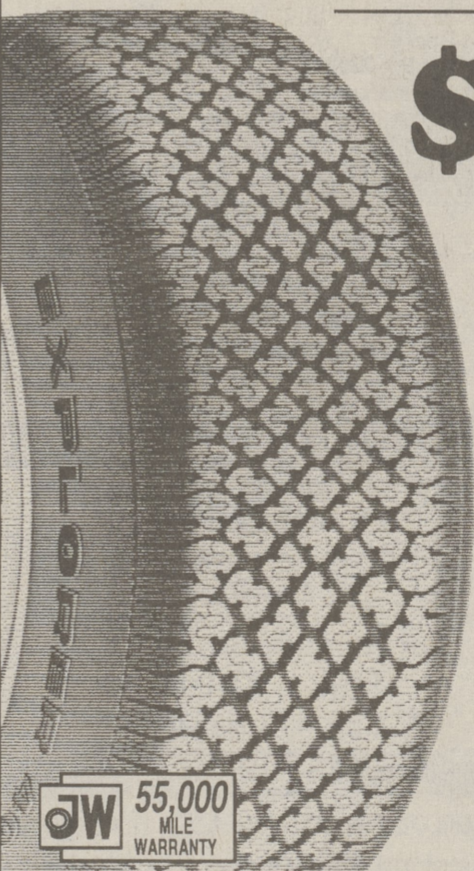
NATIONWIDE TIRE AND SERVICE WARRANTIES!

Warranties Honored At Over 8000 Locations Nationwide

90 Days Same As Cash Low Monthly Payments Up To \$2000 Credit Limit Approval In Minutes See Stores For Details

KELLY TIRES

EXPLORER 400



\$29.95 P155/80R13

- ALL SEASON STEEL BELTED RADIAL
- A LIFETIME OF ALL SEASON PERFORMANCE
- M&S RATED
- WHITEWALL

| | |
|-----------|---------|
| 165/80R13 | \$38.95 |
| 175/80R13 | \$41.95 |
| 185/80R13 | \$43.95 |
| 185/75R14 | \$46.95 |
| 195/75R14 | \$47.95 |
| 205/75R14 | \$49.95 |
| 205/75R15 | \$50.95 |
| 215/75R15 | \$51.95 |
| 225/75R15 | \$53.95 |
| 235/75R15 | \$55.95 |

KELLY TIRES

METRIC 600T

\$28.95 IDEAL FOR FRONT WHEEL DRIVE CARS • ALL SEASON • 1 SPEED RATED 155R12 76S

| | |
|-----------|---------|
| 175/70R13 | \$46.95 |
| 185/70R13 | \$49.95 |
| 185/70R14 | \$52.95 |
| 195/70R14 | \$54.95 |
| 205/70R14 | \$56.95 |

KELLY TIRES

NAVIGATOR 800

\$35.95 • SPECIALLY DESIGNED TREAD ELEMENTS DELIVER EXCEPTIONAL WET TRACTION P155/80R13

| | |
|---------------|---------|
| WHITEWALL | |
| 165/80R13 | \$46.95 |
| 175/80R13 | \$48.95 |
| 185/80R13 | \$52.95 |
| 185/75R14 | \$57.95 |
| 195/75R14 | \$59.95 |
| 205/75R14 | \$64.95 |
| 205/75R15 | \$66.95 |
| 215/75R15 | \$68.95 |
| TOURING SIZES | |
| 185/70R14 | \$59.95 |
| 205/70R14 | \$65.95 |
| 205/70R15 | \$66.95 |
| 215/70R15 | \$70.95 |

FREE Mounting • FREE Life Of The Tire Rotation

LOW PRICES ON CAR, VAN & LT. TRUCK TIRES

| The Lowest Priced Whitewall Tire | The Lowest Priced All-Season Whitewall | The Lowest Priced 40,000 Mile Warranty Metric | The Lowest Priced Light Truck Radial |
|----------------------------------|--|---|--------------------------------------|
| \$15.95 P155/80R13 | \$23.95 P155/80R13 | \$26.95 155SR12 | \$54.95 P195/75R14 |
| 165/80R13 \$27.95 | 165/80R13 \$31.95 | BLACKWALL | R.O.W.L. |
| 175/80R13 \$29.95 | 175/80R13 \$34.95 | 175/70R13 \$41.95 | P215/75R15 \$59.95 |
| 185/80R13 \$30.95 | 185/80R13 \$36.95 | 185/70R13 \$44.95 | P235/75R15 \$62.95 |
| 185/75R14 \$31.95 | 185/75R14 \$39.95 | 185/70R14 \$48.95 | 30X950R15 \$82.95 |
| 195/75R14 \$32.95 | 195/75R14 \$40.95 | 195/70R14 \$50.95 | 31X1050R15 \$88.95 |
| 205/75R14 \$35.95 | 205/75R14 \$42.95 | 205/70R14 \$52.95 | BLACKWALL |
| 205/75R15 \$35.95 | 205/75R15 \$43.95 | | LT215/85R16 \$84.95 |
| 215/75R15 \$38.95 | 215/75R15 \$45.95 | | LT225/75R16 \$88.95 |
| 225/75R15 \$39.95 | 225/75R15 \$47.95 | | LT235/85R16 \$94.95 |
| 235/75R15 \$39.95 | 235/75R15 \$48.95 | | LT245/75R16 \$104.95 |
| | | | LT875R16.5 \$87.95 |

KELLY TIRES

SAFARI AWR

\$59.95 • ALL POSITION STEEL BELTED LIGHT TRUCK TIRE GREAT ON/OFF ROAD TRACTION 195/75R14 SL

| | |
|------------------|----------|
| 205/75R14 LT SL | \$67.95 |
| 205/75R15 LT SL | \$69.95 |
| 215/75R15 LT SL | \$73.95 |
| 235/75R15 LT SL | \$80.95 |
| 950R15 LRC | \$109.95 |
| 1050R15 LRC | \$121.95 |
| 225/75R16 LT LRD | \$109.95 |
| 245/75R16 LT LRE | \$133.95 |
| 265/75R16 LT LRC | \$115.95 |
| 215/85R16 LT LRD | \$105.95 |
| 235/85R16 LT LRE | \$124.95 |

LOW PRICES ON TIRELLI MICHELIN BFGoodrich UNIROYAL

PAIR OF SHOCKS \$10 OFF! Expires 7/30/94
Reg. (unit price including installation) - \$29.95 most cars; 33.95 LT; 39.95 RV. Lifetime warranty. Not valid w/ other offers.

ANY BRAKE SERVICE \$7 OFF! JWTCO
Present coupon at time of purchase. Not valid w/ other offers. Expires 7/30/94.

JW JACK WILLIAMS TIRE & AUTO SERVICE CENTERS

| | | | | |
|--|---|---|--|---|
| KINGSTON 125 S. Wyoming Ave. 283-0551 | WILKES-BARRE Rt. 315, Plains Twp. 829-1991 | DALLAS 40 Memorial Hwy. 675-2100 | HAZLETON 23rd & Church St. 459-6670 | MOOSIC 4 Rocky Glen Rd. 457-5000 |
|--|---|---|--|---|

Other Convenient Locations: Scranton, Berwick, Selinsgrove, Shamokin, Stroudsburg

Monday To Friday 7:30am - 6:00pm
Saturday 7:30am - 3:00pm
We Welcome National Accounts

POT-HOLE ALERT

| | | |
|---|--|--|
| Front Wheel Alignment \$23.95 <small>with this coupon</small> | Lube, Oil, Filter Castrol Oil \$17.95 MOST CARS <small>With this coupon</small> | Four Wheel Alignment \$41.95 SHIMS EXTRA <small>With This Coupon</small> |
| \$5.00 Off State Inspection <small>With This Coupon</small> | Fuel Injection Cleaning \$39.95 <small>With This Coupon</small> | Front Disc Pads Lifetime Warranty \$59.95 MOST CARS <small>With This Coupon</small> |

| | | |
|---|--|---|
| Special Purchase Lee Paramount A/S With Wall Radial 50,000 Mile Warranty Road Hazzard Warranty 18570R14..... \$48.80 20570R14..... \$53.81 21570R15..... \$58.15 <small>While Supplies Last</small> | Hercules A/W Radial White Wall 15580R13..... \$28.98 16580R13..... \$30.90 17580R13..... \$31.50 18580R13..... \$33.50 18575R14..... \$35.90 18575R14..... \$35.90 19575R14..... \$38.50 20575R14..... \$40.50 21575R15..... \$44.00 22575R15..... \$47.00 23575R15..... \$49.90 | Struts & Shock 25% Discount With This Coupon Off Reg. Price Must Have Coupon Offer Expires 7-30-94 |
|---|--|---|

ELSTON & GOULD

AUTO SALES & SERVICE

U.S. RT. 309 • DALLAS, PA 18612

COMPLETE AUTOMOTIVE SERVICE
 - Serving the Back Mountain for over 40 Years -

675-3753 — 675-0864