

Honors and graduates

Named to Millersville Dean's List

Jennifer M. Presper, Dallas, was named to the Dean's List for the spring semester at Millersville University. Presper received a quality point average (QPA) of 3.5 or more.

Mansfield U. grads

Three Back Mountain students earned degrees from Mansfield University: Susan A. Balonis, Trucksville, BA Math; Actuarial Science; Alan E. Perrego, Lehman, BA Music Merchandising; Rebecca S. Sorber, Dallas; BSE Elementary Education.

Competes in all-star volleyball match

Jarrod Baranowski of Lake-Lehman High School participated in the 1994 East-West All-Star Volleyball match June 18 at Hempfield High School near Lancaster.

Sponsored by Mizuno Sports and the Pennsylvania Volleyball Coaches Association, the event featured outstanding players from throughout the state.

Earns special grant from Millersville

Leesa Sorber, Harveys Lake, was among the six Millersville University students who recently were presented a Neimeyer-Hodgson Grant.

A biology major, Sorber received \$338 to study the foraging efficiency of the American oyster-catcher as it relates to tide and relative time of day.



JESSICA FIELDS

Jessica Fields reads poem at Arts Fiesta

Jessica Fields, a fifth grade student at the Dallas Elementary School, has received honorable mention in the 1994 Fine Arts Fiesta Poetry Contest, sponsored by the Wyoming Valley Poetry Society.

Jessica read her poem at the Fine Arts Fiesta on May 22.

She selected the poem for the contest from the work in her writing folder in her process writing class at Dallas Elementary School. Mrs. Mary Nulton is Jessica's teacher.



We're big kids now!

Small Wonders Nursery School, Shavertown, recently held its graduation. Graduating students were: first row, from left: Bryan Cardillo, Bobby Vojtko, Paul J. Fostock; second row, Megan Sailus, Kayla Abbott, Katie Lord, Dana Corvey, Courtney Taylor; third row, Amanda Hartman, Gwynnie Dibble, Alicia Evans, Andrea Prokopchak, Alison Welch; fourth row: Sharon W. Jones, teacher; Nathan Anderson, Robert Yocum, Jonathan Kopcho, John Reilly, Cody Karalunas, Ian Schacht, Linda McLaughlin, teacher-assistant.

Graduates from Wilkes with straight A's

Darren Michael of Dallas was one of four Wilkes University students who received the 1994 Mable Scott Wandell and Sterling Leroy Wandell Awards, the university's highest academic awards.

The awards are presented to the male and female graduates who have attained the highest academic average for the four years at Wilkes University. Only 17 students in the 61 year history of the University, have earned a perfect 4.0 record.

Michael was also named the Outstanding Graduate Award from the School of Science and Engineering.

With a major in biology and a minor in chemistry, he will attend the University of North Carolina

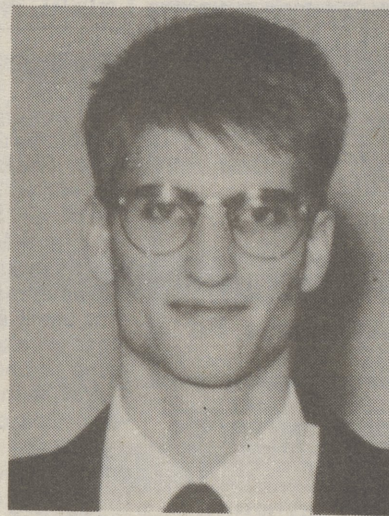
at Chapel Hill to pursue a Ph.D.

A recipient of a summer research grant, Michael has already worked in the laboratories at the University of North Carolina.

He was awarded with a Protein Engineering and Molecular Genetics Predoctoral Training Fellowship from the National Institute of Health and a Reilly Fellowship from U.N.C.

A member of the Chemistry Club at Wilkes, Michael also played soccer and tennis during his freshman and sophomore years.

He is the son of Mr. and Mrs. Clarence Michael of Dallas and a graduate of Dallas Senior High School.



DARREN MICHAEL



Old Masters through young eyes

The artwork of Matisse, Renoir, Van Gogh and others will be on display for a limited engagement, courtesy of second-grade students from Wyoming Seminary's Lower School.

As part of their unit on the works of the masters, student artists have created their own versions of the masterpieces, which hang in the lower gallery of the F.M. Kirby Center in Wilkes-Barre during the Children's Theatre Festival. Student artists from the Back Mountain are: first row, from left, Naveen Dasa, Ryan Gower, Allan Putney, Colin Madigan, and Justin Emershaw, all of Shavertown.

Standing, Vincent Insalaco, Whitney Pollock, Nicole Allan, Jorah Stern, Richard Eckman, all of Shavertown; Tyler Dropers, Dallas; Caitlin Conyngham, Shavertown; Ross Baltimore, Harveys Lake and Alana Allan, Shavertown.

Accepted at Pittsburgh U

Edward Pitcavage, a member of Lake-Lehman High School's class of 1994 has been accepted at the University of Pittsburgh.

He will begin his studies June 25, majoring in biology.

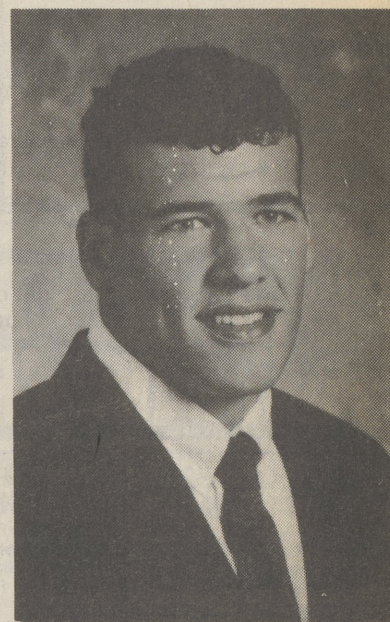
During his senior year Pitcavage was named Division II 1993 High School Football All-Stars.

In his junior year he was named to the 1992 2nd team Wyoming Valley All Scholastic Football Team.

Pitcavage excelled in wrestling and was the District II runner-up in the Wyoming Valley Conference, in his junior year.

He completed his high school career at Lehman as an honor student, and has successfully completed a four-year Seminary course at the Church of Jesus Christ of Latter Day Saints.

He is the son of Edward and Betsy Pitcavage of Chase.



EDWARD PITCAVAGE



POCONO INVISIBLE FENCING

Give your pet the freedom to run without being chained or penned up!

Customized to Fit Your Special Needs • Protect Your Garden Areas

Professional Installation and Training • Self Installation Kits Available

30 Day Money Back Guarantee • Free Estimates

P.O. Box 1673, Milford, PA 18337 (717) 296-7191

IN SCRANTON CALL: (717) 842-3362



Steven's Town & Country Cleaners

Country Club Shopping Ctr. • 675-0468

Preserving Fashion is Our Business

The best way to protect your clothing investment is with our quality -tested drycleaning. Dirt and soil are gently lifted out, colors and textures are restored. Keeping your fashions looking and feeling like new is what we're all about.



Steven's Town & Country Cleaners

Check Out Our New Store Hours
Mon. - Fri. 7 A.M. - 7 P.M. • Sat. 8 A.M. - 6 P.M.
The Professional Edge, The Personal Touch

A member of the International Fabricare Institute, the association of professional drycleaners and laundriers.

DISCOVER DUCKLOE

Located in Portland, Pennsylvania
(10 miles South of Stroudsburg on Rt. 611)

and be delighted by our factory discount prices.

Our showrooms and warehouse are filled with collections of furniture and accessories from the most prestigious manufacturers, including Stickley, Henkel Harris, Henkel-Moore, Hickory Chair, Statton, Harden, Wright Table, Hancock & Moore, Marlow, Peoploungers, Chapman, Maitland-Smith, Wildwood, Frederick Cooper, Waterford, LaBarge, Va. Metalcrafters & Sligh. Hitchcock and Bedding by Shifman.

HITCHCOCK TRUCKLOAD SALE

July 7, 8 & 9

WAREHOUSE SALE

July 7, 8, 9, 11 & 12

ORIENTAL RUG SALE

July 14, 15, 16 & 18

Our continuous arm chair clearly shows the construction of our Windsor chairs and benches.

All legs, arm post, and spindle holes are drilled completely through the seat and arms. Glue is placed in the hole, the legs, posts, and spindles are then secured in the holes. These parts are then split with a chisel and a wooden wedge, with glue driven down into the split to widen the parts in their holes creating a super tight fit.

This 18th century assembly method prevents the chair from becoming loose over years of use.

Something you never see, but it is important to know.

Side Chair Prices Starting at \$209

Solid Cherry Country Tables:

36" x 62" - \$1039

36" x 62" Extension w/2-15" leaves - \$1339

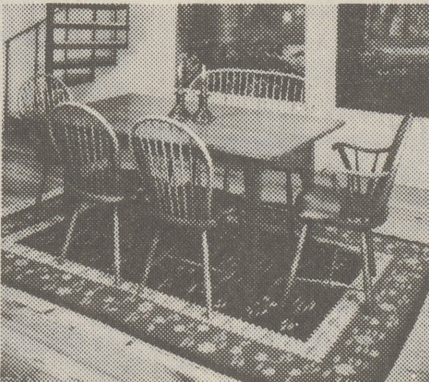
40" x 72" - \$1139

40" x 72" Extension w/2-15" leaves - \$1439

Armless Bishop White Settee - \$439

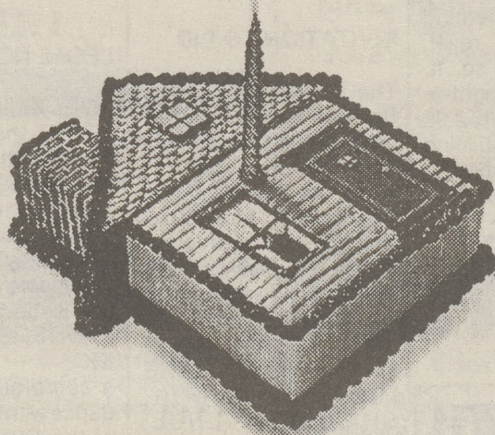
Oval Back Arm Chair - \$369

Oval Back Side Chair - \$249



Send \$6.00 for our 48 page full color Windsor chair catalog at Dept. P.O. BOX 427, PORTLAND, PA 18351 (10 miles South of Stroudsburg on Rt. 611)
TELEPHONE (717) 897-6172 • (717) 897-6173
Our only showroom location is in Portland, PA Monday - Saturday 9 - 5 CLOSED JULY 4th

Announcing ADT's \$120 Installation Offer



To Celebrate 120 Years of Helping to Protect America

Ever since 1874, thousands of people have depended on ADT Security Systems to help protect their homes and businesses.

That's because ever since our early "call box" days, ADT has had the reputation of using the most advanced technology available. Our Safewatch® Plus system is a perfect example. Linked to an ADT Customer Monitoring Center, we can monitor your home or business 24 hours a day, 365 days a year - and can notify police at the first sign of

trouble. And at ADT our commitment to your satisfaction is backed by our money-back Safewatch® Service Excellence Guarantee.

To celebrate our 120th anniversary, we're making it even easier to install an ADT system. And for a limited time you can get an ADT Safewatch® Plus security system installed in your home for the low price of just \$120* (regularly \$199 installed).

*Monitoring agreement required. Monthly monitoring fee is with credit card payment. Telephone connection required.

21.95

CALL 1-800-ADT-1012 TODAY FOR YOUR FREE SECURITY REVIEW

ADT Anniversary Special

\$120 Installation (regularly \$199) just install the ADT Safewatch® Plus system and mention this coupon when you call. Present it at installation. One coupon per installation. Valid on new systems only. Not valid with any other offer. Original coupons only. Offer expires 6/30/94



ADT. There's no safer place to be.

MORE FOR '94!

CUSTOM BUILT ON YOUR LOT!

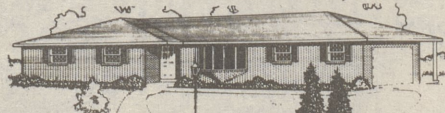
Come and See the ALL New & Remodeled CHELSEA I & CAMBRIDGE IV

Standard Features Now Include:

- Anderson Skylight • GE Dishwasher • Built-in GE Vented Microwave
- GE Self Cleaning Free Standing Electric Range • Upgraded Tiles for Hall & Master Baths (including Tile Ceilings in Tub Areas) • Vanities for 1/2 Baths • Wood Edging for Kitchen Counter Tops • Base Lazy Susan for Kitchens • Tri-View Mirror for Master Baths • and Much More!

Lock In Current Prices & Mortgage Rates Now for Sp '94 Construction

The Chelsea I - \$82,900



Model On Display

70' X 32' • All Brick • 2 Car Garage • Covered Rear Porch • 1505 Sq. Ft. Living Area

The Cambridge IV - \$74,400



Model On Display

56' X 28' Bi-Level • Oversized 2 Car Garage • 2000 Sq. Ft. Living Area

Call for a FREE Brochure & Price Sheet - 825-4077



MODEL HOMES ON DISPLAY
MODEL HOME HOURS:
Mon. - Thurs.; 12 - 8 p.m.;
Sat. & Sun.; 12 - 5 pm;
Closed Friday

DIRECTIONS TO THE MODEL HOME CENTER: Rt. 315 Wilkes-Barre, PA. Approx. 2 Mi. North of the Wyoming Valley Mall, just past entrance to Pocono Downs Racetrack