

10-mill tax hike in Lehman budget

By GRACE R. DOVE
Post Staff

The Lake-Lehman school board passed a \$15,499,491 tentative budget with a 10-mill increase for Luzerne County residents and a seven-mill increase for Wyoming County residents at a special meeting May 19. Allen Moss, Edwin Kern and Patricia Gold voted against the measure.

The present millage rates are 185 for Luzerne County and 85 for Wyoming County.

Based on the average school property tax bill of \$925, Luzerne County residents will pay \$50 more next year, while Wyoming County residents will see a \$70 increase over their average \$850 school tax bills.

"This budget is not final," Gold said. "It can still be worked; however I cannot support a double-digit millage increase."

She added that the board had only one meeting on the budget and no budget meetings with building principals. Board members had to read "reams of material" on the budget, she said.

"This budget was pushed through," she said. "Other districts start working on their budgets in January. I believe that the board has abdicated to the superintendent and financial manager to do this."

"I had no opportunity to scrutinize it," Moss said. "It was presented in a short period of time. Even if I had the time, I wouldn't have been able to study all of the

information."

Dr. John Presper said that he voted for the tentative budget because "you have to have something to work with."

"I would not be able to support this budget in 30 days," he said.

"We should study alternative methods of funding, such as an amusement tax and a commuter tax, so that we can spread the misery among the greatest number of people."

Presper added that the district was also considering contracting out its cafeteria and custodial services.

The board has until June 30 to adopt a final budget. Until it does, the tentative budget is available for public review and comment.

Shrinking federal aid, taxes hit budget

By GRACE R. DOVE
Post Staff

Decreases in federal funding and earned income tax collections have forced the Lake-Lehman school district to tighten its belt one more notch, although the district will end the present school year spending \$112,717 under budget.

"As of April 30, our earned income tax is down 5.9 percent," district financial manager Ray Bowersox said. "Based on our estimates from 1992-93, we had anticipated \$925,000 in the earned income tax and will come in with about \$863,000. We're down about \$62,000 or two mills."

Blaming the recession for a decrease in incomes, Bowersox said that he expects the region to be one of the last to recover from it.

Applied against wages and interest income, the earned in-

come tax isn't levied against unemployment compensation, pensions or disability payments, he said.

The 1990 census, used to compute federal and state subsidies to school districts, shows a 50 percent decrease in low-income families living in the district, Bowersox said.

The decrease in low-income families has resulted in less federal and state money for the district.

"Possibly some people didn't return their census forms," Bowersox said. "They may have felt that their income wasn't any of the government's business, but their not responding hurts the school district through funding cutbacks. It's a vicious cycle."

Bowersox said that the teachers' salaries are up 3.6 percent, or about \$219,979 - about seven mills.

The district's contributions for Social Security, retirement and

workmen's compensation have also gone up, he said.

Federal funding is down \$36,797, or 8.9 percent from last year, according to the tentative budget.

Cutbacks include \$94,133, or 17 percent, in support services instructional staff and \$31,045, or 2.4 percent, in special programs.

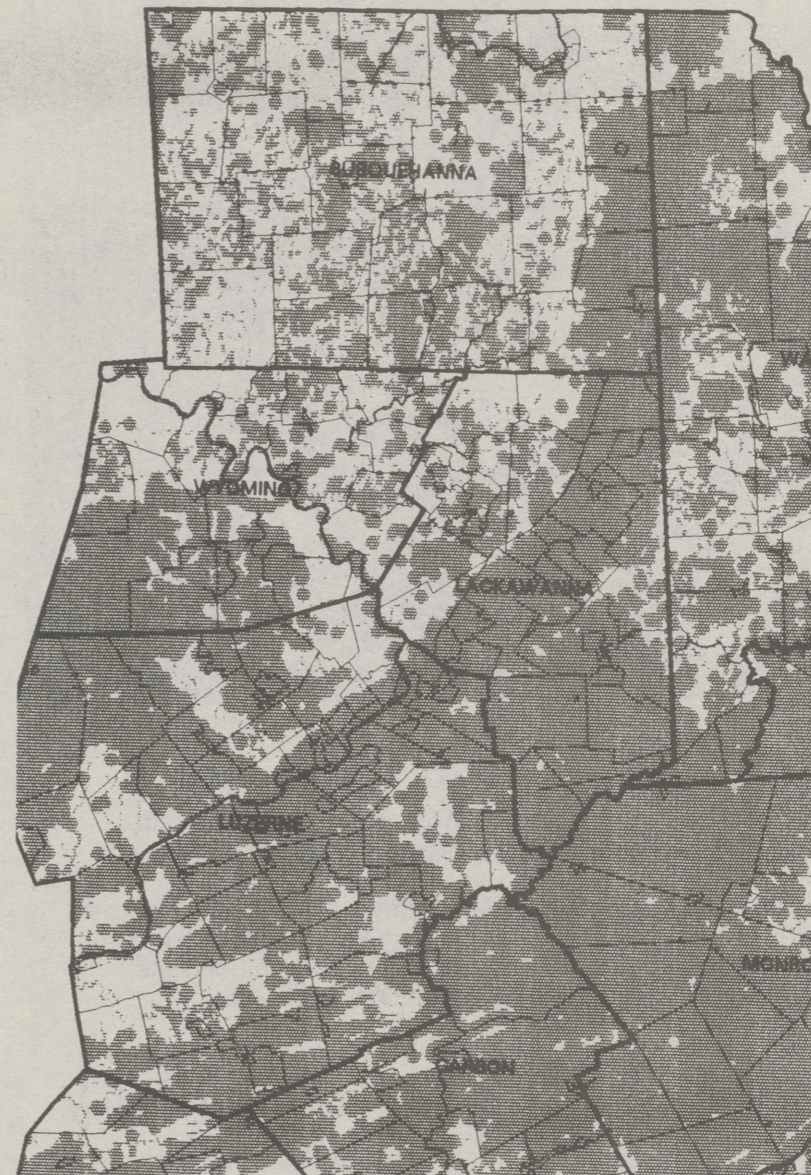
A five-year capital note for \$150,000 will be used for necessary repairs - repaving driveways and parking areas, replacing oil tanks and installing leak detection devices on them, Bowersox said.

The district will pay off 20 percent of the note and interest on the unpaid balance each year.

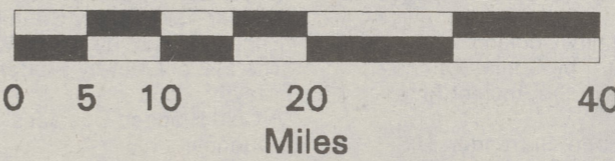
"Last year we came in \$112,717 under our projected budget of \$14,915,760," Bowersox said. "This year's budget will maintain our present programs without adding anything new."

Nuke dump

(continued from page 1)



Scale 1:1,000,000



Representative size of 500 acres

Explanation: The shaded areas represent areas identified as *disqualified* at the completion of Stage Three of the disqualification process.

National Register of Historic Places or owned by the Pennsylvania Historical Museum Commission.

• Any area which could be inundated by a nearby dam.

"We're still tracking the agricultural security areas, which are coming in at about 2,000 acres a month," said Michael Murphy of DER's Bureau of Radiation Protection.

Low-level radioactive waste includes medical diagnostic tools, such as X-rays, items used in radiation treatments and radioactive implants, as well as tools, filters, clothing and waste sludge from nuclear power plants. They can be radioactive for up to 500 years.

The low-level nuclear waste disposal facility in Barnwell, SC, is slated to close June 30, making it necessary to build a replacement.

DER will review the remaining eligible portion of the state and identify between 50 and 100 potentially suitable areas for the disposal facility and release them by late 1994.

From these areas, three potentially suitable sites will be submitted to the Environmental Quality Board in the spring of 1995.

Public hearing on disqualified areas June 7 at the Woodlands Inn

DER will hold a public hearing on the areas disqualified to date June 7 at The Woodlands Inn on Rte. 415 in Wilkes-Barre between 1 and 10 p.m., with formal presentations at 2 and 7:30 p.m., when detailed maps will be available for public inspection.

"People will be able to locate their homes and properties on these maps to find out if they live in a disqualified area," Murphy said.

School Taxes

Lake-Lehman School District — 1987 to 1995

School Year	Total Budget	Dollar Increase	% Increase	Millage	Millage Increase	Dollars Per Mill
1987-88	\$9,071,291	939,093	11.5	123	5	24,132
1988-89	\$9,782,827	711,536	7.8	128	5	25,465
1989-90	\$10,882,474	1,099,647	11.2	133	5	26,898
1990-91	\$11,342,180	459,707	4.2	151	18	27,664
1991-92	\$13,043,724	1,701,544	15.0	176	25	28,881
1992-93	\$14,228,780	1,213,856	8.5	185	9	29,960
1993-94	\$14,915,760	686,980*	5.4	185	0	29,855
1994-95**	\$15,499,491	583,731	3.9	195	10	30,377

Millage figures are for Luzerne County only, and do not reflect Wyoming County.
*The current school year has come in under budget. Total expenditures are actually \$14,803,043, which is \$112,717 lower than originally expected.
** Tentative budget

Yellow Rose Horse Club's show June 4

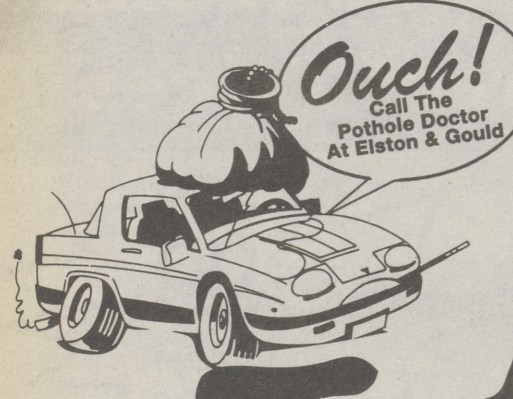
The Yellow Rose 4-H Club will sponsor its Sixth Annual Barrel Racing Horse Show, June 4 at the Luzerne County Fairgrounds on Rt. 118, starting at 1 p.m., rain or shine.

Youth riders on their ponies will compete in timed events, followed by Amateur and Open Divisions for both men and ladies.

Exhibitors will be coming from New York, New Jersey, Maryland and all across Pennsylvania to compete for some big prize money classes. Admission and parking are free.

The Yellow Rose 4-H Club will have refreshments available. For more information call 477-2204 or 256-3531.

Tell our advertisers you saw them in *The Post*. They'll be glad you did, and so will we.



POT-HOLE ALERT

Front Wheel Alignment \$23.95 With this coupon	Lube, Oil, Filter Castrol Oil \$17.95 MOST CARS With this coupon	Four Wheel Alignment \$41.95 SHIMS EXTRA With This Coupon
\$5.00 Off State Inspection With This Coupon	Fuel Injection Cleaning \$39.95 With This Coupon	Front Disc Pads Lifetime Warranty \$59.95 MOST CARS With This Coupon
Special Purchase Lee Paramount A/S With Wall Radial 50,000 Mile Warranty Road Hazzard Warranty 1857OR14..... \$48.80 2057OR14..... \$53.81 2157OR15..... \$58.15 While Supplies Last	Hercurles A/W Radial White Wall 1558OR13..... \$28.98 1658OR13..... \$30.90 1758OR13..... \$31.50 1858OR13..... \$33.50 1857R14..... \$35.90 1957R14..... \$38.50 2057R14..... \$40.50 2157R15..... \$44.00 2257R15..... \$47.00 2357R15..... \$49.90	Struts & Shock 25% Discount With This Coupon Off Reg. Price Must Have Coupon Offer Expires 6-1-94

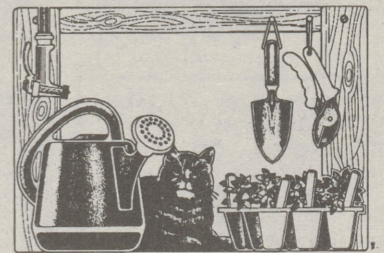
ELSTON & GOULD
AUTO SALES & SERVICE
 U.S. RT. 309 • DALLAS, PA 18612
COMPLETE AUTOMOTIVE SERVICE
 — Serving the Back Mountain for over 40 Years —
675-3753 — 675-0864



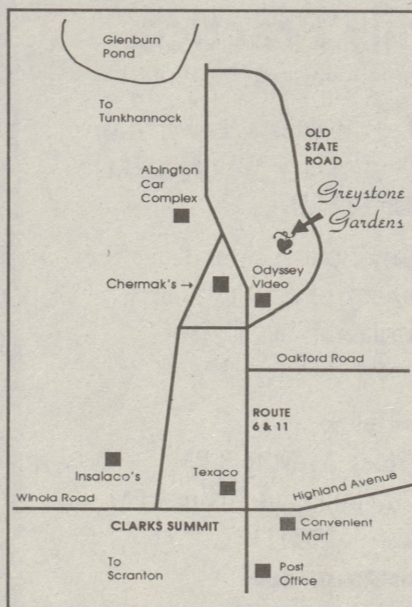
Greystone Gardens is a specialist garden center nestled in a beautiful woodland setting in the heart of Clarks Summit. The grounds are landscaped on the theme of an English cottage garden — a walk through our flower gardens and sales areas will give you plenty of design ideas for your own garden as well as a great deal of pleasure. Whether you are looking for a particular kind of plant or just some good advice, you'll be sure of a friendly welcome.

Display Attractions

- Shade Gardens
- Drystone Wall Plantings
- Trellis Garden
- Mixed Borders
- Perennial Borders
- Raised Beds
- Autumn Flowers
- Winter Effects
- Early Spring Gardens
- Water Gardens
- Rock Gardens



HOURS:
 Monday through Friday
 10 a.m. until Dusk
 Saturday & Sunday
 10 a.m. until 6 p.m.



We Offer

- Reliable Favorites
- Unusual Shrubs
- Hardy Perennials
- Hardy Roses
- Climbers
- Ground Cover
- Gardening Books
- Top Quality Garden Tools & Accessories
- Pond Supplies
- Courteous and Knowledgeable Staff
- Sensible Advice & Ideas
- Seminars - June
 Container Gardening and July Water Gardening



"Jolly Good Plants At Jolly Good Prices"

829 OLD STATE ROAD, CLARKS SUMMIT, PA 18411 • 586-5493