

Heat and cooling from Earth

Imagine a system that can supply both home heating and cooling. Now consider that it does so using the natural energy of the sun that's stored in the ground beneath the earth's surface. Sound incredible? No, it's an electric technology that's beginning to give home owners economical, energy-efficient, and environmentally friendly temperature control all-year round.

Geothermal systems are the most energy-efficient of all heating and cooling systems. Geothermal systems are typically two- to three-times more efficient and economical than the one your home is using now, according to the Edison Electric Institute and the National Rural Electric Cooperative Association, two national electric utility trade associations.

The sun is the optimum heat source because it's constant, safe and renewable. The earth, with a large surface area, infinite storage capacity and no maintenance required, is the perfect solar collector. And although the earth air temperatures fluctuate, the ground just below the surface maintains a constant year-round temperature.

Conventional heating and cooling systems use energy to "manufacture" heat. Geothermal heating and cooling systems are more economical because two-thirds of the energy used in geothermal systems already exists as solar heat absorbed by the earth. The remaining third is required for the heat pump unit itself to move this heat.

During the winter, the fluid circulating through an underground closed loop of durable thermoplastic pipe absorbs heat from the earth and transports it to the heat pump, which extracts and elevates the heat and transfers it indoors.

In the summer, the heat pump removes heat from the indoor air and transfers it, via the liquid in the pipe system, to the cooler ground, where it is absorbed. All the time, the earth is either dissipating or replacing the heat that the heat pump system has either rejected or extracted from the building on the earth's surface.

Since the earth's temperature remains nearly constant—cooler than hot summer air, but warmer than cold winter air—the performance of the system is affected very little by changing temperature and humidity levels. These temperate operating conditions result in low maintenance and longer life of the system.

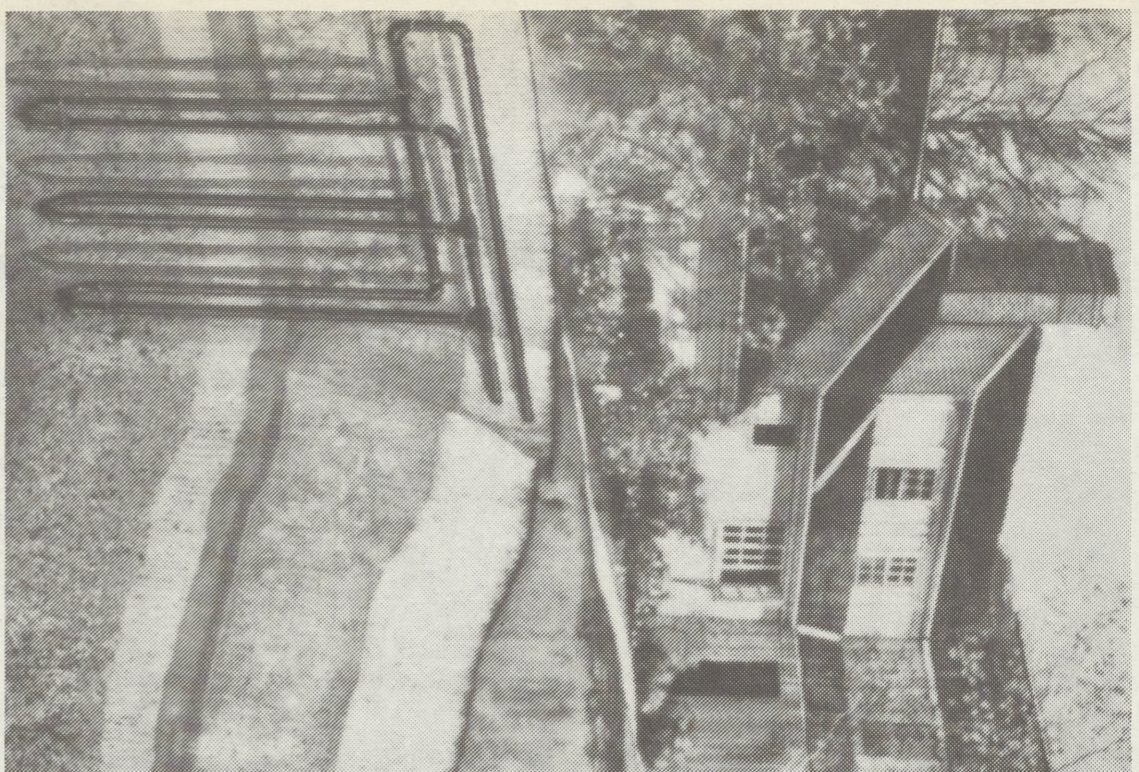
Windows waste most energy

Windows rob heat from your house in the winter, and coolness in the summer. In fact, more heat is lost—gained—through windows than through any other area of the house.

Conduction is one way heat passes through windows. In this manner, the house's warmth is gradually conveyed through the window pane. A window made of single-pane glass (R-value of approximately 1.0) transfers heat al-

most 14-times faster than a well-insulated wall. Adding a multi-pane window, one with either two- or three-panes of glass, will raise the window's R-value approximately 1.0 for each additional pane of glass used.

Using a gas denser than common air, such as argon or carbon dioxide, between the panes of glass, is another effective way to slow conductive transfer of heat.

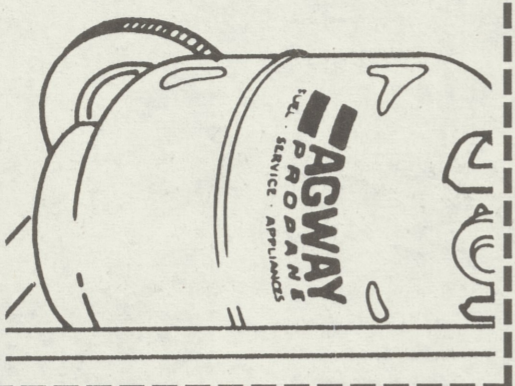


A geothermal heat pump uses the heat stored in the earth.

AGWAY SAWERS

\$1 OFF REFILL

Have your propane cylinder filled and ready for use with your gas grill. Bring this coupon to any participating location and save \$1.00 on a propane cylinder fill-up. Limit one coupon per cylinder. Offer good on portable cylinders only. Offer expires 5/31/94



Introductory Propane Offer

Sign up as a new Agway Propane customer and get our total worry-free service package:

- Tank with up to 100 lbs. of propane
- Free Gas Check® Inspection
- Free Installation

Offer expires 5/31/94. Cannot be combined with any other offer. Valid only within service area of a participating Agway Energy Products location. One coupon per household.

AGWAY ENERGY PRODUCTS

60 Pittston Ave., Pittston

FUELS • SERVICE • EQUIPMENT

1-800-865-FUEL • 654-2798 • 829-4466

"We Deliver Peace of Mind"

Ceramic tile is still a favorite

When planning a new kitchen or bath, remember to ask yourself some important questions, such as how much traffic your floors will endure. Is wear an important consideration? Do you spend a lot of time in the kitchen?

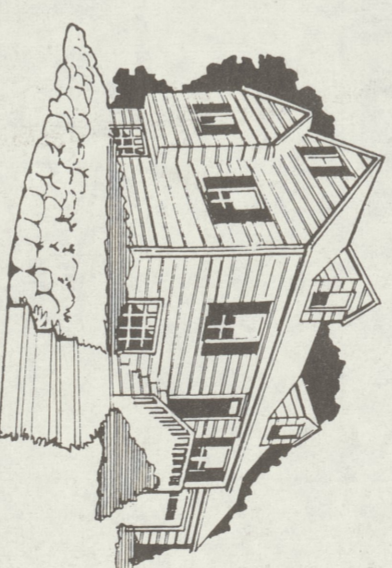
If you've answered "yes" to the above, you may want to consider ceramic tile for your new upgrade or addition. Ceramic tile won't dent, scratch or burn, clean up is easy with a damp sponge or mop and you can customize

your room to your own personal sense of style! No other home furnishing material allows you greater flexibility when decorating your kitchen or bath!

Ceramic floor tile is available in a range of popular sizes, from 8" x 8" to 12" x 12". Choose from textured stone looks in easy care ceramic tile to 10" octagons with coordinating or contrasting dots. And remember that many ceramic tile lines now allow you to coordinate your floors and walls!

ALUMINUM SIDING PAINTING AND CLEANING

We Are The Experts And WE GUARANTEE 100% SATISFACTION



Complete Aluminum Siding Refinishing

Interior Painting Available

AWnings
STEAM CLEANING SERVICES:

Siding Cleaning • Decks
Patios, Driveway Degreasing
Patio / Moss Removed
Much More

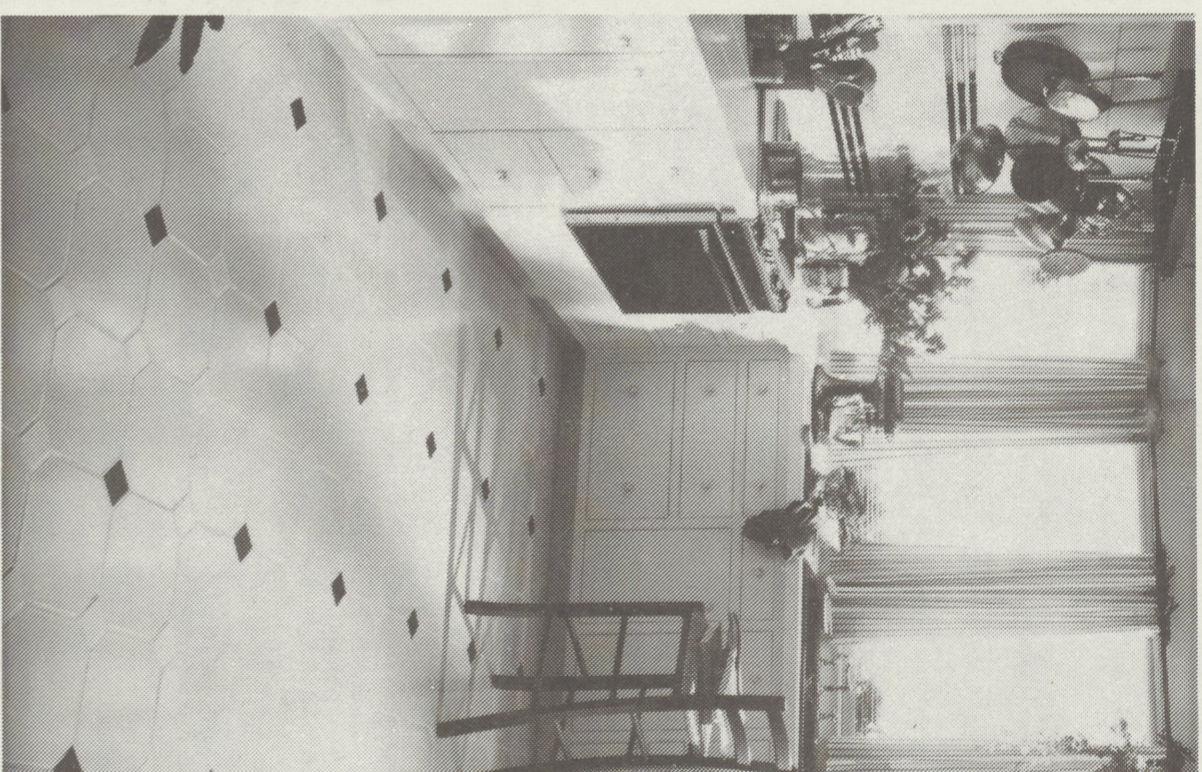
WEATHER DAMAGE SPECIAL
\$100 OFF WITH THIS COUPON \$20 OFF
EXTERIOR PAINTING ROCCOGRANDI EXTERIOR CLEANING
(ON ANY NEW BUSINESS) PAINTING CO. (ON ANY NEW BUSINESS)

We thoroughly hi-pressure steam clean your exterior siding/gutters, soffits, eaves, foundation. We treat stubborn surfaces with hypochlorite for moss prevention and caulk exposed areas. We spotprime where needed (exposed surfaces). We apply a premium finish coat, color to be selected by homeowner for the entire exterior. We guarantee our workmanship 100% satisfaction. • 2 year labor, 10 year mfg. warranty. • We make you a proud, satisfied customer.

ROCCOGRANDI PAINTING CO.

Complete Cleaning / Painting Service

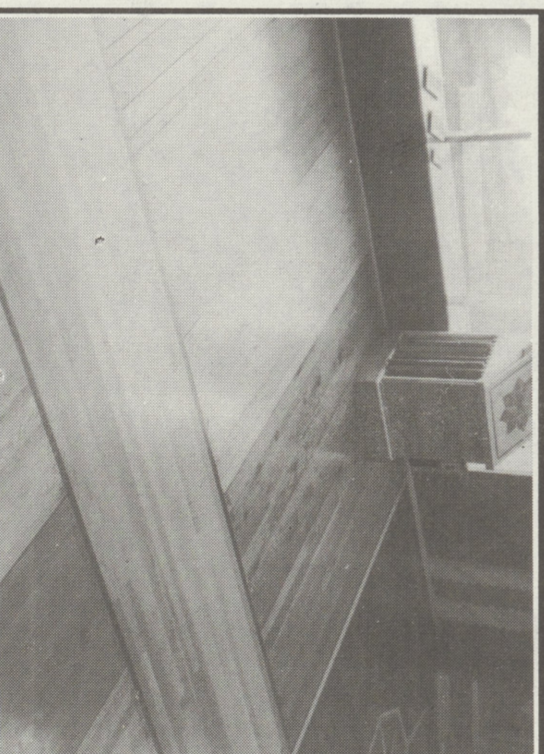
(717) 288-3792 • (717) 824-WASH



Ceramic tile adds a classic touch to kitchens, both on the floor and on countertops.

HEADS UP FLOORING CO., INC.

Est. 1976 - the Wood Flooring Specialist



Commercial • Residential
Sales • Service • Refinishing • Installation

• Sanding/Refinishing • Waxing/Polishing
• Free Estimates • Consulting

All Major Wood Flooring Manufacturers
• Free Estimates • Consulting

SEMPER SERVING YOU FROM 2 LOCATIONS...
23 Tener St., Lutzette Rt. 590, Hamlin
283-8488 (800) 564-3350