

Mozart Club slates April 19 performance

An open meeting and program is being planned by the Mozart Club of Wilkes-Barre to be held April 19 at 7:30 p.m. in the Church of Christ Uniting, Kingston. Connie DePasquale will lead the business portion of the evening, with Margaret Tremayne at the piano accompanying the Federation Hymn and Pennsylvania.

Following will be a program entitled Music of Contemporary International Composers. Ruth Martin is the chairman of the themed event and performers Gwen Moran and Betty Porzuczek, pianists, Trude Check, soprano, and Jonathan Pineno, clarinetist, will be featured. Linda Pineno and Ruth Reese will provide accompaniment.

Mrs. Martin's program will highlight music by well-known composers Poulenc, Suchon, Szalowski, Dvorak and Andrew Lloyd Webber. At the conclusion of the evening's festivities will be a reception of hospitality planned by Henry Johnson and David Hughes.

The evening's events are entirely free of charge. The Mozart Club is a member of the National and State Federation of Music Clubs.

BMT Seniors seek aid for homeless

The regular monthly business meeting of the Back Mountain Senior Citizens Club was brought to order by newly elected president, Irene Katyl.

In the absence of John Bosak, Irene Katyl gave the Monday morning bowlers report for the past two weeks, with gentlemen high bowlers being Ray Yuknavage and Joe Balavage and ladies were Louise Capozzi and Irene Katyl.

Interested bowlers meet on Monday mornings at 9:30 a.m. at Chacko Lanes. members observing birthdays this month are Ann Sorber and Elsa Maughan.

Arthur Dennis remains a patient at Wilkes-Barre General Hospital where he underwent surgery April 1.

Mae Prestangelo was welcomed as a new member. Fifty-fifty winners were Mary Wahlgren and Ray Yuknavage. Lillian Soveroski, who heads the "Sleeping bags for the Homeless" project requests old quilts, drapes, blankets or large pieces of materials to use in this worthwhile cause. She is at the church at 11 a.m. each of the meeting days to accept materials and assistance with the bags.

Ann Balavage, Planning Committee, announces the following: Project Head Ecumenical Services, April 15, St. Nicholas Church, Wilkes-Barre at 1:30 p.m.; April 23 and 24 "Dollies Follies" at the Kingston Senior Citizen Center; Back Mountain Club's Mothers' Day Luncheon, May 20, at noon; Fosco Luncheon, May 21.

The next meeting will be a social meeting, April 15, 1 p.m. Florence Precone, refreshment chairperson announced the following bakers: June Konek, Joseph Balavage and Nicholas Pericci.

The Back Mountain Senior Citizens is a nondenominational organization under Project Head with meetings the first and third Thursdays of each month, held at St. Therese's Church Hall, Shavertown at 1 p.m. unless otherwise announced.

Religious services

ST. PAUL'S LUTHERAN CHURCH - 196 N. Main St., Shavertown. 675-3859. Pastor Harold R. Baer, Jr. Worship, 8:30 a.m. and 11 a.m. Church School for all ages: 45 a.m. Holy Communion 1st Sunday of the month. Visitors welcome Tuesday Bible Study 9 a.m.

DALLAS UNITED METHODIST CHURCH - 4 Parsonage St., Dallas. 675-0122. Rev. Michael A. Bealla, Pastor. Morning Worship 10:30 a.m. Church School 9 a.m.

SHAVERTOWN UNITED METHODIST CHURCH - 163 N. Pioneer Ave., Shavertown. 675-3616. Pastors, Rev. James A. Wert, Rev. Harriet L. Santos. Music Dir., Rosento E. Santos. **SATURDAY:** 5:30 p.m., Chapel Service. **SUNDAY:** 9 a.m. and 11 a.m. Worship Services. **Visitors expected.** Sunday study classes, 9:45 a.m. **PHONE-A-PRAYER 675-4666.**

The most news
Still only \$16
The Dallas Post
675-5211



Day of Remembrance

The community is invited to join students at Penn State Wilkes-Barre Campus in a special program commemorating the Holocaust Day of Remembrance April 19, at noon, the Fortinsky Auditorium in the Center for Technology. Abe Plotkin of Scranton, Third Army Veteran who witnessed and photographed horrendous scenes when he helped liberate a Nazi concentration camp, will show his photographs and other documents. Plotkin was a young corporal in the spring of 1945 when his company went into Ohrdruf concentration camp. The 78-year-old Scranton native now is devoting much of his time to making sure the world never forgets the Holocaust. The Penn State program committee met recently with Mr. and Mrs. Plotkin and with Rabbi James Michaels of Temple Israel, who will participate in the program as well.

Standing from left, Rabbi Michaels, Joan Diana, Michele Stephanides, Lorraine Mrackowski, Mrs. Plotkin, Sean Kelly; seated, Ina Lubin, director of continuing education and Abe L. Plotkin.

Contemporary Christian music at St. Paul's April 18

St. Paul's Lutheran Church is pleased to announce a special worship service on Sunday, April 18 at 11 a.m. featuring the musical talents of 11 Bloomsburg University students.

Performing collectively under the name "Kingdom Vision", the group sings contemporary Christian music, including songs by Amy Grant, Keith Thomas, and

the group known as "First Call". "Kingdom Vision" is a music ministry team who spread God's Word through song, performing on the Bloomsburg University campus and in churches throughout Eastern Pennsylvania.

St. Paul's Sunday School students will also participate in this special service; a reception will follow. Everyone is welcome.

Dallas Baptist Church hosts mission conference April 18

World Mission Conference will be held at the Dallas Baptist Church, Harveys Lake Highway, Dallas, April 18 to 21.

The program, sponsored by N.E. Association is designed to acquaint the people with the Mission effort in cooperative program of Ministries at home and abroad.

Harold Crane Jr. will speak at the Sunday 11 a.m. service. He is a missionary serving as a church planter strategist for the Fla. Baptist convention.

Bobby Bunce is the speaker at the Sunday 7 p.m. service. He is a chaplain serving at the Marine Corps Air Station in Jacksonville,

North Carolina. He is endorsed by the Chaplaincy Division of the Home Mission Board.

Karen King will speak at the Monday 7 p.m. service. She is Communications Chairperson, Baptist Student Union, Cape Girardeau, Mo.

Mary Leech Love is the Tuesday evening speaker. She is a Southern Baptist Missionary to Guyana.

Rev. Stephen W. Bowers will speak at the Wednesday, 7 p.m. service. He is a Southern Baptist Missionary to Ecuador.

Refreshments will follow all services. The public is invited.

"With My New KiteTail CD, You Can Catch The Wind Of Rising Rates."

With the economic times improving, you need a CD that lets you ride the tails of soaring interest rates. But you also want a CD that allows for a sudden wind shift without great penalty.

That's Franklin First's new KiteTail CD.

Soar To New Heights

Open a new KiteTail at 3.50% interest per annum today with minimum deposit of just \$500. In a year, your interest rate will increase to 4.50%, and the next year it will bump up to 5.50%. By the fourth year, you'll be earning 6.50%, and, during the last year, 7.50% APR!

TERM	INTEREST RATE
48-60 months	7.50%
36-48 months	6.50%
24-36 months	5.50%
12-24 months	4.50%
12 months	3.50%

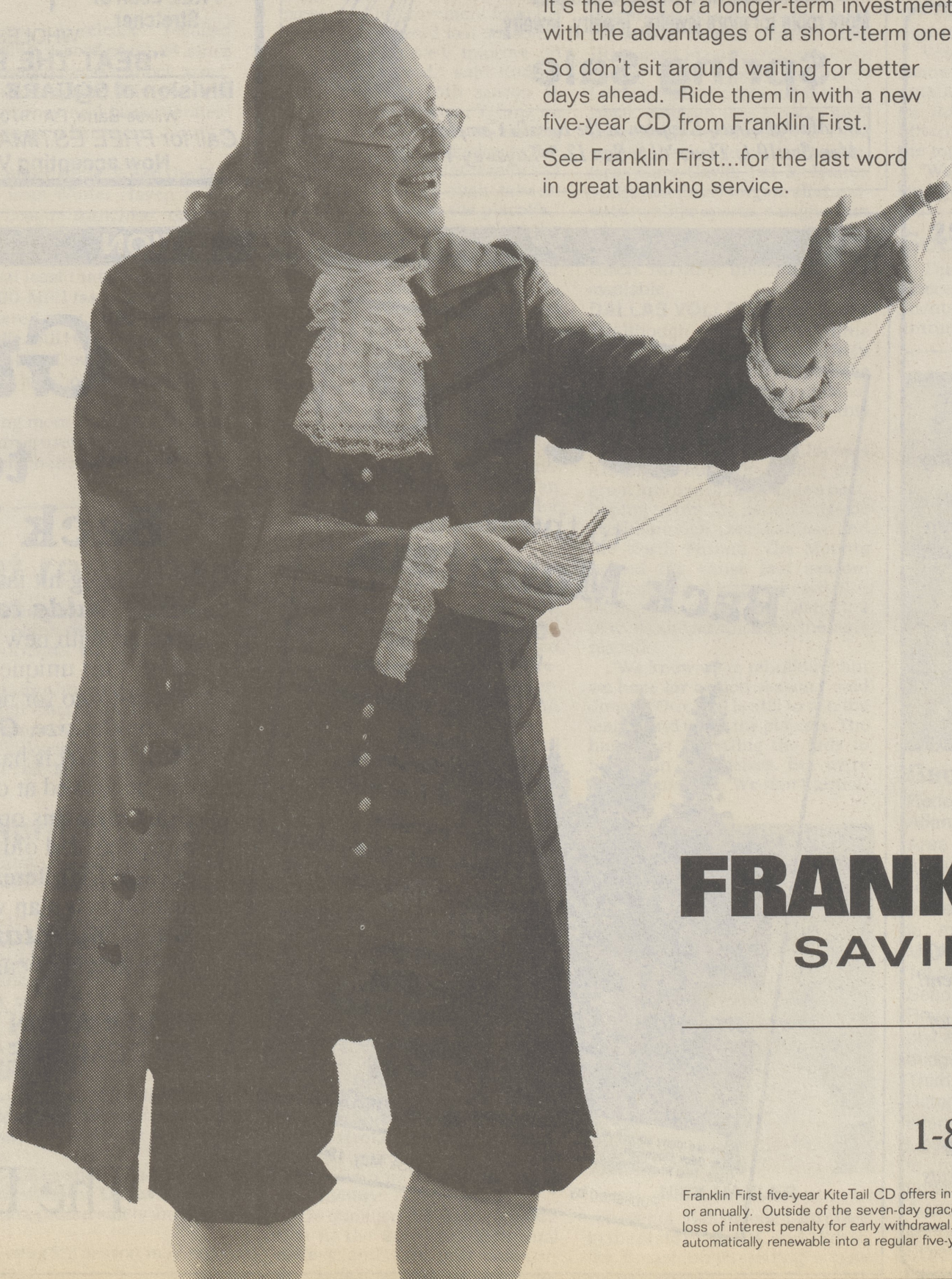
The KiteTail CD from Franklin First. This chart is an example of how interest rates will increase over a five year period.

Withdraw Without Penalty

If economic flexibility is important to you, you'll like Franklin First's KiteTail CD. At the end of the third year of your CD, you'll have a seven-day period during which you can withdraw without penalty. It's the best of a longer-term investment with the advantages of a short-term one.

So don't sit around waiting for better days ahead. Ride them in with a new five-year CD from Franklin First.

See Franklin First...for the last word in great banking service.



FRANKLIN FIRST SAVINGS BANK



Subsidiary of Franklin First Financial Corp.
Member Federal Deposit Insurance Corp.

1-800-262-1210

Franklin First five-year KiteTail CD offers interest compounded annually and paid monthly, quarterly, semi-annually, or annually. Outside of the seven-day grace period on the third anniversary of the instrument, there is a six-month loss of interest penalty for early withdrawal. No deposits may be added over the life of the CD. The CD is automatically renewable into a regular five-year certificate of deposit at the end of the term.