

Dallas Baptist Church fetes Pastor Pat

Dallas Baptist Church, Harveys Lake Highway, honored Pastor Pat Colladay, Sunday, March 7, his first anniversary at the church.

Mrs. Colladay, (Rhonda) was presented with a corsage. Pastor Pat a boutonniere at the 11 a.m. service.

The Colladays have a daughter, Kristina, 7 years old and a student at Dallas Elementary School. They reside in Midway Manor, Trucksville.



ERIKA AND ANDREA STEELE

Steele girls enter talent competition

Erika and Andrea Steele recently competed in their first vocal competition at the Winter Talent Olympics event, held in White Haven. Erika and Andrea are the daughters of Brent and Trudy Steele of Sweet Valley. They attend Ross Elementary School. Both sisters now study vocal and dance; vocal with former Lehman graduate and Miss PA '84 Gina Major, dance under the direction of Lisa Rees and Debbie Zielinski at Major Performing Arts Center (MPAC).

Erika took the first place trophy in the 3-6 year old division performing a character song to "How Much is That Doggie in the Window." Andrea sang "Gimme A Little Kiss" in the 7-9 year old division. MPAC is a full performing arts center headquartered in Pittston with satellite programs at the Wilkes-Barre C.Y.C. and the Scranton C.Y.C. the school offers instruction to toddlers through adults in dance, baton, vocal, piano, modeling acting and a 8-week "Mom and Me" courses.

Religious services

ST. PAUL'S LUTHERAN CHURCH - 196 N. Main St., Shavertown. 675-3859. Pastor Harold R. Baer, Jr. Worship, 8:30 a.m. and 11 a.m. Church School for all ages 9:45 a.m. Holy Communion 1st Sunday of the month. Visitors welcome Tuesday Bible Study 9 a.m.

DALLAS UNITED METHODIST CHURCH - 4 Parsonage St., Dallas. 675-0122. Rev. Michael A. Bealla, Pastor. Morning Worship 10:30 a.m. Church School, 9 a.m.

SHAVERTOWN UNITED METHODIST CHURCH - 163 N. Pioneer Ave., Shavertown. 675-3616. Pastors, Rev. James A. Wert, Rev. Harriet L. Santos. Music Dir., Rosento E. Santos. SATURDAY: 5:30 p.m., Chapel Service. SUNDAY: 9 a.m. and 11 a.m. Worship Services. Visitors expected. Sunday study classes 9:45 a.m. PHONE-A-PRAYER 675-4666.

ROBERT KRAUSE CONSTRUCTION CO.

CUSTOM BUILDER OF NEW HOMES

• 16 YEARS EXPERIENCE • Serving Luzerne, Lackawanna and Neighboring Counties

LICENSED SCHOLTZ BUILDER

MEMBER: NHBA
PHONE 586-3936

FINO'S PHARMACY
At The Light In Dallas
675-1141

We Fill Most Third Party Prescriptions



Special donation

In February, the Mercy Center Convent Auxiliary presented a check in the amount of \$10,000 to Mercy Center to benefit the retired Sisters of Mercy, Dallas Regional Community. The auxiliary donates many hours of time and effort throughout the year to various fund-raising projects.

Shown from left are: Dorothy Kolankiewicz, assistant treasurer; Joan Geise, corresponding secretary; Jeanne Heinbach, treasurer; Sr. Jayne Pruitt, RSM, administrator at Mercy Center; Sr. Esther Ann O'Konski, RSM, director of activities at Mercy Center; Genevieve Cortsen, president; Frances Dress, secretary; and Pauline Rydzefski, vice president.

Frances Slocum State Park seeks summer volunteers

Frances Slocum State Park is looking for people with an interest in having a fun and challenging summer. Frances Slocum has an extensive volunteer program which offers opportunities in a wide range of fields. Our most popular areas include: Child Educational Environmental Research, Tree and Wildflower Care, Bluebird Monitoring, Park Beautification, and our most recent addition Camp-ground Host.

Volunteering is a great method to gain valuable experience which

is otherwise hard to achieve. This year we are celebrating 100 years of State Parks in Pennsylvania and will be in need of additional volunteers for all the planned activities. Venture out and join our team for a few hours a week, we offer a very flexible schedule and work towards your interests as well as the Park's.

If you think you may have a few hours a week to spare for a little adventure, contact the Volunteer Coordinator, Jerry Kozlansky, at 696-3525. We hope to hear from you soon.

Four area residents train as Hospice St. John volunteers

Hospice Saint John, a division of Lutheran Welfare Service of Northeastern Pennsylvania, recently completed a volunteer training program for 18 Wyoming Valley residents.

After the six week hospice training program, some volunteers chose to work directly with pa-

tients. Others assist Hospice Saint John in fund raising, administrative work, clerical support, and other special services.

Among the volunteers at the final volunteer training session were Lucille Parker, Shavertown; Jean Wesley, Dallas, Pat Eckert, Dallas and Joan McCabe, Shavertown.

"With My New KiteTail CD, You Can Catch The Wind Of Rising Rates."

With the economic times improving, you need a CD that lets you ride the tails of soaring interest rates. But you also want a CD that allows for a sudden wind shift without great penalty.

That's Franklin First's new KiteTail CD.

Soar To New Heights

Open a new KiteTail at 3.50% interest per annum today with minimum deposit of just \$500. In a year, your interest rate will increase to 4.50%, and the next year it will bump up to 5.50%. By the fourth year, you'll be earning 6.50%, and, during the last year, 7.50% APR!

TERM	INTEREST RATE
48-60 months	7.50%
36-48 months	6.50%
24-36 months	5.50%
12-24 months	4.50%
12 months	3.50%

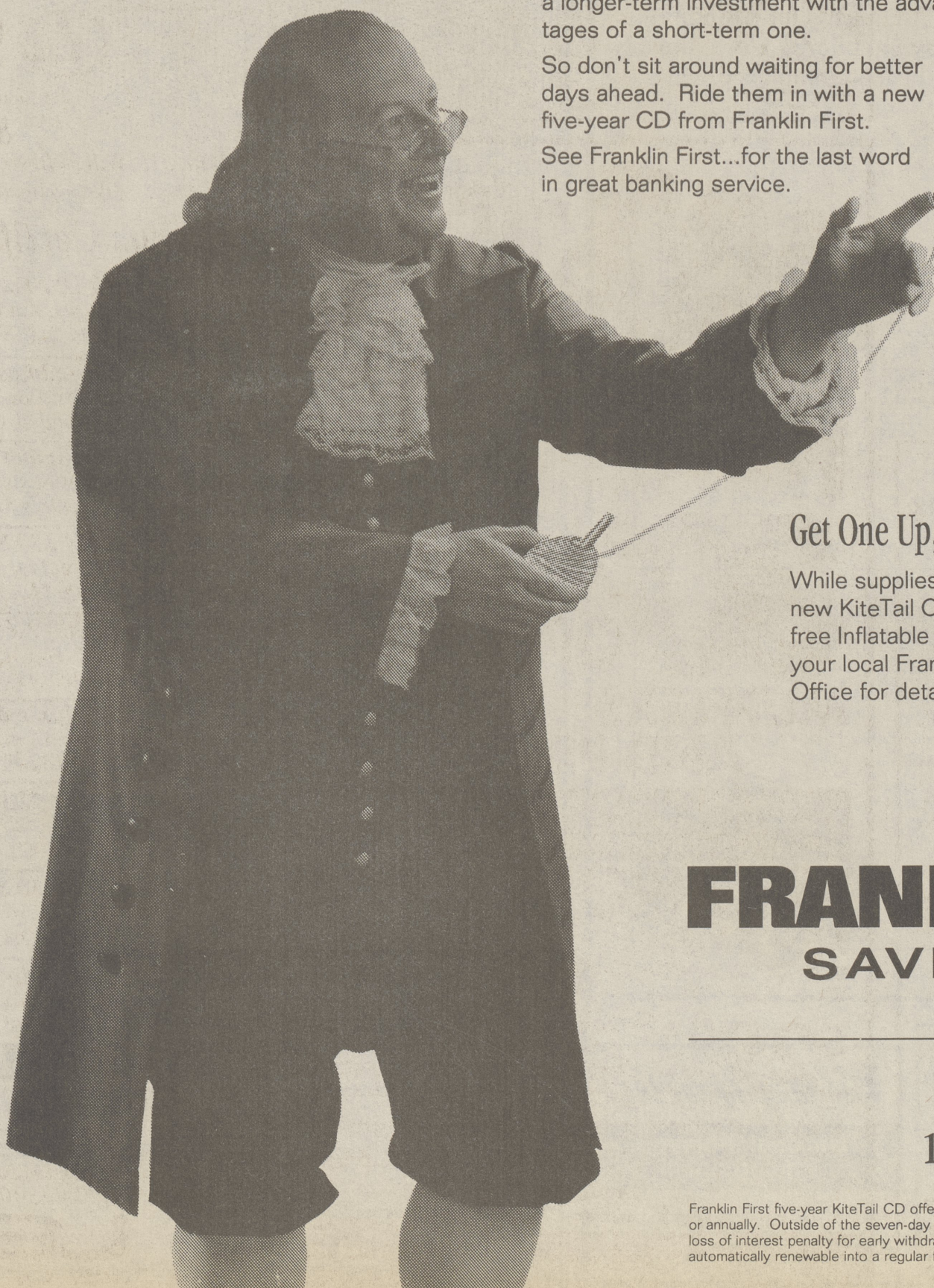
The KiteTail CD from Franklin First. This chart is an example of how interest rates will increase over a five year period.

Withdraw Without Penalty

If economic flexibility is important to you, you'll like Franklin First's KiteTail CD. In the third year of your CD, you'll have a seven-day period during which you can withdraw without penalty. It's the best of a longer-term investment with the advantages of a short-term one.

So don't sit around waiting for better days ahead. Ride them in with a new five-year CD from Franklin First.

See Franklin First...for the last word in great banking service.



Get One Up, TODAY!

While supplies last, open a new KiteTail CD and get a free Inflatable Kite. See your local Franklin First Office for details.

FRANKLIN FIRST SAVINGS BANK



Subsidiary of Franklin First Financial Corp.
Member Federal Deposit Insurance Corp.

1-800-262-1210

Franklin First five-year KiteTail CD offers interest compounded annually and paid monthly, quarterly, semi-annually, or annually. Outside of the seven-day grace period on the third anniversary of the instrument, there is a six-month loss of interest penalty for early withdrawal. No deposits may be added over the life of the CD. The CD is automatically renewable into a regular five-year certificate of deposit at the end of the term.