

Nearly Old booth holds 'finds' for many

As with several other booths, the women operating the Nearly Old booth have been working since last summer, accumulating and in some cases, refurbishing many lovely older items.

"Our items aren't old enough to be classified as antiques, but they're not really odds and ends either," said Maryann Daily. "I often rely on the intuition which I've acquired in eight years of operating this booth."

Old linens, silver, brass, furniture, needlepoint kits, bird cages, 1940's fashions and dolls that have not been loved as much as they

should have been are just a few of the many interesting items.

Mrs. Daily said that "Nearly Old" raised over \$2,600 last year, which she hopes to beat this year.

Betsy Walters and Carolyn Johnson have been working with Maryann, cleaning old silver, brass and linens.

"We work closely with the women running the Odds 'n Ends booth, often swapping things back and forth," Maryann said. "It's incredible what creative projects people can make with old things."

One customer collects old linen

hankies, which she makes into cocktail napkins. Another looks for old printed kitchen tablecloths, which she cuts and pieces together to make large patchwork picnic tablecloths.

An older customer is always looking for baskets, which she cleans, lines and decorates, filling them with small gifts for her friends in the hospital.

While spotting special "finds" at the Nearly Old booth, be sure to look for the Back Mountain Memorial Library Cookbook, which will also be sold there.

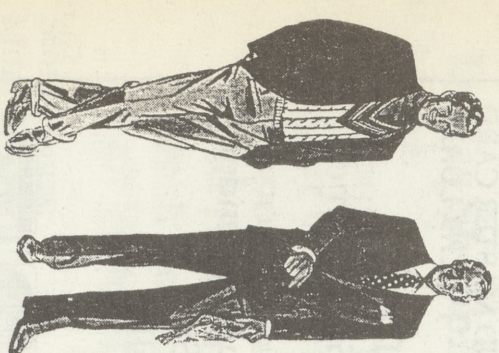
SEMI-ANNUAL SUMMER SALE

THE MORE YOU BUY - THE MORE YOU SAVE

-ON ALL IN STOCK MERCHANDISE



LACROSSE



- BUY 1 SUIT OR SPORTCOAT \$AVE 20%
- COMBINE 2 SUITS OR SPORTCOATS \$AVE 30%
- COMBINE 3 OR MORE SUITS OR SPORTCOATS \$AVE 40%

ALL OTHER IN STOCK MERCHANDISE

- BERLE SLACKS
- COTTON BROS. SPORTSWEAR
- ISLE OF COTTON SWEATERS
- TRAFALGAR BELTS
- EMILIO PONTI NECK TIES

250% OFF

MARIA

MEN'S CLOTHING 823-3458

325 North River St. Tuff Tex Complex Plains, PA 18705

CUSTOM CLOTHING AND SPECIAL ORDERS NOT INC. IN SALE



Dale's Office Supply

631 Memorial Highway, Dallas
Gus Walter's Complex

Serving the office needs of the Back Mountain and surrounding areas

Copies Fax

675-4620 • (Fax) (717) 675-4378

Monday - Friday 9:00 a.m. - 5:00 p.m.

When The Occasion Calls For something special, Call On Us!

Full Service Florist

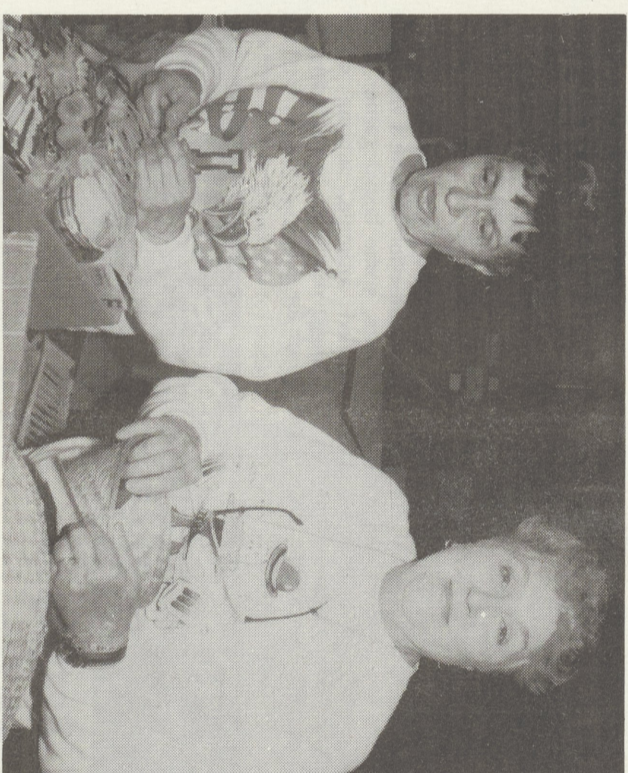
At Hill the Florist, we don't just follow the directions in a book when you place and order. We take pride in creating custom arrangements for any occasion...just like we've done for 75 years.

Hill the Florist
3 North Pioneer Avenue, Shavertown
696-1178

D.H. LIVING next Party

Invite us to your next Party

FOODS 550 Memorial Hwy, Dallas
675-0790



ODDS 'n' ENDS - Sybil Pelton and Mary George sort and price some of the thousands of items for the Odds 'n' Ends booth. Absent from photo: Jean Grimes and Marian Harvey. (Post photo/Grace R. Dove)

Plenty to pick from at Odds 'n' Ends

Perhaps the best description of what you will find at the Odds 'n' Ends booth is variety - everything from baskets, dishes and jewelry, to a pair of hubcaps.

Sybil Pelton, Mary George, Jean Grimes and Marian Harvey have been working since last July, separating and pricing thousands of garage sale-type items priced from 10¢ on up.

"Our booth is the perfect place for people setting up a college apartment, summer cottage, hunting cabin or first home," Mrs. George said. "Everything is in good condition and everything works. People have been bringing us things since last summer; we're very well stocked."

Many items are donated by private individuals or estates; Back Mountain Lumber also contributes Army's thrift store.

Two years ago, Odds 'n' Ends raised \$3,000, a goal which the women hope to beat this year. Nothing is wasted; any leftover items are donated to the Salvation Army's thrift store.

ECW COMPANY

Insurance and Bonding Specialists

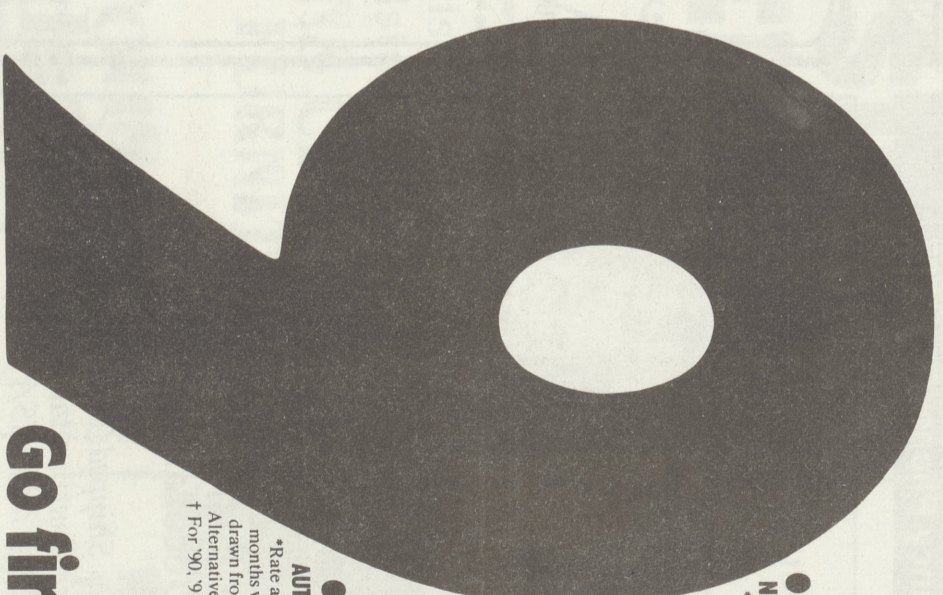
REVIEW YOUR PRESENT INSURANCE COVERAGES

With the aid of our comprehensive Insurance Coverage Checklist. Call today and one will be mailed to you with no obligation.

275 Mundy St. Wilkes-Barre

1-717-825-6891 Matthew J. Alfario,
1-800-242-1337 CPCU, CLU, President

Now that you've found the best rates...



.25% APR*
NEW AUTO LOANS

Rate applies to loans with terms up to 60 months when payment automatically withdrawn from your VCB checking account. Alternative repayment plans at 9.50%.

.5% APR*
USED AUTO LOANS†

Rate applies to loans with terms up to 36 months when payment automatically withdrawn from your VCB checking account. Alternative repayment plans at 7.99% to 11.99% for '90, '91 & '92 models only. Call for rates on other model years.

.5% APR*
AUTO REFINANCING LOANS‡

Rate applies to loans with terms up to 36 months when payment automatically withdrawn from your VCB checking account. Alternative repayment plans at 7.75%.

Go find the car!

There has never been a better time to buy a car. Dealers—hard hit by the recession—are offering unprecedented incentives to move inventory out of crowded lots and showrooms. But don't allow your savings on the sticker price to be eaten up by high-interest car loans.

Instead, clip this ad and carry it with you. Then, before you sign on the dotted line, compare those dealer-initiated rates with the super-low numbers you could be enjoying with a no-hassle loan from Valley Community Bank. After all... a great deal shouldn't stop with the price of the car.

Valley Community Bank

"We take banking personally."

Visit The ANTIQUE MARKETS AT The Barn In Lehman

Aug. 22 - 23
Aug. 28 - 29 - 30
Oct. 10 - 11

Over 35 Dealers Under Cover Market St. 675-4232