

THE DALLAS POST

# CLASSIFIED

Call 675-5211 to place your GUARANTEED RESULTS classified ad

Call  
**675-5211**  
Deadline:  
Mondays at 4:00 p.m.

## DOUBLE DOUBLE at Country Boy!

Country Boy Doubles your down payment up to \$1,500 (for a total of \$3,000) and Doubles your trade-in up to \$3,500 (for a total of \$7,000)! (This offer good on the following selected vehicles)

<b>1992 Olds 98 Regency</b> MSRP: \$26,074 Country Boy Price: \$24,995 Your Trade-In: -3,500 Double Trade: -5,000 Your Cash Down: -1,000 Double Cash Down: -1,000 <b>YOUR BALANCE: \$15,995</b>	<b>1992 Olds 88 Royale Sedan</b> MSRP: \$21,737 Country Boy Price: \$19,995 Your Trade-In: -3,500 Double Trade: -5,000 Your Cash Down: -1,000 Double Cash Down: -1,000 <b>YOUR BALANCE: \$10,995</b>	<b>1991 Olds 98 Regency</b> MSRP: \$25,219 Country Boy Price: \$23,995 Your Trade-In: -3,500 Double Trade: -5,000 Your Cash Down: -1,500 Double Cash Down: -1,500 <b>YOUR BALANCE: \$15,995</b>	<b>1991 Olds Ciera</b> MSRP: \$15,866 Country Boy Price: \$14,995 Your Trade-In: -2,500 Double Trade: -2,500 Your Cash Down: -1,000 Double Cash Down: -1,000 <b>YOUR BALANCE: \$7,995</b>
<b>1991 Pontiac Lemans</b> MSRP: \$10,045 Country Boy Price: \$9,495 Your Trade-In: -2,000 Double Trade: -2,000 Your Cash Down: -500 Double Cash Down: -500 <b>YOUR BALANCE: \$4,495</b>	<b>1992 Pont. Bonneville SE</b> MSRP: \$21,008 Country Boy Price: \$19,995 Your Trade-In: -2,000 Double Trade: -2,750 Your Cash Down: -2,750 <b>YOUR BALANCE: \$12,495</b>	<b>1991 Chev. Cavalier RS</b> MSRP: \$11,105 Country Boy Price: \$10,695 Your Trade-In: -2,000 Double Trade: -2,000 Your Cash Down: -500 Double Cash Down: -500 <b>YOUR BALANCE: \$5,695</b>	<b>1991 Buick Regal</b> MSRP: \$17,255 Country Boy Price: \$16,795 Your Trade-In: -2,500 Double Trade: -2,500 Your Cash Down: -1,000 Double Cash Down: -1,000 <b>YOUR BALANCE: \$9,795</b>
<b>1991 Buick Century Custom</b> MSRP: \$16,180 Country Boy Price: \$15,895 Your Trade-In: -3,000 Double Trade: -3,000 Your Cash Down: -1,000 Double Cash Down: -1,000 <b>YOUR BALANCE: \$7,895</b>	<b>1991 Olds. Cutlass Supreme</b> MSRP: \$17,045 Country Boy Price: \$16,495 Your Trade-In: -3,000 Double Trade: -3,000 Your Cash Down: -1,000 Double Cash Down: -1,000 <b>YOUR BALANCE: \$8,495</b>	<b>1992 Chev. Caprice Classic</b> MSRP: \$20,331 Country Boy Price: \$20,495 Your Trade-In: -2,500 Double Trade: -2,500 Your Cash Down: -1,000 Double Cash Down: -1,000 <b>YOUR BALANCE: \$13,495</b>	<b>1991 Pont. Transport Mini-Van</b> MSRP: \$19,194 Country Boy Price: \$18,495 Your Trade-In: -2,500 Double Trade: -2,500 Your Cash Down: -1,000 Double Cash Down: -1,000 <b>YOUR BALANCE: \$11,495</b>
<b>1991 Chev. S10 Blazer 4x4</b> MSRP: \$21,999 Country Boy Price: \$21,295 Your Trade-In: -2,500 Double Trade: -2,500 Your Cash Down: -500 Double Cash Down: -500 <b>YOUR BALANCE: \$14,295</b>	<b>1992 Chevrolet Lumina</b> MSRP: \$17,299 Country Boy Price: \$16,895 Your Trade-In: -2,000 Double Trade: -2,000 Your Cash Down: -500 Double Cash Down: -500 <b>YOUR BALANCE: \$11,895</b>	<b>1992 Olds Ciera</b> MSRP: \$16,150 Country Boy Price: \$15,995 Your Trade-In: -2,000 Double Trade: -2,000 Your Cash Down: -500 Double Cash Down: -500 <b>YOUR BALANCE: \$10,995</b>	<b>1992 Chevrolet Corsica</b> MSRP: \$14,130 Country Boy Price: \$13,895 Your Trade-In: -1,500 Double Trade: -1,500 Your Cash Down: -500 Double Cash Down: -500 <b>YOUR BALANCE: \$9,895</b>

Excludes any other advertised special.

**Country Boy**  
CHEVROLET • GEO • PONTIAC • OLDSMOBILE

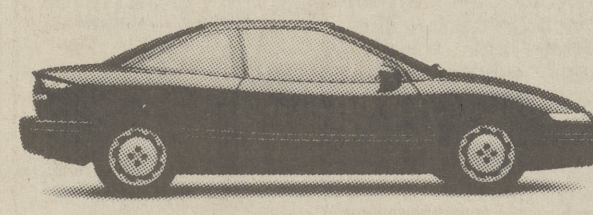
Rt. 11, Hallstead, PA 1-800-876-9402

DRIVE A LITTLE ... SAVE A LOT

Tax, title & tags extra.

Miles range from 6000 to 20,000. Sale includes Used Vehicles, Rental Vehicles & some Factory Cars. Use figures for comparison only. The trade-in value of your car may vary because of age, condition & mileage.

We're asking  
**\$12,275\***  
(SATURN SPORTS COUPE)  
And we won't  
take a penny  
more.



Nothing's below our bottom line. All those confounded add-ons — tax, tag, title, transportation and car prep — are included. Unfortunately, options aren't. That's why they're called options.

**A DIFFERENT KIND OF COMPANY.**  
**A DIFFERENT KIND OF CAR.**

**SATURN. OF WYOMING VALLEY**  
2140 SANS SOUCI PARKWAY, HANOVER TWP.  
A Ken Wallace Dealership  
**717-735-7761 1-800-SATURN 1**  
MON.-FRI. 8:30 'TIL 9 — SAT. 8:30 'til 5  
DIRECTIONS: Cross Valley to Kingston Exit 5, Right on Rt. 115 to W. Nanticoke, Rt. 29 to W-B (2nd Exit, Right 1/2 Mi.)

**FLAG A WINNER!**

Mr. Goodwrench **QUICK LUBE** plus  
IN  
**29 Minutes or IT'S FREE!**

**NO APPOINTMENT NECESSARY**  
CENTRALLY LOCATED FOR YOUR CONVENIENCE  
MON.-FRI. — HOURS — SATURDAY  
**8:00 A.M. thru 4:30 P.M. 8:00 A.M. thru NOON**

Bring your car in for a genuine GM oil change, lube and inspection. Then punch your stopwatch. If more than 29 minutes elapse before we complete your service, your next oil change is FREE.

In 29 minutes or less, here's what you'll get:

- Oil change (up to 5 quarts GM Goodwrench quality oil)
- AC oil filter
- Fluid level checks
- Brake fluid
- Differential fluid
- Rear wheel drive
- Transmission fluid
- Windshield washer fluid
- Inspection
- Drive belts
- Hoses
- Air filter
- Tire pressure

**ONLY \$21.95\***

\*MOST MAKES & MODELS OF CARS & LIGHT TRUCKS

**DISCOUNT GIFT CERTIFICATES AVAILABLE AT SERVICE DESK**

**INSTANT PRIZES NOW!**  
Win Great GM Cars, Trucks and More.

Visit our dealership for Mr. Goodwrench Quick Lube Plus service. You may be the winner of one of twenty-one great GM passenger vehicles. More than \$2 million in prizes are being given away.

**WYOMING VALLEY MOTORS**  
The Valley's Rapid Transit Authority  
560 PIERCE ST., KINGSTON 288-8567  
Across The Bridge From The Courthouse

**8.9% A.P.R. WE DARE YOU TO COMPARE!**

**1992 DODGE LUXURY TOURING VAN**

- Stock #215
- Air Conditioning
- Tilt Steering Column
- 6x9 Bright Power Remote Mirrors
- AM/FM Cassette
- Power Locks
- Color Coordinated Wall Fabrics
- Roof Rack
- Fold Down Sofa
- Walnut Trim
- Lighted Driver & Passenger Footwells
- 3.9 Magnum V6
- Automatic Transmission
- Deluxe Intermittent Wipers
- Cruise Control
- Power Windows
- Padded Carpet w/Scotchgard
- Overhead Lighting
- Running Boards w/Built-in Splash Guards

Deluxe Captain's Chairs  
Overhead Console w/Electrical Options  
Much More!

**SPECIALLY PRICED \$16,888\***

**WILKES-BARRE Dodge**  
A KEN WALLACE DEALERSHIP  
2150 Sans Souci Highway  
Hanover Township  
1-800-477-DODGE  
(717) 822-1120 - 735-2110

Open Mon. thru Fri. 8:30 A.M. 'til 9 P.M.  
Saturday 8:30 A.M. 'til 5 P.M.

**BONNER**

**CONTINUES ITS SPRING SELLDOWN**

**1992 4 DOOR CAVALIER**  
4 Cyl. Auto., Air Cond., RR Defogger, AM/FM Stereo w/Clock, Anti-Lock Brake System, Front Wheel Drive.  
20 CAVALIERS IN STOCK  
**YOUR COST \$9,695\***

**1992 2 DOOR METRO**  
5-Speed, Air Cond., AM/FM Stereo, Int. Wiper, Dual Mirrors, Full Wheel Covers, 50 Miles Per Gallon.  
**YOUR COST \$7,395\***

**1992 2 DOOR S-10 BLAZER**  
4.3 V6, Auto, Overdrive, 4-Wheel Drive, AM/FM Stereo, Folding Rear Seat, Tinted Glass, 4 Wheel Anti-Lock Brakes, Air Cond.  
**YOUR COST \$15,900\***  
(20 2 & 4 Dr. In Stock)

**1992 FULL SIZE PICKUP**  
4 Wheel Drive, 4.3 V6, Auto, Overdrive, HD Shocks & Springs, Engine Oil Cooler, Skid Plate, HD Radiator, On-Off Road Tires, Snow Plow Ready.  
**YOUR COST \$14,395\***

**1992 G20 CUSTOM VAN**  
Short Wheelbase, Capt. Chairs, V6, P/Windows & Locks, Air Cond., Cassette, Tilt & Cruise, Every Factory Option.  
**YOUR COST \$16,900\***  
Up to \$5,000 OFF Full Size Custom Vans, APVs, Astro Van • 25 In Stock

\*Price includes rebates & First Time Buyers where applicable. Tax & Tags Extra.

**SALE of ESTATE JEWELRY**  
May 15 - 9 - 4  
May 16 - 9 - 2  
Roth Jewelry  
659 Memorial Hw  
Dallas, PA  
675-2823

**PERSONAL**

**A BANKRUPTCY DIVORCE - \$150 WILLS - \$45**  
Payments O.K. Atty. Jim Beatrice, Rt. 309, Dallas, 675-3600. In Pittston, 49 S. Main. 655-3100. Plus Costs. 41-tfn-P

**DO YOU KNOW** the location of any member of the Class of 1953 Clarks Summit Abingdon High School? Please call 587-2813 or 587-1562. 17-4-P

**RENTALS**

**JERSEY SHORE** - Oceanside, neat and clean. 4 bedrm, 2 bath, June 6 to 13 \$425, Sept. 5-12, \$725; Sept. 19-26, \$425. 824-7630. 17-4-P

**2 BEDROOM MOBILE HOME**, references, security, lease, no pets. 333-4944. 19-4-P

**WANTED**

**CRAFT ITEMS FOR NON-PROFIT ORGANIZATION** that helps animals. Free or reasonable. 696-2954. 18-4-P

**WANTED TO SHARE**, mature person, non-smoker to share new 2 bedroom, 2 bath apt. on Lake. \$350 month includes utilities. 1 mo. security, available June 1 or July 1. 639-3061. 19-4-P

**TAMBOURINES** for ministry. Free or cheap. 287-4235 or 287-1409. 19-4-P

**RENTAL WANTED**

**PASTOR AND FAMILY** relocating to this area seeking rental housing in Dallas or Lake-Lehman School District. Desire 3-4 bedrooms, 1 1/2 baths. Call Huntsville Christian Church 675-0611 or 675-5901. 19-4-P

**WORK WANTED**

**WILL WATCH YOUR DOGS OR CATS**, Dallas and Harveys Lake area only. 639-5192. 17-5-P

**COLLEGE BOY** wants lawn work. Available May 18, call after 4 p.m. 675-6461. 19-4-P

**"The Futuristic" 1992 LUMINA APV**

**FRONT WHEEL DRIVE**

25 AVAILABLE

- Stock No. 722
- 3.1 V-6 Engine
- Tinted Glass
- Power Steering
- AIR CONDITIONING
- Rear Window Wiper/Washer
- Auxiliary Lighting
- And Lots More!
- 7-passenger Seating
- AM/FM Stereo
- ABS Brakes
- Electric Rear Defroster
- Automatic Transmission
- Sliding Side Door
- All-Season Steel Belted Radial Tires

**SPECIAL PRICE \$15,292\***

**S-P-E-C-I-A-L \$25992\*\***  
(a) 48 or (b) 36 Months GMAC SMART LEASE

\*Taxes, tags additional. All rebates and incentives applied. Subject to prior sale. \*\*Closed-end Lease. Rebate and/or low interest rate applied. \$1000 cash or trade down. (a) Total of payments, \$12,476.16; fees required, \$596.92; purchase option, \$7332.11. Allowable miles, 60,000. (b) Total of payments, \$9357.12; fees required, \$596.92; purchase option, \$8719.26. Allowable miles, 45,000. This is a coupon and must be presented.

**WYOMING VALLEY CHEVROLET/GEO**  
A KEN WALLACE DEALERSHIP  
"WE WILL NOT BE KNOWINGLY UNDERSOLD"  
†NON-TRADE DEALS ONLY

601 KIDDER ST., WILKES-BARRE, PA. 821-2772

**THE LEADER IN CUSTOMER SATISFACTION**  
Over 60 Years Of Quality Sales & Service  
694 Wyoming Ave., Kingston 287-2117

**Low Cost Contractors Insurance**

Air-Conditioning  
Appliances  
Carpentry  
Carpet/Fur. Cleaning  
Ceiling/Wall Inst.  
Electrical Work  
Fence Erection  
Floor Cov. Inst.  
House Furnishing Inst.  
Insulation Work

Interior Decorators  
Janitorial Services  
Lawn Maint./Gardening  
Masonry  
Painting  
Paperhanging  
Plastering/Stucco Work  
Siding Installation  
Television/Radio Inst. Work  
Tile, Stone, Mosaic Work

Call For More Information  
**BESECKER REALTY**  
Real Estate - Insurance  
10 Main Street, Dallas, PA 18612  
675-3611

**Painting -**  
Call today - Hank 945-9627 - 1-800-377-8750  
For a beautiful home at unbeatable prices.  
And Relax; we do the job right!  
Free, no obligation consultation and estimate.  
Get a free estimate now on any interior or exterior work needed in the spring.  
References - 25 yrs. Experience

**Save Big \$\$\$**  
- Fieldstone -  
Delivered To Your Job Site.  
\$45.00 Per Ton. We Deliver Bulk.  
Patios - Sidewalks - Pool Areas  
Fieldstone Walls  
Fieldstone Designs & Construction  
P.O. Box 340, Meshoppen, PA 18630  
717-833-2513  
"Free Estimates"

**PERSONAL LOANS**  
**\$500 TO \$5,000**  
Apply by phone or in person  
Mon. - Fri. 9-5  
Including Sat. 'til 1 P.M.  
Evenings by appointment  
Call  
**HOME CONSUMER DISCOUNT**  
116 S. Main St., Wilkes-Barre, Pa  
824-5717

More Classified, pg. 11