

Calendar

Calendar items are published free of charge. Generally, items will be published the two weeks prior to the event. To submit material, send it to The Dallas Post, P.O. Box 366, Dallas, PA 18612, or bring it to our office in the 309-415 Plaza in Dallas. Deadline is Friday at 3:00 p.m.

Exhibits

MAR. 8 THROUGH OCT. "AGNES: A FLOOD REMEMBERED" exhibit on the 20th anniversary of the Agnes Flood disaster. Wyoming Historical and Geological Society, 49 S. Franklin St., Wilkes-Barre. Opening reception, Mar. 8, 1-3 p.m. Hours: Tues.-Fri., noon-4 p.m.; Sat., 10 a.m.-4 p.m. 823-6244.

MAR. 8-22, 11TH ANNUAL SUZANNE MARIA ROSETTI MEMORIAL JURIED ART EXHIBITION, features work of junior and senior high school students from Back Mountain and Tunkhanopck areas. MacDonald Art Gallery, College Misericordia, Dallas. 674-6250.

MAR. 9-31, EILEEN BRENNAN. Quirky oil paintings. Kilburn room, Sheehy Student Center, King's College. Hours: weekdays, noon-5 p.m.; Sat. and Sun., 2-5 p.m.

MAR. 1-29, "NATURE AS MUSE: CONTEMPORARY WORKS BASED ON LANDSCAPE", paintings, prints, photographs by American artists. Featuring Roy Lichenstein, Ellsworth Kelly, William Kienbusch, John Beerman, Jerry Zeniuk, Rex Lau, Karl Schrag, Keith Jacobshagen. Sordoni Art Gallery, Wilkes University, S. River St., Wilkes-Barre. Preview and opening reception Feb. 29, 6-8 p.m. Hours: Noon-5 p.m. daily; Thurs., until 9 p.m. 824-4651, ext. 4325.

"ANTHRACITE YEARS." Permanent exhibit, from the formation of coal to the finished product. Wyoming Historical and Geological Museum, rear of the Osterhout Free Library, 71 S. Franklin St., Wilkes-Barre. Tues.-Fri., noon-4 p.m.; Sat., 10 a.m.-4 p.m.

"NATIVE AMERICANS IN WYOMING VALLEY AND ANTHRACITE MINING," Wyoming Valley Historical and Geological Museum, 69 S. Franklin St., Wilkes-Barre. Tues.-Fri., 10 a.m.-4 p.m.

"REILLY CLASSIC MOTORCARS MUSEUM". 100 classic and antique automobiles dating from 1901 to the 1970s. 175 Market St., Kingston. Hours: Sat. & Sun., 11 a.m.-5 p.m. \$4.98 for adults, \$2.49 for children. 288-7767.

KidStuff

WILKES CONSERVATORY CLASSES, Early Childhood Education classes in music and theatre for children, and acting classes for high school students. The Wilkes Community Conservatory, Wilkes University, Wilkes-Barre. Classes meet Wednesdays or Saturdays, 824-4651 ext. 4425.

Community

MAR. 6-7, SIXTH ANNUAL ANTIQUE SHOW AND SALE, Montrose Area High School, Montrose. Mar. 6, 5-9 p.m.; Mar. 7, 10 a.m.-4 p.m. Admission \$2. Homemade soup and sandwiches. Benefit Montrose High School Band.

MAR. 6, 13, 20, 27, LEISURE, GIFTS FROM ABOVE CHRISTIAN BOOKSTORE in Dallas will be showing Chuck Swindoll's Strengthening Your Grip six-part series on Friday evenings beginning in March at 7 p.m. Mar. 6, Priorities; Mar. 13, Aging; Mar. 20, Leisure; Mar. 27, Godliness. For further information, 675-0354.

MAR. 7, NITE AT THE RACES, Ildetown Fire Hall, Rte. 415, Harveys Lake. Doors open, 7 p.m.; Post time 7:30 p.m. Donation \$3. Refreshments included. Presented by Harveys Lake Lions.

MAR. 10, 84TH ANNUAL MEETING OF VISITING NURSE ASSN., Noon - 1:30 p.m., Ramada Hotel, Wilkes-Barre. Luncheon cost \$8.25 due in advance. Advance registration required (because of ordering lunch). Public invited. Call VNA, 283-0681.

MAR. 14, BAKED CHICKEN SUPPER, Loyalville United Methodist Church Hall, 4:30 p.m.-6:30 p.m. Sponsored by Chestnut Grove Club of the church Located Loyalville Road, West off Rte. 118 or East of 29. Menu includes Baked chicken, potatoes, stuffing, gravy, corn, cranberry sauce, bread and butter, pie, coffee, iced tea, and kool aid.

Music

MAR. 12, WOMEN OF THE CALABASH, African-American group. Walsh Auditorium, College Misericordia. 8 p.m. Free. 674-6400.

MAR. 13, KIM AND REGGIE HARRIS, duo performing pop, jazz and African American spirituals. Chicory House, St. Stephen's Episcopal Church, 35 S. Franklin St., Wilkes-Barre. 8:30 p.m. Doors open 8 p.m., \$6. 675-8843, or 823-7996.

MAR. 15, HASKELL SMALL, pianist and composer, performing all Gershwin program. Jewish Community Center, 60 S. River St., Wilkes-Barre. 7:30 p.m. Free. 824-4646.

INFORNIA DE CAMERA YOUTH ORCHESTRA SPRING CONCERT AUDITIONS. Open to all musicians age 7 to 18 years. in Northeastern Pennsylvania. The only requirements for membership are musical ability and interest. 822-4440.

Oratorio Society seeking members

Wyoming Valley Oratorio Society has recently entered its annual Membership Campaign, with the mailing of its renewal letters to past supporters, and other interested individuals and corporate firms.

The Spring concert, again as last year, will be performed in conjunction with the Singers Guild of Scranton. Featuring music of Bach and Stravinsky, it will take place in Friday, May 8, in St. Peter's Cathedral, Scranton, and in the Kirby Center, Wilkes-Barre, on Saturday, May 9.

Information on the concerts and support categories available may be obtained from chorus and board members, or by contacting the Society at 824-6125 or PO Box 2544, Wilkes-Barre, 18703.



ORATORIO SOCIETY CAMPAIGN COMMITTEE - Shown are members of the Campaign Committee of the Wyoming Valley Oratorio Society. From left, seated, Myron Leet, Mame Broody, president; Eileen Stewart, secretary. Standing, Susan Demidovich, chairperson; Margaret Vojtko.

Music

MOZART CLUB OF WILKES-BARRE, seeking new members. Two clubs available: Junior Club welcomes members up to age 17; for those 18 and older, the Senior Club is available. For information, call Senior Mozart Club, 288-1294; for junior membership, 823-2297.

At the Kirby

MAR. 5, "BARNUM" stage musical. 8 p.m., \$25 and \$22. Part of the 1991/1992 Broadway Series which includes "Pippin." Presented by the Kirby Center.

MAR. 8, THE ALLMAN BROTHERS BAND, rock group, 8 p.m. On sale now. Presented by Magic City Productions.

MAR. 10, 11, "MAGIC FOR THE '90S/DAVID COPPERFIELD," magic show. 5:30 and 8:30 p.m. \$22.50, and \$19.50 with \$2 discount for children 12 and under. Presented by Magic City Productions.

MAR. 13, HAL ROACH AND BARLEY BREE, Irish entertainers. 8 p.m. \$15. Presented by the Kirby Center.

Special Events

MAR. 10, "PSEUDO-LITERACY" lecture by visiting writer David Bradley. King's College, Burke Auditorium, McGowan Hall, North River and Union Sts., Wilkes-Barre, 8 p.m. Free. 826-5885.

MAR. 10, BUS TRIP TO PHILADELPHIA FLOWER SHOW, sponsored by Cider Painters of America. Bus departs Dallas. \$31 includes bus trip ticket and admission to the Flower Show. A tentative dinner stop is slated for the return trip at Houlihan's at the King of Prussia Mall. Complete schedule of lectures and demonstrations available upon request with bus trip reservation. 675-1911 or 675-4129.

MAR. 13, WYOMING ART LEAGUE ANNUAL DINNER, 6:30 p.m. Genetti Best Western Motor Inn, 77 E. Market St., Wilkes-Barre. Featured speaker Fred Brenner. "The History of Illustrating Children's Books" \$15. 287-0691, 823-7531.

THROUGH MAY 16, ASTRONOMY SESSIONS, with viewing sessions on clear nights using 8-inch Celestron telescope. Fri. & Sun., 8-10 p.m. Friedman Astronomy Dome, Penn State Wilkes-Barre, Lehman Twp. 675-2171.

Stage

MAR. 5-7, CABARET, Music Box Dinner Playhouse, 196 Hughes St., Swoyersville. \$25 for dinner and show; \$12 show only. Thurs.-Sat., 8 p.m. Bar opens at 6 p.m., dinner at 6:30 p.m.; Sunday matinees, 3:15 p.m. Bar opens at 1:30 p.m.; dinner at 2 p.m. For information or reservations, 283-2195. Group rates and Senior Citizen group rates available. VISA and MasterCard accepted.

MAR. 11, "MRS. STANTON & SUSAN" a one-woman performance by Miriam Reed, sponsored by Wilkes University Faculty Women's Caucus and Women's Studies Program, at Rumours, Arnaud C. Marts Sports and Conference Center, 8 p.m. Free admission. Open to the public.

Health

MAR. 9, 12, 17, 25 SUPPORT GROUPS OF RIVERSIDE ADULT DAY CARE CENTER, 220 S. River St., Plains. 3/9, Caregivers Support Group, 7:30 p.m.; 3/12, Parkinson's Support Group, 7 p.m.; 3/17, T.M.J. Support Group, 7 p.m.; 3/25, Alzheimer's Disease Support Group, 7:30 p.m. A moving entitled "Caring for the Caregiver" will be shown.

Health

MAR. 9, RED CROSS BLOODMOBILE, 10 a.m.-4 p.m., auditorium of Nesbitt Memorial Hospital's Medical Arts Building, 534 Wyoming Ave., Kingston. To ensure no waiting at the bloodmobile, appointments may be scheduled by call 288-8862. Donors also welcome to walk in.

MAR. 10, 24, FREE BLOOD PRESSURE SCREENINGS, No appointment necessary, Riverside Adult Day Care Center, 220 S. River St., Wilkes-Barre. Further information, 823-5161.

MAR. 11, OSTEOPOROSIS PREVENTION AND SUPPORT GROUP, presents videotape explaining risk factors connected with the disease. 1 p.m. auditorium of Medical Arts Building, 534 Wyoming Ave., Kingston. For information, Health Awareness Line 288-8862.

MAR. 11, ARTHRITIS CLINIC, Medical Arts Building, 534 Wyoming Ave., Kingston, beginning at 11 a.m. Persons with arthritis are invited to receive a screening of their condition and evaluation by John Carey, M.D. Results are forwarded to the patient's physician for consultation and follow-up care. Appointments required, all major insurances accepted. To sign up or receive more info, call Health Awareness Line, 288-8862.

ATTENTION WOMEN!

Thinking about going into business? Then this is the workshop for you.

"Starting & Managing a Small business"

Presented By Small Business Administration and SCORE (Service Cor. of Retired Executives)

CONTENT: Legal Aspects • Taxes & Records • Marketing • Financing • Insurance • Resources, Programs Available
WHEN: March 18, 9 A.M. to 4:00 P.M.
WHERE: Holiday Inn, Rt. 115 & 315, Wilkes-Barre
FEE: REGISTRATION FEE: - \$25.00 which covers all costs of the workshop including coffee, lunch & instructional material

REGISTRATION: CALL SCORE 826-6502

PIZZA PERFECT

Sicilian Style



16 Carverton Road, Trucksville

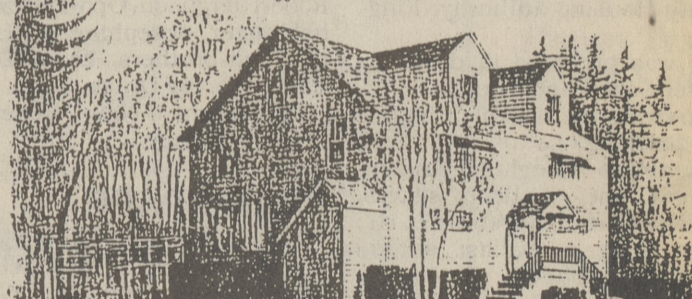
Call Ahead **696-2100**

Eat in or Take Out

Mon.: 4:00 pm - 10:00 pm
 Tues., Wed., Thurs.: 4:00 pm - 11:00 pm • Fri.: 11:00 am - 12:00 Midnight
 Sat.: 12:30 pm - 12:00 Midnight • Sun.: 2:00 pm - 11:00 pm

Pine Brook Inn

Lower Demunds Road, Dallas, PA 18612
 "Just Off The Beaten Path"



Pine Brook Inn will feature a different fish or seafood special each Wednesday during Lent.

The special for Ash Wednesday, March 4, will be Sole Duglere.

Come for a quiet dinner and enjoy our country setting. Dining hours are: W/Th. 5-9, Fr./Sat. 5-10, Sun. 2-7

Call 675-3550 for Reservations
 We look forward to serving you!

NORTHEAST PA'S LARGEST BUILDERS HOME SHOW

FRI., MAR. 27
SAT., MAR. 28
SUN., MAR. 29
W-B ICE-A-RAMA

LIMITED BOOTH SPACE STILL AVAILABLE
 PHONE 287-3331 OR 287-2194

Combine your auto and homeowners insurance policies into **ONE**

Comprehensive Coverage
 Competitive Rates
 CNA's Universal Security Policy

Call: **Slocum Insurance Agency, Inc.**
 575 Memorial Hwy.
 Dallas, PA 18612
 675-1167

GIANT LOBSTER TAILS HAVE INVADED!

Join Us Every Thursday for the Biggest, Most Succulent Lobster Tails

1 Pound Lobster Tail **Only \$18.99**

COOPER'S PUBS
 Ship's Pub, Scranton
 Waterfront Pub, Pittston
 4 P.M. Till Midnite
 Thurs. Shrimp 15¢ ea.

A Great Place To Relax, At Prices You Can Afford
 Open 7 Days Lunch 11-3; Dinner 3-12; Sunday 1-9



WATERFRONT
 304 Kennedy Blvd.
 Pittston, PA
 654-6883

THE DOUGH COMPANY

Pizza & Pasta
 Entire Menu Available For Take-outs

Every Monday & Tuesday Special
Spaghetti & Meatballs \$2.99
 Every Wednesday & Thursday Special
Ziti w/Meat & Salad \$3.99

Our Famous White Pizza Available Daily

675-7347

Near 309 - 415 Intersection
 Open Daily 3:00 - 10:00
 Friday & Saturday 'til 11:00

