

Calendar

Calendar items are published free of charge. Generally, items will be published the two weeks prior to the event. To submit material, send it to The Dallas Post, P.O. Box 366, Dallas, PA 18612, or bring it to our office in the 309-415 Plaza in Dallas. Deadline is Friday at 3:00 p.m.

Special Events

STEAMTOWN NATIONAL HISTORIC SITE, Scranton. Visitors invited to ride behind 1926 vintage steam locomotive from 10 a.m.-4 p.m. as part of a tour to view the remains of the historic roundhouse. Park open daily from 9 a.m.-6 p.m., with walking tours of the locomotives and cars leaving, each hour from 9:30 a.m. to 5 p.m. 961-2034. Free. Temporary Visitors Center, 150 S. Washington St., Scranton.

THROUGH MAY 16, EXCEPT DEC. 14-THROUGH JAN. 13, ASTRONOMY SESSIONS, with viewing sessions on clear nights using 8-inch Celestron telescope. Fri. & Sat., 8-10 p.m. Friedman Astronomy Dome, Penn State Wilkes-Barre, Lehman Twp. 675-2171.

40TH ANNUAL PA POETRY SOCIETY CONTEST, Deadline for entry is Jan. 15. Request contest rules by sending a self-addressed, stamped envelope to PPS Contest Chairman, 200-82 Harris Hill Road, Shavertown, 18708.

JAN. 11, CONTRA DANCE, First Presbyterian Church, 97, S. Franklin St., Wilkes-Barre. 7 p.m. Dance admission: \$5.00 adults; \$2.50 children. Caller, Jan Dreshler; music, Tune Unit.

Exhibits

"ANTHRACITE YEARS." Permanent exhibit, from the formation of coal to the finished product. Wyoming Historical and Geological Museum, rear of the Osterhout Free Library, 71 S. Franklin St., Wilkes-Barre. Tues.-Fri., noon-4 p.m.; Sat., 10 a.m.-4 p.m.

"NATIVE AMERICANS IN WYOMING VALLEY AND ANTHRACITE MINING." Wyoming Valley Historical and Geological Museum, 69 S. Frnaklin St., Wilkes-Barre. Tues.-Fri., 10 a.m.-4 p.m.

"REILLY CLASSIC MOTOR CARS MUSEUM". 100 classic and antique automobiles dating from 1901 to the 1970s. 175 Market St., Kingston. Hours: Sat. & Sun., 11 a.m.-5 p.m. \$4.98 for adults, \$2.49 for children. 288-7767.

THROUGH FEB. 23, SELECTED WORKS FROM THE SORDONI ART GALLERY PERMANENT COLLECTION, Wilkes University campus, S. River St., Wilkes-Barre. Works include 19th and 20th century oils, watercolors, prints, drawings and bronze sculpture. Daily noon-5 p.m.; Thurs. until 9 p.m.; Closed Dec. 25, 31, and Jan. 1. 824-4651, ext. 4325.

Nursing Home Insurance
For Folks Age 50-84

Can pay up to \$130 a day.
Policy GR-7A1
Call today for FREE FACTS including costs, exceptions, limitations, and renewal provisions.
(717) 869-1263
TONY GUSHKA
R.D. 1, Box 118A
Laceyville, PA 18623
BANKERS LIFE AND CASUALTY
an company 3562

Cook's PHARMACY

- Computerized Prescription Service
- Russell Stover Candies
- Greeting Cards
- PA Lottery Ticket
- Newspapers
- Magazines

Memorial Highway, Shavertown
675-1191

Music

SINFONIA DE CAMERA YOUTH ORCHESTRA SPRING CONCERT AUDITIONS. Open to all musicians age 7 to 18 years. in Northeastern Pennsylvania. The only requirements for membership are musical ability and interest. 822-4440.

MOZART CLUB OF WILKES-BARRE, seeking new members. Two clubs available: Junior Club welcomes members up to age 17; for those 18 and older, the Senior Club is available. For information, call Senior Mozart Club, 288-1294; for junior membership, 823-2297.

JAN. 17, CHRIS SMITHER, folks and blues singer, 8:30 p.m. Chicory House, Community Room, St. Stephen's Episcopal Church, South Franklin Street, Wilkes-Barre. Doors open 8 p.m. \$6 at door. 675-8843.

KidStuff

WILKES CONSERVATORY CLASSES, Early Childhood Education classes in music and theatre for children, and acting classes for high school students. The Wilkes-Community Conservatory, Wilkes University, Wilkes-Barre. Classes meet Wednesdays or Saturdays, 824-4651 ext. 4425, 1:30-6 p.m.

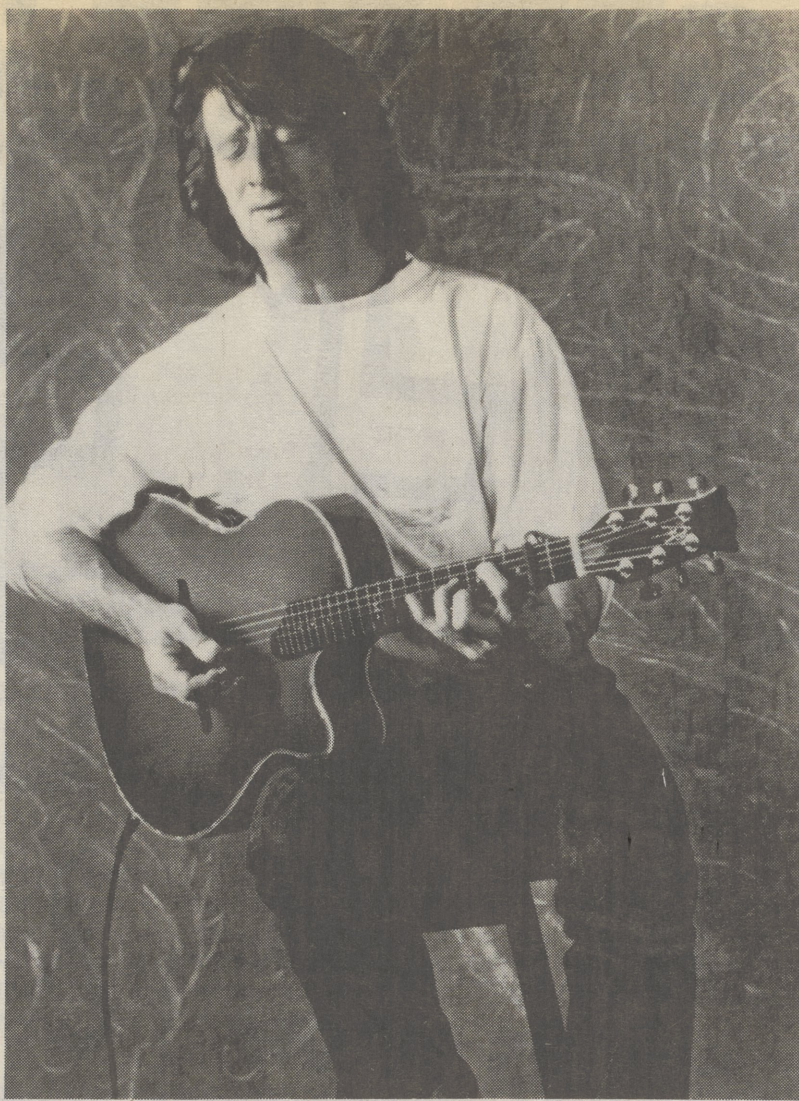
JAN. 10-12; 17-19, "THE FABULOUS FABLE FACTORY," musical. Special school day performance Jan. 17, 10 a.m. and 12:30 p.m. Music Box Dinner Playhouse, 196 Hughes St., Swoyersville. 6 p.m., Fri.; 1 and 5 p.m. Sat., Sun. All seats \$6.50, which includes a McDonald's Fun Meal. 283-2195.

At the Kirby

JAN. 10, "HEIDI", children's show. 6 p.m. Part of 1991/92 Children's Subscription Series. \$7 and \$6. Series tickets are \$35 and \$30. Presented by the Kirby Center.

JAN. 14, "A FUNNY THING HAPPENED ON THE WAY TO THE FORUM," musical. 8 p.m. \$25 and \$22. Presented by the Kirby Center.

JAN. 17, YAKOV SMIRNOFF, Russian born comedian. 8 p.m. \$16.50 in advance and \$17.50 day of show. Presented by the Kirby Center.



CHRIS SMITHER

Chris Smither will unleash his acoustic blues Jan. 17

Chris Smither, blues-rooted singer and songwriter, forced by illness into a last minute cancellation of his November appearance at Wilkes-Barre's Chicory House, will appear at the folk club Friday, Jan. 17.

The nonprofit, volunteer-operated Chicory House, Northeastern Pennsylvania's only venue dedicated to presenting folk music, holds its coffeehouse concerts in the Community Room of St. Stephen's Episcopal Church, South Franklin Street across from Boscov's in downtown Wilkes-Barre. Christ Smither's performance starts at 8:30 p.m. Doors open at 8.

There are no advance sales or reserved seats at the Chicory House-admission and seating are strictly on a first-come, first-served basis, and Chicory House management suggests arriving early to be sure of a seat.

Admission to the concert at the Chicory House will be \$6 at the door. Desserts and beverages will be available for purchase. For fur-

ther information about Chicory House presentations, or to become a Chicory House volunteer, phone 675-8843.

For a long time a legendary cult figure on the folk scene, Chris Smither is a musician finally emerging into national and international prominence. A blues guitar virtuoso, he plays his metallic blue cutaway in an extraordinary style he describes as "one third Lightnin' Hopkins, one third John Hurt and one third me.

Best known as the writer of the Bonnie Raitt's signature tunes "Love You Like a Man" and "I Feel the Same," Chris Smither was born and raised in New Orleans and made his way, in the mid-sixties, to the Charles Street folk clubs of Boston, where he quickly became a favorite.

He shared stage and sessions with the likes of Raitt, Lowell George, Dr. John and Van Morrison, among others. In the 70's he released two albums on the Poppy label, while a third was caught in the machinations of the record business and never released.

Health

JAN. 15, WILKES-BARRE GENERAL HOSPITAL'S PROGRAM FOR WOMEN'S MEDICINE, stress management forum, "Stress-An Essential Part of Life," 7-9 p.m., Thomas P. Saxton Medical Pavilion, Edwardsville. Featured speaker Ann Williams, Ph.D., Dean of Administrative Affairs, LCCC, and stress management specialist. For more information or to register, call 829-8111, ext. 2909.

JAN. 16, DIABETES EDUCATION/SUPPORT GROUP, Community Room, Thomas P. Saxton Medical Pavilion, 468 Northampton St., Edwardsville, 6:30 p.m. Dr. Ron Harris, Endocrinologist discusses diabetes. Free, open to individuals with diabetes, family members and friends. For more information or to register, 829-8111, ext. 2300.

Community

JAN. 8, VVA, CHAPTER 539, Dallas Legion, Route 415, 7 p.m. Vietnam Veterans and all other veterans and interested parties invited.

JAN. 14, ALUMNI SOCIETY OF PENN STATE WILKES-BARRE CAMPUS, regular scheduled board meeting, 6 p.m. Hayfield House room 205 on the campus, Lehman. All interested Penn State Alumni are invited. For more info, or to RSVP call Alumni Office, 675-9158.

JAN. 14, DALLAS U.M. CHURCH WOMEN, meet, 11 a.m. at the church. Refreshments, bring handiwork.

Meetings

TUESDAYS, 7 P.M., BACK MOUNTAIN TOUGHLOVE, Shavertown U.M. Church, 163 N. Pioneer Ave., Shavertown. Toughlove is a self-help program for parents troubled by teenage behavior. For more information, call 675-3616 or 675-0372.

Less is More

A FULL 12 MONTH subscription to The Dallas Post costs only \$16.00. Call 675-5211 to order yours, or use the handy coupon on page 2.

Pine Brook Inn

Lower Demunds Road, Dallas, PA 18612
"Just Off The Beaten Path"



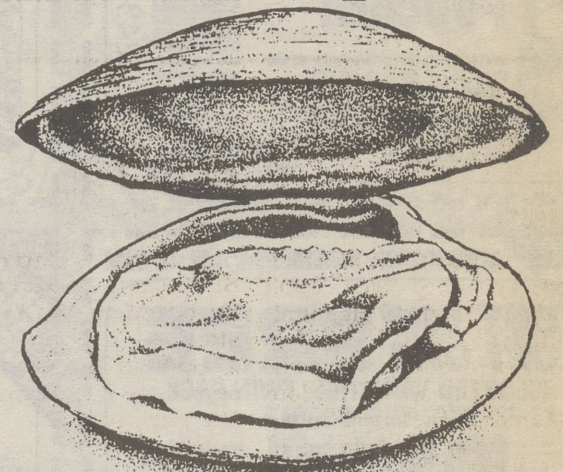
Relax in our comfortable dining room while enjoying "Shrimp Pinebrook" a regular entree, or one of our daily specials may tempt you instead. Reservations are encouraged, but not necessary.

Dining hours: W/Th. 5-9, Fr./Sat. 5-10, Sun. 2-7

Call (717) 675-3550

We look forward to serving you!

Now Open



For delicious seafood at a great net value, it's Cooper's Seafood

Now Open Wide!



WATERFRONT
304 KENNEDY BLVD.
PITTSBURGH, PA 654-6883

OPEN 7 DAYS A WEEK SERVING LUNCH 11-3; DINNER 3-12; SUN. 1 'til 9

Happy New Year! 恭賀新禧

We won't have orchestras for dancing or entertainers to perform for you, but we will have some of the finest Chinese dishes, created by our chefs for this very special occasion.

- Good Fortune Steamed Chicken
- Bountiful Harvest • Princess Beef

Peking Chef

Dallas Shopping Center
675-0555

THE DOUGH COMPANY

Pizza & Pasta
NOW OPEN!

Every Monday & Tuesday Special
Spaghetti & Meatballs **\$2.99**

Every Wednesday & Thursday Special
Ziti w/Meat & Salad **\$3.99**

Our Famous White Pizza Available Daily
675-7347

Near 309 - 415 Intersection
Open Daily 3:00 - 10:00
Friday & Saturday 'til 11:00

\$2.99 Lunch Special

INCLUDES SOUP or SALAD

Monday-Friday 11:00 a.m.-3:00 p.m.

Grotto Pizza Jr "New" Personal Size 8" Pizza 2.99
all toppings available, add .45 each
Lunch Submarine (6" roll) 2.99
any one of our delicious subs
Burger Platter 2.99
includes fries instead of soup or salad
Pasta Special 2.99
Spaghetti, Ravioli, Lasagna, or Gnocchi

Grotto Pizza
the legendary taste

Where Route 415 meets Harveys Lake. 639-1264