

Calendar

Calendar items are published free of charge. Generally, items will be published the two weeks prior to the event. To submit material, send it to The Dallas Post, P.O. Box 366, Dallas, PA 18612, or bring it to our office in the 309-415 Plaza in Dallas. Deadline is Friday at 3:00 p.m.

Special Events

SUNDAYS THROUGH AUGUST, NATHAN DENISON HOUSE, 35 Denison St., Forty Fort. Historic 1790 home of Nathan Denison. Hours: 1-4 p.m. 287-7055 or 288-6784.

STEAMTOWN NATIONAL HISTORIC SITE, Scranton. Visitors invited to ride behind 1926 vintage steam locomotive from 10 a.m.-4 p.m. as part of a tour to view the remains of the historic roundhouse. Park open daily from 9 a.m.-6 p.m., with walking tours of the locomotives and cars leaving, each hour from 9:30 a.m. to 5 p.m. 961-2034. Free. Temporary Visitors Center, 150 S. Washington St., Scranton.

AUG. 24-25, "FAMILY WEEKEND AT SWETLAND" with lawn games, crafts and picnic fare. Swetland Homestead, 885 Wyoming Ave., Wyoming. Admission, adults, \$3; children and groups \$1; and children under 6, free. Also group tours with prior reservations. 822-1727.

AUG. 25, HAYFIELD'S SEVENTH ANNUAL SUMMER FESTIVAL, Penn State Wilkes-Barre Campus, Lehman. 11 a.m.-6 p.m. Featuring crafts, entertainment, refreshments, children's activities, free-style mural paintings, music by "Just Us", a folk/rock band, The Emerald Isle Dancers, magic tricks by Pat Ward and "The Stingray Blues Band." At 3 p.m., performance of "Sojourner," a one-woman play. 675-2171.

THROUGH OCTOBER, LACKAWANNA COAL MINE TOUR, former miner leads visitors wearing hard hats 300 feet underground through the twisting, winding caverns, leading them back in time. Underground tours run from 11 a.m.-4:30 p.m. (until 5:30 on weekends) seven days a week, including holidays. Exit 57-B off Interstate 81. Follow signs to McDade Park, Scranton. Also open weekends in November. Group and senior citizens' rates available. For reservations, 963-MINE or 1-800-238-RAIL.

SEPT. 4-8, LUZERNE COUNTY FAIR, taking applications for exhibitors and for the Fair Queen Contest (16-20) and Fairy Princess Contest (2-5), Sept. 4 to 6. Luzerne County Fairgrounds, Rte. 118, Dallas. Also featured horseshoe pitching tournament, scarecrow-squash contest; Hershey's Cake and Cookie contest, area bands with entertainment. \$3, with free parking and free admission for children under 10. 675-3247.

Exhibits

"ANTHRACITE YEARS." Permanent exhibit, from the formation of coal to the finished product. Wyoming Historical and Geological Museum, rear of the Osterhout Free Library, 71 S. Franklin St., Wilkes-Barre. Tues.-Fri., noon-4 p.m.; Sat., 10 a.m.-4 p.m.

"REILLY CLASSIC MOTOR CARS MUSEUM". 100 classic and antique automobiles dating from 1901 to the 1970s. 175 Market St., Kingston. Hours: Sat. & Sun., 11 a.m.-5 p.m. \$4.98 for adults, \$2.49 for children. 288-7767.

AUG. 23, "THE HUBER COAL BREAKER DOCUMENTATION EXHIBIT," exhibition of measured drawings and photographs, including presentation by Robert Janosov, project historian. Presented by National Park Service, Historic American Engineering Record and "Blue Coal", 7 p.m. Luzerne County Community College Advance Technology Center, Nanticoke. 821-0970 or 822-6085.

THROUGH AUG. 31, BREWING INDUSTRY EXHIBIT. Exhibit of brewing industry in Luzerne and Lackawanna Counties. Wyoming Historical and Geological Society Museum, 69 S. Franklin St., Wilkes-Barre. Featuring photographs, promotional objects, artifacts. Admission free. Tues.-Fri., noon-4 p.m.; Sat., 10 a.m.-4 p.m. 822-1727.

THROUGH SUMMER MONTHS, "GHOST TOWNS OF NORTH MOUNTAIN," an exhibit of lumbering and ice cutting at Ricketts Glen, Mountain Springs and Harveys Lake. Tues.-Fri., noon-4 p.m.; Sat., 10 a.m.-4 p.m. Wyoming Historical and Geological Society Museum, 69 S. Franklin St., behind Osterhout Library, Wilkes-Barre. Free. 822-1727.

Stage

THURS.-SUN., THROUGH SEPT. 8, "YOU KNOW I CAN'T HEAR YOU WHEN THE WATER'S RUNNING," Three comic short one-act plays by Robert Anderson. Part of the Scranton Public Theatre's Pa. Summer Theatre Festival. 8:30 p.m. Montage Ski Resort, Montage Mountain Road, Moosic. Individual tickets \$15. Discounts available for groups of 10 or more, students, and senior citizens. 344-3656 or 344-8847.

AUDITIONS, DIRECTORS, TECHNICAL DIRECTORS, MUSICAL DIRECTORS AND CHOREOGRAPHERS, for 69th season of Little Theatre of Wilkes-Barre. Shows of 1991-92 season include: "The Mystery of Edwin Drood" in Sept.; "Hot L Baltimore", in Nov.; "Crossing Delancey" in March; "The Best Little Whorehouse in Texas" in June. Send letter of intent and resume to: Little Theatre of Wilkes-Barre, PO Box 1, Wilkes-Barre, 18703.

Summer Festival Sunday at Penn State



The 7th Annual Arts at Hayfield Summer Festival is set for Sunday, August 25 at the Penn State campus in Lehman. The open air festival includes crafts, entertainment, children's activities, music by "Just Us," The Emerald Isle Dancers, magic tricks by Pat Ward and "The Stingray Blues Band." There will also be a performance of the one-woman play, "Sojourner," at 3:00 p.m. Festival hours are 11:00 a.m. to 6:00 p.m. Food and refreshments are available. For more information, call 675-2171.



Community

AUG. 21, THE EMBROIDERERS' GUILD OF AMERICA, INC., Wyoming Valley Chapter, "Stitch-in" Picnic, noon to 3 p.m. at Pavilion 3 in Kirby Park. For more information about the Chapter and its activities call: Vicki Kapral, 825-6097; Chris Folmar, 477-2486; Helen Rhode, 256-3595.

AUG. 24, FAMILY STYLE BEEF DINNER, Sweet Valley Volunteer Fire Company fire hall, 5-7 p.m. \$6.50 adults; \$3.25 children ages 6-12. Takeouts available between 4:30-5 p.m. Tickets available from any fireman or at the door.

THROUGH AUGUST, ASTRONOMY SESSIONS, Penn State Wilkes-Barre campus, Lehman. Sessions are open to the public, and are held every clear Friday and Sunday nights from 9 p.m.-11 p.m. Sessions are held at the Freidman astronomy dome, next to the Tech Center. Two eight-inch celestron telescopes are available for use. Free.

AUG. 24, FLEA MARKET 7 CRAFT SALE, Eastern Star Building and Parking Lot, cor. Woodlawn Ave. & Foster St., Dallas. 10 a.m.-4 p.m. Rain date, Aug. 25. Lunch will be served. For reservations Irene Transue, 675-1367.

AUG. 26, THE NEW COMMUNITY SINGERS will begin their fall/winter season, at Mercy Center, Dallas. This rehearsal starts promptly at 7 p.m. Each following Monday rehearsal will run from 7:30-9:30 p.m. All women who enjoy singing 3 or 4 part harmony are invited to join to provide entertainment and pleasure for members and audiences.

Music

SINFORNIA DE CAMERA YOUTH ORCHESTRA SPRING CONCERT AUDITIONS. Open to all musicians age 7 to 18 years. in Northeastern Pennsylvania. The only requirements for membership are musical ability and interest. 822-4440.

AUG. 21, ALAN GAUMER SEY TET, jazz. 8:30 p.m., \$5. Pennsylvania Summer Theatre Festival, Montage. 344-3656.

Stage

AUG. 25, SOJOURNER, one-woman play. Penn State Wilkes-Barre Campus, Lehman Township. Performance by the Germantown Theatre Guild of Philadelphia. 3 p.m. 675-2171.

SEPT. 3, "LOVE LETTERS," stage performance with guest artists. 8:30 p.m. Admission \$10. Pennsylvania Summer Theatre Festival, Montage. 344-3656.

Slocum Park

FRANCES SLOCUM STATE PARK in Carverton, Kingston Township. 696-3525, Jerry Kozlansky, park naturalist.

AUG. 24, MANY MOODS OF NATURE, 8-9:30 p.m. Bill Evans of Greater Wyoming Valley Audubon Society conducts program on many aspects of nature. An excellent collection of slides will be focal point of the presentation. Ages 8 to adult. Meet at amphitheater in the campground.

At the Kirby

AUG. 23, DIANA ROSS, pop singer. 6 and 9:30 p.m. \$50, \$45 and \$28. Presented by the Kirby Center.

AUG. 27, STYX, rock band. 8 p.m., \$23.50 in advance, \$24.50 day of show. Presented by Magic City Productions.

1991/92 CHILDREN'S SUBSCRIPTION SERIES, \$7 and \$6. Series tickets \$35 and \$30. "Rory", Sept. 30; "Columbus", Oct. 25; "Jekyll and Hyde", Dec. 5; "Heidi", Jan. 10; "Sleeping Beauty", Apr. 6. All shows at 6 p.m. Presented by the Kirby Center.

AUG. 28, ROBERT PALMER, rock and soul singer. 8 p.m., \$21.50 in advance, \$22.50 day of the show. Presented by Dancing Cat Productions.

Meetings

AUG. 21, MEET THE TEAM NIGHT, for the 1991 gridiron season, Dallas High School, 6:30 p.m. Parents and friends invited.

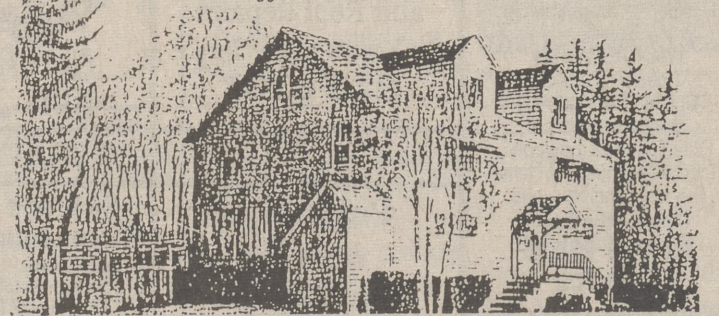
AUG. 27, DALLAS GRIDIRON CLUB, 7:30 p.m., Dallas American Legion, Memorial Hwy., Dallas.

KidStuff

AUG. 24, "WESLEY LANPLIGHTERS" PUPPET SHOW, 10-member touring puppet company from Erie performs for children and adults. 11 a.m. Free Methodist Church, 670 Carverton Road, Trucksville. Free. 696-2535.

Dining on the Deck at Pine Brook Inn

Lower Demunds Road, Dallas, PA 18612
"Just Off The Beaten Path"



Now enjoy dinner and cocktails on the deck overlooking the fountain and ponds.

Call For Reservations (717) 675-3550

HOURS: Wed./Thurs. 5:00 to 9:00 • Fri./Sat. 5:00 to 10:00 • Sun. 2:00 to 7:00
We look forward to serving you!

Calendar items are published free of charge. Generally, items will be published the two weeks prior to the event. To submit material, send it to The Dallas Post, P.O. Box 366, Dallas, PA 18612, or bring it to our office in the 309-415 Plaza in Dallas. Deadline is Friday at 3:00 p.m.

Grotto Pizza
the legendary taste
639-FAST
FOR DELIVERY
HARVEYS LAKE, PA

John & Jan DELI & CATERING
"Catering for any Occasion"
659 Memorial Hwy., Dallas, PA • 675-6139
(Owned & Operated by Jim & Jan Wertman)

***** SPECIAL *****
Try John's Buffalo Wings
Mild • Hot • AfterBurners
15 for \$3.00
with this coupon only

Footpaths and Landscapes
A Design & Build Company

Call Now to plan your Fall Plantings

Temple University Graduate in Landscape Design & Horticulture
Kurt J. Fetterman

675-8733

FOUR SEASONS GOLF CLUB

750 Slocum Avenue, Exeter, PA • 655-8869

★ Open Year Round to the Public ★

18 Hole - Par 72 • 6,202 Yards From Back Tees
Professionally Groomed Greens

Open 7 Days of the Week, Dawn till Dusk

Tee Times on Weekends & Holidays

Men's, Women's & Senior Leagues

Tournaments For Groups or Fundraisers

Pro Shop for Purchases of Golf Accessories

★ GOLF SPECIAL ★

2 GREEN FEES
and a **CART** for 2
\$25.00
only

Mon. & Tues. 11 a.m. - 3 p.m. • Wed. & Thur. before Noon
Friday, Saturday & Sunday after 4

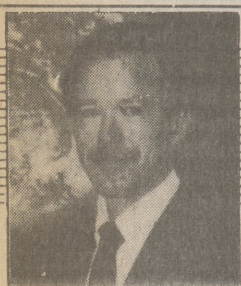
CALL FOR RESERVATIONS • 655-8869

All Brand New Motor Carts
Golf Club Rentals • Pull Cart Rentals
Newly Remodeled Clubhouse
Canvas Covered Patio
overlooking the Golf Course

NEW EXPANDED MENU

Try Our New Huge Hot Roast Beef Sandwich
Friday Night • Happy Hour • 7 - 9

Call us to Plan your Next Event at 655-8869



INSIGHT INTO EYESIGHT

Dr. Curtis Goodwin
Optometrist



POLYCARBONATE LENS PROTECTION

A great boon to sports enthusiasts (and other eyeglass wearers, especially the young, rough-and-tumble set) are the new polycarbonate materials. Back in the 50's and 60's, most lenses were made of glass. Then plastic became popular because it was lighter. However, polycarbonate is even lighter than plastic. As a matter of fact, it is 50% lighter than plastic and 20% thinner for the same correction. That means more comfort and style. In addition, it's a better ultraviolet (UV) protector and provides much greater impact resistance.

For this reason, it is the

preferred lens for people who engage in athletics. Polycarbonate frames are also preferred. If you regularly participate in sports that involve a projectile, such as racquetball, baseball or tennis, ask your optometrist about polycarbonate lenses and frames. Polycarbonate lenses come in clear or any of the multitude of tints available. They're worth the investment.

Dr. Curtis Goodwin
170 N. Memorial Highway
Shavertown, PA 18708
(717) 675-3627