

PEOPLE

Dr. DelGaudio co-authors medical journal article

Walter DelGaudio, M.D., director of the department of anesthesiology at Geisinger Wyoming Valley Medical Center, co-authored an article which was recently published in the "Journal of the University of Rochester Medical Center."

The article about Injection of Morphine of Patients Undergoing Open Heart Surgery, was researched and co-authored by Janine R. Shapiro, M.D., George L. Hicks, M.D. and Diana E. Garneau, M.D.

DelGaudio earned his medical degree from the State University of New York, Downstate Medical Center and his undergraduate degree from Manhattan College. He completed a medical internship and a residency in internal medicine at the Kings County

Hospital, Brooklyn. In addition, he completed a clinical fellowship in pulmonary disease at the Downstate Medical Center, and a residency in anesthesiology at the University of Rochester, Strong Memorial Hospital.

DelGaudio is a Diplomate of the National Board of Medical Examiners, the American Board of Internal Medicine, Subspecialty of Pulmonary Disease with the American Board of Internal Medicine and the American Board of Anesthesiology.

A Fellow of the American College of Chest Physicians and a member of the Society of Critical Care Medicine, DelGaudio resides in Shavertown with his wife, Patricia.



WALTER DELGAUDIO, M.D.

Patton named a director of LCCC Foundation Board

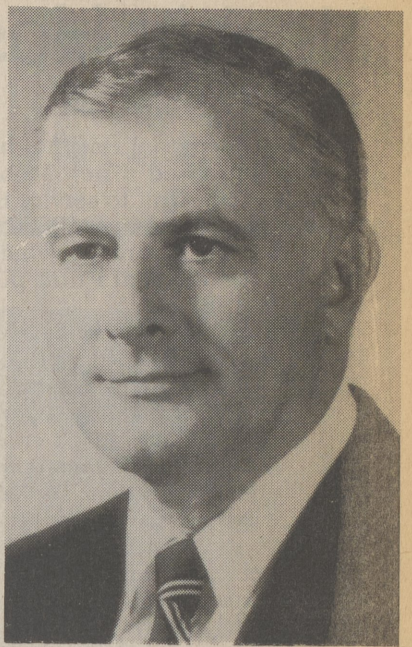
Robert T. Patton, of Dallas, has been named to the Luzerne County Community College Foundation Board of Directors by the LCCC Board of Trustees.

Patton, senior vice president of Merchants Bank, North, is a member of the College's Board of Trustees. He also is a member of the Boards of College Misericordia, Clear Brook Lodge and Manor, and WVIA-TV, where he serves as treasurer.

In addition, Patton is a member of the Business Advisory Board of Keystone Junior College, treasurer of the Economic Development Council of Northeastern Pa., member of the Greater Wilkes-Barre Chamber of Commerce, member of the personnel committee of the Wyoming Valley Chapter American Red Cross, Wyoming Valley Chapter American Institute of Banking, former chairman of

the Luzerne County Human Services Advisory Committee, Luzerne County Law and Library Association, Pennsylvania Bankers Association Legislative Relations Committee, and the American Cancer Society.

Patton is a part-time faculty member and serves on the Business Division Advisory Council of King's College, advisory board member of St. Pius X Seminary and the Diocesan Synod, former member of the Board of Governors Wyoming Valley Country Club, and the membership committee of the Westmoreland Club.



ROBERT T. PATTON

The LCCC Foundation Board of Directors is governed by community leaders who, like Patton, represent a diverse corporate and community interest. As a director, Patton will join others in assisting the Foundation to obtain financial

support, through gifts from the community, as well as manage the business and property of the Foundation.

Patton resides in Dallas with his wife Patrice. They are the parents of seven children.

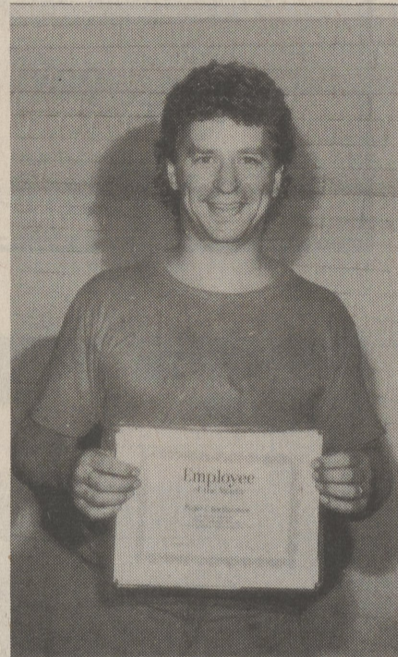
Bartholomew is employee of month at Offset Paperback

Offset Paperback Mfrs., Inc. chose Roger E. Bartholomew as June's Employee of the Month.

Roger began working at OPM on May 17, 1982. He currently is a V.T. Trimmer Operator. He is an exemplary employee, and his ability to maximize and balance quality and productivity coupled with a positive and cooperative attitude are some of his key attributes. In addition, he maintains an excellent attendance record and is known as a "doer", a "helper" not a "watcher".

Prior to OPM, he worked for Harwood Cycle in Hazleton as a mechanic; David Ertley, Inc., Kingston as a parts person; Churveys Garage, Plymouth as a parts person and service writer and for Kirby Distributors as a senior dealer.

As employee of the month, Roger received an Employee-of-the-Month certificate, preferred parking for one month, a dinner for two gift certificate, and a \$50 savings bond.



ROGER E. BARTHOLOMEW

In the service

CPL. NICKIE LONG HAS RETURNED FROM GULF

Marine Cpl. Nickie T. Long, son of Richard and Catherine Long of E. Center Hill Road, Dallas, recently returned from deployment to the Middle East in support of Operation Desert Storm while serving with 1st Marine Division, Camp Pendleton, CA.

Operation Desert Storm was the largest deployment of U.S. military forces since Vietnam. The operation was in response to Iraq's invasion of Kuwait and threat to Saudi Arabia.

The 1987 graduate of Dallas High School joined the Marine Corps in December 1987.

Dr. Congdon promoted at Univ. of Georgia

Dr. Justin D. Congdon, a physiological ecologist has been an associate research ecologist at the Savannah River Ecology Laboratory for five years, recently was promoted to senior research ecologist by the University of Georgia.

SREL is a research unit of UGA under contract with the U.S. Department of Energy to conduct ecological research at the Savannah River Site, a nuclear materials production facility near the Georgia-South Carolina border and Aiken, S.C.

As a senior ecologist at SREL, Dr. Congdon will continue his research on the ecology fish and

reptiles, such as snakes, turtles, lizards and alligators.

"Specific areas of my research include questions such as, 'why do turtles not show the signs of aging characteristic of many other animals?' Our studies have documented that many individual turtles live more than 60 years," Dr. Congdon said.

He has published 46 scientific papers, books or chapters on his research.

In addition to his position at SREL, Dr. Congdon holds adjunct positions at the Museum of Zoology, The University of Michigan, Ann Arbor, Mich.; the Department of Aquaculture, Fisheries and

Wildlife, Clemson University, Clemson, S.C.; and the zoology departments at the University of Georgia, Athens, Ga., and the University of Tennessee, Knoxville, Tenn.

Before becoming an associate research ecologist at SREL in 1985, Dr. Congdon was a post-doctoral scholar at SREL and at the Museum of Zoology at the University of Michigan.

A native of Dallas, Dr. Congdon is a graduate of Victor Valley College and California State Polytechnic University, San Luis Obispo. Dr. Congdon received his doctorate degree from Arizona State University in 1977.

YOU'RE CRAZY... to live with a Wet Basement!

B-DRY SYSTEM
FREE ESTIMATE

BEFORE THE PERMANENT SOLUTION AFTER B-DRY SYSTEMS 824-8808

SUPERIOR INSURANCE FOR AUTO, HOME, BUSINESS AND LIFE AT THE LOWEST POSSIBLE PRICE

JOE MASEYCHIK and Erie Insurance Group provide policyholders with as near perfect protection and service as is humanly possible.

Why not make us prove it!

150 S. River Street, Plains, PA 18705 (717) 829-6648

ERIE INSURANCE GROUP
ERIE INSURANCE EXCHANGE
ERIE FAMILY LIFE INSURANCE COMPANY
ERIE INSURANCE COMPANY
HOME OFFICE ERIE, PA. 16530

Suits... more than suitable.

Not only do we get your suit really clean, we'll reshape it, remove spots and stains, and make sure the linings are wrinkle-free, lapels softly rolled and pressed to perfection. There is a difference in the best care...and we can prove it!

Town & Country Cleaners
Country Club Shopping Ctr. • 675-0468

IFI A member of the International Fabricare Institute, the association of professional drycleaners and laundries.

ALL PANTYHOSE HALF PRICE

ACME 1891 100th ANNIVERSARY 1991

ECONO BUY ALL SHEER PANTYHOSE 2 PAIR

FASHION COLOR

SHEER & SILKY Luxuriously Sheer and Silky Pantyhose

No nonsense® SHEER & SILKY

72 HOUR SALE! THURS., FRI., SAT. Aug. 15, 16 & 17

WHILE SUPPLIES LAST • NO RAIN CHECKS • CHECKER WILL CHARGE 1/2 OFF THE REGULAR PRICE

Prices effective August 15, 16, 17, 1991 in Luzerne, Lackawanna, Lycoming and Schuylkill counties. In New Jersey: N. Plainfield, Middlesex, Pompton Lakes, Union, Leonia, Jersey City, Parsippany, Port Reading, Edison, Morris Plains, Plainfield, Bridgewater, Teaneck, Washington, Newton, Secaucus, Sparta, E. Rutherford, Springfield, Edison Twp., Elizabeth, Montclair, Clifton, Lincroft, Point Pleasant, New Providence, Belmar, Manasquan, Ocean, Englishtown, Shrewsbury, Succasunna, Lodi, Rockaway, In New York: 280 Marsh Ave., Staten Island. (None sold to other retailers or wholesalers. Quantity rights reserved.) Not responsible for typographical errors. **IN AD COUPONS ARE NOT DOUBLED**