

Calendar

Calendar items are published free of charge. Generally, items will be published the two weeks prior to the event. To submit material, send it to The Dallas Post, P.O. Box 366, Dallas, PA 18612, or bring it to our office in the 309-415 Plaza in Dallas. Deadline is Friday at 3:00 p.m.

Exhibits

"150 YEARS OF PHOTOGRAPHY IN THE WYOMING VALLEY." Wyoming Historical and Geological Society, 69 S. Franklin St., Wilkes-Barre. Ongoing exhibit. For info, call 823-6244.

"ANTHRACITE YEARS." Permanent exhibit, from the formation of coal to the finished product. Wyoming Historical and Geological Museum, rear of the Osterhout Free Library, 71 S. Franklin St., Wilkes-Barre. Tues.-Fri., noon-4 p.m.; Sat., 10 a.m.-4 p.m.

"REILLY CLASSIC MOTORCARS MUSEUM". 100 classic and antique automobiles dating from 1901 to the 1970s. 175 Market St., Kingston. Hours: Sat. & Sun., 11 a.m.-5 p.m. \$4.98 for adults, \$2.49 for children. 288-7767.

THROUGH AUG. 4, "RECENT PAINTINGS" of abstract expressionistic works by New York City artist Ellest Frank. MacDonald Art Gallery, College Misericordia, Dallas.

THROUGH AUG. 31, BREWING INDUSTRY EXHIBIT. Exhibit of brewing industry in Luzerne and Lackawanna Counties. Wyoming Historical and Geological Society Museum, 69 S. Franklin St., Wilkes-Barre. Featuring photographs, promotional objects, artifacts. Admission free. Tues.-Fri., noon-4 p.m.; Sat., 10 a.m.-4 p.m. 822-1727.

THROUGH SUMMER MONTHS, "GHOST TOWNS OF NORTH MOUNTAIN," an exhibit of lumbering and ice cutting at Ricketts Glen, Mountain Springs and Harveys Lake. Tues.-Fri., noon-4 p.m.; Sat., 10 a.m.-4 p.m. Wyoming Historical and Geological Society Museum, 69 S. Franklin St., behind Osterhout Library, Wilkes-Barre. Free. 822-1727.

KidStuff

THROUGH AUGUST 11, ENCORE MUSIC CAMP OF PENNSYLVANIA REGISTRATIONS, open to music students and features vocal, instrumental, orchestral and musical theater opportunities. Wilkes University, Wilkes-Barre, 824-4651, ext. 4426.

Special Events

SUNDAYS THROUGH AUGUST, NATHAN DENISON HOUSE, 35 Denison St., Forty Fort. Historic 1790 home of Nathan Denison. Hours: 1-4 p.m. 287-7055 or 288-6784.

THROUGH AUG. 4, LAVENDER, OLD LACE AND YESTERYEARS," a musical living history. Sweetland Homestead, 885 Wyoming Ave., Wyoming. Recreation featuring a professional cast, historically accurate script, authentic costuming, music and dance and heritage recipes. Every Sat. & Sun., 10 a.m.-4 p.m. hourly. 823-6244.

AUG. 10, AUCTION AND FLEA MARKET, with tours available daily with prior reservations. Sweetland Homestead, 885 Wyoming Ave., Womig. Admission: Adults \$3; children and groups \$1, and children under six years, free. 823-6244 and 822-1727.

AUG. 24, FLEA MARKET & CRAFT SALE, Eastern Star Building and Parking Lot, cor. Woodlawn Ave. & Foster St., Dallas. 10 a.m.-4 p.m. Rain date, Aug. 25. Lunch will be served. For reservations Irene Transue, 675-1367.

SEPT. 4-8, LUZERNE COUNTY FAIR, taking applications for exhibitors and for the Fair Queen Contest (16-20) and Fairy Princess Contest (2-5), Sept. 4 to 6. Luzerne County Fairgrounds, Rte. 118, Dallas. Also featured horseshoe pitching tournament, scarecrow-squash contest; Hersey's Cake and Cookie contest, area bands with entertainment. \$3, with free parking and free admission for children under 10. 675-3247.

At the Kirby

AUGUST 1, DEBBIE GIBSON, pop singer, 7:30 p.m. \$20.50. Presented by Magic City Productions.

AUGUST 6, AIR SUPPLY, pop band, 8:00 p.m., \$19.50 and \$17.50. Presented by Metro Talent and Magnus Productions.



Back Mountain Bloomers revive Historical Society Garden

Members of the Back Mountain Bloomers garden club, pictured above, are working with the Wyoming Historical and Geological Society to re-plant and refurbish the garden of the Society's Bishop Memorial Library, 49 South Franklin Street, in Wilkes-Barre. The Bloomers have adopted the yard for their annual garden project and have spent many hours planting a wide variety of flowers, some of which were transplanted from their own gardens. Hope Chollock, a member of the Historical Society and of the Back Mountain Bloomers began the project to re-plant the Bishop Library garden last year with the help of Jean Karmiel, also a member of the Bloomers. The Historical Society and the Back Mountain Bloomers will celebrate the rejuvenation of the Bishop Library garden with a garden party, August 15, from 4:30 p.m. to 7 p.m. Admission to the event is \$5.00 per person with proceeds benefitting the Historical Society. Refreshments will be served compliments of the Westmoreland Club. Anyone wishing to contribute to the repair of the fence, donate flowers or benches, or make a reservation for the Garden Party is encouraged to call the Society offices at 823-6244.

Members of the Back Mountain Bloomers garden club at work in the garden of Historical Society Library. Front row, from left, Nancy Mayer, Beth Harkins, Mike DelKanic and Christian Lusciac. Standing, Claudette Banks, Nancy Carey, Nancy Brown, Hope Chollock, Jean Karmiel and Polly Wielage.

Stage

AUG 1-4, 8-11 AND 15-17, 'HOW TO REALLY SUCCEED IN BUSINESS WITHOUT REALLY TRYING', musical. The Music Box Dinner Playhouse, 196 Hughes Street, Swyersville. Doors open at 6 p.m., meal at 6:30 p.m. and curtain at 8 p.m. matinee on Aug. 2. Opening at 1:30 p.m. meal at 2 p.m. and curtain at 3:15 p.m. Tickets \$10, show only; \$20 for children 12 and under (with buffet); \$23.50 for evening shows (with buffet) and \$26 special entree and show. 283-2195.

Stage

THROUGH AUG. 4, "HARVEY", comedy. Followed by evening of three one-act comedies. Scranton Public Theatre's Pa. Summer Theatre Festival. Thurs.-Sun., 8:30 p.m. Montage Ski Resort, Exit 51, off Montage Mountain Road, Moosic. Individual tickets \$15. Season subscription to both shows, \$30. Discounts available for groups of 10 or more, students and senior citizens. 344-3656 or 344-8847.

Community

AUG. 2-3, SHAVERTOWN FIRE CO. LADIES AUXILIARY BAKE SALE AND WHITE ELEPHANT TABLE. Donations being accepted. Articles in good cond. no clothes. Drop articles off at the Fire Hall July 31 and Aug. 1, after 7 p.m. For more info, 675-4514.

Community

AUG. 3, FLEA MARKET, LADIES AUXILIARY OF THE SWEET VALLEY VOL. FIRE CO., at Fire Hall, Main Road, Sweet Valley. Cost per table is \$5.00 and can be reserved by calling Connie Doty, 477-3417 or Alice Walsh, 477-5239. Refreshments will be available.

AUG. 2, 10, 17, 23, 30, MOVIES, TEEN AND FAMILY ENTERTAINMENT, Gifts From Above, Christian Bookstore, Rte. 415, across from Daring's Market, Dallas. Aug. 2, "The Shepherd"; Aug. 10, "All the King's Horses"; Aug. 17, "Twice Given"; Aug. 23, "Stranger in My Forest"; Aug. 30, "The Paradise Trail". Movies begin promptly at 7 p.m. Free admission, all welcome. 675-0354.

AUG. 4, JAMES K. EVANS FAMILY REUNION, 12:30 at Fire Hall in Orange. Bring covered dishes to share in buffet lunch. Following the meeting a study of picture of first reunion held in 1902. There will be games and contests for children.

THROUGH AUGUST, ASTRONOMY SESSIONS, Penn State Wilkes-Barre campus, Lehman. Sessions are open to the public, and are held every clear Friday and Sunday nights from 9 p.m.-11 p.m. Sessions are held at the Friedman astronomy dome, next to the Tech Center. Two eight-inch celestron telescopes are available for use. Free.

AUG. 5, FRANKLIN MILLS OUTLET MALL in Philadelphia. Greater Pittston YMCA, sponsoring this excursion. All welcome. To register call the Greater Pittston YMCA at 655-2255.

AUG. 9, BLOOD COLLECTION, Meadows Nursing Center, 55 W. Center Hill Rd., Dallas. 1-6 p.m. Appts. recommended.

AUG 10, ICE CREAM SOCIAL, Loyalville United Methodist Church from 4:30 p.m.-7 p.m. The church is located on the Loyalville Road, West off Rte. 118 or East off Rte. 29. Wimpies, hot dogs, baked beans, potato salad, pie, coffee and beverages or sale.

Slocum Park

FRANCES SLOCUM STATE PARK in Carverton, Kingston Township. 696-3525, Jerry Kozlansky, park naturalist.

Every Child Deserves a Family

Wiley House SM

Wiley House Foster Parents receive:
• Weekly caseworker support
• Financial compensation • Training
for more information, call: 1-800-551-2238

Pick Your Own Blueberries at **BLUEBERRY HAVEN**

West Auburn, PA
(Just 11 miles from Meshoppen on Route 267 North)

Open

Every Thurs., Fri. & Sat. 8 A.M. - 7 P.M.
Every Sunday 8 A.M. - 5 P.M.

869-1166 (if no answer 865-1574)

The Jersey Shore Restaurant

31 Lake St., Dallas
(Next to Rea & Derick Drugs)
675-5620

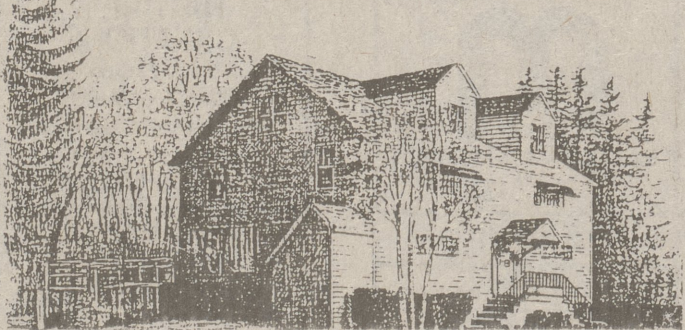
NEW HOURS:

Tuesday thru Saturday
Open for Dinner until 9 p.m.

**Tuesday & Wednesday Special
New York Strip Steak
and Salad Bar \$6.50**

Dining on the Deck at Pine Brook Inn.

Lower Demunds Road, Dallas, PA 18612



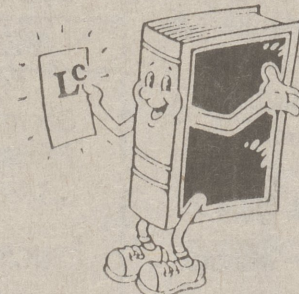
Now enjoy dinner and cocktails on the deck overlooking the fountain and ponds.

Call For Reservations (717) 675-3550

HOURS: Wed./Thurs. 5:00 to 9:00 • Fri./Sat. 5:00 to 10:00 • Sun. 2:00 to 7:00
We look forward to serving you!

College at your convenience!

We've made it easy, with classes in your community!



\$44 per credit hour
(\$4 General Service Fee Per Credit Hour)

Luzerne County Community College announces its Fall 1991 Class Schedule for the

Dallas Area

Class Location: Dallas Area High School
Registration Date: Monday August 12, 1991 6:00 - 8:00 P.M.
Classes Begin: Tuesday, Sept. 3, 1991
Classes End: Thursday, Dec. 12, 1991
Final Exams: Week of Dec. 16, 1991

Course	Title	Time	Day
ACC111	PRIN ACCTG I	6:15-8:45	TUESDAY
ACC112	PRIN ACCTG II	6:15-8:45	WEDNESDAY
BUS125	BEG TYPING	6:15-8:45	WEDNESDAY
BUS202	PRIN MKTG II	6:15-9:00	THURSDAY
BUS 261	BUSINESS LAW I	6:15-9:25	MONDAY
EMS 207 (LF)	FA/CPR	6:15-9:25	MONDAY
ENG 101	ENGLISH COMP I	6:15-8:45	TUESDAY
ENG 102	ENG COMP/LIT II	6:15-8:45	WEDNESDAY
ENG 223	AMERICAN LIT I	6:15-9:00	THURSDAY
IST 209 (D1)	INTR MICROCMPT (LF)	6:15-8:45	TUESDAY
IST 209 (D2)	INTR MICROCMPT (LF)	6:15-8:45	WEDNESDAY
IST 260	INT LOTUS 1-2-3 (LF)	6:15-9:00	THURSDAY
MAT 105	BSC CLG MATH	6:15-9:25	MONDAY
PSY 217	DVLPMTNL PSYCH	6:15-9:25	MONDAY
SOC 216	SOCIAL PROBLEMS	6:15-8:45	TUESDAY

Monday and Thursday classes are extended to make up for time missed. EMS 207 can be used to satisfy a Phys. Ed. requirement. It is one credit. It begins Sept. 9 ends Oct. 7. Final exams will be Oct. 16.



Luzerne County Community College
Nanticoke, PA 18634
(717) 735-8300 • 829-7300 • 459-1600

A Great Place To Start... Or Start Again

Jim & Jan DELI & CATERING

"Catering for any Occasion"
659 Memorial Hwy., Dallas, PA • 675-6139
(Owned & Operated by Jim & Jan Wertman)

Try Our New Boneless Chicken With Mild, Hot, or John's After Burner Sauce if you like Wings without bones this is for you!

★ **GUN** ★
★ AND ★
★ **MILITARY** ★
★ **SHOW AND SALE** ★
★ **August 3rd & 4th** ★
★ **Ho Jo Inn** ★
★ 500 Kidder St., Wilkes-Barre ★
★ Hours: 9:00 - 4:00 Sat. • 9:00 - 3:00 Sun. ★
★ Admission \$4.00 Adults ★
★ \$2.00 Children ★
★ **Buy • Sell • Trade** ★
★ Info: Ed Winn Sr. 457-9473 ★
