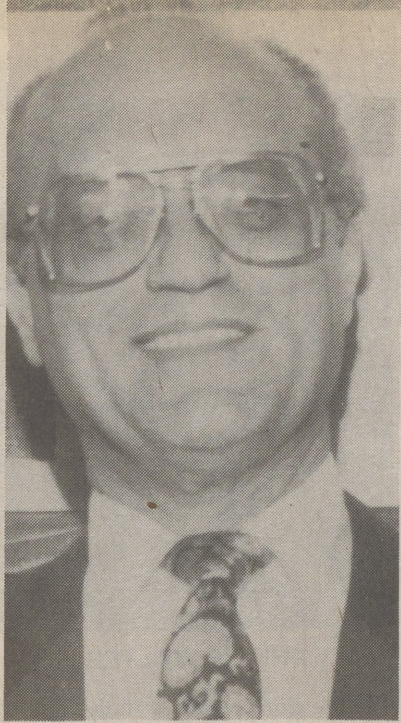


qualified to serve as a Luzerne County Commissioner because I have made the following commitments:

To be a full time County Commissioner; to oppose the creation of another county owned and operated landfill; to provide leadership in post-closure landfill problems and other environmental concerns; to be actively involved in child abuse issues; to maximize citizen input in governmental affairs and provide for opportunities for county residents to interact with all levels of government; and to make certain that this county's limited resources and tax dollars are utilized to their maximum efficiency and effectiveness.

#### Jim McCarthy



JIM MCCARTHY

Wilkes-Barre City Councilman Jim McCarthy announced his candidacy to become a Luzerne County Commissioner as an Independent Democrat. McCarthy, currently serving his first term as a member of Council, has a broad background "inside and outside looking in" politics, he says.

Born in Plymouth, Pa., and raised in the East End section of Wilkes-Barre, Pa. McCarthy left the area in 1957 to pursue a career in broadcast journalism and, for more than two decades, worked in Washington, D.C. with Mutual News and CBS as a correspondent covering the White House and the U.S. Congress, with periodic assignments to the Far East, the Middle East, Africa and Europe.

Since returning "home," Jim McCarthy has been active in local civic and fraternal organizations, including the Lions Club, The Elks, Knights of Columbus, Ancient Order of Hibernians, and currently serves as a vice president of the AFL-CIO's Union Retiree's Organization, the Luzerne County Sports Hall of Fame and the Wyoming Valley Boxing Hall of Fame. He also serves on the Wilkes-Barre Parking Authority, the City Employee's Pension Fund and the Board of Taxation and Review.

McCarthy has been married to the former Patricia Kessler, of Wilkes-Barre, for the past 35 years. They are the parents of four sons, all of whom live and work in the area. The McCarthy's own and operate Jim McCarthy's Tavern on the Hill in the Heights section of Wilkes-Barre.

McCarthy says he is running for County Commissioner to "return government to the people" and pledges to "be a full-time Commissioner, with my hands on the operation of every department in the County, so we can end the abuses of government, such as the over-assessment of select persons properties, the under-taxing of the favored few, the lack of foresight in planning for new jobs and industry so our children won't have to leave the area, and the ridiculous insistence by those in power to build more unnecessary landfills".

#### Jim Nelligan

Jim Nelligan, 62, of Harveys Lake is a Republican candidate for County Commissioner.

He received a B.S. degree in Accounting from King's College.

Nelligan, now retired has had 35 years of federal and state government experience, legislative and executive, as an accountant, auditor, Congressional investigator, manager, Pennsylvania Deputy Secretary of Revenue, Director of the Pennsylvania Governor's Wash-

ington, D.C. office, and Member of the U.S. Congress from Pennsylvania's 11th Congressional District.

#### Jim Phillips

My qualifications and background are as follows:

I was born in 1932 in Forty Fort, PA., and graduated from Forty Fort High School in 1950. In 1954, I received a B.S. degree in Commerce and Finance from Wilkes College. From 1955-1957, I served in the United States Army and then became Vice President of Phillips Seafood Kitchens and Phillips Frozen Food Company in Exeter, PA. Upon the sale of the business in 1976, I formed a food brokerage company, Phil-Son Associates, Forty Fort, PA.

Since 1960, I have been an active participant in Republican politics at a local, state, and national level. In 1980, I served as a delegate to the National Republican Convention, and then served as the Chairman of the Reagan-Bush campaign in Luzerne County. I was elected County Commissioner in 1983, and have served as a full time County Commissioner from 1984 to the present.

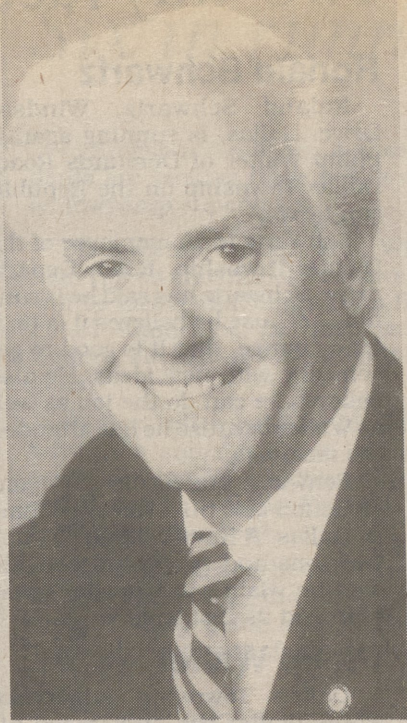
To sum it up, I was born, raised, educated, worked and elected in Luzerne County.

#### Edmund J. Sieminski

Edmund John Sieminski, the son of Stella (Majeski) and Raymond Sieminski, was born on October 20, 1932, in Scranton. He attended grammar and high school in Montrose, Pennsylvania, and graduated from Laurel Hill Academy, Susquehanna, Pennsylvania in June 1950.

He attended Scranton University, majoring in political science and history, where he received a Bachelor of Science Degree, cum laude, in June 1955.

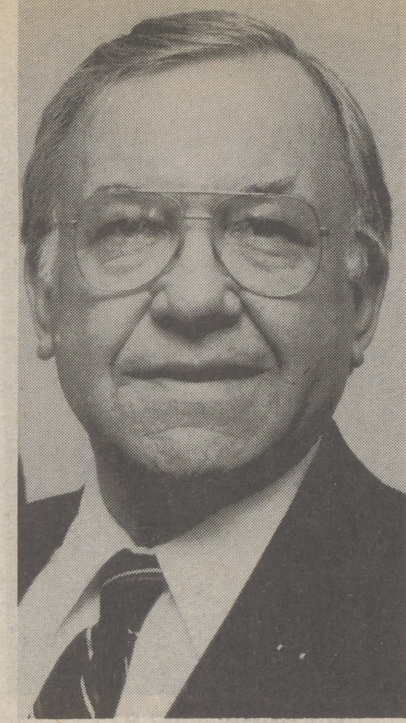
During his twenty-three year military career, he rose to the rank of Lieutenant Colonel, Regular Army and he served in command and staff assignments in the United States, Europe, and the Far East. Command assignments were with the 6th, 8th, 11th and 17th Cavalry Regiments. He has served two tours in Vietnam to include Executive Officer, First Squadron, 11th Armored Cavalry and Senior Advisor to the 2nd Brigade, Vietnamese Airborne Division. He served as Assistant Professor of Military Science at Duquesne



JIM NELLIGAN



JIM PHILLIPS



EDMUND J. SIEMINSKI



ROSE TUCKER

University, Pittsburgh, from 1964 to 1967.

On June 1, 1978, Colonel Sieminski retired from the Army to seek a seat in the General Assembly, Commonwealth of Pennsylvania. First elected in November 1978, and again in 1980, he represented the 136th Legislative District. Representative Sieminski served on State Government, Education and Military and Veterans Affairs Committees. He also represented the Speaker on the State Planning Board and Legislative Office of Research Liaison.

From 1982 to June 1987, Colonel Sieminski served with the Thornburgh Administration first as Legislative Liaison for the Department of Military Affairs; then as Deputy Executive Director/Administration, Pennsylvania Turnpike Commission. In February 1988 he accepted the position of Director of the Small Business Development Center, Wilkes University, Wilkes-Barre, Pennsylvania.

Colonel Sieminski is married to Mary Jane Baily, formerly of Tamaqua, Pennsylvania. Mrs. Sieminski is a graduate of Penn State University and a substitute teacher. They have six children: Kathleen, married to Thomas Shifflet, resides in Alexandria, Virginia; Barbara and John reside in Pittsburgh, Pennsylvania; Mary resides in Lancaster, Pennsylvania, Ed is currently teaching at the English Academy, Lille, France, and Wendy resides and works in the Philadelphia area.

#### Frank Trinisewski

A resident of Wilkes-Barre, Frank J. Trinisewski, Jr. was educated at Marymount High School and Wilkes-Barre Business College. He is self-employed in Real Estate.

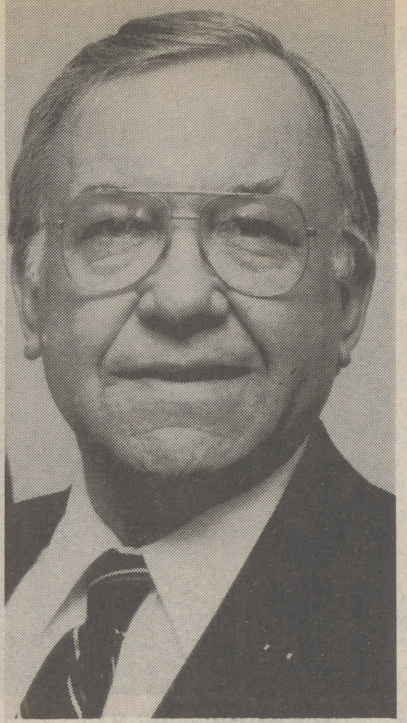
Trinisewski has served 11 years as a Luzerne County Commissioner. He was chairman of the board of commissioners from 1984 to 1989. He also has served on the board of directors of the Wilkes-Barre/Scranton Int'l. Airport and was a Wilkes-Barre City Councilman for 8 years.

Trinisewski is a charter board member of the F.M. Kirby Center for the Performing Arts.

#### Rose Tucker

Rose Tucker, wife, mother, grandmother, resident of Nanticoke, Pa. and Democratic Candidate for Luzerne County Commissioner, has 30 years of experience in Human Services Administration and Business.

Experiences: Executive Director, Tri County Program for Migrants; Executive Director, Luzerne/Wyoming Counties Drug & Alcohol Program; Executive Director, Community Cancer Program; Director, Public Affairs, Maternal and Family Health Services; Owned and operated Travel Agency, Antique Shop and Service Station.



Her present community services are Board, Pa. Cancer Control, Prevention and Research; Chairman, AIDS Awareness Committee; Board, Wyoming Valley Drug & Alcohol Program; Member, NPAA, Hospice St. John Advisory

Board, Commission for Women of Luzerne County, Vestry St. George Church, Nanticoke, American Business Womens Association, Interfaith Resource Center, League of Women Voters and Nanticoke Democratic Womens Club.

### WHERE TO VOTE

#### DALLAS BOROUGH

South District - Back Mountain Memorial Library, Huntsville Road  
North District - Borough Municipal Building, Main Street.

#### DALLAS TOWNSHIP

South District - Side area of Township Municipal Building.  
Middle District - Front area of Township Municipal Building.  
North District - Kunkle Fire Hall.

#### FRANKLIN TOWNSHIP

Orange Methodist Church, Eighth Street.

#### JACKSON TOWNSHIP

Jackson Fire Hall.

#### HARVEYS LAKE BOROUGH

Harveys Lake Borough Municipal Building, Route 415.

#### KINGSTON TOWNSHIP

Northeast District - Grange Hall, Eighth St.  
Northwest District - Shavertown Fire Hall, North Main Street.  
Southwest District - Trucksville Fire Hall in the Township Municipal Building, Carverton Road.

#### LAKE TOWNSHIP

Loyalville United Methodist Church.

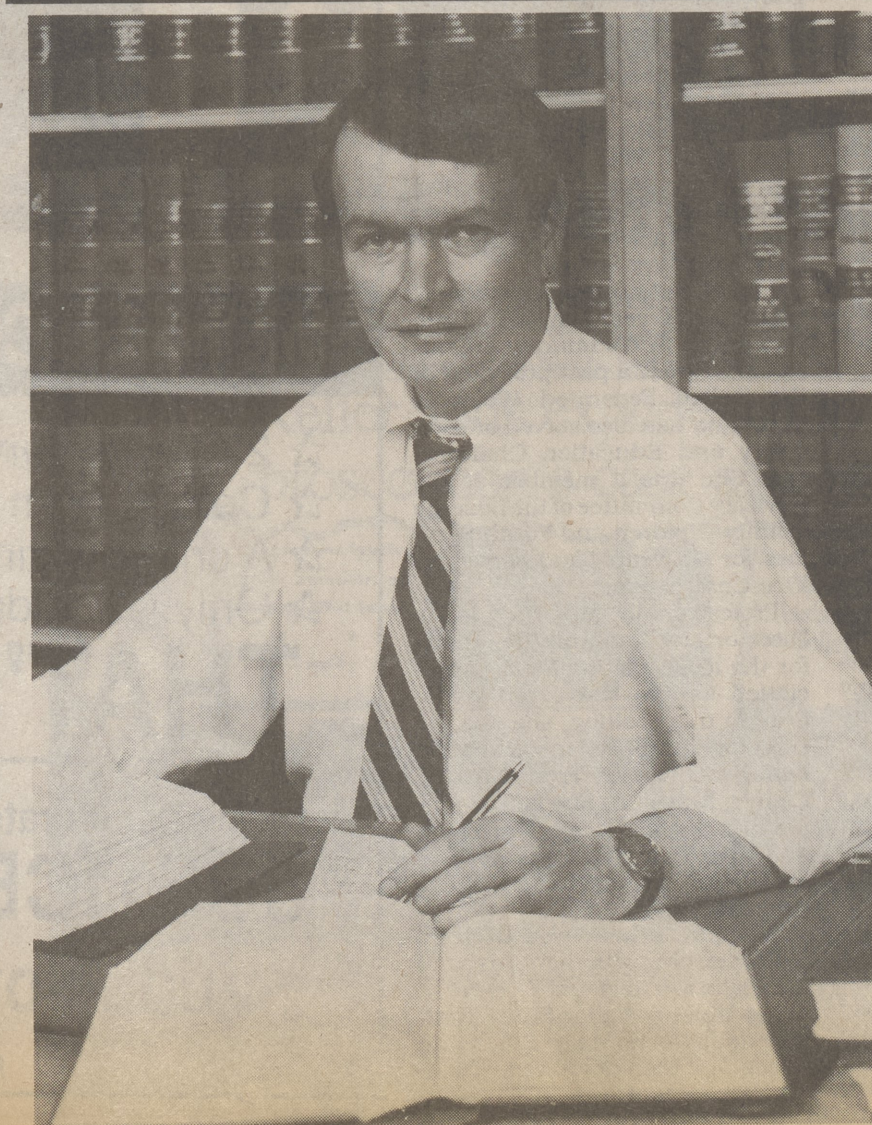
#### LEHMAN TOWNSHIP

Middle District - Lehman Fire Hall.  
Southwest District - Lake Silkworth Fire Hall.  
Northeast District - Idetown Fire Hall.

#### ROSS TOWNSHIP

Sweet Valley Fire Hall.

# ELECTING A JUDGE FOR LUZERNE COUNTY SHOULDN'T BE TRIAL AND ERROR.



With over 23 years of practice before the courts of Luzerne County, Jim Geddes is one of the few candidates that has had extensive civil and criminal trial experience. Attorney Geddes served as law clerk to Judge Richard L. Bigelow of Luzerne County for 7 years and is very familiar with the trial system and judicial process. Jim Geddes is a graduate of Haverford College and Georgetown University Law School. He is also a veteran U.S. Army Reserves criminal investigator.

On May 21st, you can rest assured your vote for Jim Geddes Judge is the right decision for you and Luzerne County, based on his qualifications, ability, experience and integrity.

## ELECT A JUDGE WITH TRIAL EXPERIENCE

# JIM GEDDES

## THE RIGHT DECISION FOR LUZERNE COUNTY.

Paid for by Jim Geddes For Judge Committee - Dr. James Butkofski, Chairman - J. David Roskos, Treas.

### Voters of Dallas Township

# Re-Elect PHIL WALTER

for  
Dallas Township  
Supervisor

★ ★ ★ ★ ★  
REPUBLICANS - DEMOCRATS  
VOTE  
THOMAS WILLIAMS  
FOR  
REGION II  
LAKE LEHMAN SCHOOL BOARD  
PAID FOR BY TOM WILLIAMS  
★ ★ ★ ★ ★