

MEATS

Shur Save

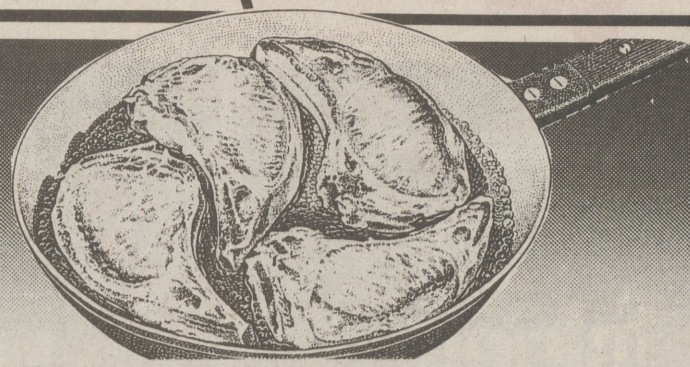


(Perdue...59¢ Lb.)

Fancy Grade A,
Quartered Frying

**Chicken
Legs**

49¢
Lb.



(Quick Fry...2.19 Lb.)

Corn Fed Tender, or Roast

**Center Cut
Pork Chops**

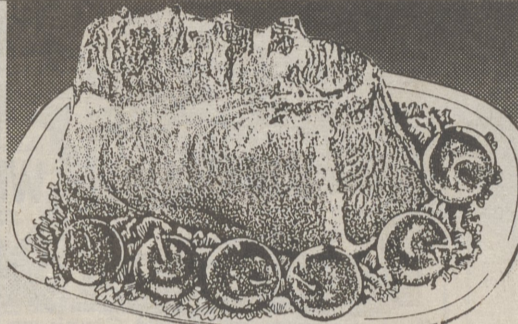
1.99
Lb.



Meaty

**Country Style
Spare Ribs**

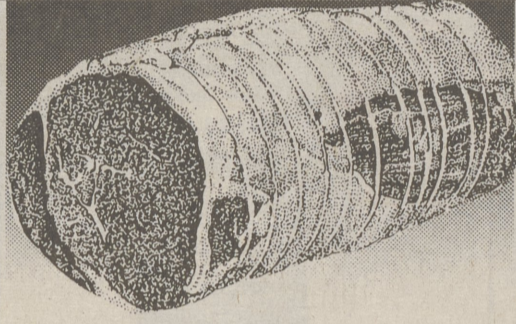
1.79
Lb.



3 Lb. Avg.

**Pork Loin
Roast**

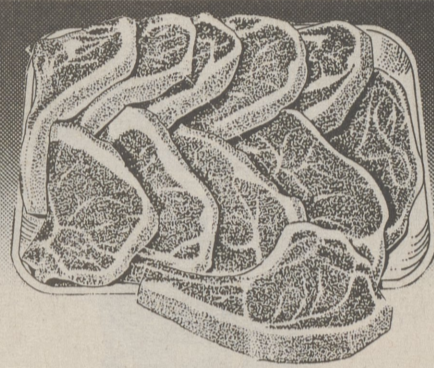
1.79
Lb.



Chefs Prime (Prime Rib of Pork) Bnls.
Pork Loin Roast or
Specially Seasoned

**Oven Ready
Loin Porketta**

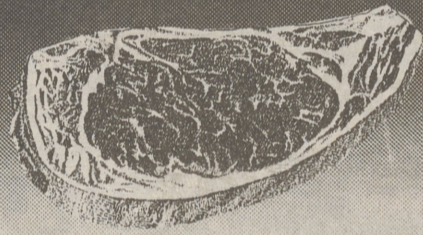
2.99
Lb.



9 to 11 Chops, Sliced

**Quartered
Pork Loin**

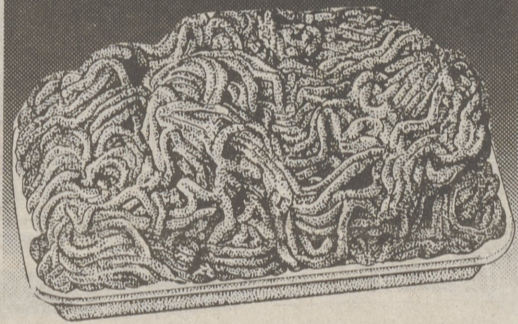
1.79
Lb.



America's Cut or

**Boneless
Pork Chops**

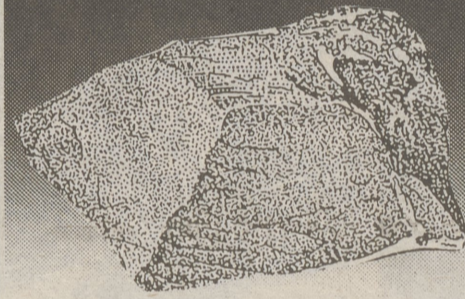
3.99
Lb.



Store Made

**Country Style
Sausage**

1.69
Lb.



Boneless

**Top Round
Roast**

2.59
Lb.



Boneless Top Round Steak **\$2.79** Lb.
Boneless

**Top Round
London Broil**

2.69
Lb.



5 Lb. Bag

**Tyson
Wing Flings**

5.99



32-oz., Quaker Maid

**Sandwich
Steaks**

3.99



Plump & Tender
Frozen (4 to 7 Lb. Avg.)

**Turkey
Breast**

1.39
Lb.



1 Lb. Pkg.

**Hatfield
Sliced Bacon**

1.99



Fresh Frozen
Cello-Wrapped

**Cod
Fillets**

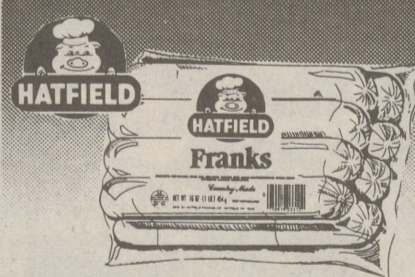
3.99
Lb.



Extra Lean

**Sirloin
Patties**

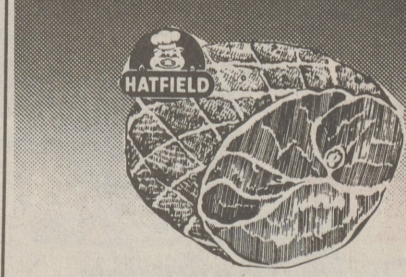
2.19
Lb.



1 Lb. Pkg. Reg or Low Salt

**Hatfield
Meat Franks**

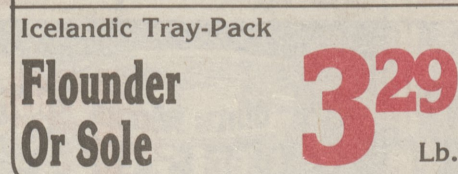
1.59



Whole or Half, Water Added
Hatfield Country Style

**Boneless
Ham**

2.99
Lb.



Icelandic Tray-Pack

**Flounder
Or Sole**

3.29
Lb.



On Cor Breaded

**Pork or
Veal Patties**

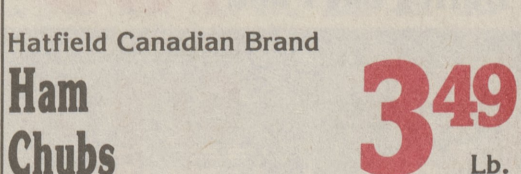
2.69
Lb.



2 Lb. Bag

**Hatfield
Sauerkraut**

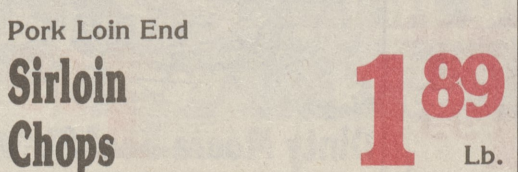
79¢



Hatfield Canadian Brand

**Ham
Chubs**

3.49
Lb.



Pork Loin End

**Sirloin
Chops**

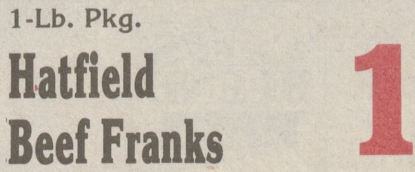
1.89
Lb.



2 1/2-oz. Sliced

**Carl Budding
Cold Cuts**

79¢



1-Lb. Pkg.

**Hatfield
Beef Franks**

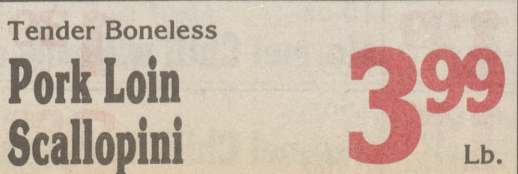
1.79



1 Lb. Pkg.

**Hatfield
Scrapple**

99¢



Tender Boneless

**Pork Loin
Scallopini**

3.99
Lb.

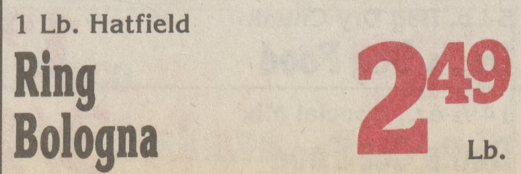


1 Lb.

HATFIELD

Hatfield Pork Roll

1.89



1 Lb. Hatfield

**Ring
Bologna**

2.49
Lb.