

Calendar

Calendar items are published free of charge. Generally, items will be published the two weeks prior to the event. To submit material, send it to The Dallas Post, P.O. Box 366, Dallas, PA 18612, or bring it to our office in the 309-415 Plaza in Dallas. Deadline is Friday at 3:00 p.m.

Community

BINGO Thursday November 8, 1990 from 7:30 to 10 p.m., free refreshments, door prizes. Shavertown Fire Hall.

LEHMAN VOLUNTEER FIRE CO. LADIES AUXILIARY CHRISTMAS BOUTIQUE, Saturday, Nov. 10 from 9-3 at the Lehman Fire Hall. There will be a variety of handcrafted items to choose from. Refreshments will be served and a bake sale is also planned. There will be a door prize chosen every hour. Bring your cameras! Santa will also be there. Table rentals are still available. Phone 675-5667 or 675-4546.

THE NORTHMORELAND TOWNSHIP VOLUNTEER FIRE COMPANY CHRISTMAS AUCTION, Nov. 10, starting at 7 p.m. This auction will consist of all new merchandise. Refreshments will be available. To get to Centermoreland, take Route 292. From Dallas take Upper or Lower Demunds Road. Guy Peters, chairman, invites the public. James Gilpin is president and Delbert Jenkins is fire chief.

ROAST BEEF SUPPER, Nov. 10, St. Paul's Lutheran Church, Shavertown. Serving, 4:30-7 p.m. Takeouts begin at 4 p.m. \$5.50 adults, \$2.50 child. Tickets at the door or call 675-3859, 675-1006.

HOLIDAY CRAFT SHOW & SALE, Bloomingdale Grange Hall, Saturday, Nov. 10, 9 a.m. to 6 p.m. and Sunday Nov. 11, 1 p.m. to 6 p.m. Free parking, free admission. Santa arrives Sunday. Food available both days. Sunday Turkey Platter \$3.50, children up to 10 years \$2.00.

GIFTS FROM ABOVE CHRISTIAN BOOKSTORE in Dallas will sponsor the film series "Turn Your Heart Toward Home" by James Dobson. Friday evenings through November 9 at 7:00 p.m. in the conference room, North Memorial Highway, Dallas, Pa. (across from Daring's Market and behind the Klein Chiropractic center). No charge. All are welcome. Bring a friend. For more information 675-0354.

Exhibits

HOLIDAY ART COMPETITION, through Nov. 25. The Gallery at the Hefft House, 104 E. Overbrook Ave., Shavertown. Tues., Wed., Fri., Sat. 10-5; Thurs. 10-8; Sun. 1-4. 675-4821.

JEAN ELLIOT FADER, illustrator, exhibits paintings and prints. Through mid-November. Lobby, United Penn Bank, 15 Main Street Dallas. Open: Monday through Wednesday, from 9 a.m. to 3 p.m.; Thursday, from 9 a.m. to 5 p.m. and Friday, from 9 a.m. to 6 p.m. 675-5094 or 675-1177.

SORDONI ART GALLERY'S FACILITY BIENNIAL SHOW. Wilkes art facility exhibit artwork, through Nov. 25. The Sordoni Art Gallery, Wilkes University. Featured work includes Jean Adams, ceramics; Sharon Bowar, prints; Mark Cohen, photography; Richard Fuller, fabric; Herbert Simon, sculpture; Michael Stanford, graphics; William Sterling, painting. Gallery hours: daily from noon until 5 p.m.; Thurs., evening until 9 p.m. 824-4651, ext. 4325.

"150 YEARS OF PHOTOGRAPHY IN THE WYOMING VALLEY." Wyoming Historical and Geological Society, 69 S. Franklin St., Wilkes-Barre. Ongoing exhibit. For info, call 823-6244.

"ANTRACITE YEARS." Permanent exhibit, from the formation of coal to the finished product. Wyoming Historical and Geological Museum, rear of the Osterhout Free Library, 71 S. Franklin St., Wilkes-Barre. Tues.-Fri., noon-4 p.m.; Sat., 10 a.m.-4 p.m.

Stage

"BRIGHTON BEACH MEMOIRS," play. Nov. 9, 10, 11, 16 and 17 at 8 p.m. Little Theatre of Wilkes-Barre, 537 N. Main St., Wilkes-Barre. For tickets, call the box office at 823-1875.

"THE LION IN WINTER," comedy. Showcase Arena Theatre, 54 Tunkhannock Ave., Exeter. Nov. 9-11, and Nov. 16-18. Special rates available for groups of 20 or more and season tickets are offered. 654-2555.

Thomas Fallon will be concert soloist

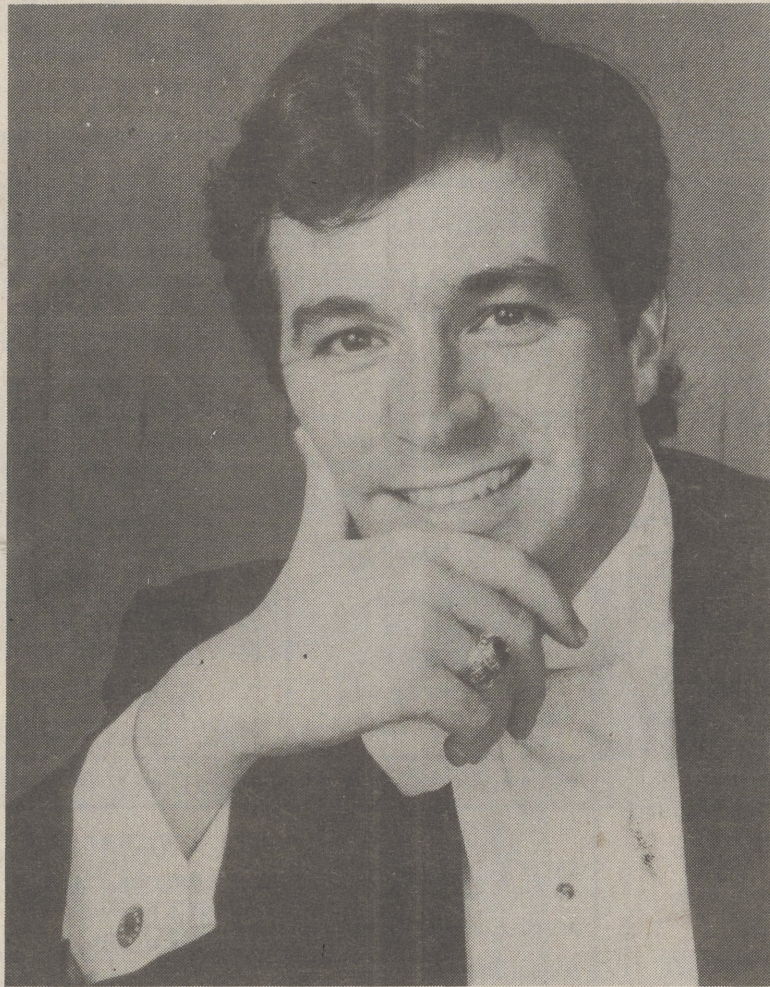
Thomas Fallon will be the featured soloist in this seasons concert by the Wyoming Valley Oratorio Society. The chorus, under the direction of Dr. Stephen Barton, will present a program of music titled "Classic B's" on Sunday, November 18 at 3:00 P.M. in Saint Stephen's Episcopal Church located on South Franklin Street, Wilkes-Barre. Tickets can be purchased at the door, from chorus members or by calling 675-8710.

The chorus, accompanied by an orchestra, will sing the Cantata No. 4 by Bach, Alto Rhapsody by Brahms, Four Songs by Brahms and Mass in C by Beethoven. Other soloists appearing with the group will be Harriet Santos, Jennifer Nolan-Mihalick, John Shackleford, Francis McMullen and Glenn Miller.

Thomas Mark Fallon, Countertenor, is an active vocal soloist performing throughout our country and world in opera, oratorio and recital. A native of Scranton, Mr. Fallon began his vocal studies and career as a boy soprano at the age of ten.

The 1976 recipient of the F. Lamont Belin Arts Scholarship, he was the first countertenor ever to attend the Eastman School of Music.

The return of Mr. Fallon to Wilkes-Barre recalls his past performances here in works of Bach, Purcell and Handel.



THOMAS FALLON

Clubs/groups

SHAVERTOWN FIRE CO. LADIES AUXILIARY, Meeting Monday, Nov. 12, 1990 at 7:30 p.m. at the Fire Hall. New members welcome.

JUSTICE FOR ANIMALS, INC. P.O. Box 1737, Shavertown, PA 18708 will meet Monday, November 12, 7:00 p.m. at the Hoyt Library, Kingston in the Community Room. Final plans for the Fur Free Friday Trip to New York City, November 23, and the Christmas party, December 7, will be discussed. Those concerned with the welfare of animals are encouraged to attend.

LUZERNE COUNTY MOTHERS' OF TWINS AND TRIPLETS Club will hold its monthly meeting on Monday, Nov. 12 at 8:00 p.m. Meetings are held at St. John's Lutheran Church, corner of River and Academy Streets, Wilkes-Barre.

ALUMNI CONSTITUENT SOCIETY OF PENN-STATE Wilkes-Barre will be holding their bi-monthly board meeting on Tuesday, November 13 at 6 p.m. at the campus. Any interested alumni are encouraged to attend. For more information, call the Alumni Office at 675-9158.

BACK MOUNTAIN TOUGHLOVE, Tuesdays, 7 p.m., Shavertown U.M. Church, 163 N. Pioneer Ave., Shavertown. Toughlove is a self-help program for parents troubled by teenage behavior. For more information, call 675-3616 or 675-0372.

Health

THE LUPUS FOUNDATION of America's Northeast Pennsylvania Chapter will hold a Support Group meeting in Monday Nov. 19, 1990 at 7:30 p.m. in the Community Medical Center's Conference Room, first floor. All Lupus patients and concerned others are invited. You can call SHINWE for further information at 967-1234.

NESBITT MEMORIAL HOSPITAL'S CANCER SUPPORT GROUP will hold its November meetings on Wednesday, November 7 and Wednesday, November 21 at 7 p.m. in the Medical Arts Building (Poplar Street entrance), 534 Wyoming Avenue, Kingston.

All cancer patients, their families, and their care providers are welcome to attend this complimentary educational experience.

For more information, please call Mrs. Judith M. Nowak at 288-1411, extension 4024.

Special Events

CONTEMPORARY IRISH POETRY, Dr. Patrick Crotty, Irish professor discusses contemporary Irish themes, their relationship to modern American poetry and the influence of Catholicism of those themes, including James Joyce, William Butler Yeats and living poets such as Seamus Heaney. Wed., Nov. 7, Hafey-McCormick Science Hall, College Misericordia, Dallas. Free admission. 674-6372.

CHRISTMAS CRAFT BOUTIQUE, by Arts at Hayfield, Sun., Nov. 11, 11 a.m. Hayfield House, Penn State Wilkes-Barre Campus, Lehman Twp., 675-9240.

ALUMNI SOCIETY MEETING, Tues., Nov. 13, 6 p.m. Room 205, Hayfield House, Penn State Wilkes-Barre Campus, Lehman Twp., 675-9240.

At the Kirby

CHILDREN'S THEATRE SERIES, stage shows. Single tickets on sale, \$6.50 and \$5.50. Series subscriptions are \$30 and \$25. "Footprints On The Moon," Dec. 11; "Harold and The Purple Crayon," Jan. 14; Eric Nagler, performer/musician from "The Elephant Show," March 19 and "The Incredible Merlin Magic Show, April 30. Shows at 6 p.m. are open to the public. Shows at 10 a.m. are open only to school groups of 20 or more at \$3.50 per person. For more info or reservations, call 823-4599.

"JOAN RIVERS, talk show host/comedian. Sat., Nov. 10, 8 p.m. \$25. Presented by the Kirby Center.

WYNTON MARSALIS, jazz musician with band. Tuesday, Nov. 13 at 8 p.m. \$16. Presented by Skarratt Productions.

EDGAR WINTER and RICK DER-RINGER, rock musicians. With Strawberry Jam. Wednesday Nov. 14 at 8 p.m. \$16. Presented by Metro Talent.

Music

ITZHAK PERLMAN, violinist in concert with Samuel Sanders, Wednesday, Nov. 7, at 7:30 p.m. Masonic Temple, Scranton. Ticket \$25.50 or \$37.50. Available through Masonic Temple Box Office. 344-5252.

THE WILKES UNIVERSITY PERCUSSION ENSEMBLE, present first on-campus concert of the season. Fri., Nov. 23, 8:15 p.m. Dorothy Dickson Darte Center for the Performing Arts, Wilkes University, Wilkes-Barre. Presented by the Dept. of Music, Theater and Dance at Wilkes. Free admission. 824-4651, ext. 4420.

ORRTANNA MOUNTAIN STEAMERS, old-time music. The Chicory House, St. Stephen's Episcopal Church, S. Franklin St., Wilkes-Barre, Fri., Nov. 9, 8 p.m. \$6 admission.

Shuttle Bug Weaving

Custom Designs by Deborah Karr Vaida

Placemats & Table Runners • Scarves • Table Cloths • Shawls • Rugs • Capes • Bedspreads • Jackets & Coats • Curtains
Women's Suits • Tapestries • Weaving Lessons
Order Your Christmas Placemats & Table Runners Now!
Open: Weekdays 10 - 2 • Saturdays 1 - 4
185 North Main St., Shavertown
Call for personal appointment 675-0993

"Managers Carryout Special"

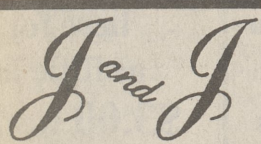
Medium pizza with a topping of your choice for only

\$4.99



And to avoid standing in line use our Drive Thru Window

Hurry in, this is a limited time offer!
Call Ahead - 675-1808



DELI & CATERING

"Catering for any Occasion"

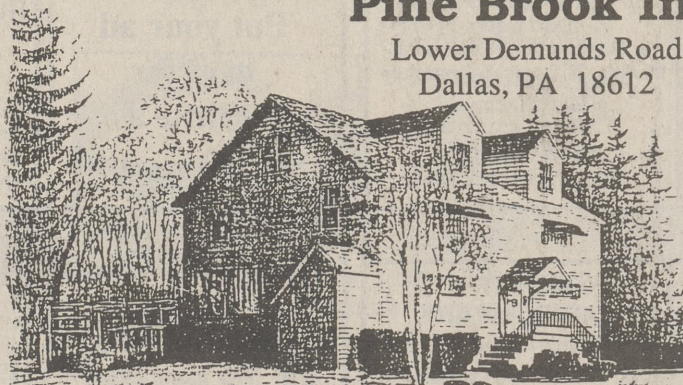
639 Memorial Hwy., Dallas, PA • 675-6139
(Owned & Operated by Jim & Jan Wertman)

For Holiday Gift Giving

Try Our Homemade Chocolate Chip Cookies Topped With Hershey Kisses
• Assorted Turnovers, Pies, Eclairs, Cheesecakes, Neapolitans, and more
• Stopay Peanut Butter Chiffon
• Stopay Assorted Chocolates
• Stopay Creams & Non-Pareils

Pine Brook Inn

Lower Demunds Road
Dallas, PA 18612



Now Open

We have a variety of entrees from fish or seafood to veal, chicken, or beef as well as daily specials.
Come for dinner and cocktails and enjoy the picturesque setting. Reservations are encouraged.

HOURS: Wed./Thurs. 5:00 to 9:00 • Fri./Sat. 5:00 to 10:00 • Sun. 2:00 to 7:00

Now Accepting Reservations for Thanksgiving Dinner 12:00 - 4:00
Phone (717) 675-3550

We look forward to seeing you soon!

'The Restaurant' At



Gas & Food Mart

Corner of Rt. 118 & Rt. 415, Dallas
(Across From Merchants Bank)

Wed. - Spaghetti, Meatballs, Salad & Garlic Bread	\$3.99
Thurs. - Meatloaf, Gravy, Potato & Vegetable	\$3.69
Fri. - Lasagna, Salad, Bread Sticks	\$4.49
- Baked Fish in Lemon Butter, Potato & Vegetable	\$3.69
Sat. - Hot Open Face Turkey, Potato, Cole Slaw	\$3.29
Sun. - Hot Open Face Roast Beef, Potato, Cole Slaw	\$3.29
Mon. - Swiss Steak, Potato & Vegetable	\$3.99
Tues. - Beef Stew over Noodles & Salad	\$3.99

Deli Specials

American Cheese	\$2.89 lb.	Provolone Cheese	\$2.99 lb.
Oscar Meyer Bologna	\$3.09 lb.	Chopped Ham	\$2.69 lb.
Chicken Roll	\$3.09 lb.	Hatfield Cooked Ham	\$3.39 lb.

STORE HOURS: Mon. thru Fri. 6:30 A.M.-11:30 P.M.

Sat. 7 A.M. - 11:30 P.M. • Sun. 8 A.M. - 11:30 P.M.

RESTAURANT: Full Menu Everyday 'til 7 P.M. • Deli Sandwiches & Desserts After 7 P.M.



Diesel, Kerosene, Unleaded, Plus & Premium

The Castle Inn

Now Under New Ownership
Prop. John & Barbara Tarantino
Featuring:

Weekend Specialties

1/2 lb. Lobster Tail - \$9.95

The Chef's Special - Bee Hive Chicken Breast - \$7.95

Roast Duck A L'Orange - \$10.95

Homemade Desserts and Happy Hour At Our Bar 5 - 7

Now Accepting Thanksgiving Reservations

Phone 675-0804

Bring in this ad any weekday and save

10% off all dinner entrees

Open 5 - 10 Tues. - Sat.

Catering from intimate parties to large affairs

Pier III

At Sunset, Harveys Lake, Pa.
639-2000

Weekend Special

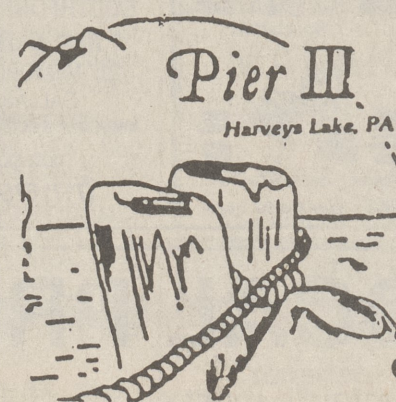
Shrimp Scampi

Salad, Vegetable, Potato
or Side of Pasta

☆☆☆☆

Banquet Facilities Available

- Parties • Showers • Weddings • Rehearsal Parties
- Business Meetings • Funeral Luncheons



Sandwich Menu Available At The Bar

Winter Hours
Closed Sun., Mon., Tues.
Open Wed. thru Sat.
5 - 11 P.M.

Reservations Strongly Suggested