

MEATS

Shur Save

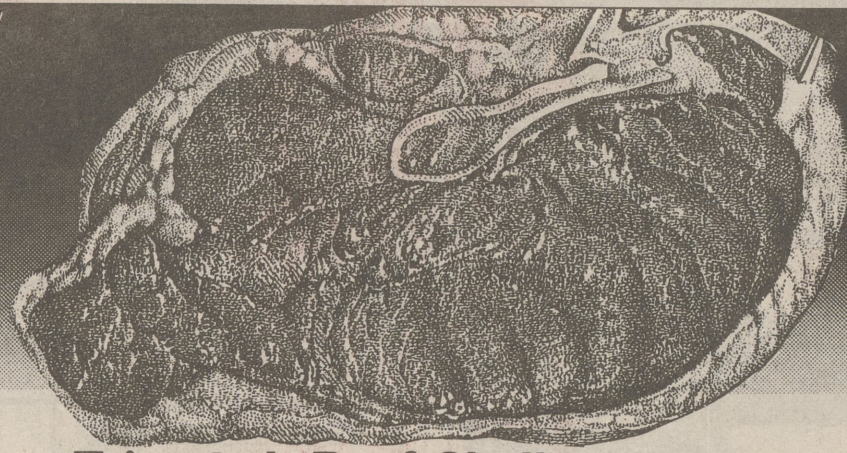


Fancy Grade "A", Quartered

Chicken Legs

Perdue, 59¢ Lb.

49¢ Lb.



Fancy Trimmed, Beef Shell

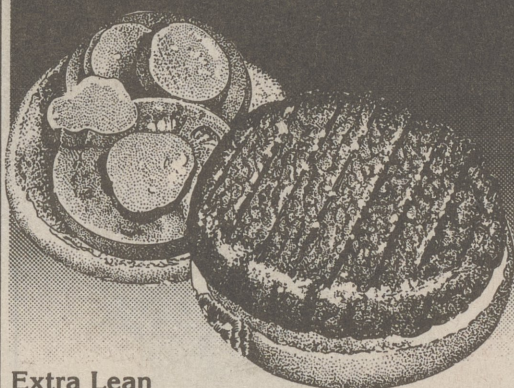
Sirloin Steak

1.99 Lb.



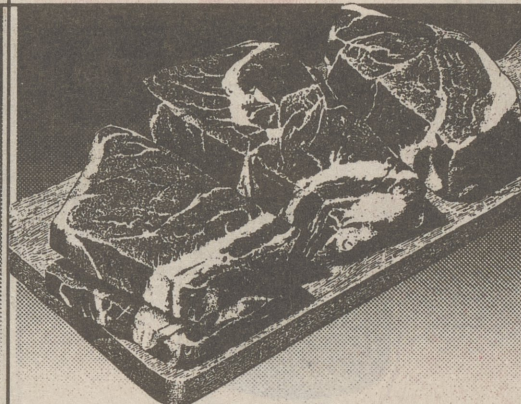
Boneless Chuck Steak or
Boneless Chuck Roast

1.99 Lb.



Extra Lean
Sirloin Patties

2.19 Lb.



(Shoulder Steak ... 2.39 Lb.) or
Boneless Shoulder Roast

2.29 Lb.



Boneless Beef Chuck
London Broil

2.39 Lb.



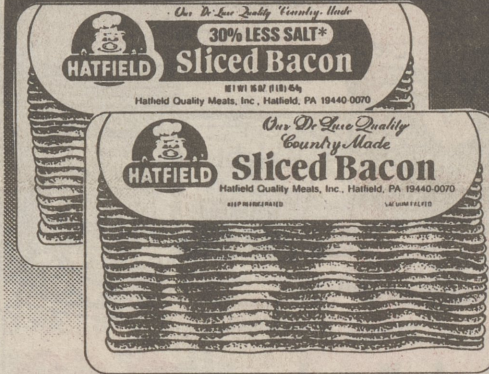
Louis Rich
Turkey Polska Kielbasa

1.59 Lb.



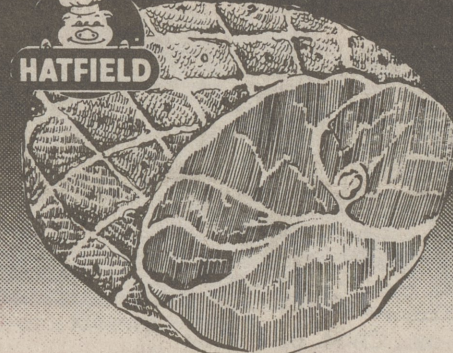
All Meat or Low Salt
Hatfield Franks

1.79 Lb.



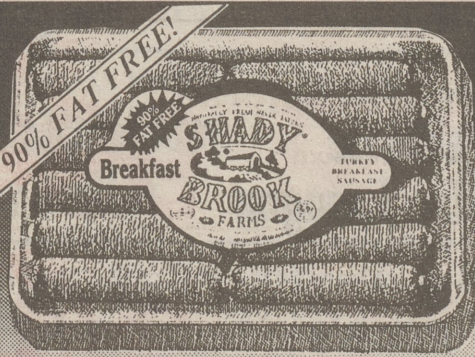
Regular or Less Salt
Hatfield Sliced Bacon

1.99 1-Lb. Pkg.



(Half Ham ... 2.19 Lb.)
In Natural Juice
Hatfield Whole Semi-Bnls. Ham

1.99 Lb.



Shady Brook Farms
Links, Hot or Sweet

Breakfast Turkey Sausage

1.99 Lb.



Shady Brook Farms

Fresh Ground Turkey

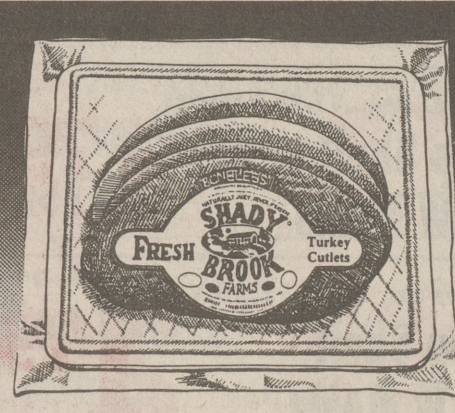
2.19 Lb.



Shady Brook Farms
4 to 7-Lb.

Fresh Turkey Breast

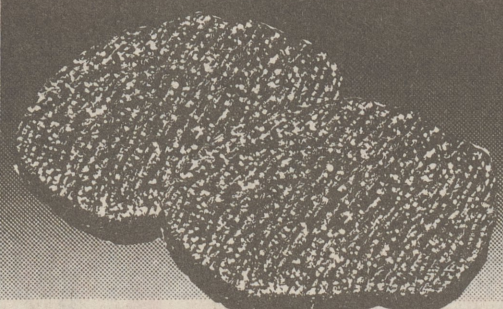
1.99 Lb.



Shady Brook Farms

Fresh Turkey Cutlets

3.99 Lb.



Juicy, Extra Lean
Cube Steak

2.49 Lb.



Lean
Beef Cubes

2.39 Lb.



14-oz., Quaker Maid
Sandwich Steaks

2.39



1-Lb. Pkg.
Hatfield Jumbo Grillers

1.99 1-Lb. Pkg.



Top Blade
Beef Chicken Steaks

2.19 Lb.



Sliced
Oscar Mayer Bologna

1.99 1-Lb. Pkg.



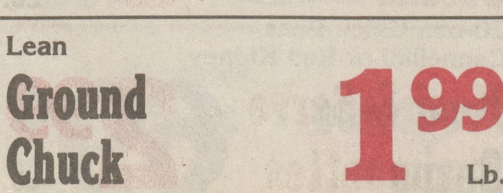
6-oz., Louis Rich
Sliced Turkey Breast

1.79



Smoked
Hatfield Pork Loins

3.59 Lb.



Lean
Ground Chuck

1.99 Lb.



Fresh Frozen
Icelandic Haddock

3.99 Lb.



Nibblers or Patties
On Cor Breaded Chicken

2.69 Lb.



1-Lb. Package
Hatfield Scrapple

99¢