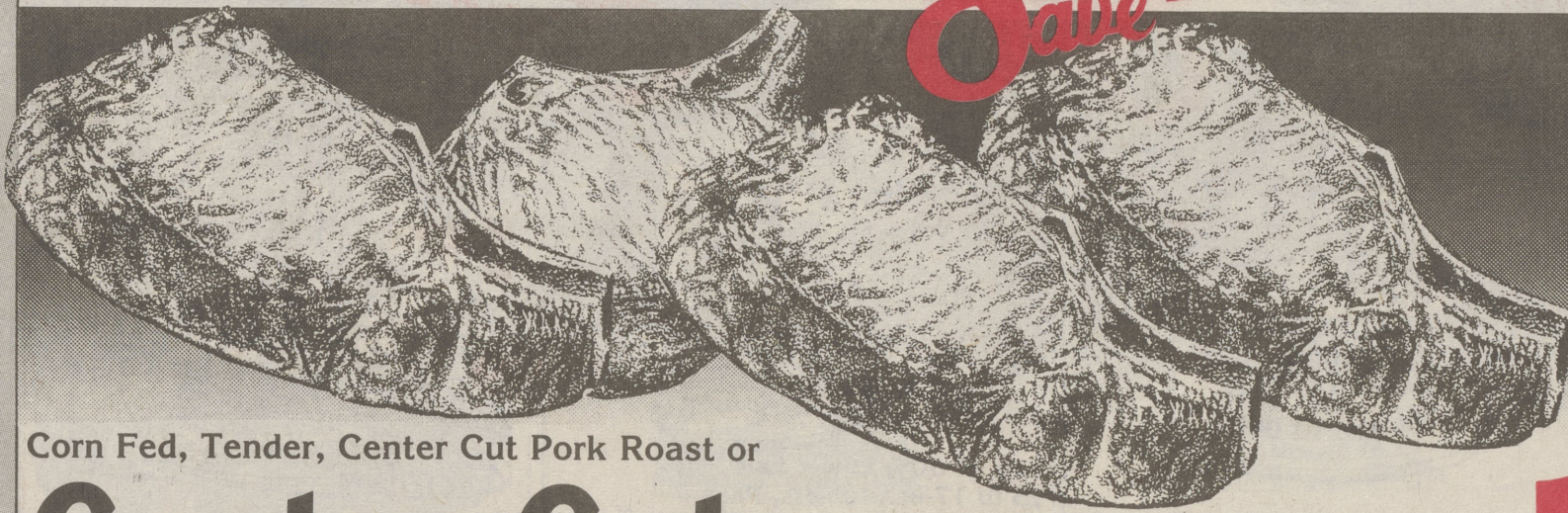


# MEATS

*Shur Save*



Corn Fed, Tender, Center Cut Pork Roast or

## Center Cut Pork Chops

Quick Fry Pork Chops...\$2.19-Lb.

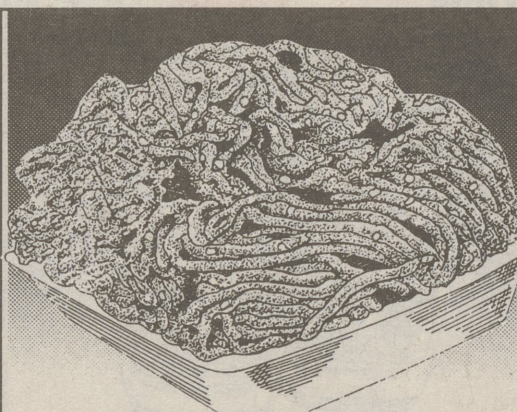
2-Lb. Bag  
Hatfield Sauerkraut  
**79¢**  
**1.99** Lb.



Meaty  
**Country Style Spare Ribs** **1.79** Lb.



Specially Seasoned Oven Ready  
**Boneless Porketta** **2.99** Lb.



**Country Style Sausage** **1.79** Lb.



3-Lb., Avg. - Pork Loin Roast or  
**Quartered Pork Loin** **1.79** Lb.



America's Cut, Boneless Pork Chops, or Tender Boneless  
**Pork Loin Scallopini** **3.99** Lb.



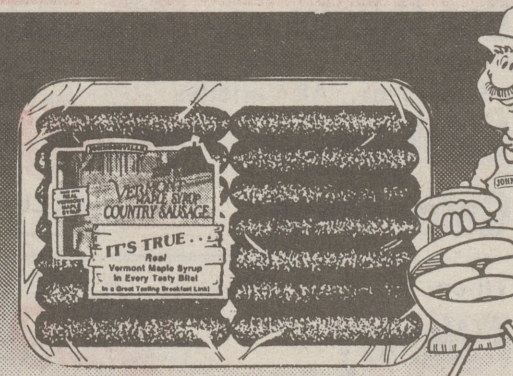
(Top Round London Broil...\$2.69-Lb.)  
(Top Round Steak...\$2.79-Lb.)  
**Boneless Top Round Roast** **2.49** Lb.



(Perdue...\$2.99-Lb.)  
**Boneless and Skinless Chicken Breast** **2.79** Lb.



(Ground Veal or Veal Patties, \$2.19 Lb.)  
**Milk-Fed Veal Scallopini** **6.99** Lb.



12-oz., Apple-Cinnamon or Vermont Maple  
**Johnsonville Sausage** **2.39** Lb.



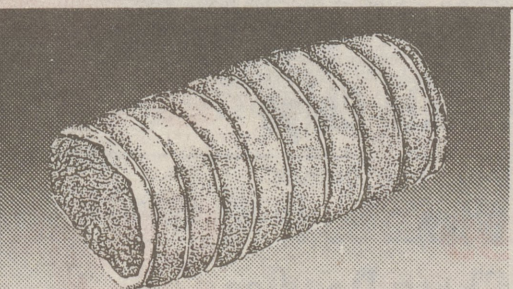
Irish O' Garlic - Italiani - Beer City Grillers  
**Johnsonville Sausage** **2.79** Lb.



8-oz., Pkg., Brown & Serve  
**Swift Sausage Links** **Buy 1 Get 1 Free**



Genuine USDA  
**Loin Lamb Chops** **5.99** Lb.



Chef's Prime Boneless Pork Roast (The Prime Rib of Pork) or  
**Boneless Pork Loin Roast** **2.99** Lb.



1-Lb., Package  
**Ball Park Meat Franks** **1.99** Lb.



1-Lb., Package Swift  
**Maple Sweet Bacon** **1.29** Lb.



Swift - Portions  
**Butterball Breast** **3.39** Lb.

Pork Loin  
**Sirloin End Chops** **1.89** Lb.

1-Lb. Pkg., Ball Park  
**Beef Franks** **2.19** Lb.

Brown & Serve  
**Swift Sandwiches** **1.19** Lb.

Swift  
**Li'l Butterballs** **1.29** Lb.

Cello-Wrap  
**Cod Fillet** **3.49** Lb.

14-oz., Royal Cut  
**Minute Steaks** **1.79** Lb.

Eckrich  
**Kielbassi** **1.99** Lb.

1-Lb. Pkg., Bun Size  
**Butterball Turkey Franks** **1.39** Lb.

Tasty  
**Buffalo Wings** **2.99** Lb.

32-oz., Royal Cut  
**Minute Steaks** **3.99** Lb.

Butterball  
**Turkey Kielbassi** **1.99** Lb.

On Cor - Breaded Veal or  
**Pork Patties** **2.39** Lb.

Water Added, Wilson Savory  
**Ham Slices** **2.49** Lb.