

Sell It Through A Friend!

Monday - Friday 9:00-5:00 p.m.

THE DALLAS POST

# CLASSIFIED

Call 675-5211

Buy • Sell • Trade Rent • Hire

### AUTOMOBILES

'79 PLYMOUTH SLANT/6 sedan, good work horse, \$495. Best offer. 288-4857. 29-4-P

Turn your old car into cold cash. 20 words, 4 weeks only \$7.00. 675-5211. 22-1fn-P

1984 DMC EAGLE, 4 wh. dr., 43,000 miles, garage kept. No rust, new tires, auto., \$4,500. 696-1875. 30-4-P

'87 PONTIAC FIERRO GT. V6, 5 spd., loaded, sun roof, exc cond. 34,000 miles. Summer driven. \$7,395. 675-0744 after 5 p.m. 30-4-P

1968 FORD FALCON, 2 door, rebuilt engine, 289 V8 auto., 581 Charles ST., Luzerne. Best Offer. 287-3262. 31-4-P

### HELP WANTED

GREENHOUSE-TROPICAL PLANTS-DISH GARDEN MAKER. Will train. Full or part time, Lehman area. Call 675-7447 or 287-0950. 32-1-P

PART TIME HELP WANTED for milk processing plant. Entry level position. 696-2881. 32-3-P

ATTENTION: GOVERNMENT JOBS-YOUR AREA! \$17,840 - \$69,485. Call (1) 602-838-8885, Ext. R-10078. 30-3-P

ATTENTION: EASY WORK EXCELLENT PAY! Assemble products at home. Details. (1) 602-838-8885 Ext. W-10078. 30-3-P

OPEN AUDITIONS FOR TELEVISION SHOW - 13 to 16 years. Male/female. Bring resume and 8x10 photo. Be prepared to read. Holiday Inn, 800 Kidder St., Wilkes-Barre, Saturday, Aug. 25, 9-5. 32-2-P

ATTENTION: EARN MONEY READING BOOKS! \$32,000/year income potential. Details. (1) 602-838-8885 Ext. Bk. 10078. 30-3-P

WEEKENDS WERE MADE FOR FUN! Share your good times with children. Counseling & Care Services is looking for weekend foster parents. For more information call 717-961-3621 or until 8 p.m., 1-800-326-9504. E.O.E. 30-5-P

ATTENTION: POSTAL JOBS! Start \$11.41/hr! For application info call (1) 602-838-8885, Ext. M-10078, 6 a.m.-10 p.m., 7 days. 31-3-P

EARN EXTRA MONEY FOR CHRISTMAS. Demonstrate Christmas Around The World. No investment. No gimmicks, free kit and supplies. Earn an average of \$10 to \$16 per hour. Call for more information. 822-0277 or 825-3771. No obligation. 31-3-P

WORK AT HOME at your own pace-make up to \$88 day. Assembling variety of products. 1-900-226-5151 ext. 355. \$10 fee. 32-3-P

### GARAGE SALE

GARAGE SALE - 102 Village Drive, Shavertown, Sat., Aug. 18, 9 a.m.-3 p.m. Toys, bikes, housewares, more. Follow signs from Pioneer to W. Mt. Airy. 32-1-P

3-FAMILY YARD SALE, August 18, 9-4 p.m. Corner Midland Drive and East Center Hill Rd., Dallas. Toys, bikes, antiques, leather goods, attic treasures, etc. 32-1-P

YARD SALE - Antiques, clothing, etc. 9 a.m. to ? Aug. 18, 19. Corner Mountainview Drive & Old Rte. 115, Lehman. 32-1-P

HOMESTEAD GARAGE SALE, Children's toys, furniture, antiques, dishes, glassware, many household and novelty items. Turn right onto Briarcrest Drive from Rte. 415 in Dallas (1st road past The Castle). Watch for signs. Aug. 18 & 19, 8:30-5 p.m. 32-1-P

ESTATESALE, Aug. 17-18, 10 a.m.-4 p.m., 126 Church St., Edwardsville. "Lifetime of Stuff" furniture, to knick knacks. Something for everyone. 32-1-P

## KINGSTON'S CLEANEST USED CARS

'88 DODGE POWER WGN. 4x4, Auto. w/Flow Pkg. \$10,450	'88 CHEVY CAVALIER Z-24 Conv. Low Mi., All the Toys. Only \$11,750	'87 FORD ESCORT GT An Absolute Knockout Low Mi., Loaded! \$5650	'87 DODGE DAKOTA PICKUP V-6, Auto., Low Miles. \$6795	'88 FORD T-BIRD TURBO Cap., Low Mi., Moon Roof, Outstanding! \$9850	'90 GEO PRIZM LS Model, Full Power, Auto. w/Air. \$8650	'89 CHEVY BERETTA GT A Loaded Beauty. Low, Low Miles. Must See! \$8450	'87 PONTIAC GRAND AM Auto., Air, Stereo, V-6, Low Miles. \$5850
'86 OLDS CALAIS Local Trade, Auto. w/Air. Steel III! \$3950	'88 FORD FESTIVA Low Mileage, Economical Car! \$3950	'86 MONTE CARLO T-tops, V-8 Full Power \$6995	'86 MERCURY TOPAZ 4-dr., 48,000 Miles. \$4295	'88 CADILLAC SDN. DeVILLE Low Miles, Sharp. \$12,995	'88 CELEBRITY Eurosport Wgn. Low, Low Miles, V-6. All the Toys! \$8450	'89 PONTIAC GRAND PRIX Low Miles, 2-tone Beauty. Priced for Action! \$9850	'90 GRAND PRIX TURBO EDITION 600 Mi., Win. Sticker Approx. \$2700. Only \$19,950
'86 MERCURY COUGAR All the Options! Must See, Local Trade. \$4995	'86 BUICK RIVIERA T-TYPE Low Miles, Loaded! \$8450	'89 CHEVY BLAZER 4x4 Full Size, Loaded, 10,000 Miles. \$14,750	'88 FORD MUSTANG LX 15,000 Miles, Loaded, Must See! \$7850	'84 FORD LTD Square Wagon, Just Traded. \$3495	'87 CHEVY Caprice Bgm. Ed. Low Miles, Loaded! \$7950	'89 PONTIAC GRAND AM Low Miles, Auto., Air, Stereo. \$7995	'90 JEEP LIMITED 4-DR. Full Power, Low, Low Miles. \$19,995
'87 CHEVY BLAZER 4x4, Auto., Air, 2 Tone Paint. \$9150	'89 JEEP CHEROKEE 4-DR. Auto., Air, Nice! \$12,995	'87 FORD T-BIRD All the Toys, Local Trade, Low Miles. \$7450	'87 DODGE SHELBY CHARGER TURBO Low Mileage, Local Car, Steel III \$4650	'88 FORD BRONCO II 2-tone, Air & More. \$10,495	'87 JEEP WRANGLER 26,000 Miles, Local Trade, Soft Top. \$6995	'86 FORD BRONCO II Priced to Sell! \$6395	'85 MERCEDES 190 EDITION Just Reduced. Only \$13,450



INTERNATIONAL MOTORS

445 MARKET ST., KINGSTON — 287-5858 — Former Kingston Auto Sales Location

### FOR SALE

FASHIONS FROM THE PAST, shoes, hats, dresses, misc. \$1, \$3, \$5. 287-6612. 30-4-P

ITALIAN PROVENCIAL DINING ROOM SET. Kimbal organ, Whirlpool washer, Singer sewing machine, single bed. 824-6987. 30-3-P

SONY STEREO. 8 track, record player, AM/FM radio with 2 speakers has head phone outlet \$50. 288-1223. 30-4-P

KING SIZE BEDSPREAD, green \$20; double bed spread \$10; 30 tennis balls used, \$6. 287-0639. 30-4-P

MOTOROLA 2 WAY RADIOS, 1 base, 3 mobile 35 watt works off repeater \$350 each. 696-4255. 30-3-P

PORTABLE ZENITH TV, black and white, 12 inc. \$25; 5 ft. metal pole lamp w/3 lights, cone shade, \$22. 4 ft. fluorescent ceiling fixture, bulbs \$15. 287-6273. 30-4-P

NEW MAGNUS 11 KEYBOARD \$15; suitcase never used, Ige, \$18; American Tourister case, new \$60 val., \$20. 288-5089. 30-4-P

NEW INFANT BABY CLOTHES (boy or girl) almost half price still in packages or \$42 worth \$24. 288-5089. 30-4-P

LADIES 26 IN. BIKE, 3 spd. exc. \$50. Kenmore zigzag sewing machine \$100; Hamilton Beach mixer \$25; child's scooter \$30. 675-1970. 30-4-P

21" JACOBSON, power propelled Briggs & Stratton Engine. \$75. 824-4480. 31-4-P

4 PIECE REDWOOD PATIO SET, lounge, 2 seater, chair, table, cushions, \$150. 696-1685. 31-3-P

CRAIG TURNABLE, good cond. \$60.; air cleaner \$44. 822-2525. 31-4-P

Something you want to sell quickly and at a low cost? Call The Dallas Post. 675-5211. 36-1fn-P

BLONDE MINK JACKET, exc. cond., size 10-12, \$1200. 287-7831 after 4 p.m. 32-1-P

BROWN PLAID SOFA, glass and brass coffee table \$50. 696-3007. 32-4-P

SOLID ROCK MAPLE TABLE, 56x38 w/one leaf, \$65. 287-5497. 32-4-P

### FREE

FREE Horse manure. Upper Demunds Rd., Dallas. Call after 4 p.m. or on weekends. 675-4182. 36-1fn-P

FREE Longhaired domestic male cat, 1 1/2 years old. Declawed, neutered. 675-2908. 30-4-P

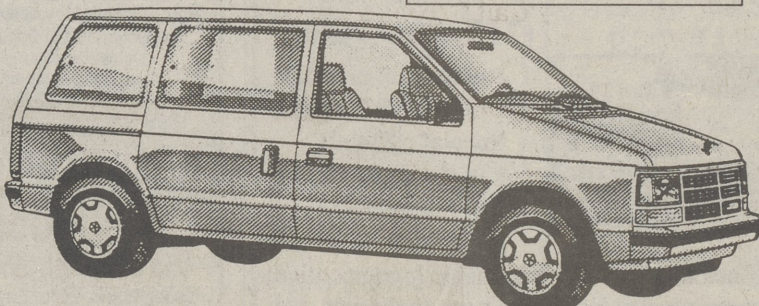
FREE steel two-step porch frame, good for trailer or small building. Call 696-2998. 32-4-P

## VAN SPECIALS!

### 1990 DODGE CARVAN

50 AVAILABLE All Models, All Options

#1 Selling Mini Van In The World!!!



- 2.5 Liter Engine
- Automatic Transmission
- Delux High-back
- Front Wheel Drive
- Power Steering
- Power Brakes
- AM/FM Stereo
- Halogen Headlamps
- Deluxe Wheel Cover
- Delux Intermittent Wiper
- Much, Much More

STARTING AT \$12,499\*

\* Taxes, Tags Extra.

Stock No. 214

## WILKES-BARRE Dodge

2150 SANS SOUCI PARKWAY HANOVER TWP. WILKES-BARRE, PA

OPEN Mon. thru Fri. 8:30 A.M. 'til 9 P.M. Saturday 8:30 A.M. 'til 5 P.M.

WE WILL NOT BE KNOWINGLY UNDERSOLD

### TRUCKS

'85 CHEVY S10 PICKUP, 4 cyl., 4 spd., 52,000 miles, \$2,000. 696-4255. 30-4-P

'84 FORD RANGER PICKUP, 4 cyl., 4 spd., 65,000 miles, \$2,100. 696-4255. 30-4-P

### RENTALS

NEWLY REMODELED UPSTAIRS APT. with beautiful sun porch, country, new appliances, furnished/unfurnished. Good for single person, career oriented. Non smoker preferred. No pets. \$500 mo. includes everything but phone. Send name, address, phone number, Penny Saver, P.O. Box M, Tunkhannock, PA 18657. (29-4-P)

### FIREWOOD

FIREWOOD, \$100 cord. 675-4201. 30-3-P

### WANTED

SOMEONE WHO CARVES ANIMALS in wood. Call 639-2819. 31-4-P

### WORK WANTED

DEMEX BUILDERS - Residential Construction and Home Improvement. Framing crew for hire. Call 288-4795 for free estimates. 31-3-P

## Sell It!

with a Post classified 675-5211

## How to Place a Classified Ad

Call: 675-5211 or Write: The Dallas Post P.O. Box 366 Dallas, PA 18612

### PRIVATE PARTY RATES

Up to 15 Words:  
1 Week \$2.50, .15 for each add'l word  
**BEST RATE:**  
3 Weeks \$6.00, .40 for each add'l word  
These rates are for prepayment. Add \$1.00 to total if billed. Cancellable but not refundable

PLEASE READ YOUR AD!  
The Dallas Post will accept responsibility for the first incorrect insertion only.

### SPECIAL RATES

**AUTOS FOR SALE:**  
20 Words, 4 Weeks, \$7.00  
**REAL ESTATE FOR RENT:**  
20 Words, 4 Weeks, \$7.00  
**REAL ESTATE FOR SALE:**  
20 Words, 6 Weeks, \$10.00  
**FREE ADS:**  
Up to 20 Words, 4 Weeks. Items must be less than \$100.00. Prices must appear in ad.

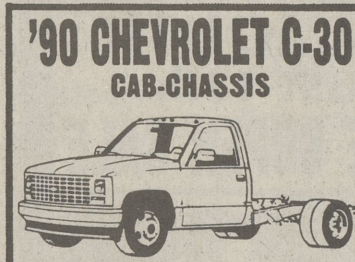
CALL FOR BUSINESS RATES AND THE SERVICE DIRECTORY

## Do you have news for us?

Send or bring it to The Dallas Post, P.O. Box 366, Dallas PA 18612. Or call the office at 675-5211

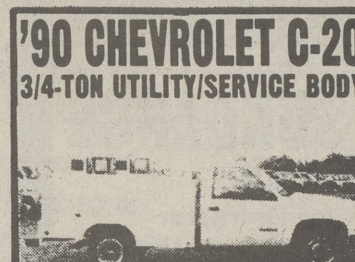
## COMMERCIAL TRUCKS

TOLL FREE 1-800-444-7172



- Stock No. 1152
- 5.7L EFI V-8 Engine
- Heavy Duty Chassis
- 4-speed Manual Transmission
- Power Steering
- Power Brakes
- 7.50/16D Tubeless Tires
- Dual Rear Wheels
- 9-foot Body

\$13,990\*



- Stock No. 1967
- 10-foot Body
- Single Rear Wheel
- 5.7L EFI Engine
- Automatic Transmission
- Power Steering
- Power Brakes
- Heavy Duty Chassis
- Rollup Rear Doors
- 8600 GVW

\$15,999\*

VALLEY CHEVROLET/Geo  
608 Kiddle St. Wilkes-Barre, Pa. 821-2772  
WE WILL NOT BE KNOWINGLY UNDERSOLD

**WHY BUY A COPY?**  
(Geo Metro and Tracker, made by Suzuki)  
**WHEN YOU COULD OWN AN ORIGINAL SUZUKI!**  
2 YR., 24,000 MI. BUMPER TO BUMPER WARRANTY WITH ZERO DEDUCTABLE!

<p>1990 SUZUKI SWIFT GA 4 DR., Auto, EFI 4 Cyl., Power Brakes, RWDef., Interval Wipers and More. S-026 Was \$9948 Now <b>\$7951</b></p>	<p>1990 SUZUKI SWIFT GA 5 Spd., EFI 4 Cyl., P. B., RWDef., Tinted Glass, Mud Flaps, Hal. Headlamps, 425 more horsepower than Geo Metro. S-009 Save \$1997 Now <b>\$146**</b></p>	<p>1990 SUZUKI SWIFT GA 4 DR., Auto, EFI 4 Cyl., Power Brakes, RWDef., Interval Wipers and More. S-026 Was \$7848 Now <b>\$5991</b></p>	<p>1990 SUZUKI SWIFT GA 5 Spd., EFI 4 Cyl., P. B., RWDef., Tinted Glass, Mud Flaps, Hal. Headlamps, 425 more horsepower than Geo Metro. S-009 Save \$1857 Now <b>\$1114**</b></p>
<p>1990 SUZUKI SWIFT GA 4 Dr., 5 Spd., RWDef., Power Brakes, Much More. S-013 Was \$8848 Now <b>\$7158</b></p>	<p>1990 SUZUKI SWIFT GA 4 Dr., 5 Spd., RWDef., Power Brakes, Much More. S-013 Save \$1690 Now <b>\$132**</b></p>	<p>1990 SUZUKI SIDEKICK 4X4 Convertible, 5 Spd., P. Brakes, Cassette, Tach. S-020 Was \$14,463 Now <b>\$9956</b></p>	<p>1990 SUZUKI SIDEKICK 4X4 Convertible, 5 Spd., Disc Brakes, Stereo Cass., Sport Appearance Package, More. S-027 Save \$4507 Now <b>\$9956</b></p>

LOOK! 4 WHEEL DRIVE UNDER \$190.00 PER MO.!!

6 SWIFTS • 9 SIDEKICKS • 10 SAMURAI'S IN STOCK!

NANTICOKE SUZUKI 450 W. MAIN ST. 824-9000/735-2510

\*Payment based on 60 month closed end lease with purchase option available. Rebates applied. Taxes, tags and bank fees excluded. First payment and security deposit required. Excessive mileage, wear & tear charge may apply. Not responsible for typographical errors.

## How to survive the 90's.

**ABS standard. Air bag standard. The safety standard. \$17,378 standard.**

When it comes to buying a car, it's impossible to be too careful. The same goes for driving one. That's why every single 1990 Saab 900 gives you the two most effective, most wanted and most expensive safety features available. Without adding one single dollar to the 1989 price. There's something else you need to know. Saabs have been rated the safest cars in their class for the past five years!\*\* Yes, even safer than Volvos.

Yet, none of this safety comes at the expense of driving fun; which is the whole point of a Saab in the first place. It's a point which your Saab dealer will be happy to demonstrate with a test drive. Do it soon. We'd hate to launch the 90's without you.

# SAAB

**KUNKLE MOTORS**  
R.R. #1, Dallas • Kunkle  
(Just off Route 309, a few miles North of Dallas)  
675-1546

\*\*Based on Highway Loss Data Institute reports of injury claim frequency © 1989 Saab-Scania of America, Inc.  
\*Manufacturer's Suggested Retail Price for Saab 900 3-door with manual 5-speed transmission, \$16,995.00 plus \$383.00 freight charges excluding taxes, license, dealer charge and options