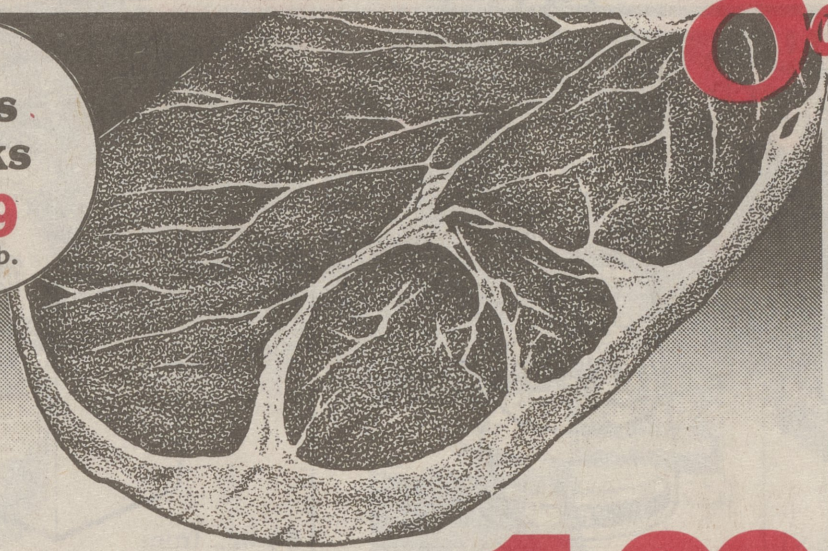


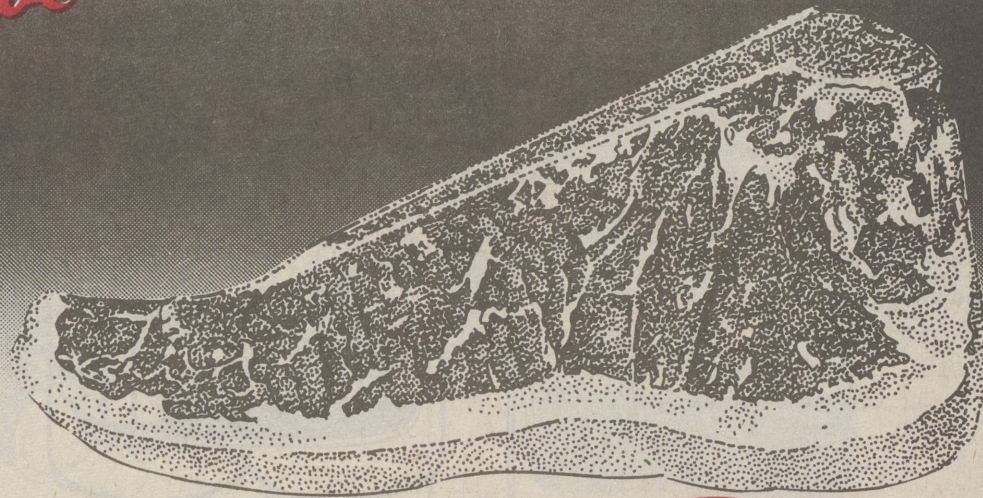
MEATS

Shur Save

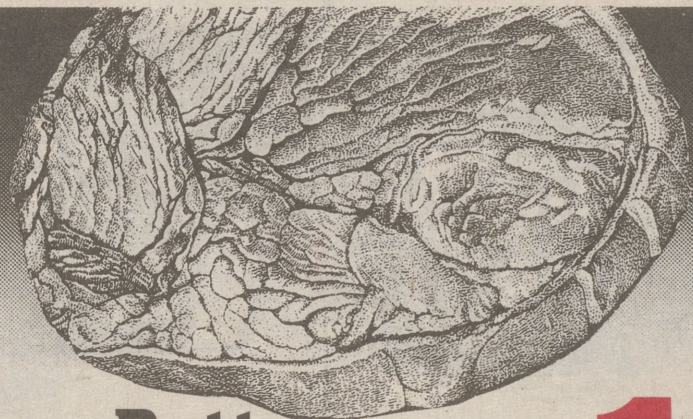
Fancy Swiss Steaks
1⁹⁹
Lb.



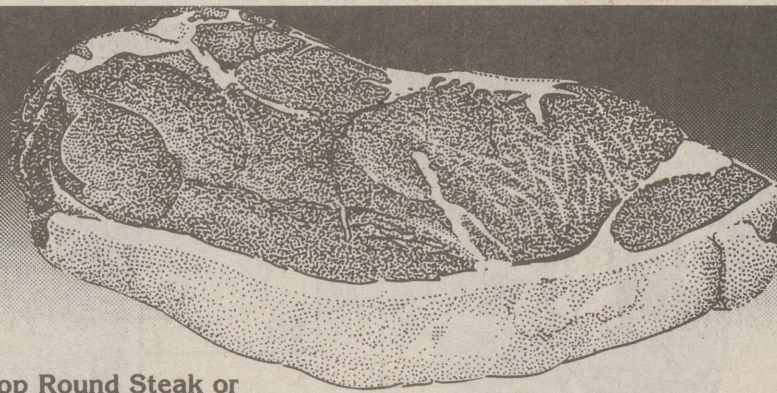
Boneless Full Cut Round Steak **1⁹⁹**
Lb.



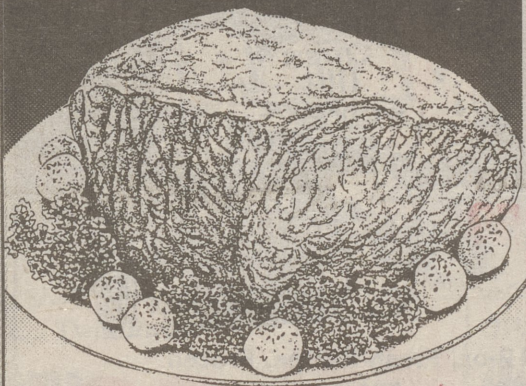
Fancy Trimmed, Bone In New York Strip Steak **3⁹⁹**
Lb.



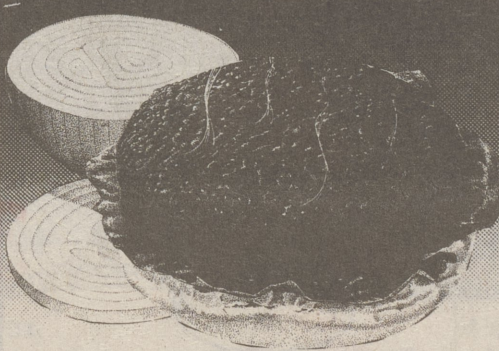
Boneless Bottom Round Steak **1⁸⁹**
Lb.



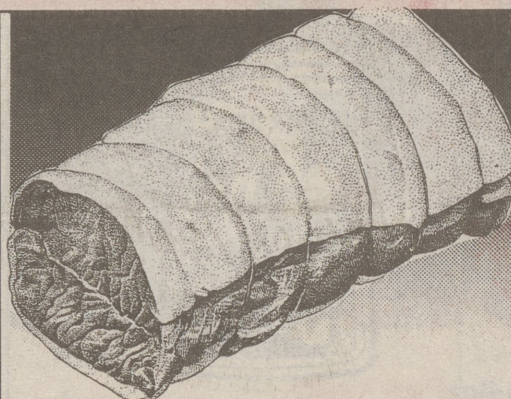
Boneless Top Round Steak or Boneless Sirloin Tip Steak **2⁵⁹**
Lb.



Bottom Round Roast **1⁹⁹**
Lb.



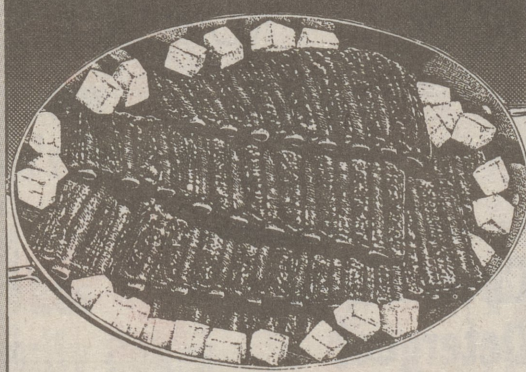
Freshly Ground Round or Extra Lean Sirloin Patties **2¹⁹**
Lb.



(Eye Round Steak, *2.79 Lb.) Eye Round Roast **2⁵⁹**
Lb.



Boneless Sirloin Tip or Top Round London Broil **2⁵⁹**
Lb.



Baby Sheet Spare Ribs **1⁹⁹**
Lb.



Reg. or Low Salt-3-Lb., Box Hatfield Meat Franks **5⁹⁹**



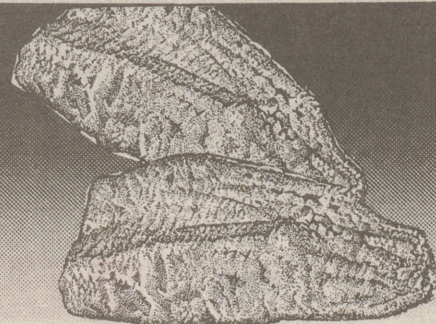
Shady Brook Fresh Turkey

10 to 14-Lb. Hen Turkeys **89¢**
Lb.

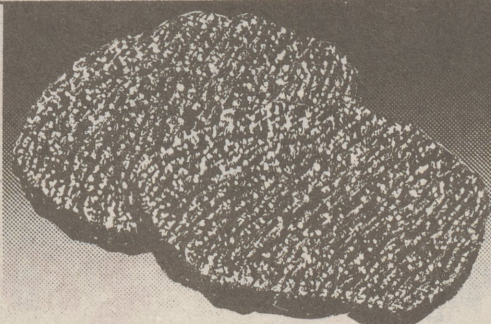
Turkey Cutlets **3⁹⁹**
Lb.

Ground Turkey **1⁹⁹**
Lb.

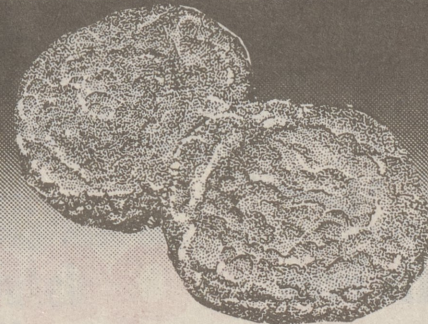
Breakfast Links-Hot or Sweet Turkey Sausage **1⁹⁹**
Lb.



Icelantic Cello Haddock Fillet **3⁹⁹**
Lb.



Fancy Beef Cube Steak (From the Round) **2⁵⁹**
Lb.



Fresh, All Varieties Sausage Patties **2⁴⁹**
Lb.



1-Lb., Pkg. Swift Premium Bacon **1⁹⁹**

32-oz., Sandwich Steak-Um's Steaks **5⁴⁹**

Boneless Top Round or Rotisserie Roast **2⁴⁹**

Butterball Bun Size Turkey Franks **1³⁹**
Lb.

Swift Butterball Breast Portions **3⁹⁹**
Lb.

Breaded Pork-Veal-Chicken On Cor Patties **2⁴⁹**
Lb.

Boneless Rump Roast **2²⁹**
Lb.

8-oz., Swift Brown & Serve Lite Sausage **1²⁹**

Swift Brown & Serve Sausage Links **1¹⁹**
8-oz.

Fresh Calves Liver **2⁹⁹**
Lb.

Butterball Turkey Kielbasa **2³⁹**
Lb.

Swift Brown & Serve Sandwiches **1¹⁹**