

Only yesterday

60 Years Ago - July 18, 1930 DALLAS TAKES STEPS TO COMPLETE SCHOOL

At a special meeting Tuesday night, Dallas Board took steps to have the new school completed by September with the four year high school completed.

The best tennis players in Pennsylvania are to play at the Irem Temple Country Club this Saturday. It is possible a 100 players will enter.

The huckleberry season is now in full swing in the area.

The Saturday Night Kid starring Clara Bow played at the Himmler Theatre.

50 Years Ago - July 19, 1940 BANKS CONSTRUCTION GETS ROAD CONTRACT

Banks Construction Company gets \$329,000 contract for the final link in the new road, which connects Wyoming Valley to Tunkhannock.

Daniel C. Roberts seeks funds to help maintain their volunteer company, their first campaign for funds in six years.

The Free Methodist Campground was taxed to capacity with nearly 250 young people from six eastern states descending on the camp in East Dallas this week.

The Sickler family reunion was held at Idetown with about 70 in attendance.

Wed - Margaret Lynn and George R. Ritenour.

Dallas Arrows open new Bi-County League last week with a double win from the Jenks of Tunkhannock.

40 Years Ago - July 21, 1950 LT. SMITH PLACES IN TRACK MEET

Marine Second Lt. Robert H. Smith, son of Col. Norman W. Smith, Huntsville, came in second in the 1950 All-Marine track meet held at the Marine Corp School at Quantico, VA as a member of the Marine Corps Recruit Depot team.

Buyers expect a big tomato crop this year from the local farmers in this area.

Edward Tutak, Jr., son of Mr. and Mrs. Edward Tutak, Dallas, departed for Europe, July 10, to study abroad.

The Library Board is weighing

expansion since the present building is outgrowing its present facility.

Engaged - Dorothy Weaver and Henry Kraft; Eleanor Stash and Emery Shady.

Mr. and Mrs. Arlean T. Bowman open a new restaurant in Dallas at the Y between Lake and Church Street.

30 Years Ago - July 21, 1960 MCCRORY'S HIRES 41 EMPLOYEES

Back Mt. Library Board of Directors hear auction may net \$18,000 for this year's event.

McCrory's Store in the Back Mountain Shopping Center hires 41 local people.

The old Dallas Fair Grounds have been brought into focus this year by the location of the new Dallas High School near the historic spot.

Beaumont defeats Jenks 7-6.

Wed - Priscilla Moore and Sherwood Krum; Jayne L. Alexander and Wilber J. Smiles, Jr.; Carolyn Joan Goeringer and Robert H. Raymond.

Engaged - Margo Jeanette Spencer and John H. Gordon.

Wives of Back Mountain builders, contractors and suppliers are forming a women's auxiliary to the Back Mountain Builders Association.

20 Years Ago - July 23, 1970 MONEY FOR POOL TIED UP IN HARRISBURG

A bill which would provide for a \$335,000 swimming pool at Frances Slocum State Park was recommended to the Committee on Rules in Harrisburg Monday as legislators strove to clear the docket of unfinished business before recessing for their summer vacation.

Unless a formal Back Mountain police commission is formed and soon-the three communities presently considering an informal mutual assistance agreement stand to lose as much as \$10,000 in state aid.

Dallas cheerleaders are attending the International Cheerleading Foundation Inc. at Lycoming College this week where they are taught new techniques and routines for use in the coming school year.

Dallas School presents its summer band concert in the Dallas Senior High School gymnasium.

Rec Center

(continued from page 1)

Borough Councilman George Thomas to begin planning for the park.

In addition to the funds from the Sesquicentennial, the borough allocated \$2700 for immediate use, and the Dallas Junior Women's Club raised \$300 for the purchase of basketball and volleyball equipment. The borough's allocation being for immediate use was lost to the group since it was not used before the end of the fiscal year.

The following year, part of that amount was regained because Council set aside \$5,000 for the park in 1969. Another boon to the planners was that matching funds would be available from the state from a \$500 million conservation and recreation program if certain application procedures were followed.

The approval of this grant and the preparation of plans and specifications took more time and it was another year before plans were made to flood the proposed tennis courts to provide ice-skating facilities for Back Mountain residents.

Despite careful planning and continued efforts of the park group to get the recreation park in operation, it was not until 1971 that the Dallas Borough Park was open to residents of the community. Four teenagers had been added to assist the committee as an advisory group, representing their age group. These were Arline Kozich, Shirley Reese, Blake Saba and Peter Shiner. They were to recommend new programs and to evaluate programs that were in progress at the time.

Once the playground was open, Ann Gallagher was the supervisor of the park from 1971 to 1972. Chuck Wilson was supervisor in 1977 and prior to him Shirley Brown Breymer was supervisor but for how many years was unknown. In 1978, the late councilman Kenneth Young contacted Jay Pope, Dallas school faculty member and asked him to take the position.

Pope continued in the position until 1988 when Jack Wolensky served as supervisor for that summer. In 1989, Pope took over as supervisor for the year as a favor to Wolensky, who is now in charge of the park this summer.

Irem Potentate's Ball set for Saturday

The Potentate's Ball honoring illustrious Sir Cliff Jones is considered by Nobles of Irem Temple to be the premier social event of the year. This year's ball, bearing the theme "Rhapsody in Blue" will be held on the pavilion of the Irem Temple Country Club, Dallas, on Saturday, July 21.

Potentate, Jones has appointed Nobles Hugh Williams and Don Berry Co-chairmen of the event.

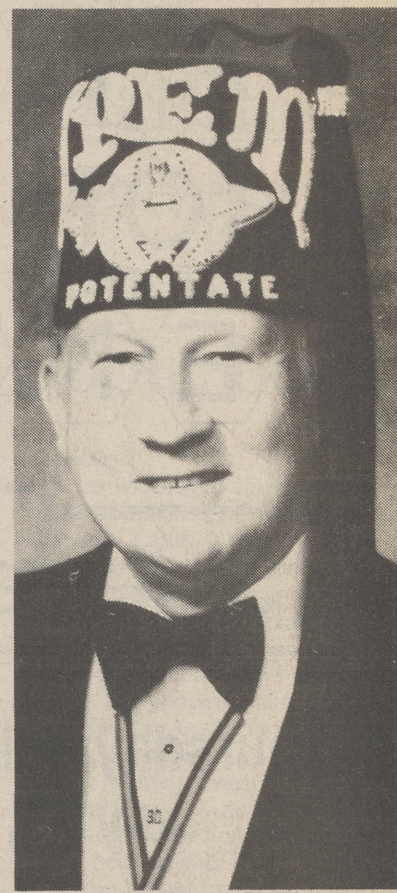
One of the highlights of the evening will be the Grand Entrance of Potentate Jones and his lady, Peg. After being escorted to the stage by his Chief Aide, Noble Jim Tanner, they will welcome and introduce members of Irem's Divan, Past Potentates of Irem Temple, visiting dignitaries from other Shrine Temples and their ladies.

This gala affair will start with a social hour beginning at 5:15 p.m. Irem's String Band under the direction of H. Dean Balcomb will entertain. A dinner starting at 6:30 p.m. in the Club House's Terrace Room and Main Dining Room will precede the actual ball. The pre-ball festivities are open to the general Nobility and their guests. However, dinner reservations will be limited to the first 300 persons and may be made by calling the Country Club at 675-1134. Admission to the ball itself, which will be held on the pavilion, will be by Fez and is also open to the General Nobility. Prior to the Grand Entrance, Irem's Jazz Band under the direction of Noble Bill Garinger, will present a concert on the pavilion at 8:30 p.m. Noble Lee

Vincent and his Big Band will provide music for dancing at the ball starting at 9:30 p.m.

Potentate Jones has appointed the following additional Nobles to serve as Chairmen and Co-chairman: Tom Phillips and Ivan Ziegler, Directors of Work; Jim Tanner, Harold Snyder, Bob Farrell and Milan Shepherd. Decorations: Harry Wood Jr., Al Dungey, Dan Kuehn, Ed Tippet, Keith Murray and Willard Phillips. Photography: Jim Kozemchak, Jr. Publicity: Rick Spinick. Transportation: William H. Cordy and Bob Marr. Color Guard: Jim Beyer and John Norcross. Reception and Aides: Wilbur Knorr. Honor Aisle: Jim Beyer. Uniformed Units Honor Aisle: Earl Rau. Parking: Stewart Harry, Ken Stecker and Jack Nixon. Masonic Relations: Richard H. Disque, II, D.D.G.M.; Ben Lee, D.D.G.M. and Park Johnson. Grand Entrance: Bob Emery and Bill McHenry. Announcer: Milan Krupka.

Ex-officio to all committees: Don Anthony, Chief Rabban; Fred Dietrich, Assistant Rabban; Ken Burkle, High Priest & Prophet; Gordon Dussinger, Oriental Guide; Paul G. Nicholson, Treasurer; Cromwell E. Thomas, Recorder.



CLIFF JONES
Irem Potentate

Water company has new hours

Effective Monday, July 23, 1990, the payment window will have a new closing time of 4 p.m. Payment window hours will be 8:30 a.m.-12 p.m. and 1 p.m.-4 p.m.

A drop box is located to the left of the main entrance for the convenience of customers who stop after hours.

An Open Invitation To Shop Our Luzerne County Store



Children's Boutique

At The Victorian House

1027 Wyoming Avenue, Forty Fort, PA 18704
283-9050

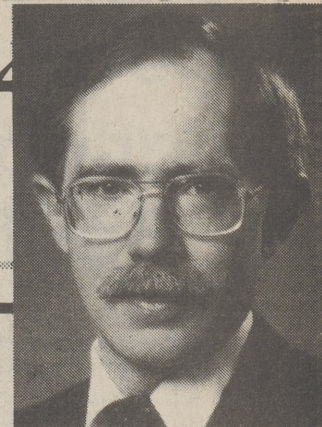
Is Now Open

Tuesday - Saturday
11 a.m. - 5 p.m.

Join Us July 28th For Our Grand Opening Celebration

DR. ROBERT GREENHALGH PRESENTS

TO YOUR HEALTH



Caution while tanning can help prevent skin cancer

My daughter spends a lot of time in the summer working on her tan. I am afraid that she is asking for trouble. Can exposure to too much sun cause cancer?

The sun acts cumulatively in damaging our skin. It is not just today's sun that is harmful: The damage may start with overexposure to the sun in our childhood, and continue to accumulate.

Skin cancer is the most common form of cancer, but if detected and treated early, it is the easiest to cure. The skin, the body's largest organ, is constantly subjected to external abuse by infections and by irritations from clothing, the weather and chemicals in the air. Internally, the products of our normal bodily functions also affect our skin.

The worst external enemy of the skin is the sun. And as our leisure time increases, we are spending more time in the sun.

This summer there are ways you can prevent the sun from damaging or "poisoning" your skin:

- Use common sense and avoid overexposure to the sun.
- Wear a sun-screening lotion or cream, and if you have very fair skin, wear a broad-brimmed hat and long-sleeved shirt.
- Stay out of the summer sun when its rays are the most intense at midday.

Because people are living longer and spending more time pursuing outdoor activities, physicians expect to see a greater incidence of skin cancer in the future.

The two most common forms of skin cancer are

basal cell cancer, a common but slow-growing malignancy, and squamous cell cancer, which is found less frequently but may spread more rapidly. These cancers usually appear on exposed parts of the body; the arms, neck, face and the back of hands.

Basal cell and squamous cell cancers are characterized by a pale, waxy, pearly nodule that ulcerates and crusts, or by small, red, scaly bumps or patches. They usually grow locally and don't spread to other parts of the body.

A third and far more serious form of skin cancer is malignant melanoma, which, while still relatively uncommon, is increasing in incidence. This form of skin cancer is characterized by a rapidly growing black or brown mole-like growth that may become ulcerated and bleed easily if injured even slightly. The survival rate for malignant melanoma is 70 percent, lower than the 99-percent rate of other forms of skin cancer because it spreads so quickly.

Older people often develop precancers call actinic keratosis, which may eventually become cancerous. Although they are non-malignant, these precancers should be examined and treated if they enlarge before they develop into squamous cell cancers.

If you have any bump or growth on your skin that changes in size or color or bleeds persistently, you should have it examined by a doctor. Your doctor will continue to examine you regularly for other malignant bumps or growths, because anyone who has had one skin cancer is more susceptible to others. Detected early, skin cancers usually can be cured.

This health awareness is brought to you as a service to the Back Mountain community by Robert Greenhalgh, M.D. Dr. Greenhalgh is a Back Mountain physician who offers general pediatric, gynecology, and geriatric medical care, on a personal basis. Board-Certified in Family Practice, he is on staff at Mercy, Nesbitt, and Wilkes Barre General Hospital.

Robert Greenhalgh, M.D. • Family Practice • Mercy Medical Offices • 199 Lake Street • Dallas, PA • 675-4995

Jewelcor travel

<p>ANNUAL COLUMBUS DAY LAS VEGAS OCTOBER 7-11, 1990</p> <p>THE NEW MEDIEVAL EXCALIBUR \$439 BALLY'S \$539 "SUPER DELUXE" MIRAGE \$599</p> <p>LIMITED SPACE - INCLUDES -</p> <ul style="list-style-type: none"> • Round-trip from AVOCA on USAIR • Round-trip airport hotel transfers • Hotel accommodations including tax & baggage handling • Show Guide • Rates Per Person Double Occupancy 	<p>THANKSGIVING AT SEA</p> <p>NOVEMBER 17-24, 1990</p> <p>M/S SOVEREIGN OF THE SEAS</p> <p>UNBELIEVEABLE PRICE MUST PHONE FOR DETAILS</p> <p>Includes:</p> <ul style="list-style-type: none"> • Round-trip air from AVOCA to Miami • Round-trip Airport/port transfers • Cabin (inside or outside available) • All meals on board • Entertainment on board • Port charges <p>PORTS OF CALL: ST. THOMAS SAN JUAN NASSAU</p>	<p>NOTRE DAME AT U.S.C.</p> <p>NOV. 21 to 25, 1990</p> <p>EARLY BIRD SPECIAL \$649 Per Person</p> <p>Includes:</p> <ul style="list-style-type: none"> • Round-trip from AVOCA • Deluxe Sheraton Longbeach - 4 nights • Hotel tax & baggage handling • Round-trip Airport/Hotel Transfers • Round-trip Hotel/Game Transfers <p>Game tickets available for purchase from Jewelcor Travel for \$25.00</p> <p>*After July 31, 1990 - \$689</p>
<p>GO ANYDAY... DISNEYWORLD/ORLANDO ONE WEEK DEPARTURES FROM \$385*</p> <p>Includes:</p> <ul style="list-style-type: none"> • Round-trip air from AVOCA • Hotel & hotel tax • Car rental - 1 week • Birnbaum Book • Tote bag <p>*Restrictions apply. Price per person. Double occupancy</p>	<p>NEW ORLEANS OCT. 25-28, 1990</p> <p>\$389* Per Person</p> <p>Includes:</p> <ul style="list-style-type: none"> • Round-trip air from AVOCA on USAIR • 3 nights hotel: Days Inn downtown • Hotel occupancy tax • Round-trip airport & hotel transfers <p>*Early Bird Special good thru Aug. 1, 1990</p>	<p>REYKJAVIK, ICELAND ANNUAL PRE-CHRISTMAS SHOPPING TOUR NOVEMBER 2-6, 1990</p> <p>ONLY \$575 per person</p> <p>Includes:</p> <ul style="list-style-type: none"> • Round-trip air from JFK on Iceland Air • First-class accommodations at Hotel Loftleider • Continental breakfast daily • Round-trip transfers between Airport and Hotel • Reykjavik city sightseeing tour • Light lunch with fashion show • All hotel Taxes • Other discounts available on Excursion Tours <p>OPTIONAL TOURS:</p> <ul style="list-style-type: none"> • Golden Triangle Tour • Cultural City Tour • Contemporary Reykjavik Tour • Western-Inland Tour

EDWARDSVILLE
Gateway Shopping Center
Edwardsville, PA 18704
717-288-9381
or 1-800-333-3072

WILKES-BARRE
Jewelcor Center
100 N. Wilkes-Barre Blvd.
Wilkes-Barre, PA 18773
717-829-6222
or 1-800-333-3078

SCRANTON
Route 6
(In Jewelcor Store)
Scranton, PA 18508
717-342-0245/489-7568
or 1-800-333-3074

WILLIAMSPORT
201 Basin Street
Williamsport, PA 17701
717-326-7445
or 1-800-333-3076