

SPORTS

Strikes & Spares

A lone report turned in by the **Friday Night Special League** showed the Nutcrackers taking three from Kandelite led by B. Mitchell's 512 and Irene Katyl's 177 despite their opponents M. Gebhardt hitting 558 and B. Gebhardt rolling 214 (579).

In the **Ladies Country League** Grotto Pizza dropped from first place when they lost four points to Back Mountain Bowl whose K. Scavone knocked down pins for 179 (505) and M. Faux rolled 177 (474). E. Roberts 171 (489) was high for Grotto. Fashion Vending took all from G.H. Harris paced by D. Garnett's 488 and J. Haefele's 182 (480) and Faux Inn took three from Castlettes sparked by L. Cyphers 198 (491). L. Evans rolled 178-183 (490) for the Castle team.

Rich's 507 paced Noctur De Force to three points from the Eagles in the **Sunday Night Mixed League** and the Saints dropped three points to Twice Shy. John's 209 (529) showed the say for the Destroyers 2-2 split with the Toads.

The Pinheads shut out Wild Pins and Alley Cats blanked Taft Market in the **Native Textiles League**. D. Swan chalked up 533, E. Smith hit 559 and D. Williams posted 541. Shirley Teetzel pounded the pins for 180-214 (579). Roadrunners copped three from the Beerbowlers paced by Dianna DeRemer's 181-200 (525) and the Hopeless Cause picked up three from the Sandbaggers who had T. Williams 175 (479) and Carline Anthony's 189. Bad News Bowlers earned three from the Ballbusters aided by R. Clemow's 542, Bea Clemow's 176

(485) and Tammy Muntz' 178.

In the **Back Mountain Church League** East Dallas took four from Dallas sparked by L. Reeves 213 (569). R. Stair posted 219 (537) and G. Kohli added 531 for the losing team. T. Doughton hammered the pins for 232 (615) to lead Shavertown B to three points from Shavertown A and T. Oney tumbled pins for 216 (604) to lead Centermoreland to four points from Orange. F. Cornell added 532. B. Sudar's 516 was high series for Orange.

The Barn Cats shut out the Mules in the **Back Mountain Farmers League** paced by R. Titus' 210 (554) and the Longhorns picked up three from the Turkeys aided by B. May's 174 (492) and P. Coolbaugh's 180. A.

Hospodar hit 170 for the Turkeys. Thoroughbreds copped three from the Ugly Ducklings with neither team posting high scores and the Black Sheep took three from the Chickies paced by M. Delaney's 244 (552) and B. Lathrop's 525. R. Rood's 505 was high for the Chickies.

In the **Gang League** Mickey took four from Chubby aided by Linda Lukasavage's 177 and D. Bevan's 505. Stymie picked up three from Spike paced by T. Considine's 215 (515) and Alfalfa copped three from Buckwheat led by D. Jenkins 520 and J. Baines 216. Donna Pincofski's 187 was high for Buckwheat. Spanky took three from Butch and Porky managed 21/2 points from Wheezer sparked by J. Leary's 512. B. Bolton rolled 538 for Wheezer.

S.U. HOME BUILDERS

50 Years of Quality Building Experience

Wilkes-Barre Office

1258 Route 315, Kalman Bldg., Wilkes-Barre, PA 18702

824-2456 or 655-3737

Pocono Area Office Route 940, Pocono Summit, PA 18634

646-1767

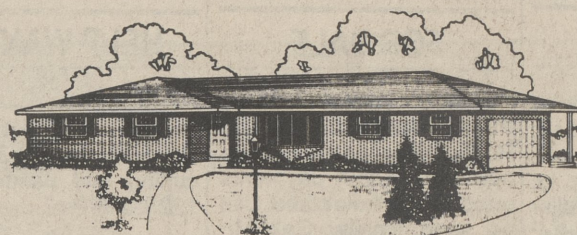


"The Pembroke" - Living area, 1832 square feet. 3 bedrooms, 2 1/2 baths, eat in kitchen, 2 car garage

- HOMES AVAILABLE FOR INSPECTION -
Open daily 9 a.m.-5 p.m. • Sat. & Sun. 12 noon-5 p.m.
Evenings by appointment

Stan Urbanski Homes
A Name You Can Trust

CUSTOM BUILT ON YOUR LOT (NOT PRE FAB OR MODULAR)

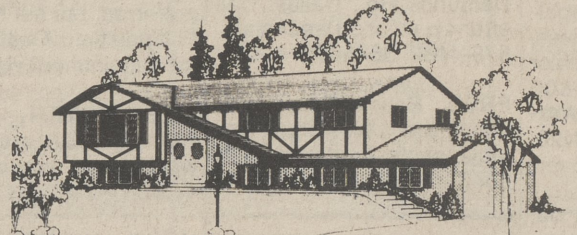


THE CHELSEA I

MODEL HOME ON DISPLAY

\$71,800 - 70' x 32' • all brick •

two car garage • covered rear porch sunken LR • laundry area off hall bath • 3 BR's • 15' master BR features full bath & walk in closet • formal DR large eat-in kitchen



THE CAMBRIDGE IV

MODEL HOME ON DISPLAY

\$64,450 - 56' x 28' bi-level -

UPPER LEVEL - LR • DR • eat-in kitchen 3 BR's • Full bath -
LOWER LEVEL - 24' family room 4th BR • 1/2 bath
• laundry room oversized two car garage
2004 SQ. FT. LIVING AREA

Call or write for free brochure & price sheet
655-3724 • 1333 Rt. 315, Wilkes-Barre, PA 18702

FEATURES

Steel Support Beam, Anderson Windows, All Exterior Plywood Sheathing, Ceramic Tile Baths, Birch Interior, Doors, Slate Foyer, Custom Cabinetry, Wall to Wall Carpeting, Linoleum in Kitchen, Steel Garage Doors and Many More

MODEL HOME HOURS

Daily 12 - 8 p.m.
Closed Friday
Sat. & Sun. 12 - 5 p.m.

DIRECTIONS TO MODEL HOME CENTER

Rt. 315, approx. 2 mi. north of the Wyoming Valley Mall Just past Pocono Downs Race Track



Established 1959

THE DALLAS POST

CLASSIFIED

AUTOMOBILES

'86 FORD EXP. Must sell. PS/PB, cruise, tilt, front wheel drive, \$3,500 negotiable. 298-2509. 10-4-P

1988 GMC JIMMY 4x4, 4.306 eng. every available option, Timberline pkg. 25,000 miles. Exc. cond. 675-6522 or 829-3777 before 5. 10-4-P

Turn your old car into cold cash. 20 words, 4 weeks only, \$7.00. 675-5211. 36-tfn-P

GOVERNMENT SEIZED vehicles from \$100. Corvettes, Chevys, Porsches, and other confiscated properties. For Buyers Guide 1-(800) 448-2562 ext 6950. Also open evenings and weekends. 13-1-P

TRUCKS

1977 SCOUT II, needs work. \$500 or best offer. 287-3766. 12-3-P

AUTO PARTS

1 SET CHROME MAGS for 15" rim \$100; 1 set Kelly Charger radials, 15" asking \$100. 10-4-P

1975 DODGE DART Slant 6 engine, \$100. 675-1525 before 9 or after 5. 11-4-P

1 SET KELLY CHARGER RADIALS. 15 in. 215-70's \$100. 287-5443. 12-4-P

RENTALS

2 BEDROOM MOBILE HOME, no pets, references, security required. 333-4944. 10-4-P

RUSTIC COUNTRY HOUSE, maintenance free overlooking pond & near Golf Course 6 miles from Dallas, Centermoreland area. 2 bedrooms, bath and other spare rooms, large outdoor decks, woodburning stove, perfect for retired or professional couple. 1 year lease \$450/month plus utilities. No pets. 333-5226. 13-5-P

Buy It • Sell It • Find It
With a Classified Ad in
The Dallas Post



Tear this up.

DRIVE THE 900 TURBO, and turn the back roads into your personal playground. That kind of magic is brought to you by a powerful 16-valve intercooled turbocharged Saab engine and Saab's road-handling

front-wheel drive. Safety is supplied by Saab's anti-lock brakes, driver's side air bag and tough roll-over protection. Comfort is almost sinful. You ought to drive it. It's even better than it sounds.

SAAB

The most intelligent cars ever built.

KUNKLE MOTORS

(JUST OFF ROUTE 309, A FEW MILES NORTH OF DALLAS)

R.D. #1, Dallas • Kunkle 675-1546

FRONT WHEEL DRIVE NEW 1989 Dodge Colt GT 3 Door Hatchback



- 1.5 Liter 4 Cyl. Engine
- Automatic Transmission
- Air Conditioning
- Tinted Glass
- AM/FM Stereo
- Dual Reclining Bucket Seats
- Power Steering
- Carpet Floor Mats

- Styled Wheels
- Halogen Head Lamps
- Electric Rear Defogger
- Locking Fuel Filler Door
- Stainless Steel Exhaust
- Motorized Front Passive Restraint System
- Trip Odometer
- Cut Pile Carpeting

List Price
W. B. Disc.
& Rebate

\$11,024

-2025

\$8999*

*Rebate Applied, Tax & Tags Extra

2150 EMUS DRIVE
PHOENIX
HAWKER TWP.
WILKES-BARRE, PA

WILKES-BARRE Dodge

823-1120 • 735-2110

OPEN
Mon. thru Fri.
8:30 A.M. 'til 9 P.M.
Saturday
8:30 A.M. 'til 5 P.M.

WE WILL NOT BE KNOWINGLY UNDERSOLD

B.A.C.K M.O.U.N.T.A.I.N

Real Estate

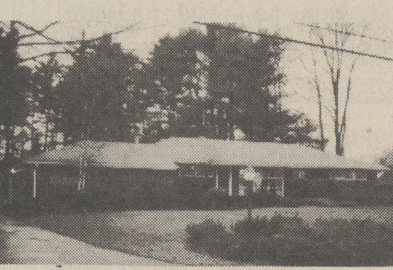
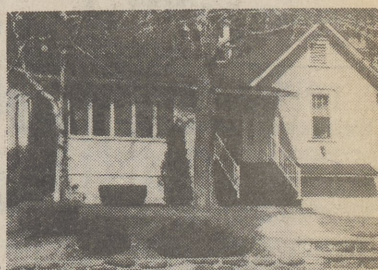


Phone 675-4663
675-HOME

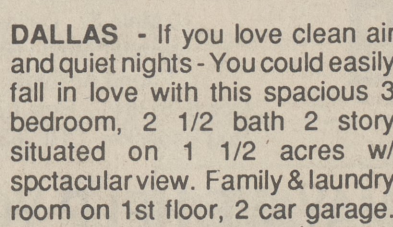
M. GRIFFIN - REAL ESTATE -

Rte. 415 Memorial Highway
Dallas, PA 18612

HARVEYSLAKE - A world of fun lies outside the door of this sun-splashed 2 bedroom, lakefront property with dock. Just steps away you'll find fishing, swimming, and boating. Special touches like beamed ceilings & beautiful woodwork inside. Call Mary..... \$149,900.



DALLAS - New Listing! Stately & spacious brick front ranch features 3 bedrooms, 1 1/2 baths, 1st floor family room w/ fireplace. Floor to ceiling windows in living & dining room. Gas hot water heat, 2 car garage, almost 1/2 acre lot. Call Mary..... \$134,900



DALLAS - If you love clean air and quiet nights - You could easily fall in love with this spacious 3 bedroom, 2 1/2 bath 2 story situated on 1 1/2 acres w/ spectacular view. Family & laundry room on 1st floor, 2 car garage. New Price..... \$98,900

WANTED: LAND in Shavertown (Jackson Twp.) 10 acre minimum. Call Mary.
LIST WITH US...WE GET RESULTS! 675-4663 or 675-HOME CALL ANYTIME!