

# SPORTS

# THE DALLAS POST CLASSIFIED

## Strikes 'n' spares

Carol I. Smith rolled 198-181-172 (551) to lead Fashion Vending in splitting 2-2 with the Castlettes in the Ladies Country League. Carol A. Smith hit the pins for 193 (499) to set the pace for G.H. Harris' three points from Back Mountain Bowl whose Michelle Faux tumbled pins for 183. Faux Inn took three from Grotto Pizza led by Diane Scavone's 179 and Helen Dickinson's 178. Libby Cyphers added 171 and E. Greer rolled 170.

In the Back Mountain Church League Orange dropped three points to Shavertown B whose W. Rood hit 541 and Maple Grove picked up two and a half points from Dallas paced by T. Oney's 539. R. Fielding posted 219 (559) for the Dallas team. C. Kazokas hit 597 and T. Doughton rolled 519 enough for their team to split 2-2 with their opponent whose L. Reeves knocked down pins for 210 (522).

Buckwheat blanked Wheezer in Our Gang League aided by F. Mihalick's 232 (537) and Butch shut out Mickey with no one able to hit high series. Styrie copped three from Chubby while Spike took three from Spanky led by Cathy Langan's 189 and M. Carkhuff's 175. Alfalfa and Porky divided equally with D. Jenkin's 506 high for both teams.

In the Back Mountain Farmers League the Chickies took all from the Thoroughbreds with no high scores. The Turkeys picked up three from the Black Sheep aided by D. Williams' 514 while the sheep had W. Lathrop's 518. The Mules copped three points from the Ugly Ducklings sparked by J. Grohowski's 229 (580). R. Titus knocked down pins for 212 (518) which led the way for three points from the Longhorns whose Barbara May hit 178 and L. Coolbaugh 538.

In the Charlie Williams Memorial League Monk Plumbing shut out Back Mt. Bowl, Roth Novelty took four from Jedidia's and Back Mt. Auto Body

Shop blanked G.H. Harris. Cross Country Restaurant took three from Offset Paperback while Varsity Lawn Care copped three from Mountain Stream Construction. High scorers were G. Bobb 214 (582), E. Harris 236 (562), B. Bolton 562, T. Considine 538, F. Tregan 529, D. Moore 237 (533), M. Bevans 233 (538), B. Searfoss 233 (555), L. Wolfe 556, D. Doty 529, J. Yonchick 539, S. Wickard 554, R. Harned 545, R. Andrasko 558, S. Vigorito 540 and Jarrett Roan 525.

Later in the same league Cross Country shut out G.H. Harris, Back Mt. Bowl blanked Offset Paperback, Mountain Stream took four from Varsity Lawn Care.

The members hit higher scores in the second round with F. Tregan 229 (607), R. Considinge 216 (552), P. Thomas 524, B. Hospodar 234-221 (603), L. Coolbaugh 223 (586), R. Harris 246 (581), B. Searfoss 579, E. Harris 545, R. Herron 546, S. Wickard 232, K. Orkwis 614, S. Vigorito 582, J. Brady 550 and F. Cornell 533.

In the Sunday Night Couples League Booth's shut out Wilson's led by J. Booth's 530 and Shavertown all from Moore's paced by H. Shaver's 224-241 (642). Niceteam made it three from Matthews led by B. Harris' 216 (583).

Two weeks of bowling in the Friday Nite Special League had the Ballbusters take three from the Nite Shift and also three from the Nutcrackers. Brew Crew shut out the Nutcrackers and picked up four by a forfeit from Charles Angels. Charles Angels also forfeited four points to Kandlelite, who dropped three to the Nite Shift. High rollers were S. Spencer 526, 591; Essie Brady 178 (475), 474; M. Gebhardt 523; Joyce Gebhardt 172; M. Youells 502; D. Earles 222 (571).

In the Sunday Night Mixed League Twice Shy picked up four from the Toads, Noctur de Force copped three from the Destroyers and the Eagles copped three from the Saints. High games were by Larry 520, Lon 219 (541) and Joe 517.

## S.U. HOME BUILDERS

50 Years of Quality Building Experience

Wilkes-Barre Office

1258 Route 315, Kalman Bldg., Wilkes-Barre, PA 18702

824-2456 or 655-3737

Pocono Area Office Route 940, Pocono Summit, PA 18634

646-1767

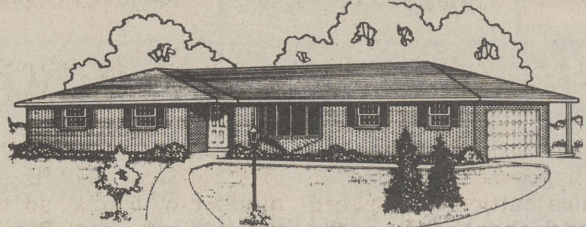


"The Pembroke" - Living area, 1832 square feet. 3 bedrooms, 2 1/2 baths, eat in kitchen, 2 car garage

Stan Urbanski Homes  
A Name You Can Trust

HOMES AVAILABLE FOR INSPECTION -  
Open daily 9 a.m.-5 p.m. • Sat. & Sun. 12 noon-5 p.m.  
Evenings by appointment

## CUSTOM BUILT ON YOUR LOT (NOT PRE FAB OR MODULAR)

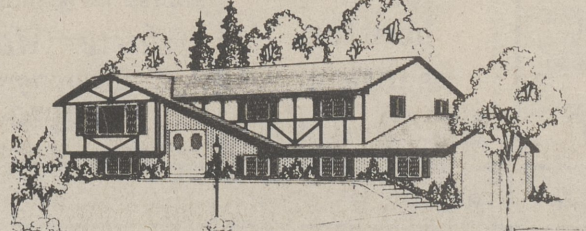


### THE CHELSEA I

MODEL HOME ON DISPLAY

\$71,800 - 70' x 32' - all brick •

two car garage • covered rear porch sunken LR • laundry area off hall bath • 3 BR's • 15' master BR features full bath & walk in closet • formal DR large eat-in kitchen



### THE CAMBRIDGE IV

MODEL HOME ON DISPLAY

\$64,450 - 56' x 28' bi-level •

UPPER LEVEL - LR • DR • eat-in kitchen 3 BR's • Full bath • LOWER LEVEL - 24' family room 4th BR • 1/2 bath • laundry room oversized two car garage 2004 SQ. FT. LIVING AREA

Call or write for free brochure & price sheet

655-3724 • 1333 Rt. 315, Wilkes-Barre, PA 18702

### FEATURES

Steel Support Beam, Anderson Windows, All Exterior Plywood Sheathing, Ceramic Tile Baths, Birch Interior, Doors, Slate Foyer, Custom Cabinetry, Wall to Wall Carpeting, Linoleum in Kitchen, Steel Garage Doors and Many More

### MODEL HOME HOURS

Daily 12 - 8 p.m.  
Closed Friday  
Sat. & Sun. 12 - 5 p.m.

### DIRECTIONS TO MODEL HOME CENTER

Rt. 315, approx. 2 mi. north of the Wyoming Valley Mall just past Pocono Downs Race Track



BETTER HOMES FOR BETTER LIVING

Established 1959

### FOR SALE

**CAPTAINS STORAGE BEDS** - Solid pine construction with 3 spacious drawers. \$169 unfinished. Furniture Options LTD, Pine Mall Plaza, W-B. 823-3488. 9-4-P

**SOLID OAK DINETTE TABLES** - Lifetime warranty. 30 inches round or square. Only \$119. Furniture Options LTD, Pine Mall Plaza, W-B. 823-3488. 9-4-P

**LADIES GREY TRENCH COAT**, new, sz. 14, \$16; Basset dresser, 2 yrs. old, \$55; boys Levi jacket, sz. lg, \$10; new girls shoe roller skates \$8. 288-5089. 10-4-P

**3 PC. FRENCH PROVINCIAL LIVINGROOM SUITE**, mauve/green, new \$800; 2 fruitwood leather top/cane end tables like new, \$100 ea.; solid oak dinette set, 6 mos. old, Pd. \$800 sell \$400. 823-4282. 10-3-P

**50 BLOUSES**, skirts, sweaters, jackets, sz. 10-12. 50¢ to \$1.00. Famous labels. Some new. 283-1732. 10-4-P

**ZENITH PERSONAL COMPUTER**, IBM compatible, Dual 5 1/4 floppy drives, 512K RAM; Zenith 13" color monitor, Epson LX-800 printer, two years old. Asking \$1,200. Call 639-2420.

### FOR SALE

**FRUIT TREES**, \$5.00 ea. Dwarf, semi dwarf, full size. All varieties. Call now 298-2001. 11-3-P

**SUIT** - boys-6, w/tags \$10; boys-10 Dockside's, \$5; BS uniform, neck 13, \$10; 16-lb. Bowling ball \$10. 675-3733. 11-4-P

**For Sale: Spinnet-Console Piano Bargain.** Wanted: Responsible party to take over low monthly payments on spinnet-console piano. Can be seen locally. Call Mr. White at 1-800-247-3345 EXT. 101. 11-3-P

**SEARS PORTABLE DISH-WASHER.** Exc. cond. \$75. 696-1434 after 5 p.m. 11-4-P

### ANTIQUES

**WASHSTAND** - beautiful medium tone, wood-2-drawers/2-doors \$275/BO; cups/saucers, Iris/Violets \$10 ea. 675-3733. 11-1-P

### AUTO PARTS

**1 SET CHROME MAGS** for 15" rim \$100; 1 set Kelly Charger radials, 15" asking \$100. 10-4-P

**1975 DODGE DART** Slant 6 engine, \$100. 675-1525 before 9 or after 5. 11-4-P

### AUTOMOBILES

**1984 BUICK REGAL LIMITED**, 4 door sedan. Power everything. Garage kept, incl. set of studded snows, built in CB, \$2,950. 696-2775. 8-4-P

**Turn your old car into cold cash.** 20 words, 4 weeks only, \$7.00. 675-5211. 36-tfn-P

**'86 FORD EXP.** Must sell. PS/PB, cruise, tilt, front wheel drive, \$3,500 negotiable. 298-2509. 10-4-P

**1988 GMC JIMMY 4x4**, 4,306 eng. every available option, Timberline pkg. 25,000 miles. Exc. cond. 675-6522 or 829-3777 before 5. 10-4-P

### RENTALS

**TRUCKVILLE MANOR.** Housing for the elderly and handicapped. Modern residential apartments. Heat, maintenance provided. Security system. For application or appointment call Donna Holman, 696-1201 or 596-1118. Equal Opportunity Housing. 9-4-P

**2 BEDROOM MOBILE HOME**, no pets, references, security required. 333-4944. 10-4-P

### MOBILE HOMES

**1982 BURLINGTON**, 14x70, exc. cond. large livingroom, kitchen, appliances, 2 bedrooms, 2 baths, screened patio, enclosed porch, shed, \$23,000. 675-6401. 10-6-P

### LAWN EQUIPMENT

**TROY BILT TILLER** Kohler engine 7-HP. Cash only. 696-1810. 11-3-P

HELP CLEAN YOUR SEPTIC TANK the EASY WAY with FX bacteria. \$9.95. Tree Roots removed. Drains opened. Ask for FREE BOOKLET.

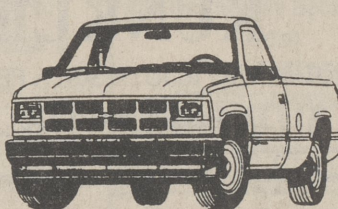
Dallas Agway  
36 Mill St.  
Dallas, Pa., 18612

**Building Materials**  
For Sale Below Wholesale Cost  
Call 735-4800  
Mon. thru Fri. 9 - 4

## ALL PURPOSE TRUCKS

### '90 CHEVROLET

C-1500 PICKUP  
\$750 Rebate

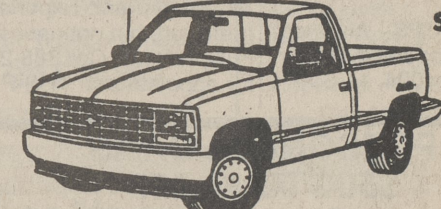


WT FULL SIZE

4.3 L EFI V-6 Engine, Automatic Transmission, Power Steering, Power Brakes, Cloth Seats, Special Price

\$10,290\*

### '90 CHEV. K-1500 4x4



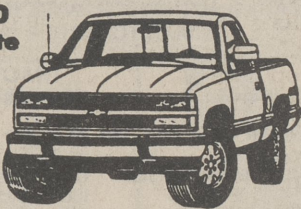
SHORT BOX

Stock No. 1209, Silverado, AIR CONDITIONING, 5-Speed Manual Transmission, Tilt Steering Wheel, Speed Control, Chrome Rear Step Bumper, And Lots, Lots More!

\$750 Rebate  
\$13,590\*

### '90 CHEV. K-1500 4x4

\$750 Rebate

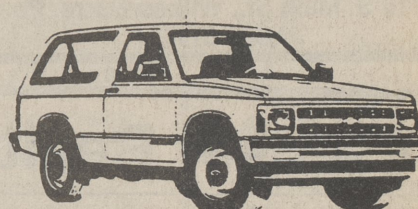


\$1886 P.E.G. SAVINGS!

Stock No. 1176, 5.0 L EFI V-8 Engine, AIR CONDITIONING, Scramble Package, Chrome Rear Step Bumper, Tilt Steering Wheel, Cruise Control, AM/FM Stereo w/Cassette, Sliding Rear Window, 5-speed Manual Trans, w/OD, Power Steering, Power Brakes, And Lots More!

\$13,890

### '91 CHEV. S-10 BLAZER 4x4



Stock #1112, Tahoe Pkg., Auto. Trans., AM/FM Stereo, & Lots More

\$14,590\*

\* All Rebates applied including GMAC 1st Time Buyer Rebate of \$600 to applicable models. Eligibility of 1st Time Buyer is determined by GMAC. Taxes, Tags Additional Subject to prior sale

OPEN MON.-FRI. 8:30 A.M. 'til 9 P.M. SATURDAY 8:30 A.M. 'til 5 P.M.

**VALLEY CHEVROLET/GE**  
601 Kidder St., Wilkes-Barre, Pa. 821-2772

INSTANT ON THE SPOT DELIVERY! BRING YOUR TITLE!

WE WILL NOT BE KNOWINGLY UNDERSOLD

## B.A.C.K.M.O.U.N.T.A.I.N

# Real Estate



## M. GRIFFIN REAL ESTATE

Phone 675-4663  
675-HOME

Rte. 415 Memorial Highway  
Dallas, PA 18612

**HARVEYS LAKE** - New Listing! Perennial Perfection describes this sparkling 2 bedroom Lakefront property with dock. Packed with custom touches like: beamed ceilings, beautiful woodworking, wainscoting plus stone fireplace in living room. Offers 1-car garage, large deck, move-in condition. Call Mary.....\$149,900.

**SHAVERTOWN** - (Rose Village) New Listing! Six year young 2 story offers 3 bedrooms, 2 1/2 baths featuring 9x11 bath with large whirlpool & stall shower. Beautiful wraparound deck w/spectacular view, 1 car garage, plus fenced in rear yard. Call Mary.....\$119,900.

**DALLAS** - New Listing! Unbeatable Value! You couldn't build this 4 bedroom home for this price. Offers eat-in kitchen, spacious living room, LL family room, 1 car garage, gas heat. Truly a great family home & location. Call Sandy.....\$79,900.

**DALLAS** - Self storage unit business with over 2 acres. Steel storage buildings in excellent condition. Zoned Industrial. Ideal part time business. Call Sandy.....\$289,500.

**DALLAS** - With summer just around the corner - Buy this house and be swimming in your inground pool by Memorial Day! Have the family picnic here - 4 bedrooms, 2 1/2 baths, family room, eat-in kitchen w/custom cabinets. Parking for the whole family. Call Deborah.....New Price \$129,900.

**WANTED: Land in Shavertown**  
(Jackson Twp.)  
10 acre minimum. Call Mary.

LIST WITH US...WE GET RESULTS! 675-4663 or 675-HOME  
CALL ANYTIME!