

Sell It  
Through A Friend!

Monday - Friday  
9:00-5:00 p.m.

THE DALLAS POST

# CLASSIFIED

Call  
675-5211

Buy • Sell • Trade  
Rent • Hire

## LEGAL NOTICES

NOTICE OF SERVICE OF PROCESS BY PUBLICATION  
NORTH CAROLINA  
MECKLENBURG COUNTY  
IN THE GENERAL COURT OF JUSTICE  
JUVENILE DIVISION  
90-J-80

In Re: David Michael Britton  
TO: The unknown father of David Michael Britton, a male child born on or about April 17, 1987, in Kingston, Pennsylvania, Luzerne County.

Please Take Notice that a Petition seeking termination of your parental rights and obligations to the above-named child, born on April 17, 1987, in Luzerne County, Pennsylvania, has been filed against you.

You are required to file a written answer to the Petition within 30 days following the first publication date, which appears below. Upon failure to do so, your parental rights, if any, will be terminated at a hearing in Juvenile Court, Mecklenburg County Courthouse, Charlotte, North Carolina, immediately following said 30 day answer period or as soon thereafter as the matter can be heard.

You are entitled to be represented by counsel, court-appointed if you are indigent, provided you request counsel at or prior to said hearing.

Kenneth C. Martin  
Grandy & Martin  
2219 Park Road  
Charlotte, North Carolina 28203  
(704) 376-4303  
March 7, 1990  
9-3-P

## LEGAL NOTICES

## RENTALS

**PASTURE FOR RENT** - all or part of 17 acres, Beaumont. 639-3245. 7-4-P

**TRUCKSVILLE MANOR.** Housing for the elderly and handicapped. Modern residential apartments. Heat, maintenance provided. Security system. For application or appointment call Donna Holman, 696-1201 or 596-1118. Equal Opportunity Housing. 9-4-P

**2 BEDROOM MOBILE HOME,** no pets, references, security required. 333-4944. 10-4-P

## FREE

**FREE** Horse manure. Upper Demunds Rd., Dallas. Call after 4 p.m. or on weekends. 675-4182. 36-tfn-P

**FREE** beige and tan floral print rocker/recliner. Good cond. 696-2958. 8-4-P

## AUTOMOBILES

**1966 LINCOLN CONTINENTAL,** all power, vinyl roof, second owner, soon an antique, exc. cond. Relocating. \$3500 negotiable. 829-6718. 7-4-P

**1973 CHEVROLET CAPRICE,** good work car, runs good, \$300. Call after 5 p.m. 675-3044. 8-3-P

**1984 BUICK REGAL LIMITED,** 4 door sedan. Power everything. Garage kept, incl. set of studded snows, built in CB, \$2,950. 696-2775. 8-4-P

**Turn your old car into cold cash.** 20 words, 4 weeks only. \$7.00. 675-5211. 36-tfn-P

**'86 FORD EXP.** Must sell. PS/PB, cruise, tilt, front wheel drive, \$3,500 negotiable. 298-2509. 10-4-P

**1988 GMC JIMMY 4x4,** 4,306 eng. every available option, Timberline pkg. 25,000 miles. Exc. cond. 675-6522 or 829-3777 before 5. 10-4-P

## AUTO PARTS

**1 SET CHROME MAGS** for 15" rim \$100; 1 set Kelly Charger radials, 15" asking \$100. 10-4-P

## LOST & FOUND

**LOST** - Men's glasses, vicinity of Machell and Sterling Ave., Dallas. 477-3421. 7-4-P

**LOST** - Walker Coon dog, black & white. Answers to Sniffer. '89 license. Lost in vicinity of Beaumont and Centermoreland. 675-8241. 8-4-P

**BRITTANY SPANIEL,** Chase Corners area. Answers to Rocket. 696-1598. 8-4-P

## RECREATION

**1985 CELEBRITY** with 140 Merc Cruiser. 17 ft. bow rider. Burgundy/cream. Custom EZ loader trailer. Exc. cond. \$7300. 639-2141. 8-3-P

**1989 18 FT. 181 CELEBRITY,** bow rider, 130 h.p. Merc. w/custom trailer. 15 hrs. running time. \$11,050. 823-3474. 8-3-P

## MOBILE HOMES

**1982 BURLINGTON,** 14x70, exc. cond. large livingroom, kitchen, appliances, 2 bedrooms, 2 baths, screened patio, enclosed porch, shed, \$23,000. 675-6401. 10-6-P 8-4-P

## PERSONAL

**A BANKRUPTCY DIVORCE - \$175** Accidents. Payments accepted. Atty. Jim Beatrice, Rt. 309, Dallas. Call 675-3600. In Pittston, 49 S. Main St., Call 655-3100. Plus Costs. 41-tfn-P

**DIVORCE \$150** + court costs. FREE CONSULTATION No travel required. Reisman Law Offices 1-800-345-4070. 44-tfn-P

## TELEMARKETING

We need one or two good people Mon.-Thurs. evenings. Call from our office in Dallas. Salary plus commission The Dallas Post 675-5211

## FOR SALE

**AFGHANS** assorted patterns, large size, \$100. 675-5139. 8-3-P

**RECONDITIONED TELEVISIONS.** Portable color starting at \$29.95, 25" consoles starting at \$49.95. Lee's TV. 288-9670. 8-3-P

**Something you want to sell quickly and at a low cost?** Call The Dallas Post. 675-5211. 36-tfn-P

**CAPTAINS STORAGE BEDS** - Solid pine construction with 3 spacious drawers. \$169 unfinished. Furniture Options LTD, Pine Mall Plaza, W-B. 823-3488. 9-4-P

**SOLID OAK DINETTE TABLES** - Lifetime warranty. 30 inches round or square. Only \$119. Furniture Options LTD, Pine Mall Plaza, W-B. 823-3488. 9-4-P

**LADIES GREY TRENCHE COAT,** new, sz. 14, \$16; Basset dresser, 2 yrs. old, \$55; boys Levi jacket, sz. lg, \$10; new girls shoe roller skates \$8. 288-5089. 10-4-P

**3 PC. FRENCH PROVENCIAL LIVINGROOM SUITE,** mauve/green, new \$800; 2 fruitwood leathertop/cane end tables like new, \$100 ea.; solid oak dinette set, 6 mos. old, Pd. \$800 sell \$400. 823-4282. 10-3-P

**50 BLOUSES,** skirts, sweaters, jackets, sz. 10-12. 50¢ to \$1.00. Famous labels. Some new. 283-1732. 10-4-P

**HELP CLEAN YOUR SEPTIC TANK** the EASY WAY with FX bacteria. \$9.95. Tree Roots removed. Drains opened. Ask for FREE BOOKLET. Dallas Agway 36 Mill St. Dallas, Pa., 18612

**Deja Vu Boutique**  
The Bay Window  
Shavertown  
675-6400  
Look like a million in Someone else's million Ladies & Misses Consignment Designer Clothing Buy or Rent a Prom Gown

**ADOPTION**  
We look forward to the joys and challenges of parenting as we seek to adopt an infant. We offer love, a happy and stable home, and financial security. Let us help each other... Call Patrick and Robin collect (203) 742-1848 or call our adoption advisor (802) 235-2312

**ARTIST**  
Lettering and Graphics  
Truck and Boats  
Custom Air Brush  
Hand-Painted Signs  
287-4809

## ADOPTION

**ADOPT,** Loving couple with so much to give, wish to adopt infant. Expenses paid, call collect (516) 758-8427 Karen & Bob. 10-8-P

## PETS

**BOUVIER PUPPIES,** AKC international champion sired. Cropped and docked. Available now. 654-1822. 9-3-P

## MISCELLANEOUS

**STEEL BUILDINGS** - Factory overstock, all sizes must go. 40x60, 25x30, 30x40, no reasonable offer refused. 6 months free storage. Call Adam 1-800-527-4044. 7-4-P

## Public Auction

Sat. March 24th

Inventory reduction auction for  
**Bartron Supply Inc.**  
Rt. 92 Tunkhannock, PA.

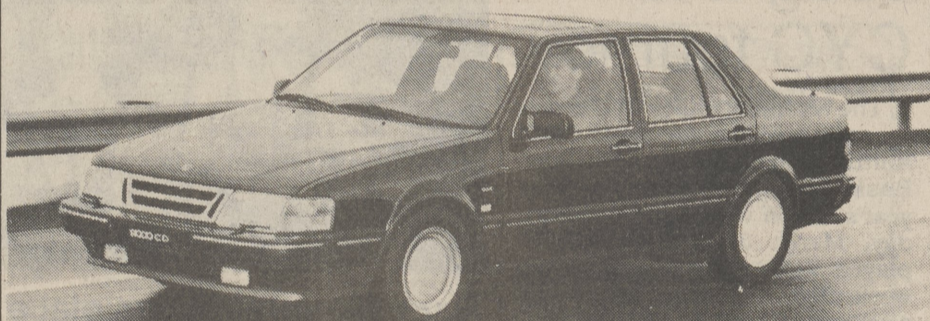
J.D. Dealer - Farm tractors and machinery, lawn & garden. Quality Consignments will be accepted to this sale. Call for information:

(717) 836-4011  
(607) 642-3293

Sale by  
**Goodrich Auction**

Service, Inc.  
Rt., 38 & 38 B

Newark Valley, NY 13811  
(607) 642-3293



**Safer than Volvo in Sweden.  
Safer than Volvo here.  
Safer than Volvo period.**

For years, Volvo has led you to believe they make the safest cars you can buy. All they're missing are the facts to back it up. For years, Saab has been building safe cars. But unlike some of our competition, we have the facts to back up the claims:

**Fact #1:** In a recent study of over 900,000 accidents by Sweden's largest insurance company, Folksam, the Saab 9000 was one third safer than the Volvo 700 series, twice as safe as the average car in its class and three times as safe as the average car in all classes.

**Fact #2:** For the past five years, the U.S. Highway Loss Data Institute (HLDI), comprised of over 250 major insurance companies, rated the Saab 9000

and 900 series cars as safest in their respective classes. This study covered more than 6,000,000 personal-injury accidents.

**Fact #3:** For 1990, each and every Saab sold in America has anti-lock brakes and driver's air bag as standard equipment.

The above three paragraphs are not ad hype or mere opinion. They are the truth, the whole truth and nothing but the truth.

Period.

# SAAB

## KUNKLE MOTORS

(JUST OFF ROUTE 309, A FEW MILES NORTH OF DALLAS)

R.D. #1, Dallas • Kunkle 675-1546

### LEHMAN TOWNSHIP AUDITOR'S REPORT CONCISE STATEMENT OF REVENUES RECEIVED AND EXPENDITURES PAID

COMBINED FUNDS YEAR ENDED DECEMBER 31, 1989

Balance: January 1, 1989 \$ 71,798

Revenues Received	
Taxes-All Sources (Real Estate Assessed Valuation \$6,290,420)	\$254,057
Fines and Forfeits	3,410
Interest, Rents & Royalties	5,074
Intergovernmental Revenues	112,247
Charges for Services	14,382
Miscellaneous Revenues	61,320
<b>Total</b>	<b>450,490</b>

\$522,288

Expenditures Paid	
General Government	\$ 25,713
Public Safety	107,190
Public Works-Highway, Roads & Streets	234,095
Debt Service	13,392
Miscellaneous Expenditures	61,346
<b>Total</b>	<b>\$441,736</b>

Balance in Treasury, December 31, 1989 \$ 80,552

Auditors:

Byron H. Creasy, Chairman  
Jon H. Rogers, Auditor

## ALL PURPOSE TRUCKS

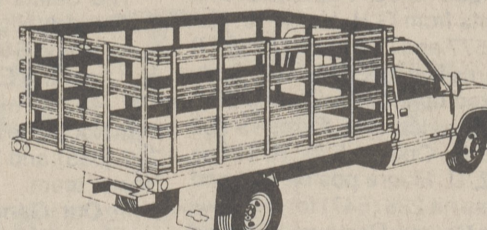
(A) '90 CHEVROLET G-30 CUBE VAN 6 AVAILABLE!



• Stock No. PT001648 • Auto. Transmission  
• 14-foot Aluminum Body • Power Steering  
• 5.7 L EFI Engine • Power Brakes

**SPECIAL PRICE NO DOWN PAYMENT!!**  
**\$17,790\*** 48 MONTHS LEASE  
**\$389<sup>90</sup>\*** Per Month

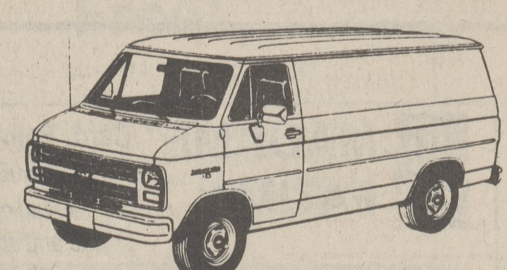
(B) '90 CHEVROLET G-3500 STAKE BODY TRUCK \$750 REBATE!



• Stock No. 1152 • Power Brakes  
• 9-foot Stake Body • And More  
• H.D. Chassis • West Coast Mirrors  
• 5.7 L EFI V-8 Engine • Rear Stabilizer Bar  
• Power Steering • 31-gal. Fuel Tank

**SPECIAL PRICE NO DOWN PAYMENT!!**  
**\$13,890\*** 48 MONTHS LEASE  
**\$294<sup>90</sup>\*** Per Month

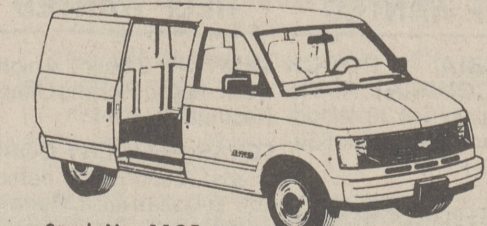
(C) '90 CHEVROLET G-10 CARGO VAN



• Stock No. 209 • Front Stabilizer Bar  
• Long Wheelbase • Glass Side & Rear Doors  
• Automatic Transmission • Passenger Seat  
• Power Steering • H.D. Power Brakes  
• Tinted Glass • Halogen Headlamps  
• 4.3 L EFI Engine • H.D. Battery  
• Interval Wipers • Rear Wheel Anti-Lock Brake System

**SPECIAL PRICE NO DOWN PAYMENT!!**  
**\$11,990\*** 48 MONTHS LEASE  
**\$249<sup>90</sup>\*** Per Month

(D) '90 CHEVROLET ASTRO CARGO VAN \$500 REBATE!



• Stock No. 1125 • Dual Mirrors  
• Automatic Transmission • Glass Rear Doors  
• Driver & Passenger Seat • H.D. Springs  
• AIR CONDITIONING • Rally Wheels  
• Radio w/Digital Clock

**SPECIAL PRICE NO DOWN PAYMENT!!**  
**\$12,990\*** 48 MONTHS LEASE  
**\$279<sup>90</sup>\*** Per Month

\*Rebates applied. First payment plus security deposit required. Closed-end Lease. Purchase option available at residual plus one payment. (A) Residual is \$4480.56. 1 Total of payments is \$14,155.20, 60,000 allowable miles; (B) Residual is \$5477.08. Total of payments is \$18,715.20, 60,000 allowable miles; (C) Residual is \$4169.10. Total of payments is \$11,995.20, 60,000 allowable miles; (D) Residual is \$4407. Total of payments is \$13,435.20, 60,000 allowable miles. Taxes, tags additional.

**OPEN MON.-FRI. 8:30 A.M. 'til 9 P.M. SATURDAY 8:30 A.M. 'til 5 P.M.**

**VALLEY CHEVROLET/GE**

601 Kidder St. Wilkes-Barre, Pa. 821-2772

**WE WILL NOT BE KNOWINGLY UNDERSOLD**

**INSTANT ON THE SPOT DELIVERY! BRING YOUR TITLE!**