

PEOPLE

Mosca to head St. Jude's Bike-A-Thon locally

Ron Mosca of Dallas has been named chairman of St. Jude's Children's Research Hospital Bike-A-Thon to be held on May 12 at Dallas High School.

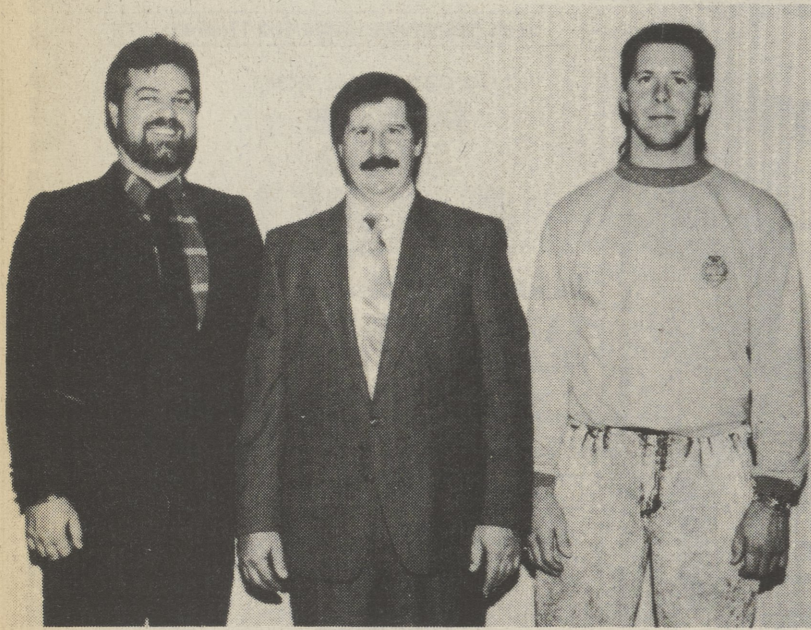
St. Jude's Children's Research Hospital was founded by entertainer Danny Thomas and opened its doors to the public in 1962 to combat catastrophic diseases which afflict our children. Thanks to St. Jude's Hospital, children who have leukemia, Hodgkin's disease, sickle-cell anemia, and other child-killing diseases now have a better chance to live.

Ron is in need of volunteers to help with the Bike-A-Thon. If you

can help please call him at 675-2238. Everything is still in the planning stages; tentative time for the ride is 9-3 and it will be a two mile closed route starting at the Dallas High School. There will be water and light refreshments along the route at designated spots.

Information and pledge sheets will be distributed through the schools and sent home with students.

Call 675-2238 to volunteer to help in this one-day event that will aid in the treatment of causes, cures and prevention of these terrible killers to children.



1990 OFFICERS- From left, David Witkowski of Northeast Ground Maintenance, Secretary/Treasurer; John J. Dulsky of Plains Nursery & Landscaping, Chairman; and Bruce Hontz of Rave's Nursery, Program Chairman.

Nurserymen elect officers

Members of the E-2 Chapter of the Pennsylvania Nurserymen's Association, Inc. installed new Chapter Officers for 1990. Inaugurated at a dinner/meeting held recently at the Best Western East Mountain Inn, Wilkes-Barre, were John J. Dulsky of Plains Nursery & Landscaping, Chairman; Bruce Hontz of Rave's Nursery, Program Chairman and David Witkowski, of Northeast Ground Maintenance, Secretary/Treasurer.

The E-2 Chapter included counties are Columbia, Lackawanna, Luzerne, Pike, Susquehanna, Wayne and Wyoming with 63 total Active Member Firms.

The Pennsylvania Nurserymen's Association was formed in the city of Lancaster in 1904 and was incorporated as a non-profit organization in 1964. Today membership is 821 active member firms statewide.

The PNA offers member relations, education/information, government affairs, marketing/promotion, professionalism, publicity/public relations, workforce development and other supportive services to its members. For membership information on PNA E-2 Chapter contact Dave Dulsky at (717) 826-0057 or PNA, Harrisburg, PA at (717) 238-1673.



EMPLOYEE OF YEAR- Paul Littleford has been named 1989 employee of the year at Offset Paperback Manufacturer's in Dallas. From left, Littleford and Michael J. Gallagher, OPM president.

Littleford named Offset's Employee of the Year

Paul J. Littleford, Maintenance Department Foreman, has been named OPM's "1989 Employee of the Year."

He was presented with an engraved mug and his name was inscribed on the Employee of the Year Plaque which is on display in the OPM trophy case.

Although he worked for OPM on a part-time basis between June 1975 and June 1976, Paul's career at OPM really began on May 9, 1977. He has progressed through various Maintenance Department positions to his current position of foreman.

A 1975 graduate of Lake-Lehman High School, Paul is also a 1977 graduate of the Williamsport Area Community College Electrical Construction Program. He has completed the Penn State University Level I and Level II Supervisory Management Development Programs and a Computer Asst. Design I & II (CAD) course at LCCC. In addition, Paul has been an active member of

OPM's Fire Brigade and Safety Committee.

An example of dedication and commitment, Paul's extra efforts, assistance, suggestions and support form the basis of exemplary standards of personal excellence and achievement. His performance is especially noteworthy when one considers the workload and projects faced by Paul and the Maintenance Department this past year.

Paul and his wife Linda also an OPM employee reside in the Harveys Lake area.

Recommendations are solicited each year from all departmental foreman, supervisors and managers. Nomination consideration includes factors such as: dependability, cooperation, attitude, creativity, performance which consistently meets or exceeds standards and accomplishments which are clearly above average. Recommendations spanned many departments and totaled eight nominations.

Professor's paper dispels coal mine-football myth

Contrary to myth, a football scholarship was not a ticket out of the coal mines for Northeastern Pennsylvania athletes in the first half of the century.

"It was the high school degree that kept a young man out of the mines," says Paul J. Zbiek, assistant professor of history at King's College.

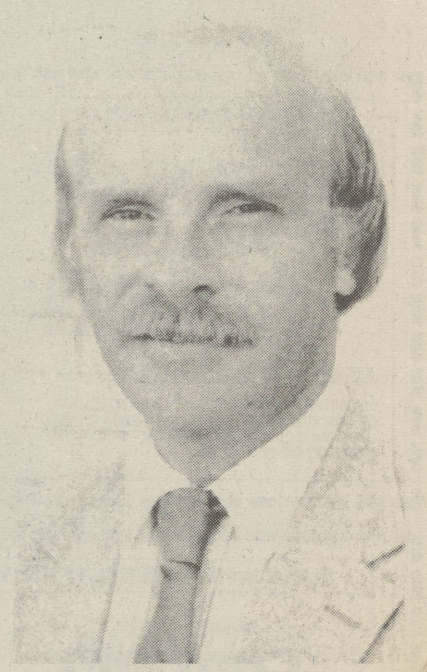
"If boys had the ambition, desire and family support needed to finish high school, they were more likely to seek employment in a safer, higher-paying venue."

Dr. Zbiek, a Shavertown resident who graduated from King's in 1973, examines the role of scholastic football in Pennsylvania's Wyoming Valley in a paper presented at a recent conference.

He says the myth about football and the mines remains widely believed both in the Keystone State and around the nation.

In the 1953 Warner Brothers film, "Trouble Along the Way," with John Wayne and Donna Reed, the success of "coach" Wayne's small college football team is attributed to emptying the coal mines of Pennsylvania and filling the roster with athletes of questionable academic ability.

Dr. Zbiek says Wilkes-Barre and surrounding Wyoming Valley towns did produce impressive



PAUL J. ZBIEK

numbers of college players (85 in 1933 alone) but evidence indicates the "dumb jock" label was unfair.

He examined records of the 1939 Plymouth High School football team and found football players more highly represented in the academic curriculum and on the honor roll than was the case with the rest of the student body.

NEED A VALENTINE???

**Stop at Fino's Pharmacy Today
Valentine's Day - Feb. 14**

Special Valentine Cards
Forget-Me-Not

For Your Loved One
Russell Stover's
Valentine Hearts

of
Chocolates

Assorted Creams, Nuts,
Chewy, Crispy Milk and Dark Chocolate
or

Jon L. Stopay

Peanut Butter Chiffon
**DON'T FORGET HER or HIM
STOP AT...**

FINO'S PHARMACY

3 Main Street, Dallas, PA • 675-1141

Penn State campus names two to admissions staff

Penn State Wilkes-Barre has named two new members to the campus Admissions staff.

John S. Barnes, Jr., of Wilkes-Barre, has been named Admissions Officer at Penn State Wilkes-Barre campus in Lehman. A campus graduate, he previously served as coordinator of the Office of Minority Programs for the College of Liberal Arts at Penn State.

Mary E. Ghilani, of Shavertown, has been named Admissions Counselor and Recruiter.

Barnes is no stranger to the Penn State system. He holds three Penn State degrees, and also has worked for the University as a counselor and advisor for the past six years.

He received an associate degree in letters, arts and sciences in 1975 from the Penn State Wilkes-Barre campus and later received a bachelor's degree in community

development at Penn State University Park. He received his master's degree in public administration in 1988.

Barnes and his wife Marcia live in Larksville.

Ghilani, formerly of Madison, Wisconsin, holds a bachelor's degree in secondary education-communicative disorders, and a master's degree in speech pathology, both from the University of Wisconsin-Madison. She has had four poems published and is currently writing children's fiction in her spare time.

She previously managed and performed resume writing services for a temporary help service in Madison.

She and her husband Charles Ghilani, Ph.D., an assistant professor of surveying technology at Penn State Wilkes-Barre, live in Shavertown.



Mary E. Ghilani

John S. Barnes, Jr.

First Hospital Wyoming Valley

A Private Psychiatric Facility

Providing comprehensive inpatient and outpatient psychiatric care to children, adolescents, adults and those individuals experiencing problems of addiction in addition to their psychiatric problems.

For More Information, Call
(717) 829-7900 or 1-800-624-9902

First Hospital Wyoming Valley
149 Dana Street, Wilkes-Barre, PA 18702

Wyoming Valley Psychiatric Associates

COMPREHENSIVE PSYCHIATRIC
OUTPATIENT SERVICES

Help for depression/anxiety, shyness,
sexual problems, marital/family conflict,
and stress management.

TREATMENT FOR ADULTS,
ADOLESCENTS AND CHILDREN

Wyoming Valley Psychiatric Associates, p.c.

149 Dana St.
Wilkes-Barre, PA.
(717) 825-6655

401 Adams Ave.
Scranton, PA. 18503
(717) 346-3686

Building #2, Jay Park
Route 209
Marshall's Creek, PA.
(717) 223-7400

Berwick Hospital Center
701 East 16th St.
Berwick, PA. 18603
(717) 759-6490