

Stock-up Sale

M·E·A·T
Simply
SENSATIONAL

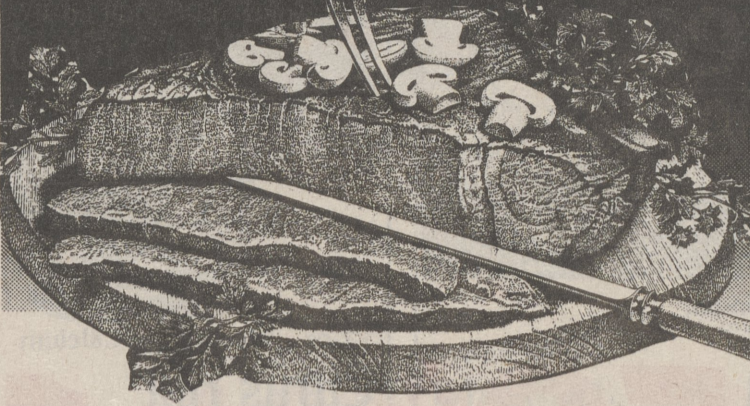
Stock up on Steaks



Fancy Trimmed
Porterhouse or T-Bone Steaks

3⁹⁹
Lb.

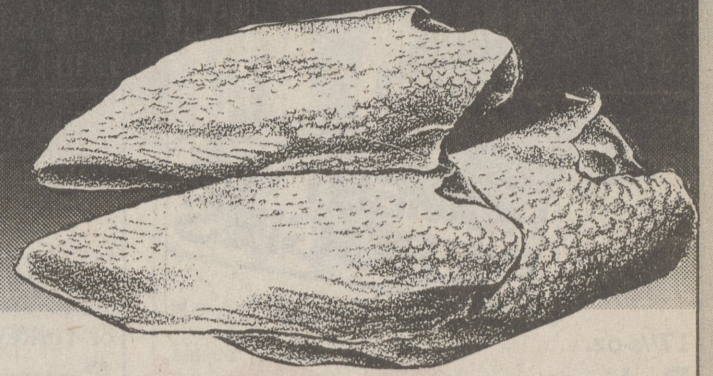
Stock up on Chuck



Boneless Chuck Roast

1⁹⁹
Lb.

Stock up on Chicken



Fancy
Grade A Chicken Breast

1⁴⁹
Lb.

Tender Boneless Sirloin Steaks **2⁶⁹** Lb.

Filet Mignon
Fancy Trimmed Beef Tenderloins **6⁹⁹** Lb.

Lean Ground Chuck **1.89** Lb.
Extra Lean Sirloin Patties **2.19** Lb.

Boneless Chuck Steak **2.19** Lb.

Beef Boneless Shoulder Roast **2.29** Lb.

Beef Boneless Shoulder Steaks **2.39** Lb.

Fancy Chuck Boneless Cube Steaks **2.49** Lb.

Extra Lean and Juicy Beef Chuck Cubes **2.39** Lb.

Top Blade Boneless Chicken Steaks **1.99** Lb.

Fresh Grade A (4-Lb. Avg.) Large Roasting Chicken **89¢** Lb.

Fresh Boneless & Skinless Chicken Breast **3⁴⁹** Lb.
(Perdue, Lb. \$3.69)

Fresh Chicken Livers **59¢** Lb.

Stock up on Packaged Meats

New, 1-Lb. Pkg.
Kunzler "Leaner Wiener" Beef Franks **1⁹⁹** Lb.

Swift - Portions Butterball Breasts **3.39** Lb.

1-Lb. Pkg., Old Fashion Wood Smoked Kunzler Sliced Bacon **2.59**

1-Lb. Pkg. Kunzler Meat Franks **1.69**

1-Lb. Pkg., Wilson Corn King Franks **1.29**

1-Lb. Pkg., Reg. or Lower Salt, Wilson Corn King Bacon **1.99**

Stock up on Heat & Serve

On-Cor Redi-Serve Breaded Pork Patties **1⁹⁹** Lb.

On-Cor Redi-Serve Breaded Veal Patties **2.19** Lb.

On-Cor Redi-Serve Breaded Chicken Patties or Nibblers **2.99** Lb.

Stock up on Wilson Frozen

Wilson Frozen IQF, 4-Lb. Bag Assorted Pork Chops **6.99**

Wilson IQF, 3-Lb. Bag Center Cut Pork Chops **7.99**

Wilson Frozen IQF, 3-Lb. Bag Boneless Pork Chops **9.99**

COUPON

Shur Save

Grade A Frozen Hen Turkeys

12 to 14-Lb. Average **49¢** Lb.

Limit one coupon per shopping family. Good February 4 thru February 10, 1990.

Stock up on Mr. Turkey:

3-Lb. Avg., Frozen Gold Foil "Mr. Turkey" Turkey Breast **2.99** Lb.

3-Lb. Avg., Cooked, Half Smoked or Oven Roasted "Mr. Turkey" Turkey Breast **3.99** Lb.

Honey Glazed or Hardwood Smoked 1 1/4-Lb. Avg. "Mr. Turkey" Turkey Ham **2.69** Lb.

DELI



Swift Chopped Ham

Water Added **1⁵⁹** Lb.

Wampler/Longacre Chicken Roll

2⁴⁹ Lb.

Kozy Shack Rice Pudding

1³⁹ Lb.

Tobin's Texas Franks

Tobin's Natural Sheep Casing Franks **3.19** Lb. **2⁴⁹** Lb.

Water Added, Hatfield Virginia Baked Ham **3⁴⁹** Lb.

Wampler/Longacre Baked Turkey Ham **2⁴⁹** Lb.

Mother Goose Liver Sausage **2⁹⁹** Lb.

Alpine Lace Cooked Ham (Water Added) or Low Sodium American Cheese **3³⁹** Lb.

Swift II Primo Genoa Salami **3⁴⁹** Lb.

Hatfield German Bologna **1⁷⁹** Lb.

Water Added Pepper Ham **3⁴⁹** Lb.

Alpine Lace Low Sodium Swiss Cheese **4¹⁹** Lb.