

# Lemmond looks into shooter's furlough

By CHARLOT M. DENMON  
Staff Writer

State Senator Charles Lemmond said Monday that it is time to give more support to police officers.

"We have some good police officers in the Back Mountain and I firmly believe we should give them all the support that we can," Sen. Lemmond said in reference to the letter he received from Dallas Township Police Chief Miers about the possible furlough from prison of Donald Kelly, who shot two Dallas police officers in June, 1986.

Sen. Lemmond said he has asked the counsel for the Senate Judiciary Committee to provide him with an analysis of the status in notifying victims.

"When I receive this information I want to go over it with the Back Mountain police chiefs," Lemmond

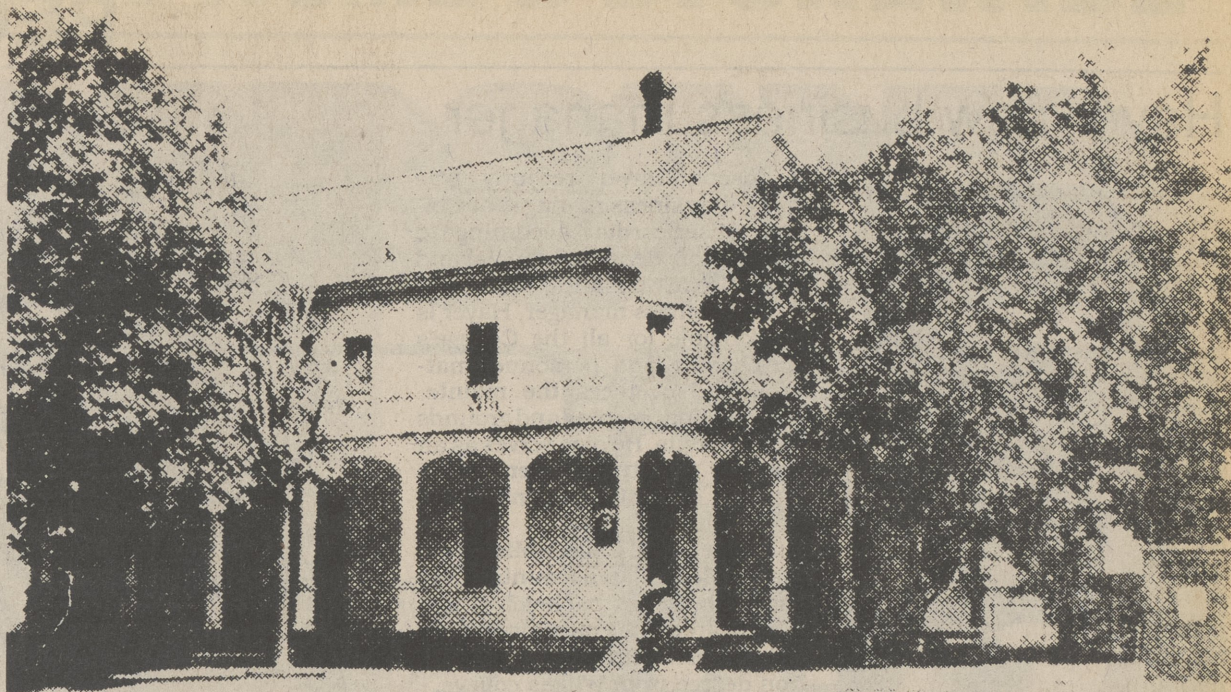
said. "I am pleased that Miers sent me a copy of the letter and I have sent a copy to the committee. "If we need to review the laws and regulations for our correctional institutions, we should look into what needs to be done. The Back Mountain residents appear to be united in their feelings in this case. It seems to be the topic of conversation wherever you go. It's time we took care of our police officers," Lemmond said.

Donald Kelly came into the Dallas Township police station with a .357 magnum June 6, 1986, and told patrolmen James Tupper and Wayman Miers to call Chief Miers and Patrolman Elliot Ide to the station because he wanted to kill them.

When the patrolmen refused, a struggle ensued and both officers

were shot by Kelly before he was taken down and incarcerated. At his trial Kelly pleaded guilty to two charges of aggravated assault and as part of a plea agreement, charges of attempted homicide were dropped. He was sentenced to two concurrent terms of five to 10 years in the State Correctional Institution. Now Kelly may become eligible for furlough under the regulations of the Department of Correction.

Victim James Tupper, who has since resigned from the police force, said no mention was made of parole or furlough at the trial. "Kelly showed no signs of remorse during the trial," Tupper said. "If there had been anything about the furlough, I would have never agreed to plea bargain. I will do whatever I can to stop the furlough process. Kelly is a dangerous individual."



The Lehman House

# The Lehman House was once a stage stop

By CHARLOT M. DENMON  
Staff Writer

Through the 1900's there were three grocery stores in the vicinity of Lehman Center, only one of which is still in business today. The other two are no longer businesses, but the buildings in which they were housed are still standing.

One of these was the Thomas Nelson Major Store built in the 1900's and the other was the Lehman House - later better known as the Gleason House - which was destroyed by fire about 1917 and later rebuilt.

The Lehman House was once a stage coach stop and well-known inn and is said to have dated back to Civil War times. The reconstructed building still stands on the side of Route 118 with the road going behind the weigh scales and the flag pole, leading to the Lehman garage and junior high school.

In 1900 the Lehman House operated by Hank Thomas and his wife Belle was known for the delicious chicken dinners the Thomases served at the inn. Later operation of the inn was assumed

by Fred Gleason and his wife, who renamed it the Gleason House. It was still famous for its chicken dinners. The Gleasons operated the inn until Fred Gleason died there.

In 1910, the Lehman High School had a dinner and a reception there for Dr. D.J. Waller of what was then Bloomsburg Normal School, now Bloomsburg State University. Dr. Waller was guest speaker for commencement and high school juniors and seniors as well as teachers in the area, who attended Bloomsburg were invited to the dinner. Dr. H.A. Brown of Lehman, a Bloomsburg alumnus paid for the dinner.

Later a Mr. Gallagher owned the hotel and inn and Fred Risley operated Gleason House until it burned down in 1917. The site of the Gleason House was vacant for a number of years, then a store building was built by the Megs in 1923 and operated as an ice cream parlor.

During the next several years there were several types of business in the store, first operated by Frank Randall, then Herman Brandon, followed by William and

Eleanor Sippel and Charles Kellar.

Wesley and Dorothy Moore bought the building and moved there in 1945. When the new highway was constructed, first Route 115 and later changed to Route 118, Moore had the building moved back.

A former resident of Dallas, Moore operated a meat market and a grocery store in the building for many years and while he was there, the Lehman Post Office was located in a part of the building. Moore also rented apartments upstairs. Moore died in the apartment in the former Gleason House. Mrs. Moore still lives in one apartment and her sister, Arlene B. Rood, also lives in one of the apartments.

The Moores were noted for the beautiful lawn and fine garden that surrounded the building. Mrs. Moore was in the Dallas Post Office for a number of years before she retired.

Although no longer used as a business place, the house is remembered by many of the native residents of Lehman and is admired for its architecture.

# Oak Hill rate proceedings dispute resolved

By CHARLOT M. DENMON  
Staff Writer

Rep. Scott Dieterick recently told residents of Oak Hill that he was informed by Bill Shane, chairman of the Pennsylvania Public Utility Commission that the rate proceedings protested by Oak Hill residents were settled by agreement of the parties and formalized by a Commission Order adopted April 13, 1989.

Shane explained that the order requires that National Utilities Inc. parent company of Oak Hill Water Company, reorganize all of its utilities into six divisions, and within one year after the reorganization is complete, the company is required to submit an engineering report for each division detailing all necessary improvements, a timetable for construction, and a budget for funding such improvements.

Shane stated that a Commission staff member of the Bureau of Safety and Compliance inspected the Oak Hill Water Company facilities and interviewed customers in October and found that pressures were adequate and

the water appeared to be clear and free from dirt and sediment, but that the chlorine level was higher than necessary and a valve on the pipe connecting the pressure tank to the main near the storage tank is leaking.

Shane explained to residents that the company agreed to fix the leaking valve and adjust the chlorinator to keep the chlorine at a level which complies with DER requirements, but which will not be objectionable. Shane stated he believed the service being fur-

nished by the company meets Commission standards and there was no basis for disturbing the settlement order to require a reduction in rates, at least not at the present time.

Chairman Shane also explained that the company was informed that it must list a phone number on the bill which can be called for complaints or service problems, and since many companies owned by National Utilities involve toll charges, the company will accept collect calls from customers.

# Gypsy moth bill passes 50-0

By CHARLOT M. DENMON  
Staff Writer

Senator Charles Lemmond announced Monday afternoon that the Gypsy Moth bill he introduced in the Senate was passed unanimously 50-0. The measure will double the number of acres to be sprayed to exterminate the gypsy moth.

"The 400,000 acres approved by

the Senate surpasses the number of acres proposed originally by DER which was only one-quarter of the number. The Gypsy Moth covers 48 of the 67 countries in the Commonwealth and if the acreage had been scaled down, it would put many areas out, Lemmond said.

Now the bill has gone to the House where I hope it will be passed as soon as possible."



• Hand Knit Sweaters  
• Quality Yarns  
• Knitting Lessons

## Kaffe Fassett Sweater Kits


# Shepherd's Pride

842 Wyoming Ave., Forty Fort  
288-5020

## January Special

Colorful  
Arrangements

\$25.00 Value For  
**\$18.95**



### EVANS-KING FLORAL INC.

1280 Wyoming Ave., Forty-Fort, PA  
822-1128 • 288-3671

**GRAND  
OPENING**

## SAKURA Martial Arts Cultural Center



CLASSES IN:  
• Chinese Arts  
• Japanese Arts  
• Okinawan Arts  
• Weapons Arts

FOR THE SERIOUS  
MARTIAL ARTS  
STUDENT  
ONLY!

LARGEST TRAINING  
FACILITY IN  
N.E. PENNA.  
TAILORED PROGRAMS  
TO MEET YOUR  
GOALS.

OUR TEACHING STAFF  
ARE PROFESSIONALS

SEPARATE CLASSES:  
• Beginner  
• Intermediate  
• Advanced  
• Children

VISIT US AT:  
SAKURA M.A.C.C.  
Rt. 779 Wyoming Ave.  
Kingston, PA  
OR CALL:  
**287-6767**

**BE A BLACK BELT!**

# DARING'S

MEMORIAL HIGHWAY, DALLAS

## MRS. D'S DELI SPECIALS

Stuffed Cabbage.....lb.	\$3.69
Potato Salad.....lb.	\$1.29
Macaroni & Cheese.....lb.	\$1.99
Tangy Meatballs.....lb.	\$2.79

Hot Soup & Chili, Monday Thru Saturday

Not Responsible For Typographical Errors  
We Reserve The Right To Limit Quantities

**OPEN EVERY DAY 8 a.m. to 9 p.m.**

MAC Accepted Here For All Purchases  
**675-0696**





## U.S. Taxpayers: lighten your load!

Jack Smoak • Scott Grant  
829-1776

Don't pay more taxes than you have to! These municipal bond funds are designed to lighten your tax burden. The more taxes you pay, the more you need:

- Colonial Tax-Exempt High Yield Fund
- High tax-free income.
- Added degree of safety through diversification and Colonial's extensive in-house credit analysis.

Colonial Tax-Exempt Insured Fund

- Tax-free income.
- Bonds are insured as to payment of principal and interest. The price of the bonds and Fund shares will fluctuate.

Both funds offer: \* Monthly distributions  
\* Free checkwriting \* Telephone exchanges  
\* Professional management...with a low minimum investment of \$250.

Lighten UP! Call or write today.

**Private Ledger**

Financial Services  
15 S. Franklin St., W-B • Suite 201

I need to lighten my tax load. Please send me a Colonial Tax-Exempt Trust prospectus containing more complete information including fees, charges and other expenses. I'll read it carefully before I invest or send money.

Name \_\_\_\_\_  
Address \_\_\_\_\_

**COLONIAL** Phone \_\_\_\_\_  
Group of Mutual Funds Best time \_\_\_\_\_

Colonial Investment Services Inc., Distributor  
TET-SD 1088

**SAVE 20% TO 50% and more**

## PRICES COME TUMBLING DOWN IN TOWN & COUNTRY'S MID-WINTER SALE

If you care about quality, you'll love Town & Country!  
Right now, you'll love Town & Country even more!

During our Mid-Winter Sale, prices come tumbling down on the famous brands of fine quality furniture and accessories we feature throughout the year. You'll see the original price tags side-by-side with the sale tags, so you can instantly recognize the tremendous savings.

Even if you don't discover exactly what you're looking for, we'll custom order your selections at discounts of 20% to 40%!

Save on these famous brands:

- Henredon
- Sherrill
- Karastan
- Lane/Venture
- Dixie
- Stiffel
- Karges
- Union National
- White
- Richardson Brothers
- Pennsylvania House
- Centure ShowPlace
- and many more

Constant turnover is the life blood of our business. This sale is designed to make room in our galleries for the new pieces which are arriving daily.

# S A L E



**town & country**  
Furniture Galleries

253-257 South Main Street, Wilkes-Barre

Free Parking  
Free Delivery  
Credit Terms Available  
Decorator Service

Open Mon. & Thurs. 9:30 A.M. to 9 P.M.  
Tues., Wed., Fri., Sat. 9:30 A.M. to 5 P.M.  
Sunday 12 Noon to 5 P.M.

Phones: Wilkes-Barre 823-0138 Scranton 693-2357