

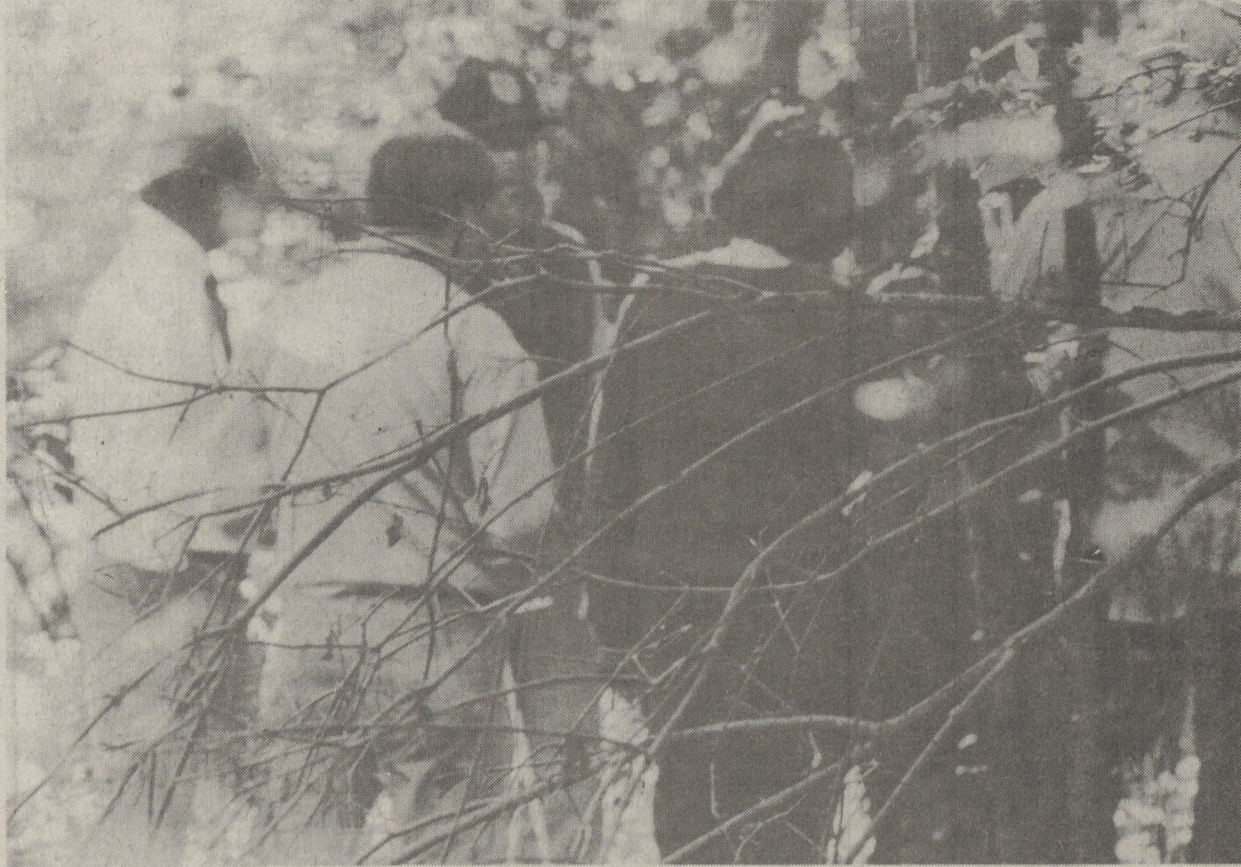


THE DALLAS POST

Vol. 100 No. 39 "A Centennial Edition"

Dallas, PA Wednesday, October 4, 1989

35 Cents



WETLANDS NEED NOT BE WET - Wetlands aren't always wet, Ed Perry of the U.S. Fish and Wildlife Agency told those who went on the wetlands tour last Wednesday. Hydric soil and the types of plants are good indications of wetlands Perry told them. (C.M. Denmon Photo)

Wetlands expert says identification, enforcement are critical to survival

By CHARLOT M. DENMON
Staff Writer

Few persons would have difficulty determining what is a creek, stream, river, pond or lake, but wetland identification is more difficult. That was the general consensus of a group of interested Back Mountain people who toured an area consisting of both wetlands and uplands last week.

Despite an identical definition of wetlands by the U.S. Army Corps of Engineers and the Pennsylvania Department of Environmental Resources, an on-site field investigation by qualified individuals is the best method of determining if wetlands are present and delineating the boundary.

One important rule learned by those on the tour is that wetlands are not always wet. Certain plants found growing on sites may indicate wetlands; the types of soils are another indication as to whether or not there are wetlands in a certain location.

Ed Perry, assistant supervisor of the United States Fish and Wildlife Service with headquarters in State College went into great lengths demonstrating samples of wetlands and the types of plants to look for.

"If in doubt, get a map of the area in question, circle the area you are questioning and send it to our office," Perry told those on the tour in the afternoon and also those who attended the Back Mountain Citizens' Council meeting Wednesday night. Perry told the persons at the meeting that within the next few months the government will be doing a lot of public education on wetlands.

"We have eight biologists in our office and in Pennsylvania all the waters of the United States come under their jurisdiction. We work with the U.S. Army Corps of Engineers," Perry said. "Under the Clean Water Act, anyone must have a permit to fill waters in the United States. DER is the lead agency in Pennsylvania. Any earth moving project needs a permit, and it is difficult to get a permit to do anything in wetlands."

Perry emphasized several times that wetlands need not be wet. Areas saturated at one time with surface or ground water may be dry and plants may be growing. The types of plants may indicate the presence of wetlands, according to Perry.

"The soil takes on a certain color and herbaceous plants dominate a site. If I'm driving along a highway and I see a sign 'Clean Fill Wanted', I find there's usually a water problem. If I see ruts in a field in July or August after a long period of rain I become suspicious."

"No pasturing, no plowing of fields, small areas that are refuges for animals, nothing growing on the surface in a wet season, trees

"Under the Clean Water Act, you must have a permit to fill waters in the United States."

Ed Perry
Assistant Supervisor
U.S. Fish and Wildlife Service

losing leaves, split trunks, gray soil-these are indications of wetlands.

"Wetlands hold back pollutants such as heavy metal, phosphates and nitrates, all of which cause fish kills. Sediment is the real killer in Pennsylvania."

Perry explained that every animal uses wetlands, these are their natural habitats for beavers, mink, otters and water fowl which are at an all-time low level. Wetlands are for egrets, salamanders, turtles, birds and have a high value for over 500 species of animal life in Pennsylvania.

He explained that blueberry bogs and high rhododendrons are great for black bears. In answer to a question on peat mining, Perry said that if the peat bog was in existence there are less than two percent of these left. He said originally there were about 215 million; in the mid 70's, less than 54 percent and now less than five percent.

See WETLANDS, pg 5

IGA closes Dallas store, landlord seeks new tenant

By CHARLOT M. DENMON
Staff Writer

After 10 years of serving customers in the Back Mountain the IGA Market located in the Dallas Shopping Center has closed. The doors of the Dallas store were closed last Saturday night at 10 p.m.

Jeff Brown, district manager of the area IGA Markets, said that the Dallas store closed due to a drop in the volume of sales. He said the work on Route 309 made it difficult for customers to enter the highway after shopping at the store and after construction was completed, the volume of business never picked up.

The work on Route 309 was done last year but Brown claimed customers never came into the store as they had in the past.

Both the fulltime and part-time employees of the Dallas Store were told earlier of the planned closing of the store and were told they would fill positions in one of the other IGA Stores which are located in Nanticoke, Plains and Tunkhannock.

George Nicholson of Humford Equities, owner of the Dallas Shopping Center said the closing had been worked out with his company.

"IGA is closing the store with the consent of the landlord," Nicholson said Friday. "The shopping center is working with other interested parties for a use other than a supermarket, which today requires substantially more space than is available in the existing building."

"Additional improvements to the existing center are in the planning stages."

Inside The Post

Calendar.....18	Police Report..... 2
Classified.16-17	Religious Services.....8
Editorials.....4	School.....13
Obituaries.....2	Sports.....14-15

Coming up:

- BACK MOUNTAIN WATER COMMISSION - Thurs., Oct. 5, 8 PM, Kingston Township Municipal Bldg.
- DALLAS SCHOOL BOARD - Mon., Oct. 9, 8 PM, Administration Bldg.
- JACKSON TWP. MUNICIPAL AUTHORITY - Mon., Oct. 9, 7 PM, Jackson Township Fire Hall
- KINGSTON TWP. SUPERVISORS - Wed., Oct. 11, 8 PM, Kingston Township Municipal Bldg.
- KINGSTON TWP. PLANNING COMMISSION - Tues., Oct. 10, 8 PM, Kingston Township Municipal Bldg.
- LAKE-LEHMAN SCHOOL BOARD - Tues., Oct. 10, 8 PM, Ross Elementary School
- LEHMAN TWP. SUPERVISORS - Mon., Oct 9, 8 PM, Lehman Township Municipal Bldg.

Deer Meadow developer begins construction on first home site

By CHARLOT M. DENMON
Staff Writer

Soon, a large two-story beige with blue trim Colonial home will be located on a large parcel of land in the Deer Meadow development in Dallas Borough. It's construction comes after 20 months of controversy between a group of Borough residents and local officials before a final settlement was reached that allowed contractor-developer Edward Nelen could build his first house.

During that time, Nelen, with preliminary approval from the Luzerne County Planning Commission and the local zoning board, loved quietly, at his own risk,

working on the 51 acres of land he had purchased to build the Deer Meadow development.

Nelen lined each of the individual properties, put in storm drains, put in sewer lines approved by the authority and installed all the other utilities underground as required for a sub-division.

"It's taken a long time and a lot of stress to get to this point," Nelen said. "I don't know if I would have ever done it if I had known what was ahead but I had looked for a long time for a piece of land like that land. I had offers to purchase land in other municipalities, but I loved that land from the first time I saw it."

"I also did my homework on it and contacted all the agencies and companies I was supposed to be before I ever purchased it. I knew every inch of the ground, knew what was for and what was against it. It was a struggle, but I was able to last through it."

Nelen has started the foundation for his first house and is also selling lots on which he will build homes according to the designs wanted by the buyer. His first home, however, will be a two-story colonial four-bedroom home with 2,700 feet of living space, a family room, a fireplace, an eat-in kitchen with

See DEER MEADOW, pg 2

Lake-Lehman mini cheerleaders rank high with cheers and dance routines

By SCOTT A. DAVIS
Post Staff

The Lake-Lehman Junior Knights Cheerleaders placed high in several events recently during a competition sponsored by the Kingston Huskies.

The Competition was held at the Wyoming Valley West Stadium in Kingston on September 23.

The 'C' Division girls; under the coaching staff of Holly Patton, Helen Frank, and Robin

Gorton, competed in cheers and a dance routine. The dance routine was done to the hit songs "I think we're alone now" and "Kokomo". The routine netted the girls second place. They also received third place for "Hello" and third place for "Chant."

The 'B' Division competed in the cheerleading competition in their age category. They won second place for their "Hello" cheer and third place for their "Home town" cheer.

The 'A' Division girls were

joined by the 'B' girls for a dance routine done to "The Right Stuff" for which they took second place.

The 'A' Squad also cheered their way to first place for their hometown "Knights just want a victory" cheer and a third place for their sideline chant.

The 'B' girls are coached by Joan Croman and Lori May. The 'A' girls are coached by Aprille Covert and the advisors for the three squads are Sandy Dobrowski and Debbie Maskalis.

"Girls, I am proud of you," cheers Coach Croman.



'A' and 'B' Squad- First row (left to right)- Kari Maskalis, Barbara Shaver, Andrea Gray, Tonya Kosakowski, Chavon Croman, Shelby Wandel, Stephanie Frank. Second row- Danielle Conte, Hillary Pilosi, Ceri Yankoski, Nichelle Costello, Melonie Bedford, January Cook, Marisa Bevan. Third row- Lori Kubacki, Shelene Perlis, Richelle Martin, Melissa Brown, Crystal Covert, Kristy Hozempa, Kristi Snyder, Cheryl Borish, Melissa Kozlowski, Rachel Chamberlain. Fourth row- Diane Jones, Jaime Pall, Kristy Maskalis, Kelly Komsisky, Sheilia Lee, Cheryl Elston, Advisor Debbie Maskalis. Fifth row- Coach Joan Croman, Advisor Sandy Dobrowski, Coach Lori May. Absent from photo are Doreen DeLaney, Justine Ruger, Mary Harrison, Rachel Kaufman, and Traci Simosom.



'C' Squad- First row (left to right)- Kari Maskalis, Neena Patton, Alyson Beran, Mary Jo Conrad, Carrie Houssock, Sara Lozo, Stephanie Frank. Second row- Tia Cook, Leigh Anri Isaacs, Kim Bronson, Trisha Pilosi, Becky Kaufman, Rachel Harrison, Jennifer Frank, Tina Baigis. Third row- Coaches Robin Gorton, Holly Patton, Helen Frank.