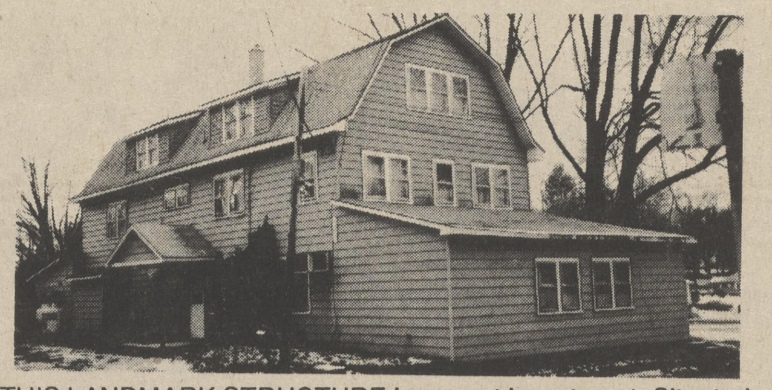


B.A.C.K M.O.U.N.T.A.I.N

Real Estate



HUNLOCK CREEK



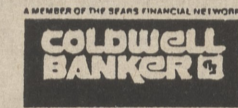
THIS LANDMARK STRUCTURE is a great investment. Situated on 3/4 acres w/lakefront. One of the few Hotel Liquor Licenses left in NE PA. With the area growing every day, don't miss your opportunity! Call Bob Cook TODAY!

\$150,000

WARM & COZY! Best describes this 4 bedroom, 2 bath, energy efficient home on Chase Road. Large lot w/many extras. Call Carole Poggi.....**\$50's**
STEP BACK INTO YESTERYEAR - In this 3 BR Victorian, located in the heart of Dallas. 1 1/2 baths and 1 car garage. Call George W Lacey III**\$69,900**

LAND

PLYMOUTH TOWNSHIP - 2 ACRE "DREAM HOUSE" Site. Call Ed McCabe.....**\$21,000**
PLYMOUTH TOWNSHIP - 1 1/4 ACRES waiting for YOUR home! Call Ed McCabe.....**\$19,000**
DALLAS - 15.5 ACRES w/gas line available & paved road. Ideal for developers. Call Diane Gallagher.....**\$79,900**
BUNKER HILL - 2 1/2 ACRES, 1/3 cleared - Ideal spot to build. Call Eileen Melone.....**\$24,000**

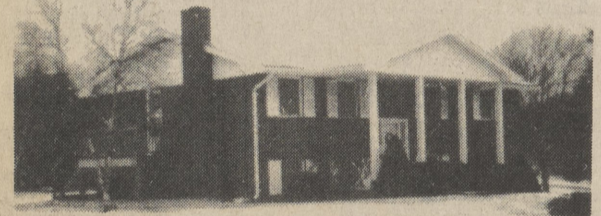


HOWELL & JONES REALTORS
 Memorial Highway, Dallas, PA 18612
 (717)675-1169

M. GRIFFIN REAL ESTATE
 Phone 675-4663
 675-HOME

Rte. 415 Memorial Highway
 Dallas, PA 18612

NEW LISTING



DALLAS - Outstanding 4 bedroom, 2 1/2 bath brick bi-level. Living room w/fireplace, family room, updated kitchen. All this plus almost half-acre lot in top location of Elmcrest. Call Mary today. **\$149,900**

BACK MOUNTAIN - NEW LISTING! Scenic one plus acre lot & 2-3 bedroom split level with Florida room, 3 car attached garage. Dallas Schools. Call Mary.....**\$91,900**
SHAVERTOWN - Entertainer's Ultimate-Wonderful free-flowing contemporary with delightful indoor spa, billiard room, formal DR, dramatic LR, 3-4 bedrooms, 2 1/2 baths. Enjoy the best address in town. Call Mary.....**\$299,900**
DALLAS - The Most Spectacular Unit Available-Refined atmosphere created by full-length 2-story windows in LR, formal DR, 3-4 bedrooms, gourmet kitchen, 2 1/2 elegant baths. Open & bright w/skylights, fireplaces, patios & balconies. Everything your heart desires. Call Mary.....**\$299,900**
DALLAS - Enjoy the lifestyle you deserve in this carefree and stylish custom built home. Four bedrooms, 2 1/2 baths, LR, DR, family room, eat-in kitchen w/ oak cabinets, workshop in basement, 2 car garage. A Must To See! Call Mary.....**\$179,900**
DALLAS - Superb Family Neighborhood, close to schools, shopping & churches, this well built bi-level offers 4-5 bedrooms, family room w/ fireplace, full ceramic bath plus 2 halve baths, 2 car garage. Call Mary.....**\$139,900**
DALLAS - Drive out to a home where there's room for you to breathe. A large ranch w/finished basement. If country living is your style, call Debbie.....**\$81,500**

LIST WITH US...WE GET RESULTS! 675-4663 or 675-HOME
 CALL ANYTIME!

Century 21 Ruth K. Smith Real Estate Inc.
 696-1195

No one has the power to move real estate like the CENTURY 21 system.



When it comes time to sell your home, consider this... Only one real estate sales organization sells more homes, finds more homes, and delivers more successful transactions every day than anyone else in the world. No one's got the power to move real estate like the CENTURY 21 system.

Our CENTURY 21 Professionals handle it all, from single family homes to multi-use commercial enterprises. So whether you're looking to buy, sell or invest in real estate, you don't have far to look. Call our CENTURY 21 office today.

Century 21 Ruth K. Smith Real Estate Inc
 358 S. Memorial Hwy.
 Shavertown, PA
 696-1195



Put Number 1 to work for you.

THE DALLAS POST CLASSIFIED

LEGAL NOTICES

NOTICE IS HEREBY GIVEN that Letters Administration C.T.A. have been granted in the Estate of Henry Gross, late of Kingston Borough, Luzerne County, Pennsylvania, who died on December 5, 1988. All persons indebted to said Estate are requested to make payment and those having claims or demands to present the same without delay to Elizabeth Ward, c/o John E. Morris, III, Esquire, Morris & Shucosky, P.O. Box 1457, 65 W. South St., Wilkes-Barre, Pennsylvania 18701. 9-3-P

NOTICE is hereby given that Letters of Administration have been granted in the Estate of EDWARD E. VISNEFSKI, late of Edwardsville Borough, Luzerne County, Pennsylvania (died September 18, 1988) to BARBARA VISNEFSKI. ALL persons indebted to said estate are requested to make payment and those having claims and demands to present the same without delay to the Administratrix or her attorney, ROBERT J. SCOVELL, ESQUIRE 792 Market Street Kingston, Pennsylvania, 18704 8-3-P

AUTOPARTS

1979 DODGE OR PLYMOUTH Purulator air filters. \$2.50 ea. Champion spark plugs 50 cents ea. 696-1927. 8-4-P

MOTORCYCLES

MOTORCYCLE INSURANCE - Shop compare, save. Open weekdays 5-9 p.m. Open Sunday. 1-800-52 CYCLE. 8-2-P

WANTED

BUILDING LOTS OR ACREAGE wanted in the Back Mountain. Private buyer, paying cash. Call 696-4140. 7-3-P

LEGAL NOTICES

RECEIPTS:	GENERAL FUND	STATE AID FUND	REVENUE SHARING FUND	SINKING FUND	POLICE PENSION FUND	TOTAL ALL FUNDS
REAL ESTATE TAXES	27,916					27,916
TAX COLLECTION	5,746					5,746
REAL ESTATE TRANSFER TAXES	5,658					5,658
EARNED INCOME TAX	78,287					78,287
LICENSES & PERMITS	238					238
FINES & FORFEITS	7,075					7,075
INTEREST, RENTS & ROYALTIES	1,563	2,749	20		10,138	14,470
INTERGOVERNMENTAL REVENUES						
GRANTS	7,205	41,677				48,882
CHARGES FOR SERVICES	2,396					2,396
MISCELLANEOUS REVENUES	502					502
REFUND FROM PRIOR YEARS	0					0
EXPENDITURES:						
INTERFUND OPERATING TRANSFERS				2,613		2,613
CASH BALANCE AT THE BEGINNING OF THE YEAR	22,594	20,133	266	10	135,252	178,255
TOTAL RECEIPTS & CASH	159,180	64,559	286	2,623	145,390	372,038
EXPENDITURES:						
GENERAL ADMINISTRATION	14,884					14,884
TAX COLLECTION	4,489					4,489
PUBLIC SAFETY	46,530					46,530
PUBLIC WORKS (HIGHWAYS)	22,096	51,133				73,229
OTHER PUBLIC WORKS	109					109
EMPLOYEE WITHHOLDINGS & BENEFITS	40,857					40,857
INSURANCE PREMIUMS	2,613					2,613
INTERFUND OPERATING TRANSFERS	2,613			3,414		6,027
MISCELLANEOUS EXPENDITURES	27,602	13,426	286	10	141,976	183,300
TOTAL EXPENDITURES & CASH	159,180	64,559	286	2,623	145,390	372,038

Assessed valuation \$3,048,450
 Outstanding debt \$11,702

Auditors:
 Jo Ann Wascaus, Chairman
 Linda Van Gorder, Secretary
 Kathleen Williams, Vice Chairman
 9-1-P

LEGAL NOTICES

EMPLOYEE BENEFIT TRUST REPORT
 NON-UNIFORMED EMPLOYEES PENSION PLAN
 DALLAS TOWNSHIP AS OF 12/31/88

Cash January 1, 1988	1,200	
Investments	15,907	
Unreserved Fund Balance		17,107
REVENUES		
Interest, Rents, Royalties	449	
Employer contribution	8,174	
Member Deduction	8,175	
Employee Retirement System Revenues	190	
Total Revenues	16,988	16,988
Total Available		34,095
EXPENDITURES		
Public Employee Retirement System Expenditures	1,389	
Total Expenditures		1,389
ASSETS		
Cash, December 31, 1988	(1,933)	
Investments	34,639	32,706
Total Expended & Unexpended		34,095

POLICE PENSION TRUST FUND
 TOWNSHIP OF DALLAS, PA
 DECEMBER 31, 1988

Cash, January 1, 1988	497	
Investments	731,692	
Unreserved Fund Balance		732,189
REVENUES		
Interest, Rents & Royalties	578	
Income, member contributions	5,908	
Interfund, Transfers In	7,051	13,537
Total Available		745,726
EXPENDITURES		
Insurance Premiums	3,079	
Employee Retirement System	4,439	
Interfund Transfers Out	6,462	13,980
Investments		731,692
Cash, December 31, 1988		54
Total Expended & Unexpended		745,726

ADDIT REPORT
 TOWNSHIP OF DALLAS, PA.
 DECEMBER 31, 1988

Assessed valuation 15,998,835 Tax Rate 6 mills

GENERAL FUND		
Cash balance	January 1, 1988	183,107
RECEIPTS		
Taxes, Real Estate and Per Capita		167,321
Local Enabling taxes		423,219
Licenses and permits		2,910
Fines and Forfeits		13,146
Interest, Rents and Royalties		7,838
Intergovernmental Revenues		31,063
Charges for Services, Public Safety		140,350
Miscellaneous Revenues		20,588
Total Revenues & Financial Source		806,435
Total Available		989,542
EXPENDITURES		
General Administration		68,774
Public Safety, Police, Fire & Zoning		391,844
Public Works, Health & Welfare		1,000
Public Works, Highways & Roads		287,149
Public Works, Culture & Recreation		2,285
Miscellaneous Expenditures		128,953
Total Expenditures		880,005
Cash Balance Dec. 31, 1988		109,537
Total Expended & Unexpended		989,542

Board of Auditors
 Jane J. Norris
 Kenneth G. Kirk
 Loren N. Crispell

STATE LIQUID FUELS HIGHWAY AID FUND
 DALLAS TOWNSHIP, DALLAS PA.
 DECEMBER 31, 1988

Unreserved Fund Balance, January 1, 1988	4,268	
Interest Earnings	1,951	
Grants, State Liquid Fuels	83,162	
Total Revenue and Fund Balance		89,381
EXPENDITURES		
Cleaning Streets and Gutters	5,237	
Snow and Ice Removal	1,356	
Highways and Bridges	75,696	
Total Expenditures and Fund Balance		7,092 89,381