



Valentine program

Children at the Lehman United Methodist Charge presented a special Valentine's Day program February 12. Shown are:
 1st row: Kristin Summa, Mandy Ptashinski, Tanya Atherholt, Lauren Lipski, Philip Pineno.
 2nd row: Mandy Flynn, Jonathan Heath, Mickey Snyder, Jon Dawe, Stephanie Pineno, Sandy Lowery, Karen Bowersox.
 3rd row: Jessie Schold, Amber Atherholt, Kristy Snyder, Matthew Gearhart, Michael Shambora, Shelley Lowery.

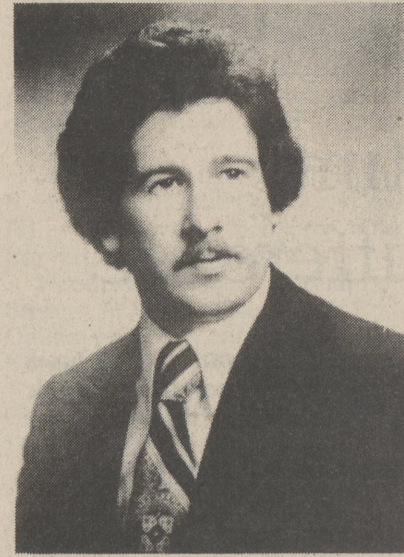
George Gwilliam announces run for county prothonotary

By RONALD BARTIZEK Post Staff

George Gwilliam of Harveys Lake has formally announced a run for the office of Luzerne County Prothonotary on the Republican ticket. Gwilliam said Monday he has been endorsed by both the Luzerne County Republican Executive Committee and the Back Mountain Republican Association.

The Prothonotary's office handles all civil suits filed in the county and appoints arbitration boards that attempt to settle cases before they reach the courts. Gwilliam did not know how many persons are employed in the office, but said its budget for this year was about \$360,000. Attorney Gene Duffy of West Hazleton is the incumbent.

Gwilliam said that the office pays a salary of \$22,700, although in 1989 the compensation will be \$34,000 due to a reconciliation arising out an action by the county commissioners several years ago.



George Gwilliam

Gwilliam intends to spend more time on the office than he claims Duffy does. "Duffy is not in much," he said. "Somebody should be there on a consistent basis." While this is Gwilliam's first run

for county office, he is no stranger to politics or the courthouse. Gwilliam presently serves on the Harveys Lake Borough Council and is chairman of the planning commission. He has also served on the borough's zoning board. Gwilliam's grandfather was the county's recorder of deeds and Burgess of Plymouth Borough. His father was the clerk of courts.

Gwilliam said that should he be elected Prothonotary he will resign his positions on the council and planning commissions.

Gwilliam is a district sales manager for Globe Communications. He is a graduate of Florida International University with a B.S. in management. He has served as member of the Surgeon General's workshop on handicapped children, has been a volunteer at the Ronald McDonald House in Danville and is a volunteer firefighter.

Gwilliam, 36, is married to the former Therese Becker of Shavertown. They have one daughter, Cori.

Liz Sichler cites "politics" in resignation from LIU board

By CHARLOT M. DENMON Staff Writer

Liz Sichler will submit her resignation as Lake-Lehman representative on the Luzerne Intermediate 18 Unit effective June 30, 1989, she told the Lake-Lehman School Board at last Tuesday's meeting.

"At the January meeting of the LIU board I suggested that all 13 members of the board resign effective June 30 so the home school districts of each board representative could have the opportunity to reappoint new ones if they desired," Sichler said.

"I believe there is too much politicking going on at LIU especially in hiring. I will submit my resignation at the March meeting of LIU but I will consider a reappointment by Lake-Lehman if they feel I am the person they want on that board. It's very important who serves on that board because we're talking about the special education of children. I wanted all of the LIU board members to resign and give their districts a chance to evaluate the work being done. I hope the other directors will follow my recommendation; it remains to be seen," Sichler said.

The board did not discuss Sichler's resignation at the meeting.

District superintendent Charles Borchetta reported that the 1990 budget is progressing quite well and the individual school budgets are being reviewed and should be completed by this week. He believes the administration will be in a position to present next

year's proposed budget to the board during April.

Borchetta also reported that there were 1,341 total absences during January compared to 1,779 in January, 1988 for a decrease of 438, or an increase in student attendance of four percent.

In other action, the directors:

- Approved courses of study in advanced placement chemistry and consumer chemistry for the 1989-90 year by an 8-1 vote with director Robert Emery voting in the negative

- Approved courses in consumer mathematics and calculus unanimously by a 9-0 vote.

- Approved the resignation of David Hopfer as assistant boys volleyball coach and appointed Jeris Baranowski to the post for the 1988-89 season at a salary of \$485.

- Approved appointment of Charles James, Jr., as volunteer assistant boys volleyball coach for the 1988-89 season.

- Appointed Vincent Stryjewski as volunteer assistant boys baseball coach for the 1988-89 season.

- Appointed Nancy Stark as a 5 1/2 hour cafeteria worker at Ross Elementary School at her current hourly rate effective Feb. 15, 1989.

- Appointed Frances Sabalusi as a three-hour cafeteria worker at the Lehman-Jackson Elementary School at the hourly rate of \$3.55 effective Feb. 15, 1989.

- Reaffirmed support of its attendance policy adopted in September, 1988. Board president Marc Elgaway read a statement saying the policy had significantly improved attendance and had widespread approval of the public.

- Approved a Substance Abuse Policy in place of the former Drug Awareness Policy.

The regular monthly meeting of the Board will be Tuesday, March 14, 1989, 8 p.m., in the gym of the Lake-Lehman Junior High School.

An "Engaging" Reason to Visit Us at ...
PRECISION LITHO-GRAPHICS
 10% Off
 our large selection of
 Wedding Invitations, Announcements and Accessories
 with this Ad
PRECISION LITHO-GRAPHICS
 DALLAS CORNERS BUILDING 550 ROUTE 415
 DALLAS (717) 675-2324 Offer Expires March 31, 1989

Cook's PHARMACY
 Memorial Highway, Shavertown 675-1191

- Computerized Prescription Service
- Russell Stover Candies
- Greeting Cards
- PA Lottery Ticket
- Newspapers
- Magazines

Manufacturer's Special Until Mar. 2
SALE
KraftMaid
CHEERRY
Kitchen & Bath
Cabinetry
 for the same price as oak!

- 3 outstanding styles
- 5 hand-rubbed finishes
- Select from over 65 convenience features
- Come in and get a quotation on a new KraftMaid kitchen or bath

See our magnificent Showroom Displays

Save Now!
50% OFF mfg. list
 FACTORY AUTHORIZED SALE

Betterhouse
 1140 Wyoming Ave., Wyoming
 Showroom Hours:
 Daily 8:30 a.m. to 4:30 p.m.
 Thursday Eve. 'til 8:00
 Saturday 'til Noon
 Other hours by appointment
 Phone: 288-8421

How Fresh Is Farm Fresh?

- 4:00 a.m. and the cows are being fed.
- 5:00 a.m. and the cows get milked.
- 7:00 a.m. and the truck takes the milk from the barn to the store for processing.
- 8:00 a.m. and the milk is pasteurized, bottled and packaged . . . and the Dairy Store opens for business.

It Can't Get Any Fresher!

HILLSIDE FARMS
 DAIRY STORE
 HILLSIDE ROAD SHAVERTOWN 717-696-2881

Ben A. Franklin is new KT supervisor

The Kingston Township Board of Supervisors Friday appointed Ben A. Franklin of Ridge Street, Shavertown to the board to fill the unexpired term left by the death of Ambrose Gavigan.

Franklin, who has lived in Shavertown for nearly 34 years, operated the Gulf service station in Trucksville until his retirement in 1987. A Republican, Franklin said Monday that he has already

begun to circulate a petition so that he can run for a full term in office in the fall.

In order to accept the supervisor post, Franklin resigned his position on the township's planning commission. He had been a member of that body for nearly nine years.

In other business at the special meeting, the supervisors:

- Placed a referendum question to allow small games of chance on the May ballot.

- Approved a resolution to protest the proposed rate hike by the Trucksville Water Company.

- Accepted the planning commission's recommendation to approve the Blazes subdivision and final plans.

- Accepted the final plan for the Hidden Acres subdivision.

NOW thru Sunday ONLY!

La-Z-Boy Showcase shoppes

PRESIDENTS' DAY SALE

You won't believe it's a recliner!
 A hand-tailored, superbly crafted selection of classic styles that feature richly stained wood details, hardwood frames and graceful contours. Recliners you'll treasure for their style at a price that's a real value!

A. "CHELSEA" HIGH LEG RECLINER
 Classic Queen Anne styling has wing back and warmly finished cabriole legs. **\$459.95**

B. "CHATEAU" HIGH LEG RECLINER
 Traditional styling with matched welting and detailed cabriole legs. **\$399.95**

C. "FOXCROFT" HIGH LEG RECLINER
 Traditional wing chair features roll arms and warm Chippendale legs. **\$459.95**

La-Z-Boy Showcase shoppes
 Use our terms, your Visa or MasterCard

180 East End Centre, Wilkes-Barre (717) 825 7520

COME SEE OUR COMPLETE SELECTION OF FAMOUS LA-Z-BOY® PRODUCTS:
 • Modular seating • Wall recliners • Rocker recliners • Swivel rockers • Sofas • Sleep sofas • Reclining loveseats