

THE DALLAS POST

EDITORIALS

No problem with Lake-Lehman attendance policy

We find no fault with the more stringent attendance policy adopted this year by the Lake-Lehman School District. If anything, we wonder why it is so liberal.

Superintendent Dr. Charles Borchetta has said that he wants the District to be the best in the area, but that his goal cannot be reached if students aren't in school. That makes eminent good sense to us. The "strict" policy allows 16 unauthorized absences yearly, or eight per semester before action is taken. That's unauthorized - that is, with no physician's excuse. Add legitimate days off for illness and emergencies and a student could easily be absent for an average of one day weekly.

Parents and students have complained that the schools are saying by way of this policy that they don't trust them to decide if their children are too ill to attend classes. We don't know the board's intent; we do know that there is ample opportunity for parents and students to explain absences before they become a problem.

We agree with the Superintendent - the most basic element of success in any endeavor is being there when you must. Anyone who thinks they can cut corners (or classes) and still achieve their best is fooling themselves. It seems to us that the Lake-Lehman policy may keep some students from falling into that trap.

Landfill site meetings need participation

The Luzerne County Landfill Siting Committee is about to begin a series of public forums to solicit comment from County residents regarding the location of a future solid waste dump. The question is not if there will be a new site, but where it will be located in the County.

Through these meetings, citizens have the opportunity to voice their concerns and preferences about this important decision. This week, The Post has published both the schedule of meetings and an informative article explaining some of the procedures and regulations pertaining to the site selection process. Space doesn't allow us to publish the selection committee's criteria in full, but you may pick up a copy at our office if you would like to see them.

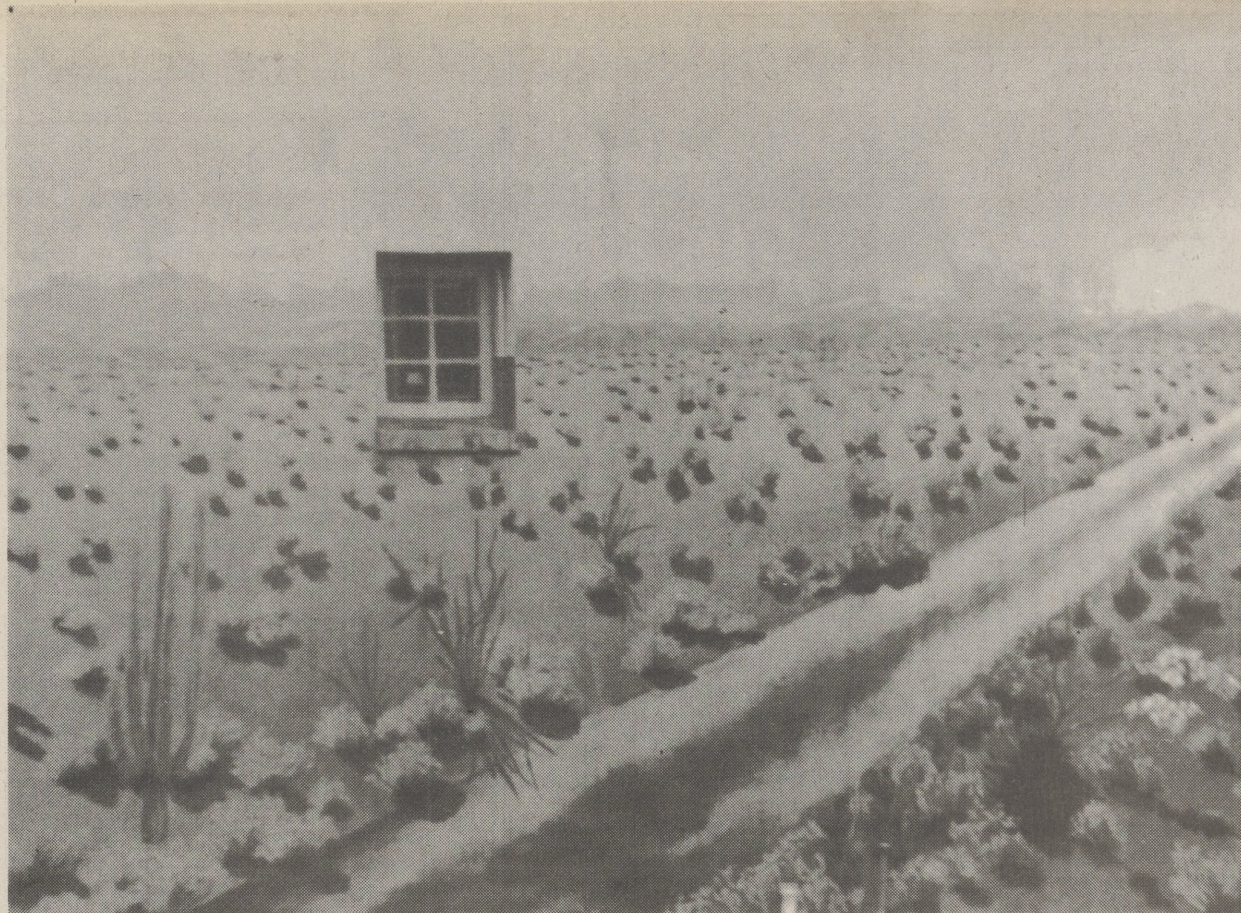
We urge Back Mountain residents to get involved in this process early, by attending one or more of these meetings. The rise of the Back Mountain Citizens' Council has shown that there are many capable and concerned persons living here - persons who could influence this critical matter.

Keep those cards coming

The response to The Post's agreement to act as a drop-off point for old Christmas cards has been greater than we could have imagined. When Marilyn Maslow, local coordinator of the effort for the American Cancer Society, approached us, we were uncertain whether many people would care about the project. Boy, were we wrong!

From here the cards will be sent to the Indian Cancer Society. That group reuses the illustration part of the cards and manufactures "recycled" cards. The money generated by their sale is used to treat cancer among Indian groups.

It's a worthwhile cause, and one that this area will have contributed much to. We'll accept cards throughout the month of January, so keep them coming.



Temperatures soar in Dallas desert?

Is this a local winter vacation hot-spot right in the middle of Dallas? No the scene in question is in the middle of Dallas center, but it is painted onto the side of the Recyclery Shop and faces the center of town. (Photo by Charlotte Bartizek)

Waste management needed to insure economic and environmental protection

Editor's note: The following article was provided by the Luzerne County Planning Commission. They asked that it be published to alert residents to the need for long-term planning for waste disposal in the County.

The 1990's in Luzerne County should bring further progress on economic development as well as environmental assurance to the quality of life, provided sufficient attention is directed toward a total waste management system to benefit citizens, both current and future.

Through recent legislative action and regulation, the Commonwealth of Pennsylvania has clearly redefined waste management systems and concepts. Under regulations developed to implement Act 97, the Pennsylvania Solid Waste Management Act, newly permitted landfill sites must provide for a long term containment and management system.

Through the passage of Act 101, the Pennsylvania Waste Planning, Recycling and Waste Reduction Act, Municipal Waste Recycling is mandated to be developed by September 1990 which, in effect, will redefine the waste composition entering landfill sites. Waste disposal strategies and sound technical assistance are able to develop a comprehensive waste management assistance system; however positive citizen involvement and community leadership must be part of the system to control and manage waste disposal.

As more municipalities such as Hazleton and Kingston follow the City of Wilkes-Barre's example and develop recycling programs, strategies to develop recycling throughout Luzerne County are evident. While there are many techniques for designing a comprehensive waste management system, no system will eliminate the need for a modern sanitary landfill. To meet the challenge of developing a comprehensive county wide disposal system, the County Commissioners have created the Luzerne County Landfill Siting Committee.

Built into the procedures adopted by the Siting Committee are measures designed to make the decision-making process neutral and objective. The scheduled public forums at which the siting

process will be discussed are designed to receive public comment concerning the procedures in order to involve as many people as possible in the process. Every community in Luzerne County should take advantage of participating in the forums and providing advice and guidance to the Landfill Siting Committee.

As the Committee continues its work, additional attention is being placed on the way in which a waste management system can be implemented in Luzerne County. Particular attention is being placed upon the City of Wilkes-Barre and its recycling system. The City had a recycling emphasis long before the passage of Act 101, which mandates recycling in the larger municipalities of the Commonwealth. Attention should be placed upon the marketing process which requires strong attention in light of changing market conditions for a variety of recycling materials.

With the inescapable conclusion that recycling alone cannot solve the waste management needs of Luzerne County, many organizations have turned their attention to an examination of examples of landfill operations which seem to be professionally managed and operated. The Lycoming County Landfill Site in the Williamsport area is operated by the Lycoming County Commissioners and serves as an example of a publicly operated facility to which groups of public and private sector officials in Luzerne County have visited to determine its applicability to this region. There are close to 500 acres available within that facility for the disposal of non-tox wastes.

Those who would like more information pertaining to the work of the Luzerne County Landfill Siting Committee should contact Adrian Merolli, Director, Luzerne County Planning Commission, Courthouse Annex, Wilkes-Barre, PA 18702.

Meetings set for landfill siting

The Chairman of the Luzerne County Landfill Siting Committee, Mr. Richard Allen, announced that the Committee will hold a series of public forum meetings to solicit input from the general public and interested parties on landfill siting procedures and criteria.

These forums are designed to obtain recommendation on landfill siting and are not to be used as a vehicle for fighting any particular landfill project or advocating alternative disposal or waste reduction methods.

Due to the anticipated large attendance, the Committee is requesting the presentations be limited to five (5) minutes. Written comments are strongly encouraged and will be the first scheduled at the public forums. Also, written comments may be submitted to the Luzerne County Planning Commission up until February 7, 1989.

The Committee urges all County residents to participate in these public forums and avail themselves of the opportunity to assist in this important first step towards a long-term solution to Luzerne County's solid waste disposal problem.

Any questions or requests for additional data should be directed to the Luzerne County Planning Commission (825-1560).

The following is the schedule and locations of the public forums:

- Monday, Jan. 23, 1989 2:00 P.M. Luzerne County Courthouse County Commissioners Meeting Room
- Monday, Jan. 23, 1989 7:00 P.M. Luzerne County Courthouse County Commissioners Meeting Room
- Wednesday, Jan. 25, 1989 7:00 P.M. Hazleton City Hall Council Chambers
- Monday, Jan. 30, 1989 7:00 P.M. Pittston Senior High School Auditorium
- Tuesday, Jan. 31, 1989 7:00 P.M. Luzerne County Community College Conference Center

County residents are not restricted to the forum in their location, but may attend any of the forums.

Only yesterday

50 Years Ago - Jan. 20, 1939 Caddie LaBar saves boy from drowning

Nine trains carry county residents to Gov. Arthur James inauguration.

Sunday Independent, one of four Wilkes-Barre newspapers on strike since October 3 will publish this Sunday.

Caddie LaBar of Dallas, ambulance driver at Stroudsburg, saves life of youth from drowning in a pond.

WPA will encircle Harveys Lake with 8.2 miles of new sidewalks.

Engaged - Marian Scott and Joseph Lions, Jr.

40 Years Ago - Jan. 21, 1949 Mrs. Howell elected book club president

Mrs. Fred Howell is elected president of Back Mountain Memorial Library Book Club.

Frank S. Prutzman awarded Keystone degree at State F.F.A. convention.

Himmler Theater erected in 1929 will celebrate its 20th birthday in March.

Engaged - Edna Grossman and Frederick Kammler.

Wed - Frances M. Shappelle and William E. Walker.

30 Years Ago - Jan. 16, 1959 Fishing huts damaged by wind

Many smelt fishermen's huts were broken up and left floating in the lake after a heavy wind last weekend.

One of the most popular spots on Lake Street, Dallas, is the skating rink on the property of Dr. and Mrs. Harry Gallagher.

Wyoming Valley National Bank, oldest bank in the valley, plans to expand at Shavertown.

Paul Rodda, Dallas, is reelected as president of Northeastern Chapter of American Institute of Architects.

Eugene Teeter, Luzerne County Superintendent of Schools tells Dallas Directors Dallas wooden frame building is not condemned.

Wed - Elizabeth Rinus and John S. Cave Jr.; Joan Guyette and Leonard Schwab.

Engaged - Ruth Margaret Clark and David A. Roberts; Nancy Hall and Thomas Louder.

Westmoreland defeats Ashley 76-57.

20 Years Ago - Jan. 16, 1969 Strikers may cross line at Natona Mills

It is expected strikers will begin crossing picket line at Natona Mills if a possibility of closing threatens the plant.

Completion of a new power transformer at the Glenview Station in Kingston Township will mean the distribution of an added 12,000 watts of power.

Kiwanis music festival is open to all persons with musical talent. Wed - Martha Norris and James C. Goodwin; Marjorie Walp and Peter Blessing.

Engaged - Linda Jean Watts and John Mallin III; Ruth D. Shouldice and Robert E. Townsend.

Dave Eddy, Ron Sorber, Don Spencer and Tim Woodling star in Knights win over Meyers 30-19.

10 Years Ago - Jan. 18, 1979 Four from Lake-Lehman on TV show

Sandy Ambrose Shem is scheduled to return to troubled Iran Saturday.

Noxen Township supervisors will discuss use of the old Noxen School building decided to them.

The Dallas Post
 Published Weekly by Bartsen Media, Inc.
 P.O. Box 366, Dallas PA 18612
 Telephone: 717-675-5211

Ronald A. Bartizek Editor and Publisher
 Charlotte E. Bartizek Associate Publisher
 Charlot N. Denmon Reporter
 Rob Zapotoski Composition
 Tami Britton Advertising Acct. Exec.
 Karen Cundiff Office Manager
 Olga Kostrobala Classified/typesetting
 Linda Shumaitis Photo/darkroom

MEMBER OF THE NATIONAL NEWSPAPER ASSOCIATION AND THE PENNSYLVANIA NEWSPAPER PUBLISHERS ASSOCIATION

The Post asks: "Are you taking a winter vacation this year?"



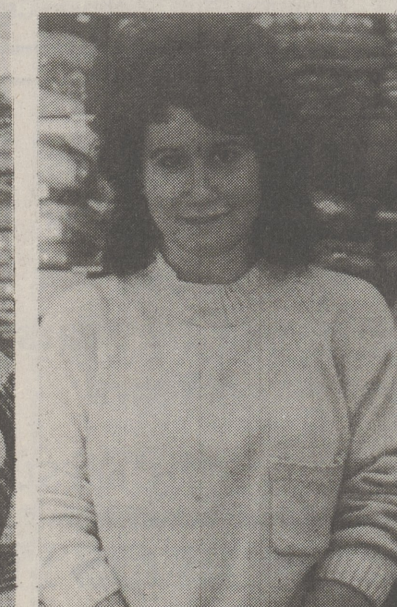
Cathy Delaney
 Housewife Dallas
 "Yes, to Sarasota, Florida. We go at least once a year."



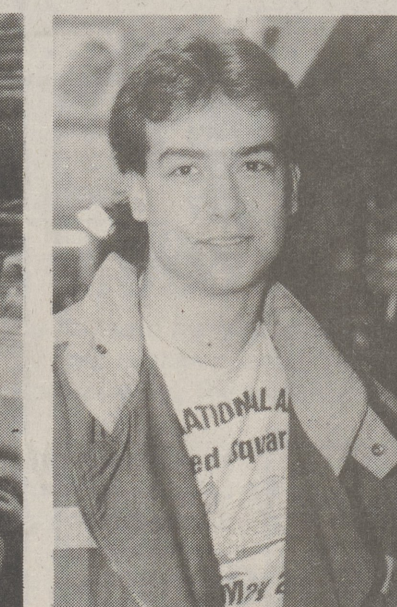
Kara Wojtowicz
 Student Dallas
 "Yes, my whole family is going to Cleveland, Ohio, to visit my uncle and see Bon Jovi."



Jim Gorman
 Salesperson Dallas
 "I hope to be going to medical school this fall so I'll be saving my money and missing any vacation this year."



Meredith Mullin
 Student Harveys lake
 "Yes, I hope to go to Fresno, California, (if I pass this year) with my grandparents."



Eric Moore
 Student Dallas
 "I'm gonna be living in Ocean City, Maryland this summer, working at the Phillips Crab House on the beach so that'll be my vacation."



Teri Weldner
 Horse and dog groomer Plains
 "No, I'm always working and it's hard to get away having the horses to care for."