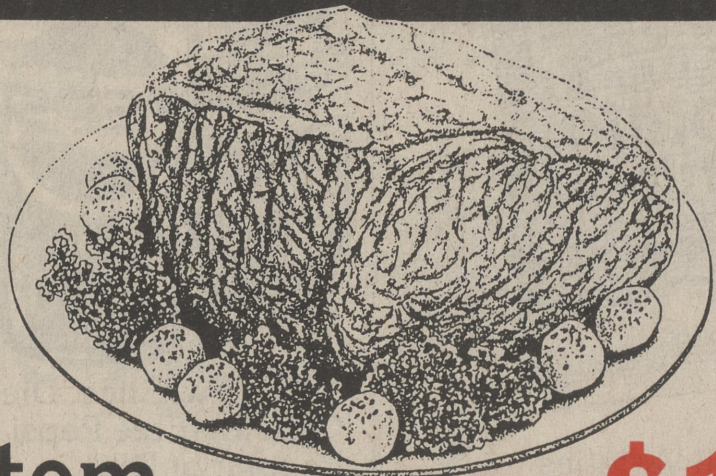


OUR QUALITY

PROUD of our **LOW PRICES!**



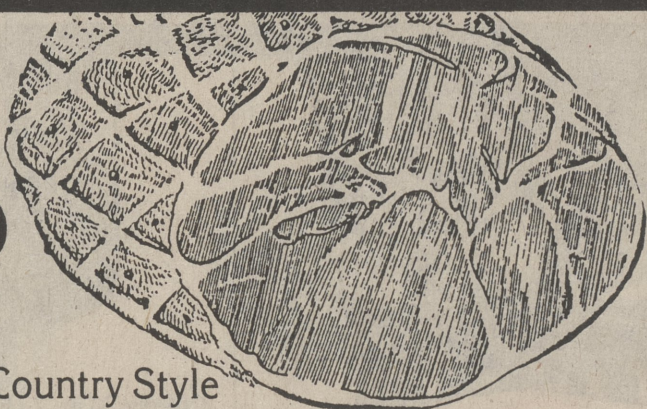
Boneless
**Bottom
Round Roast**

\$1.99
Lb.



Frozen
**4 to 7-Lb. Avg.
Turkey Breast**

\$1.39
Lb.



(Half, \$2.59 Lb.) Country Style
**Hatfield Whole
Boneless Hams**

\$2.49
Lb.



All Sizes, Self-Basting
**Land O' Lakes
Turkeys**

69¢
Lb.

Kunzler, Water Added
**Semi-Boneless
Hams**

\$1.79
Whole Ham Lb. Half Ham Lb. \$1.89
Where Available

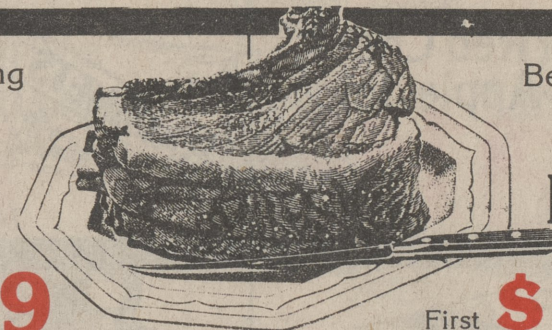


Whole
**Beef
Tenderloin**

\$4.99
Cut Free Lb.

Beef Standing
**Rib
Roast**

\$3.29
Large End Lb.



Beef Standing
**Rib
Roast**

\$3.49
First 4 Ribs Slightly Higher Lb.

Half, Lb. \$2.69
**Kunzler
Boneless Hams**



\$2.59
Whole Lb.

**Delmonico
Steak or Roast**

\$4.99
Lb.

Center Cut
**Ham
Steak**

\$2.59
Lb.

Boneless
**Eye Round
Roast**

\$2.49
Lb.

Boneless
**Swiss
Steak**

\$2.19
Lb.

Maple Leaf Plain or Orange Sauce
**Fresh
Ducklings**

99¢
Lb.

Boneless
**Rump
Roast**

\$2.19
Lb.

Boneless
**Eye Round
Steak**

\$2.69
Lb.

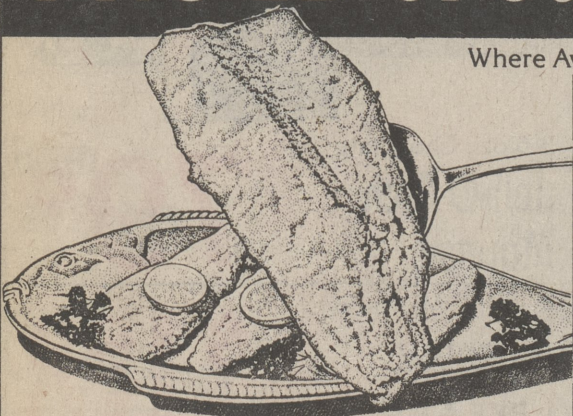
Polska
**Hillshire
Kielbasa**

\$2.29
Lb.

Lean
**Ground
Round**

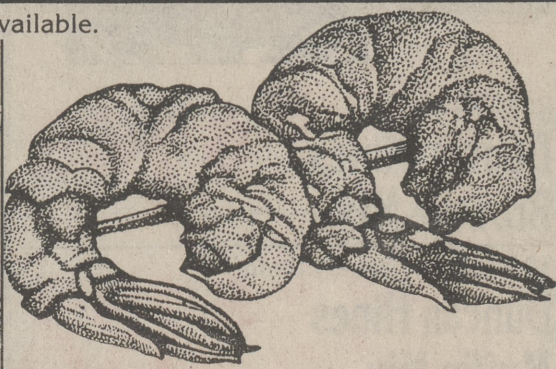
\$1.89
Lb.

PROUD of our SEAFOOD



Where Available.
**Halibut
Fillet**

\$4.99
Lb.



Fancy, Medium
**Pink
Shrimp**

\$5.99
41 To 50 Count Lb.

**Cleaned
Squid**

\$1.99
Lb.

California Monterey
**3-Lb. Box
Squid**

\$2.89
Lb.

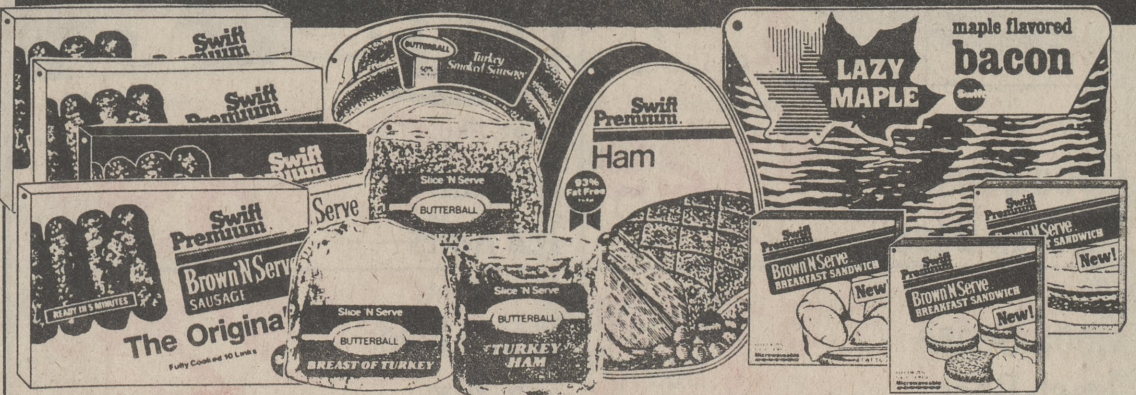
**H & G
Whiting**

89¢
Lb.

**5-Lb. Box
H & G Whiting**

\$4.89

SWIFT HOLIDAY SAVINGS



1-Lb. Pkg., Swift's
**Maple Sweet
Bacon**

\$1.29

5-Lb. Can
**Swift
Canned Hams**

\$9.99

**Swift Brown &
Serve Sausages**

99¢

Swift
**Butterball
Breast Portions**

\$3.39
Lb.

Swift Butterball Chunks
Turkey Ham

\$1.99
Lb.

All Varieties
Swift Sandwiches

99¢

Swift Butterball Chunks
Turkey Pastrami

\$2.59
Lb.

Swift Butterball Smoked
Turkey Sausage

\$1.99
Lb.