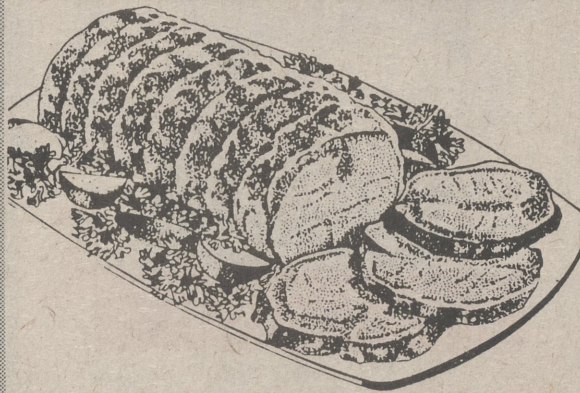


OUR QUALITY.

PROUD of our **LOW PRICES**



Oven Ready Loin Porketta or Boneless Pork Roast **\$2.59** Lb.



Center Cut Pork Chops or Roast

\$1.89 Lb.



Grade A Chicken Legs
Perdue 89¢ lb.

69¢ Lb.



1/2-PRICE!

1-Lb. Pkg. (Reg. \$1.89)
Hatfield Meat Franks **89¢**



9 to 11 Chops Quartered Pork Loin **\$1.59** Lb.



Special Trim-Boneless Delmonico Steaks **\$4.99** Lb.

Quick Fry Pork Chops

\$2.09 Lb.

Country Style Sausage

\$1.59 Lb.

Country Style Spare Ribs

\$1.69 Lb.

Hatfield Sauerkraut

2-Lb. Bag **69¢**

Pork Loin Roast (3-Lb. Avg.)

\$1.49 Lb.

Smoked Center Cut Ham Slices

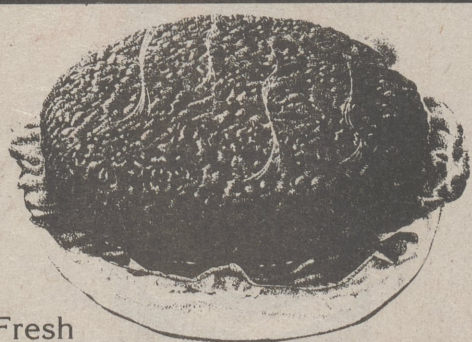
\$2.49 Lb.

Loin End Sirloin Chops

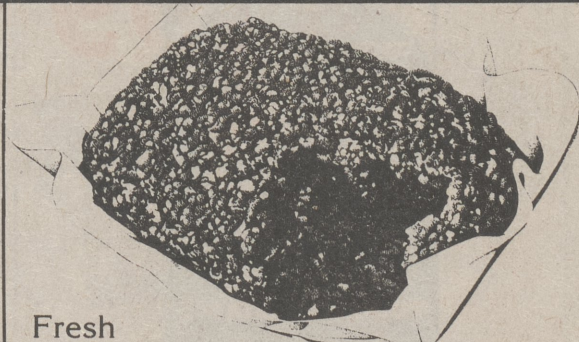
\$1.59 Lb.

Western Sliced Beef Liver

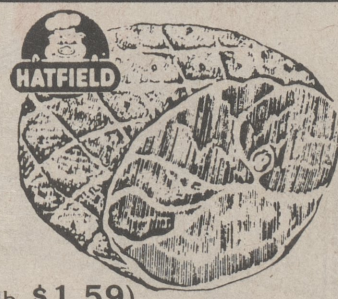
69¢ Lb.



Fresh Sirloin Patties **\$1.99** Lb.



Fresh Ground Round **\$1.79** Lb.



(Half, lb. \$1.59)
Semi-Boneless, Whole Hatfield Hams **\$1.49** Lb.



1-Lb. Pkg. Hatfield Bacon **\$1.79**



24-oz. Box, Weaver Zesty Wings **\$2.79** Lb.



12-oz. Breast Patties or Nuggets Weaver Chicken **\$2.49**



Hot or Sweet, Hatfield Sausage Patties **\$1.89** Lb.



1-Lb. Pkg., Hatfield Jumbo Grillers **\$1.79** Lb.