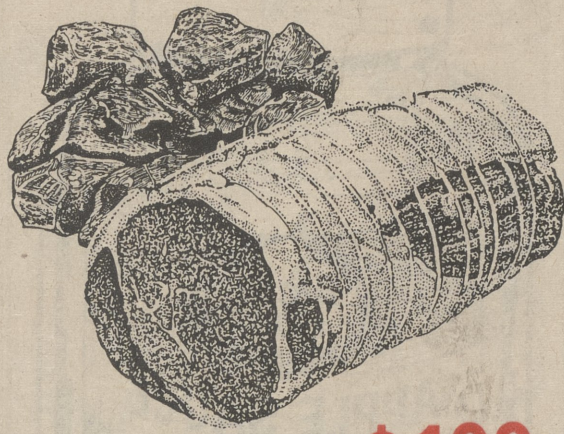
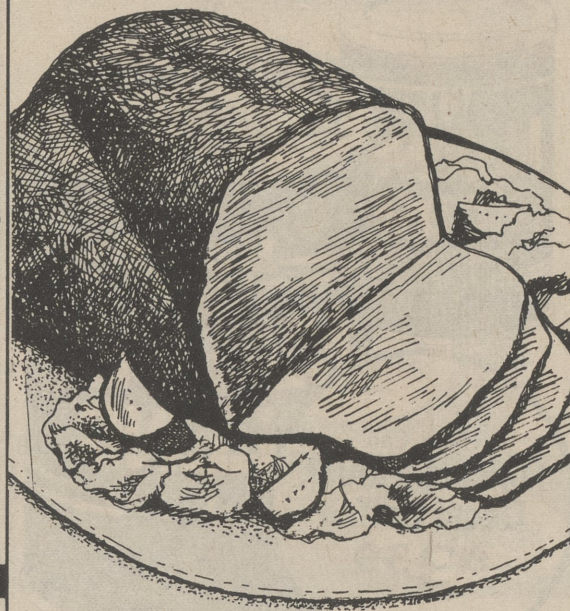


# SAVE MORE

PROUD of our LOW MEAT PRICES!



Eye Round Roast **\$1.99** Lb.



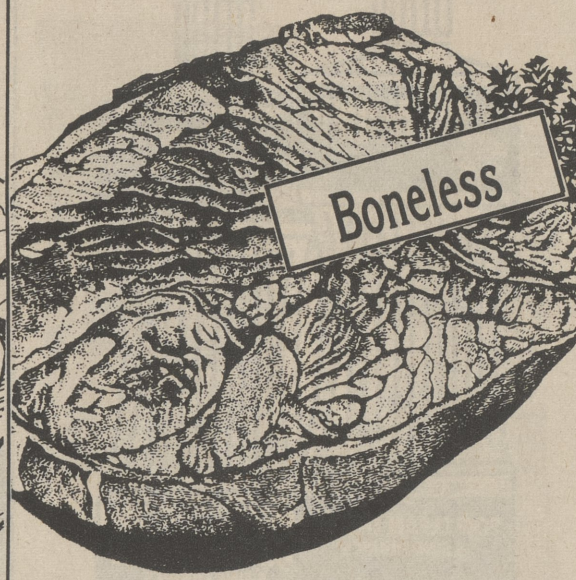
20-25 Lb. Avg., In Cry-O-Vac Bag

Whole Bottom Round

(Cut Free-Subject to Cutting Loss)

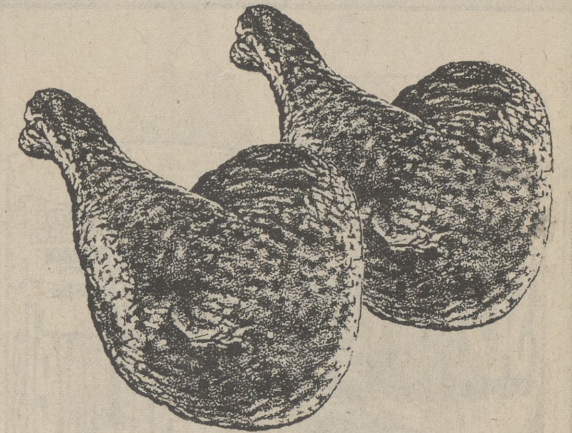
**\$1.29** Lb.

Consisting of:  
Rump Roast  
Round Roast  
Eye Roast  
Swiss Steak  
Cube Steak  
Ground Round



Full Cut Boneless Round Steak

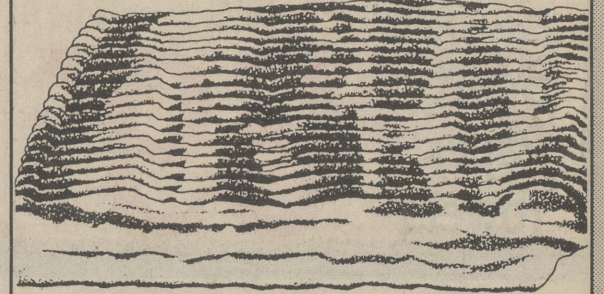
**\$1.79** Lb.



Grade A Chicken Leg Quarters **49¢** Lb.



32-oz. Pkg.—  
Steak-Umm Sandwich Steaks **\$4.99**



1-Lb. Pkg.—Swift Maple Sweet Bacon **99¢**

Beef Bottom Boneless Round Roast **\$1.49** Lb.

Cube Steak from Round **\$2.49** Lb.

Ground Round **\$1.79** Lb.

Hatfield Boneless Country Style Ham **\$2.59** Lb.

Eye Round Steak **\$2.19** Lb.

Bottom Round London Broil **\$1.89** Lb.

Beef Kabobs **\$2.49** Lb.

8-oz. Pkg.—All Varieties Swift Brown & Serve Sausages **99¢**

Swiss Steak **\$1.79** Lb.

Top Round London Broil **\$2.49** Lb.

Boneless Pork Chops **\$3.29** Lb.

Swift—Portions Butterball Turkey Breast **\$3.29** Lb.



Boneless Rump Roast **\$1.89** Lb.



Frozen Turkey Drumsticks **49¢** Lb.



Hatfield Smoked Picnics **79¢** Lb.



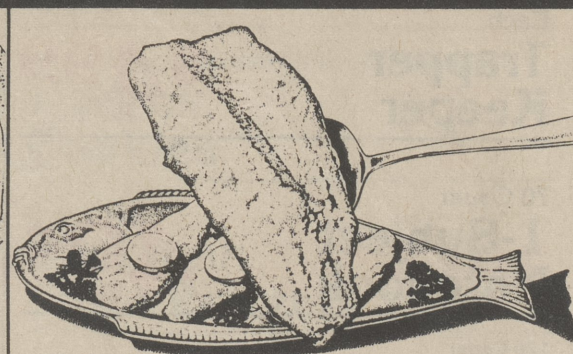
Brown & Serve Bacon & Egg, Ham & Cheese Croissant, Sausage & Egg (w/Cheese) Swift Sandwiches **99¢** Ea.

## PROUD of our SEAFOOD

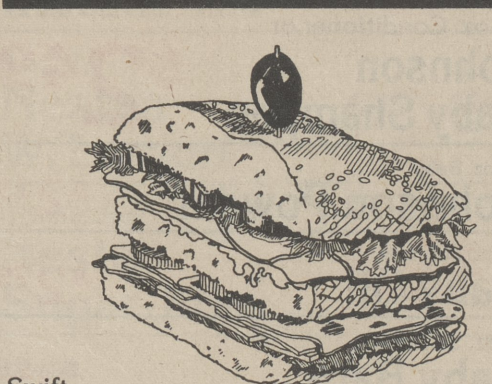
## PROUD of our DELI



Fancy Pink Medium Shrimp **\$5.99** Lb.



Boston Sole Fillet **\$5.99** Lb.



Swift Minced Bologna **\$1.59** Lb.



Imported Cooked Boiled Ham **\$2.19** Lb.



Blue Cod Steaks **\$2.99** Lb.



Sea Legs Supreme **\$4.39** Lb.



Stella Provolone Cheese **\$2.69** Lb.



Fresh Egg & Potato Salad **99¢** Lb.

Matlaw's, Large 30-oz. Stuffed Clams **\$2.99**

Sea Pack Shrimp-In-A-Basket **\$1.49**

Swift Pickle Loaf **\$1.99** Lb.

Il Primo Genoa or Swift Premium Hard Salami **\$3.39** Lb.

Matlaw's Frozen Cheese or Pepperoni Bite Size Pizza **99¢** Pkg.

8-oz. Pkg. Each

Swift Chopped Ham **\$1.49** Lb.

Sandwich Swift Pepperoni **\$3.39** Lb.