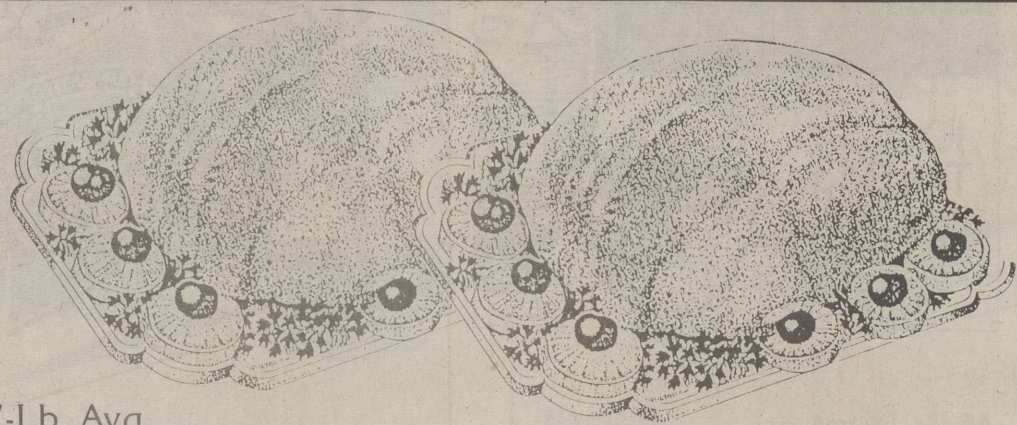


# OUR QUALITY.

## PROUD OF OUR MEATS



4 To 7-Lb. Avg.

**Turkey Breast**

**99¢** Lb.



Special Trim-Bone-In

**Sirloin Steak**

(Boneless lb. \$2.89)

**\$2.49** Lb.



**Grade A Chicken Legs**

**59¢** Lb.



Wilson

**Corn King Franks**

1-Lb. Pkg.

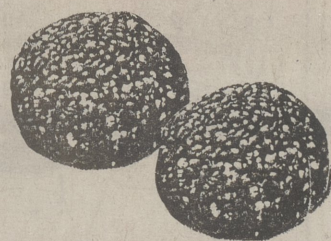
**79¢**

Great on the Barbeque Grill!



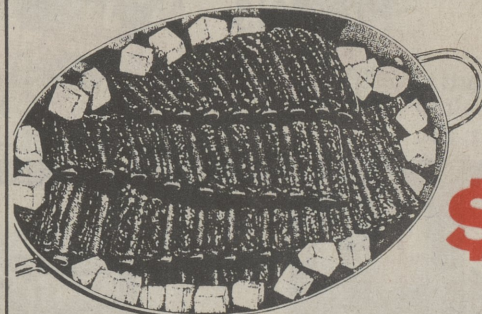
Fresh, Lean **Beef Patties**

**\$1.59** Lb.



Fresh **Sausage Patties**

**\$1.89** Lb.



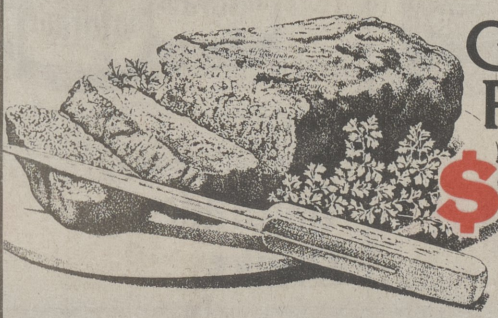
Baby Sheet **Spare Ribs**

**\$1.99** Lb.



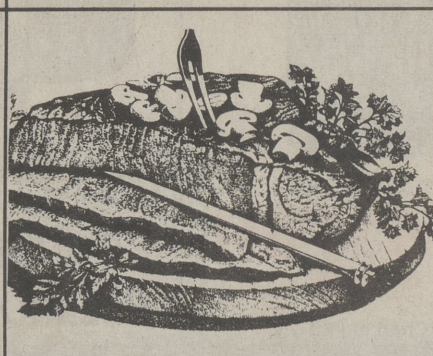
Fresh **Ground Chuck**

**\$1.49** Lb.



Fresh **Ground Round**

**\$1.89** Lb.



Boneless **Chuck Steaks**

**\$1.49** Lb.  
Or Roast

**Extra Lean Sirloin Patties**

**\$1.89** Lb.

Half Ham Lb. \$1.59

**Hatfield Whole Semi Boneless Hams**

**\$1.49** Lb.

**Fresh Italian Sausage**

All Varieties

**\$1.69** Lb.

**Fresh Center Cut Ham Slices**

**\$2.49** Lb.

**Boneless Shoulder Steaks**

**\$1.99** Lb.

**Chicken Thighs**

**69¢** Lb.

**Boneless Shoulder Roast**

**\$1.89** Lb.

**Chicken Drumsticks**

**69¢** Lb.

**Boneless Chuck London Broil**

**\$1.99** Lb.

Boneless **Chuck Cube Steaks**

**\$2.49** Lb.

**Boneless Chicken Steak**

**\$1.89** Lb.

Dutch Fry or Batter Dipped

**Weaver Chicken Breast**

22-oz. Pkg.

**\$2.99**