

# Belief in the future

## Robinson instrumental in securing PSU donation

By CHARLOT M. DENMON  
Staff Correspondent

A common belief in the future of Northeast Pennsylvania by Bell of Pennsylvania and Penn State University made it possible for Thomas Robinson, of Dallas, to obtain a \$1 million contribution to Penn State. Robinson, a district manager of Bell of Pennsylvania and a 1962 graduate of Penn State's School of Engineering, was instrumental in obtaining one of the largest contributions Bell has ever made to assist in the expansion of programs and research in the fast-growing telecommunications field.

The presentation of a \$1 million check from Bell of Pennsylvania to the Wilkes-Barre Campus of Penn State University launched the university's community campaign for more than \$2 million to build a Center for Technology at the local campus in Lehman.

Gilbert Wetzel, president and chief executive officer of Bell of Pennsylvania and a 1954 graduate of Penn State, presented the million dollar check to Penn

State President Bryce Jordan at a news conference in Wilkes-Barre. Of the \$1 million, \$400,000 is designated toward construction for the Center of Technology and \$200,000 to provide equipment and support of the local campus technology program. The remaining \$400,000 will help establish telecommunication technology programs at Penn State campuses in the Philadelphia and Pittsburgh areas.

Robinson is a member of the advisory board and the university's planning and steering committee. He became involved in the community fundraising early in the spring of this year and when it came time to obtain funding for the local campus Center of Technology, he went to Bell headquarters in Philadelphia. There he spoke to officials about how the project would serve Bell's interest as well as the interests of the Wilkes-Barre Campus.

As a leader in the world of technology, Bell felt the company should be a partner in the development of such a dynamic tele-communications center planned for the Wilkes-Barre

Campus.

As a native of Wyoming Valley, a resident of Dallas for the past 15 years and a Penn State graduate, Robinson said he had a special commitment in the local Center. He was successful in having two of the Philadelphia headquarters representatives come to this area to meet and talk with Dr. James Ryan, local campus director, as well as other Penn State officials to get a first-hand idea of the campus' need.

"From that point on, I kept Bell of Pennsylvania informed and we began talking of the need for funding the program," Robinson said. "We didn't start out with the idea of a \$1 million contribution but thought of something in the neighborhood of \$50,000. Then as more information developed on the project, it became obvious to Bell that this new technology center would produce potential graduates needed in the field of telecommunications."

"Bell began considering their contribution for three major reasons," he added. "Future educational resources, a commitment to Pennsylvania in

other areas than just large cities such as Philadelphia and Pittsburgh, and a desire to contribute to the future of Northeast Pennsylvania. Resources of such a center, advantages and a partnership in the project gave Bell the opportunity to benefit Penn State and the telecommunications program in general."

Bell of Pennsylvania decided if it made a contribution large enough, it could have a role in naming of the new center, according to Robinson. Dr. Ryan and two other Penn State representatives went to Bell's Philadelphia office and talked about a larger donation and about how the project could help Penn State University, Northeastern Pennsylvania and Bell of Pennsylvania. During the discussion, it was decided Bell could help get similar programs set up at a Philadelphia campus and at a Pittsburgh campus by contributing \$200,000 to each campus.

What started out as a \$50,000 contribution for the Lehman Campus evolved into a project to help Lehman Campus, Phila-

delphia and Pittsburgh campuses. The plan was put on paper and a figure of \$1 million derived.

Penn State University Main Campus agreed that if Bell of Pennsylvania wanted to give \$1 million to the Lehman Campus and the two others, this amount would be considered a donation to the \$200 million national campaign now underway by the Penn State University.

Robinson explained that Northeastern Pennsylvania is the third largest area in the state and Bell of Pennsylvania believes in its future. He also explained that the money does not come from the rate payers but is made from the net profits of the company.

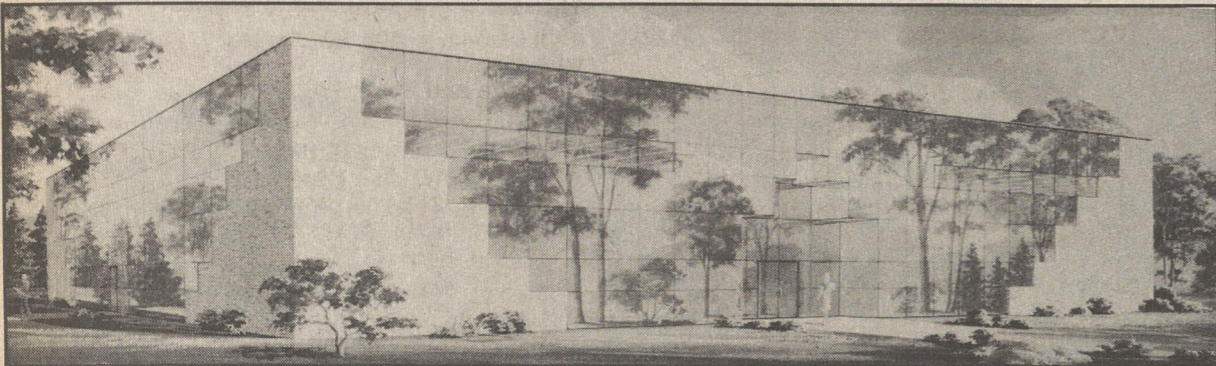
"It has been a long project," said Robinson, "But it became easier as we went forward. The Committee of Economic Growth believes in us and I was at the right place at the right time. Bell of Pennsylvania is learning to survive since the divestiture. The Center of Technology is the type of project Bell of Pennsylvania can do for Northeastern Pennsylvania. The company has supported many programs in



TOM ROBINSON

the past but this is the largest it has ever done.

"There are some excellent technology companies in this area and they have a strong interest in this program," he added. "Like Bell of Pennsylvania, they have a need for graduates of all phases of telecommunications."



### Proposed center

Shown here is an architectural drawing of the proposed center of technology that will be constructed on the Wilkes-Barre Campus of Pennsylvania State University in Lehman. Tom Robinson, a Dallas resident and a manager with Bell of Pennsylvania, was instrumental in securing a \$1 million donation for Penn State, \$600,000 which will be used for the center's construction.

### Dallas Kiwanis Club meets

The Dallas Kiwanis Club members met at Irem Temple Country Club recently. Guest speaker was Gerard Lupien,

Council Executive, Penns Mountains Council, Boys Scouts of America who spoke about the history of scouting since it originated in England.



**Mimmo's PIZZA & RESTAURANT**  
DALLAS SHOPPING CENTER  
DALLAS, PA.  
675-4343 or 675-6565

You'll LOVE our Pizza and Service.  
**FREE DELIVERY**  
MINIMUM DELIVERY ORDER IS \$6.00  
MON. thru THURS.

- NEW YORK STYLE NEAPOLITAN PIZZA
- HEROES
- SICILIAN PIZZA
- SPECIALTIES
- WHITE PIZZA
- DINNERS
- DEEP FRIED SPECIALS

**FREE WITH THIS AD**  
**YOUR CHOICE OF ANY TOPPING**  
**ON ANY SIZE PIE**  
OFFER EXPIRES DEC. 31, 1986

Hours: Mon.-Thurs. 11 a.m. to 10 p.m.; Fri., Sat. 11 a.m.-11 p.m.  
Sun., 12 Noon-10 p.m.



**SWAROVSKI**  
Silver Crystal

Exclusive At  
**design galleries**



The graceful beauty of one of nature's most elegant creations, crafted in 32% full lead Austrian Crystal. Exclusively yours from Swarovski Silver Crystal. Hundreds of designs priced from \$18 (Swan on left).

As you would expect, the complete Swarovski collection is displayed only at Design Galleries — the source for those who want to be remembered by the gifts they give.



**design galleries**  
Wyoming Valley Mall • Wilkes-Barre, PA 18702 — 717-822-6704

limited edition collectibles... the largest selection in Pennsylvania

### Klaboos are wed 40 years

Mr. and Mrs. Clayton M. Klabeo of Dallas recently observed their 40th wedding anniversary with a dinner party with their children.

The Klaboos were married on November 23, 1946 in the Forty Fort Presbyterian Church.

Mr. Klabeo is the son of the late Mr. and Mrs. Luther Klabeo of Pelican Rapids, Min-

nesota. Mrs. Klabeo, the former Frances R. Jacobs, is the daughter of the late Mr. and Mrs. George R. Jacobs of Forty Fort.

The couple has three children, Steven, Larry, and Rosellen; and two grandchildren.



MR. AND MRS. KLABEO

**DYMOND'S FARM MARKET & BAKERY**  
Holiday Headquarters For...

**CHRISTMAS TREES**

- Douglas Fir • Blue Spruce •
- Balsam •




**BEAUTIFUL WREATHS**

- Christmas Candy •

Don't Forget To Order Your Holiday Baked Goods  
**PIES • CAKES • ROLLS • BREAD**  
Try Our New Special Occasion  
Whipped Cream Cakes

**Memorial Hwy., Shavertown**  
**675-1696**

**WHY PAY MORE!!!**

**Levi's Levi's Levi's Levi's**



**LEVI'S**  
MEN'S PRE-WASHED  
**JEAN JACKETS \$28<sup>99</sup>**

MEN'S 505 RED TAG  
**LEVI'S JEANS**  
UN-WASHED PRE-WASHED  
**\$16<sup>95</sup> \$18<sup>95</sup>**

**LEVI'S**  
STUDENT PRE-WASHED **\$17<sup>95</sup>**

BOY'S PRE-WASHED **\$15<sup>95</sup>**

**LEVI'S**  
LADIES' PRE-WASHED **\$19<sup>99</sup>**

**HOOF 'N PAW JEANS**  
100 Yds. Off Dallas Hwy. — Across From Mark II Restaurant  
Main Road, Dallas, PA — 675-4800  
Open: Mon., Tues., Wed. & Sat. 10 - 6; Thurs. & Fri. 10 - 8; Sun. 12 - 4



CHARGE IT  
(MOST STORES)

**Radio Shack**  
DEALER

Prices Slashed  
Just in Time  
For the Holidays!

**CHRISTMAS GIFT SALE!**

**CB With Ch. 9 Priority**  
TRC-474 by Realistic

**Cut \$60**

**79<sup>95</sup> Reg. 139.95**



Give one for fun and safety on the road! Flip a switch to access Emergency Channel 9 instantly. Tone control. #21-1539

**Dual-Power Calculator**  
EC-417 by Radio Shack

**41% Off**

**888 Reg. 14.95**



Great stocking stuffer! 8-digit adjustable LCD display. Auto-switches from solar to battery. #65-562

**Cordless Telephone**  
ET-395 by Radio Shack



**\$30 Off**

**69<sup>95</sup> Reg. 99.95**

A gift they'll use for years to come! Switchable Touch-Tone/pulse dialing. #43-547

**Personal Telephone**  
ET-120 by Radio Shack



**28% Off**

**12<sup>95</sup> Reg. 17.95**

Buy one to give and one to keep! "Hangs up" on any flat surface. Pulse dialing. White, #43-501. Brown, #43-502

**ARTCO ELECTRONICS**  
BACK MOUNTAIN SHOPPING CENTER, Shavertown, PA

OPEN MON. - SAT. 675-2654      A RADIO SHACK DEALER