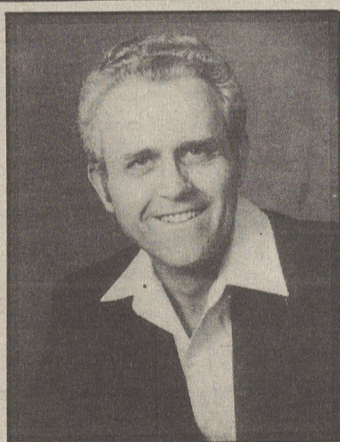


Football '86/Charlot M. Denmon

DALLAS CAPTAINS — From left, first row, Ryan Holthaus, Ed Kwak. Second row, Dale Williams, Scott Francis and Dan Williams.

On the front cover...

1986 DALLAS MOUNTAINEERS — From left, first row, Matt Andrasko, Paul Mihalchik, Lynn Sheehan, Bill Fedrow, Steve Brace, Dale Williams, Ryan Holthaus, Scott Francis, Dan Williams, Ed Kwak, Todd Chamberlain, Mark Chester, Jeff Kehl, Art Morgan. Second row, Tom Charney, Jonathan Wagner, Scott Drasnin, Mike Koprowski, ERic Olsen, Jay Cherup, Bill Janosky, Dave Cooper, Mike WELtichko, Phil George, Scott Horoshko, Mark Mihalchik. Third row, Mark Buss, Walt DelGaudio, Ben Kern, Josh Henry, Clark Van Orden, Ron Post, Scott Starbuck, Shawn Ruth, Bob Barbacci, Chris Lesjak, John Gress. Fourth row, John Boos, Eric Moore, Kyle Boudreaux, Joe Shandra and Jerry Ogurkis. (Football '86 photo by Mark Moran)



**ULTRA CARPET CLEANING
IS NOTED FOR THEIR
ABILITY TO GET
CARPETS CLEAN**

CALL 823-0434 OR 256-3945

Call Rich Metcalf
"I will personally guarantee
your satisfaction"

Union Beverage



"A Complete Beverage Supermarket"

- ☆ Cold Beer
- ☆ Case Beer & Soda
- ☆ Draught Kegs

- ☆ Party Mixers
- ☆ Ice - Snacks - Cigarettes
- ☆ Penna. State Lottery

On Union Street
Next To Liquor Store
Luzerne Shopping Center



Shop & Compare
Phone: 288-0133
Mon.-Sat. 10:00-9:00

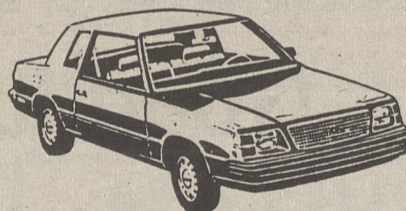
THE DEALS ARE HOT! AT THE "DUKES"

ALL

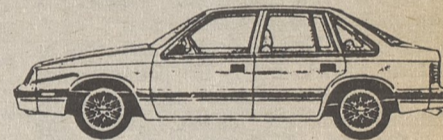
CHRYSLER **86's** PLYMOUTHs

MUST GO

**COME IN — MAKE YOUR BEST DEAL
THEN — TAKE ADVANTAGE OF UP TO \$1500⁰⁰
CASH BACK — OR — LOW RATE FINANCING**



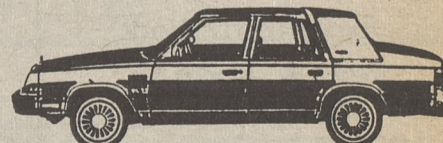
Plymouth Reliant, 2-door



Chrysler LeBaron GTS Premium



Chrysler Fifth Avenue



Chrysler New Yorker

HOWARD "DUKE" ISAACS CHRYSLER — PLYMOUTH

ROUTE 309, LUZERNE-DALLAS, HWY. — TRUCKSVILLE
10 MINUTES FROM DOWNTOWN WILKES-BARRE, TAKE THE CROSS VALLEY TO ROUTE 309

696-1111 or 283-0049

THE ONLY DEAL THE DUKE CAN'T BEAT IS THE ONE HE
DOESN'T KNOW ABOUT . . . P.S. HE TRADES ANYTHING

