

Sports



SANDI DICTON

Diction is top reserve

Sandi Diction, a freshman midfielder from Shavertown, emerged as a top reserve this fall as the Ursinus College field hockey team finished in the Division I Top 20 for the third straight time.

Diction, a former standout at Lake-Lehman High, appeared in 12 games as Ursinus (13-6-1) wound up 15th in the NCAA Division I poll, its ninth Top 20 finish in the 11 years that field hockey rankings have been kept.

Ursinus, a school with 1,200 students and no athletic scholarships, plays an all-Division I schedule in hockey. This fall the Bears rose to No. 6 in October before losing a 2-1 heartbreaker to then top-ranked North Carolina.

As the second reserve off the bench, Diction helped the Ursinus defense hold opponents - including nine Top 20 clubs - to just 0.9 goals per game this fall. She did not have a shot on goal all season.

Last fall, as a senior at Lake-Lehman, Diction set a national high school record with 17 assists and led her club to a district title.

Her role at Ursinus was far less prominent, but no different from most Bear freshmen, even those who later become all-Americans. The Bears have started only one freshman in the past four years.

Pennsylvania program is not new

A muskellunge stocking and propagation program in Pennsylvania is not new. In fact, it dates back to the 19th century. In 1894, 15 large muskellunge were stocked and in 1896 and 1897, 91,000 fry were stocked by the Corry Hatchery. All of these plantings were made in waters within the natural range of the musky - the upper Allegheny River Basin, Lake Erie drainage and Lake Erie itself.

It wasn't until 1953 that the Pennsylvania Fish Commission initiated a major effort to expand the original range of the muskellunge to waters throughout the state.

One of the problems encountered in the 1950s when the new program was struggling to get underway was the difficulty in obtaining and hatching eggs and rearing fry and fingerlings in good numbers.

In 1960, a cooperative research program was initiated to improve production techniques. By 1964, this effort had paid off in a big way. Egg hatching had been increased from five to 82 percent, and fry survival to fingerling sizes of two to eight inches increased to 50 percent.

The next step in the program was to determine whether muskellunge would survive and grow in their new range. This proved to be a particularly difficult problem since, under natural conditions, only one out of every thousand fry survives to the fingerling stage where they can be seen and counted.

The Commission has a valuable

source of ideas and input on all of its boating regulations. The eight-member Boating Advisory Board, five of whom are appointed by the Governor, advises the commission on all matters relating to boating and makes recommendations with regard to all regulations affecting the equipment or operation of boats.

The Commission's regulatory authority also extends to reptiles, amphibians and other aquatic organisms. A Herpetology Advisory Committee, an informal group of herpetologists, was appointed by the Commission's Executive Director to provide their expertise to the Commission on these matters.

According to Dennis Guise, the Fish Commission's Chief Counsel, "Many Commission regulations, particularly the special fishing and boating regulations directed at specific waterways, are the direct result of suggestions from interested anglers and boaters."

When the Commission's professional staff feels an idea for a

regulation has merit it is brought before the ten-member Pennsylvania Fish Commission at a meeting open to the public. If the Commission considers the proposal worthy of public review and comment, it authorizes its publication as a notice of proposed rulemaking. The Fish Commission's Chief Counsel and the Office of the Attorney General then review the proposed regulation for legal concerns and the Office of Budget and Administration assesses its fiscal impact. After these required reviews are completed, the proposed regulation is published as a notice of proposed rulemaking in the Pennsylvania Bulletin. There is a 30-day period when suggestions and public comment are invited.

The proposed regulation is again considered by the members of the Fish Commission after they have reviewed the comments received from their constituents—the anglers and boaters of Pennsylvania. The Commission then votes to either

adopt or reject the new regulation. If adopted, the regulation is again circulated for required legal and technical reviews and must once again be published in the Pennsylvania Bulletin.

What's the Pennsylvania Fish Commission's philosophy with regard to rules and regulations? The fewer, the better. The Commission considers and adopts only those regulations that it finds necessary and appropriate for better fishing and boating in Pennsylvania.

So read your summary booklets and follow the rules and regulations. Not only will you stay out of trouble, but you'll be helping to provide better fishing and boating for everyone.

The plantings, however, produced some excellent results. An early spring trapnet catch in 1966 on relatively small Hills Creek Lake in Tioga County, which was first stocked in 1958, produced five legal muskellunge in one night, one of which exceeded 42 inches. But per-

haps the best news to the Commission's biologists and fish culturists was the returns from muskellunge introduced in the Susquehanna River below Harrisburg in 1958. The Falmouth muskellunge fishery has gained a national reputation for its excellence.

The Commission's continuing research program on muskellunge culture is paying off annually in more fish stocked and more caught in more waters of the Commonwealth.

According to Sheryl Hood, Chief of the Commission's Warmwater Production Section, "Through continued dry diet testing and improved rearing techniques, it has been demonstrated that muskellunge can be successfully reared on an artificial diet."

In recent years the Pennsylvania Fish Commission annually stocks between 75,000 and 90,000 six to 10-inch muskellunge fingerlings in selected lakes and rivers of the Commonwealth.

DALLAS CENTRE HARDWARE

PRO CHRISTMAS GIFT SAVERS SALE

Every brand new 1986 Chevrolet, Buick, Pontiac (trucks included) at:

\$49 OVER FACTORY INVOICE
New concept in auto buying. No gimmicks, no pressure, no dickering. You see the factory invoice. No prep or other charges added. Not a limited offer. No deposit required. Free rustproofing, paint sealant, fabricare and full tank of gas. For additional information phone, write or visit.

KLICK LEWIS INC.
720 E. MAIN ST.
PALMYRA, PA 17078
717-838-1353 or PA only
1-800-222-1973

Is Jack Frost living inside your home?
See page 14

We Have The Lowest Prices In The Valley
"WE WILL NOT BE UNDERSOLD"
Freestyle • BMX • Racing
Touring • Cruising • Mountain Bikes
WE HAVE THEM ALL!



500 BICYCLES ON DISPLAY
40 DIFFERENT COMPANIES
TO CHOOSE FROM!

Repairs - Parts & Accessories For All Brands
Custom Built to Your Specs.

FREE STYLE BICYCLES \$139

HUTCH PRO RIDER OR PRO STREET BICYCLES \$175

OLD MILL BICYCLES

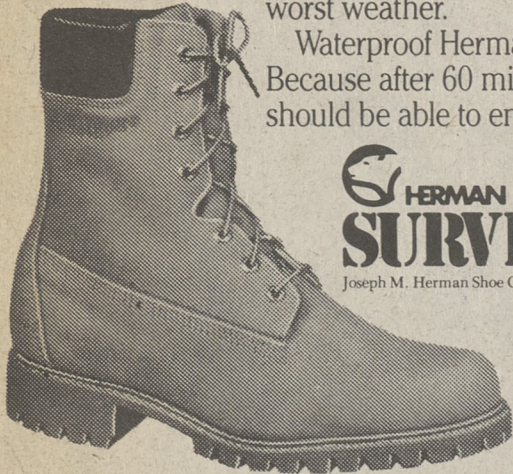
320 EXETER AVE., W. PITTSBURGH • 655-4262

Man didn't spend 60 million years evolving from the sea, just to end up with wet feet.

The choice is simple. You can wear boots that leak or boots that don't.

For those who prefer the latter, we recommend Herman Survivors. Our insulated, waterproof Survivors are designed to keep you dry and comfortable in even the worst weather.

Waterproof Herman Survivors. Because after 60 million years man should be able to enjoy nice, dry feet.



SHERMAN SURVIVORS
Joseph M. Herman Shoe Company, Cambridge, MA © 1985

SPECIAL \$59⁹⁵



Mountaintop 474-6051

Route 309, Dallas 675-2029

Tunkhannock 826-3616

HOURS: Mon.-Fri. 9:30 - 9 p.m. Saturday 9:30 - 6 p.m.

OPEN SUNDAY 12 - 5 P.M.

89⁹⁹
BLACK & DECKER
BENCH TOP 8" TABLE SAW
Quiet 1 HP induction motor. flat cutting table with extension wings for large jobs. Miter gauge, fence and more! 9419(61)

18⁹⁹
SKIL
"SKIL TWIST" CORDLESS SCREWDRIVER
Unique power screwdriver. Drives and removes a wide range of screws. Convenient. Phillips/slotted bit included. Stores in handy recharging stand. 2105(7)

Scotch
Magic Transparent Tape
3M
Rebate
4 Rolls Pro Sale Price
-200 Mfr's. Rebate*
No Cost After Rebate
*See in store coupon for details

1/2" OR 3/4" SCOTCH BRAND MAGIC TRANSPARENT TAPE
Choose from 1/2" or 3/4" widths. A must for holiday wrapping...dispenses easily, holds securely and never yellows! 104(162)105(163)

PRO bargain
EVEREADY
OF THE MONTH
YOUR CHOICE \$1.59
ENERGIZER BATTERIES
Choose 2 "C", 2 "D" or one 9-volt battery. For flashlights, radio, toys. E93BP-2/E95BP-2/522BP(1,2,3) "AA" BATTERIES 4 per pkg. E91BP-4(4). 2¹⁹

8⁹⁹
Lufkin
"UNLOCK" POWER TAPE
Easy to read, non-glare, "write on-wipe off" epoxy coated steel blade. Includes toggle lock and belt clip. 8425(69)

999
RECYCLE
HEAVY DUTY STAPLE GUN/TACKER
Jam-proof design. All steel construction. Chrome finish. T50(80)

49⁹⁷
shop-vac
6-GAL. WET/DRY VACUUM
Vacuums wet or dry. Shuts off when full. Hose, extension wands, wet/dry nozzle four free accessory tools included. 700-02-62(129)

6 ft.
3 outlet powered household extension cord
CAROL
EXTENSION CORDS
Handy, 3 outlet cord with safety lock. UL listed. Choose from brown or ivory.
• 6 FT. CORD 00206(165) 00306(166)..... 69¢
• 8 FT. CORD 00209(167) 00309(168)..... 89¢
• 15 FT. CORD 00215(169) 00315(170)..... \$1.19

999
VERMONT AMERICAN
ALL PURPOSE TOOL BOX
Lift out tray. Hip roof design. Plated handle. Lockable draw bolt. Made in U.S.A. 48-89219(68)

399
TOOKING
LIGHT-WEIGHT CAMPING AXE
Sportsman's axe, 20 oz., fully polished steel head and tubular steel handle with rubber vinyl grip. Includes synthetic sheath. Made in Taiwan. TK2471-001(6)

1399
STANLEY
STEELMASTER CURVED CLAW 18 OZ. HAMMER
High carbon steel head is heat treated for extra strength. Octagon head with rim tempered™ face, vinyl grip steel/chrome plated tubular handle. 51-031RM(74)

1699
"DURABIL"
WORK APRON
2-bag apron with 12 pockets and slots. Ideal gift for the do-it-yourselfer. Simulated leather. VP1527(76)

Rebate
1989 Pro Sale Price
-300 Mfr's. Rebate*
1689 Your Final Cost
*See in store coupon for details

RECYCLE
ELECTRIC STAPLE GUN
Has on/off safety lock with easy-squeeze trigger operation! ET50(79)



Due to physical size, merchandising policies and manufacturer's shortages, some stores may be unable to stock all items shown. However, most items can be ordered special by your PRO Dealer assuring you of the sale price featured. We reserve the right to limit quantities.

DALLAS CENTRE HARDWARE

44 MAIN STREET, DALLAS, PA. 675-4104

Open Mon.-Fri. 8-7 P.M., Sat. 8-5 P.M., Sun. Noon-5 P.M.
Free Delivery in Back Mountain Area

"PARKING AND REAR ENTRANCE AVAILABLE IN BACK OF STORE"