

How to pick a good auto shop

With the arrival of autumn, it's not unusual to see large numbers of do-it-yourselfers putting on their sweatshirts and jeans, heading out to auto supply shops, and getting their wrenches ready for an afternoon of preventive car maintenance and winterizing.

Such maintenance, whether done by a competent car owner or an established professional, is an important ingredient in extending your car's life, everyone agrees.

But some automobile repair and service jobs are beyond the technical abilities of Saturday afternoon mechanics. And even the simple jobs are not always inviting; after all, there is always football, or autumn walks or camping . . . whatever! Face it, you'd better find a good auto repair shop.

Locating good automotive help used to be frustrating, but much of the guesswork has been eliminated. There is an organization, highly respected in the automotive industry yet still relatively unknown among customers, that has devoted itself to improving the quality of automotive service and repair throughout the nation.

The National Institute of Automotive Service Excellence (ASE), founded in 1972 by various segments of

the auto industry, is in the business of certifying the competency of auto and truck technicians.

Says ASE President Ronald Weiner, "Don't call; these pros and 'mechanics' - their skill, dedication, and eagerness to master the new, high-tech components make the term 'technician' much more fitting."

ASE is an independent, non-profit group which gives voluntary certification exams to technicians. The tests are offered twice a year in over 300 locations.

ASE devotes much energy to ensuring the fairness and accuracy of the exams. ASE's Director of technical services William Kersten has this to say about the exams: "They are a tough, yet fair measure of a technician's skill and knowledge."

"The written tests correlate to real-world work situ-

ations; any question which seems tricky or overly theoretical is eliminated long before the actual tests are administered to the technicians."

The tests cover the full gamut of skills, basic technical knowledge, repair knowledge and skill, and testing and diagnostic knowledge and skill.

Businesses that employ ASE Certified technicians usually display the ASE outdoor sign. It's a large white sign with a distinctive blue seal on to which are printed the initials, A, S and E.

And the message at the bottom of the sign says it all: "We employ technicians certified by the National Institute for Automotive Service Excellence. Let us show you their credentials."

ASE does not certify places of business, only the technicians who work there.

Automobile City is Nissan

Automobile City, a division of Fred Schuler, Inc. is a Nissan dealer and provides service on all types of Nissan automobiles.

With two locations at 1280 Sans Souci Highway and 206 Carey Ave., Wilkes-Barre, Automobile City provides both parts and service. In

existence for 34 years, 16 of them as a Nissan dealer, Automobile City is a family owned business and owned by the Schuler Family.

Mary Schuler is president of the company while Frederick Schuler serves as general manager and Dave Schuler is sales manager.



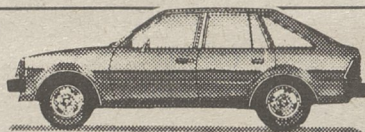
SIGN TO WATCH FOR — Auto technicians certified by the National Institute for Automotive Service Excellence can be found at repair facilities which display the blue and white ASE outdoor sign.

Puzzled About Consumer Loan Rates? . . . We Invite You To Compare—In Fact, We Want You To Compare. Here Are Some Examples Of Our Rates:

EXAMPLE: NEW CARS

11.50% APR

10% DOWN-48 MONTH TERM
\$7,000 — \$182.62 Monthly Payment



EXAMPLE: USED CARS

12.50% APR

15% DOWN-36 MONTH TERM
\$5,000 — \$167.27 Monthly Payment



PERSONAL (UNSECURED)

12 Months: **12.50% APR**
Example: \$1,000 — \$88.76 Payment

24 Months: **13.00% APR**
Example: \$2,000 — \$95.08 Payment

36 Months: **13.00% APR**
Example: \$3,000 — \$101.02 Payment

HOME IMPROVEMENT (SECURED)

12 Months: **12.25% APR**
Example: \$1,500 — \$133.45 Payment

24 Months: **12.50% APR**
Example: \$2,100 — \$99.35 Payment

36 Months: **12.50% APR**
Example: \$3,200 — \$107.05 Payment

**THERE ARE NO UP-FRONT FEES
ANSWERS USUALLY WITHIN 24 HOURS**

CALL 288-4511

Ask For Mike Boyle or Mike Mondy
OR STOP IN AT

THE LUZERNE NATIONAL BANK

118 MAIN ST., LUZERNE
801 MAIN ST., SWOYERSVILLE

Remember To Open Your Vacation & Tax Club Now. Earn 5% Interest

Member
F.D.I.C.



Equal Housing
Lender

Equal Opportunity
Lender



The Isuzu Truck That Thinks It's A Family Wagon.

And why shouldn't it? With an optional rear bench seat, it'll carry a family of five comfortably. Its reclining, front bucket seats, and optional air conditioning and AM/FM stereo radio provide the same creature comforts as a family wagon. With over 45 cubic feet of rear cargo space (79 without the rear seat) it'll carry enough groceries to feed a family for a month. And its 4WD will help you get those groceries home whatever the road conditions may be.

Trooper II, the new truck, uh, family wagon, from Isuzu.

With A Low, Low \$9449.00 Base Price



Abington Chevrolet Isuzu

927 North State Street, Clarks Summit
586-1195

961-5863