

BUY, SELL, TRADE  
OR RENT THROUGH

THE DALLAS POST

# CLASSIFIEDS

CALL OUR AD-VISORS 675-5211 DEADLINE FRIDAY 5 P.M.

ONE CALL DOES IT ALL  
FOR 3 MONTHS  
PERSONAL ITEMS

\$1<sup>00</sup> 20 words  
VALUE LESS THAN \$500.00

\$2<sup>50</sup> 20 words  
VALUE MORE THAN \$500.00  
BUSINESS RATES AVAILABLE

FOR SALE

**Evinrude Outboard Motor** Fleetwin model, (as is). Asking \$200. 287-0286. 2-tfn-P  
**Burnham Corporation Furnace.** Hand fired or conversion 2 oil burner guns and grates. 287-0286. 2-tfn-P  
**4 Trail Boss Radial Tires** 33-1250 x 15, \$400 neg. 333-4156. 3-tfn-P  
**Storm Windows** (1) 25x26, (3) 25x50, (4) 25x56 \$10. ea. 675-3627. 3-tfn-P  
**Girl's 2 Piece Green Ski Suit.** Size 10, (children's size), good cond. \$40. 675-2311. 46-tfn-P  
**Two 1 Bag Cement Motor Mixers.** Large buggy for concrete pour. Heater for garage. 123 Simpson St., Swyersville. 7-tfn-P  
**Oil Drum 250 gal., exc. cond.** \$35; 16" lite weight Craftsman chain saw. \$80. 696-2870. 8-tfn-P  
**Couch & Swivel Chair** to match almost new \$300. Must sell, moving out of state. 287-5239. 8-tfn-P

FOR SALE

**Hay for Sale.** 500 bales, first cutting. Call 288-8525. 8-tfn-P  
**Firewood for Sale** Seasoned oak, no splitting. 675-4073. 9-4-P  
**Meyers Snow Plow** 675-4073. 9-tfn-P  
**Conn Organ 2** keyboards with pedals, perfect for lessons, sold new for over \$1500. Good cond. \$225. 675-4911. 47-tfn-P  
**Brunswick Slate Bumper Pool Table.** New cond. 3'x5'. Leather grain top. Converts to dining table. Cost \$600, will sell for \$350. 675-1886. 49-tfn-P  
**Firewood**—Seasoned hardwood, cut and split. 477-5361. 52-12-P  
**Sectional Gold Satin Sofa.** \$800; marble-topped end tables, \$150 ea.; 2 lamps at \$125. ea.; gold electric wall fixture with 5 candles and black drops, \$135. Call 822-2502. 52-tfn-P  
**Boxes, Moving Cartons.** Various sizes. Low price. 675-5785. 52-tfn-P

FOR SALE

**Pr F78x15" Steel Belted Snow Tires** mounted on Chrysler wheels, also fit American Motors, less than 150 miles \$75. firm; 8-speed Osterizer mixer, 5 cup stainless steel container, \$12; Pro 250 2 speed hair dryer \$5.; hand operated meat slicer like new \$20. Roger semi-automatic CO2 cartridge 100 shot-pistol-nov. boxed \$25. 696-2542. 47-tfn-P  
**Trailer**—4'x7' removable sides. Ideal for hauling wood, A-1 cond. \$385. 675-0551. 48-tfn-P  
**Stained Glass Chandelier** Amber, ruby & gold hand leaded. \$25. 675-2261. 48-tfn-P  
**Kitchen Cabinets** Green formica, like new. 17" top cabinets, 12" bottom cabinets, L-shaped kitchen includes GE stove with self cleaning oven and matching hood. Hot Point dishwasher and 25" Kohler sink. 693-3637 or 693-0137. 48-tfn-P

FOR SALE

**Shenadoah** Coal or wood burner \$185. 823-0710. 49-tfn-P  
**Bear Crafter Ski Rack SR-11,** holds 4 pair of skies, with lock. Almost new \$55. Ask for Ron, 639-1560. 1-tfn-P  
**2 BF Goodrich Steel Belted Radial Tires** 185-70 R14's \$35 each. 639-1560 ask for Ron. 1-tfn-P  
**Brand New Security Dead Bolt Yale Lock** Will install for \$30. 824-1388. 1-tfn-P  
**Christmas Trees.** Butternuts and walnuts, handmade Christmas articles, mittens, candle. Stereo, Admiral Color TV needs repairs, old dishes. 675-3057.  
**Box Spring & Mattress** \$10 ea. 824-2406. 46-tfn-P  
**Metal Authentic Ice Cream Parlor Chairs,** vases, and dishes. Perfect cond. 283-1732. 46-tfn-P  
**Beautiful Tatted Lace Edge Sheets & Pillow Cases,** linen tablecloths and napkins to match. Reasonable. 283-1732. 46-tfn-P

FOR SALE

**Wooden Storm Door.** screen and glass inserts 2'8" x 6'8"; Aluminum screen door, glass and screen inserts. 2'6" x 6'7". 735-2877 after 5 p.m. 46-tfn-P  
**Cabbage Patch Dolls** \$25; Tiny Tot Dolls \$35; Variety of wooden folk art items. 675-2377. 46-tfn-P  
**Nordica Ski Boots** children's size 4, Sprint Model Exc. cond. \$40. 675-2311 46-tfn-P  
**Men's White Stag 2** piece navy ski suit. Exc. cond. Size small, \$75. 675-2311. 46-tfn-P  
**Stereo-Record Player** in beautiful Early American cabinet. Reasonable. 696-2036. 48-tfn-P  
**Winter Coats,** womens and girls, \$5 to \$10. 288-0932. 48-tfn-P  
**Poloroid Sun 600 LMS Camera.** Never used \$25. Call 675-2877 after 5 p.m. 46-tfn-P  
**195 cm Dynastar CSX Model Skis** with Salomon 737 bindings. Used two seasons. Must sell. \$175. 675-2311. 46-tfn-P

FOR SALE

**Riedell Ice Skates,** black, children's size 9, used twice \$15. Call after 3 p.m. 696-2118. 46-tfn-P  
**Raichle Ski Boots** Turbo model, men's size 10. Used one season \$75. 675-2311. 46-tfn-P  
**WORK WANTED**  
**Mature Nurses Aide** desires part-time home care duty in Back Mountain area. 675-1647. 6-4-P  
**Housework Wanted.** Temporary or reg. basis. Exc. references. 477-5591. 7-4-P  
**Carpentry, General Construction,** interior and exterior. No jobs too big or small. Free estimates, 30 yrs. exp. 675-2620 after 12 p.m. 8-4-P  
**Handyman Work** Wanted painting, etc. Call between 4 and 6 p.m. 696-4756. 8-4-P  
**Low Cost Painting**—Exterior and interior. One man operation and repairs. Save money. first class work. 288-4339. 9-4-P

HELP WANTED

**Babysitter Wanted** in my home near Harveys Lake for a 4 mo. old baby and 6 year old after school, 8 a.m. to 5:30 p.m. Monday through Friday. References required. Call after 6 p.m. 639-1457. 6-4-P  
**GOVERNMENT JOBS.** \$15,000 - \$50,000 yr. possible. All occupations. Call 1-805-687-6000 Ext. R-6026 to find out how. 6-4-P  
**Mature Woman** to babysit 2 mos. old baby. Mon. and Fri. mornings; occasional evenings. Must have own transportation. References. Call for interview. 675-8133. 7-4-P  
**Married Couple** Good health, to live in country with active elderly lady. Some driving, cooking, light housekeeping, gardening, indoor-outdoor maintenance, separate quarters-own garden plot. References. P.O. Box 3, Waverly, PA. 18471. 9-1-P

HELP WANTED

**Housekeeper**—Full time. Mature, reliable person. References required. 696-4110. 6-4-P  
**Shavertown Area**—Simple weekly lawn and garden care. April through November. \$20.00 week minimum. Mature man preferred. 696-2321 evenings. 9-4-P  
**INSTRUCTION**  
**Tutor**—Experienced elementary teacher will tutor all elementary subjects. Call 696-2512 after 7 p.m. 9-2-P  
**RECREATIONAL**  
**1975 Outboard Motor** overhauled, air cooled \$275. 477-3031. 45-tfn-P  
**Pop-up Camper** Sleeps 8, stove, sink, ice box, spare tire, \$450. 477-5874. 46-tfn-P  
**Skiboose Snowmobile** Exc. cond. \$125. 675-2744 or 675-1941. 48-tfn-P  
**74" Electra Polaris**—\$700. 822-4471. 2-tfn-P  
**74" Colt Polaris**—Good running cond. \$500. 822-4471. 2-tfn-P  
**1981 Coachman Deluxe,** 29 ft. long, full length awning. Exc. cond. used very little, self contained. 675-3906. 3-tfn-P  
**'72 Artic Cat Puma 340,** \$450; '74 Scorpion Super Stinger 440, \$650. Both sleds garaged with covers. Both for \$1000. 654-1551. 4-tfn-P  
**Sailboat With Trailer**—13' Daysailer, 5' beam, main and jib. Exc. cond. \$1100. 675-1598 8-tfn-P  
**1982 Coleman Wrangler** Slide-In for pickup truck. Sleeps 4, stove, sink, icebox, table, used only 3 days. Good cond. 779-9842 or 287-9979. 8-tfn-P  
**Self-Supporting Camper** 675-4073. 9-tfn-P

SERVICES

**Harry Ashford Plastering**—Complete or patchwork, swirl ceilings, paint work. I do small and big plastering jobs. 30 yrs. exp. Ref. furnished 823-5583. 8-4-P  
**MUSIC MERCHANDISE**  
**Spinet-Console Piano Bargain Wanted:** Responsible party to take over low monthly payments on spinet piano. Can be seen locally. Write Credit Manager: P.O. Box 33, Friedens, PA 15541. 9-3-P  
**FOR RENT**  
**3 Room Apt.** and bath. Wall to wall carpet in livingroom. Hardwood floor in bedroom. Country kitchen with refrigerator, stove, washer and dryer. Draperies included. 333-4517. 7-3-P  
**2 Bedroom House** for rent, with beach privileges. Rent, utilities, security, and references required. Call 639-5030. 8-tfn-P

MOTORCYCLES

**1977 Yamaha 250 D.** 5225 actual miles, exc. cond. Full face helmet included \$550. 639-1329 after 6; weekends 9 to 9. 8-tfn-P  
**1980 Honda 750** Best offer. 675-3640. 9-tfn-P

MOBILE HOME

**Mobile Home Axle** with wheels and springs \$45. 675-3076 after 5 p.m. 4-tfn-P  
**12x60 Mobile Home,** 2 bedrooms, 2 full bathrooms, washer-dryer hookup, extensive remodeling just completed. Unoccupied in park. \$6295. Call Russ at 639-5993. 8-4-P

TRUCKS

**1979 F100 Ford Pickup** - mechanically very good cond. New battery, clutch. No cancer. Interior exc. cond., rubber very good cond. 8 ft. box. \$1,750. 283-1629. 45-tfn-P  
**1974 International 4** wheel drive, 4 speed, utility body, p.s., p.b., ¾ ton V8-\$1,200. 256-3355 or 825-7340. 47-tfn-P  
**1977 Dodge Power Wagon** 4x4, 4 wh. drive train, body good, serious inquiries only. Asking \$3500. 675-3966 or 675-1218. 51-tfn-P  
**1980 Renegade CJ5 Jeep,** good cond. many extras, \$5700. 675-2629. 3-tfn-P  
**1974 Blue Ram Charger** 4 wheel drive, needs body work \$1500 as is 824-4289. 3-tfn-P  
**1980 Jeep CJ 7,** Renegade package, V-6, p.s., p.b., hard top, and soft top included. 639-1364 after 7 p.m. 3-tfn-P  
**1972 Bronco 302,** 3 spd., radial tires, lockout hubs, tinted windows, new exhaust system, \$2,300. 477-2553. 5-tfn-P  
**1968 International Scout,** Meyers Hydraulic lift and plow. No title. runs \$300. 675-4909. 8-tfn-P  
**1969 Scout 4** wheel drive, V-8, good shape, few extra parts, needs paint job, \$595. 696-3766. 8-tfn-P  
**1982 Toyota Pickup** with cap, exc. cond., AM-FM cassette, 4 reg. and 2 snow tires, 25,000 miles, \$5,000. 675-8711. 8-tfn-P

MISCELLANEOUS

**Plaster Craft** whitewear supplies. 287-6517. 46-tfn-P  
**Florida Bus Trip.** Apr. 13-20. Stop overnight each way, in N. Carolina. 7 breakfasts, 4 dinners. Epcot, Cypress Gardens, 2 days at Tampa Busch Gardens. \$320. Call 288-1440. 8-3-P  
**REAL ESTATE**  
**Mansfield, Pa.**—20 Acres & Mobile home, completely furnished. Water, electric, and septic system, 1555 road frontage. Good hunting and fishing. Must sacrifice due to ill health. Call 639-2605 after 5 p.m. 45-tfn-P  
**LOST & FOUND**  
**Found Puppy,** cream and white, March 9 on Carverton Rd., Trucksville. 639-1698 after 4 p.m. 9-4-P  
**ANIMALS**  
**AKC Poodle** Apricot colored. Stud Service. 675-3057. 46-tfn-P  
**Horse Jumps;** show and practice, have an advantage this summer. Call 826-0238. 8-tfn-P  
**Springer Spaniel Pups** \$100. Call after 6 p.m. 388-2750. 9-2-P  
**FREE**  
**Free** Mother border-line Collie Scottish sheep dog. Very good with children, friendly. Father, golden retriever (we think), one beige male, 2 black and white males. Call 639-2605 after 5 p.m. 8-4-P  
**8 Puppies Free** to good home. Mother has very good traits. Wormed and ready to go. Seven weeks old. 333-4858. 9-4-P  
**Free Puppies, Lab.**—Setter mix, 6 wks. old, paper trained. 675-2883. 9-4-P  
**AUTO PARTS**  
**1973-76 Blazer,** new left quarter panel, paid \$275. will sell for \$225; new factory rocker panels, left and right, paid \$65 ea. will sell for \$45 ea.; fiberglass roof, \$50. Call 675-2784. 48-tfn-P  
**3 L-78x15 Tracker P-G Mud & Snow Tires.** Off Jeep. Good cond. 639-1364 after 7 p.m. 3-tfn-P

# VALLEY CHEVROLET

355 MARKET ST., KINGSTON, PA.

288-5474

Is The Undisputed No. 1  
CHEVROLET DEALER  
IN NORTHEASTERN PA.

WE WILL NOT BE  
KNOWINGLY UNDERSOLD

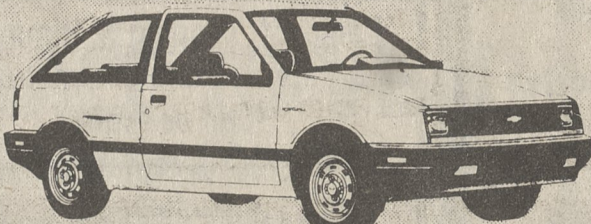
'85 CHEVETTE 2-DR. HATCHBACK



Tinted Glass, Color Keyed Floor Mats, Front and Rear, Rear Window Defogger, LH Sport Mirror, 1.6 Liter Engine, Auto Trans., Exterior Sport Decor, Silver Metallic, Cloth Bucket Seats. Stock No. 266

AS LOW AS \$5999

'85 SPECTRUM 2-DR. HATCHBACK

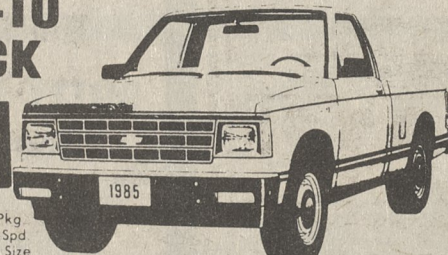


Right Hand Remote Outside Mirror, 1.5 Liter Engine, Five-Speed Manual Transmission, Steel Belted Radial Tires, Front Wheel Drive, Power Brakes, Tinted Glass, Rock and Pinion Steering, Bucket Seats, Bodyside Moldings. Stock No. 282

AS LOW AS \$6149

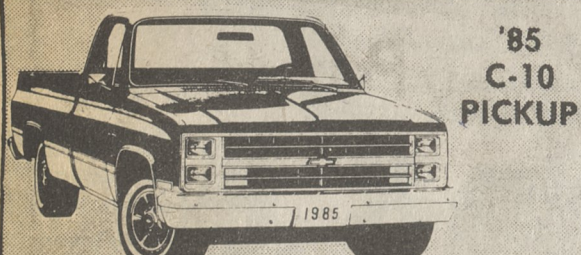
'85 S-10 TRUCK

8.8% A.P.R.



1000 Lb. Payload Pkg. 2.5 Liter, EFI, 4 Spd. Manual Trans., Full Size Spare Tire, Vinyl Bench Seat Stock No. K55531

AS LOW AS \$6599



'85 C-10 PICKUP

4.3 Liter V-6, 3-Speed Manual Transmission, Power Steering, AM Radio, Power Brakes, Gauges, HD Shocks, Rear Bumper. Stock No. 551

AS LOW AS \$7895

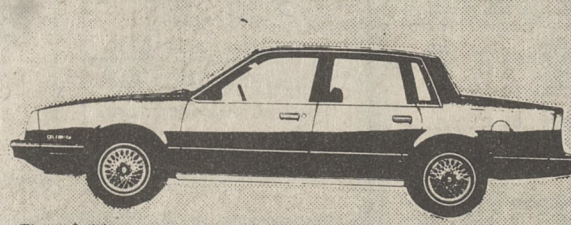
'85 CAVALIER CS 4-DOOR SEDAN



2.0 Liter EFI, Auto Trans. PS, Tilt Steering Wheel, Rear Window Defogger, Tinted Glass, Sport Mirrors, Wheel Trim Rings, AM, FM Stereo Radio, Plus Much More. Stock No. 186

AS LOW AS \$7997

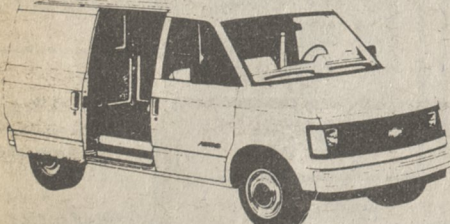
'85 CELEBRITY 4-DOOR SEDAN



Tinted Glass, Rear Window Defogger, 2.5 Liter EFI, Auto Trans., Tilt Steering Wheel, Dual Horns, Rally Wheels, Exterior Molding Pkg., Plus Much More. Stock No. 168.

AS LOW AS \$8899

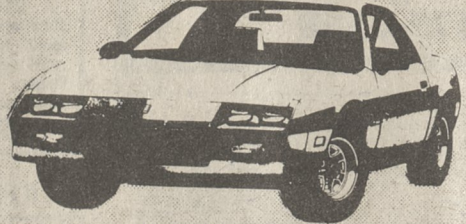
'85 ASTRO CARGO VAN



Tinted Glass, 4.3 Liter V6 Eng. 4 Spd. Auto Trans. w/ Overdrive, 27 Gal. Fuel Tank, Tilt Steering Wheel, Wheel Trim Rings, AM Radio, 1700 Lbs. Payload Pkg. Stock No. 340

AS LOW AS \$9499

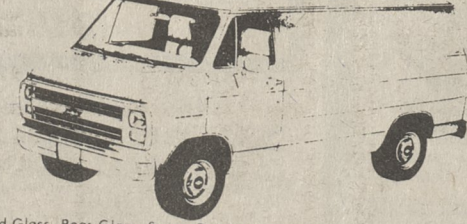
'85 CAMARO 2-DR. SPORT COUPE



Tinted Glass, Body Side Moldings, Rear Defogger, Sport Mirrors, Rear Spoiler, 2.8 Liter MFI V6, Auto Trans. w/Overdrive, Tilt Wheel, AM/FM Stereo Radio, Rally Wheels, Plus Much More. Stock No. 139.

AS LOW AS \$9995

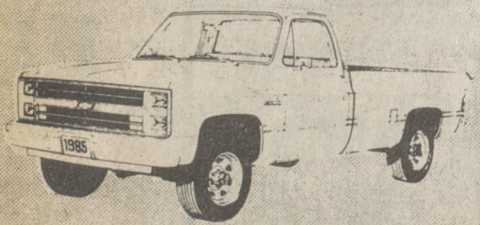
'85 CHEVY G-10 VAN



Tinted Glass, Rear Glass, Swing Out Side Doors, H.D. Rear Springs, H.D. Power Brakes, 5.0 Liter V-8 Eng. 4 Spd. Auto Trans. w/ Overdrive, Tilt Wheel, P.S. Rail, Wheels. Stock No. 491

AS LOW AS \$10,485

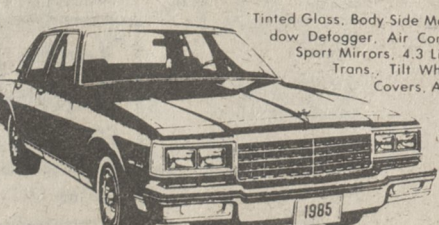
'85 K-10 4x4 PICKUP TRUCK



5.0 Liter V8 Engine, 4-Speed Auto. Trans. w/ Overdrive, Tilt Steering Wheel, Rally Wheels, Cargo Area Lamp, Gauges, R. Step Bumper, Bench Seats. Stock No. 353.

AS LOW AS \$10,975

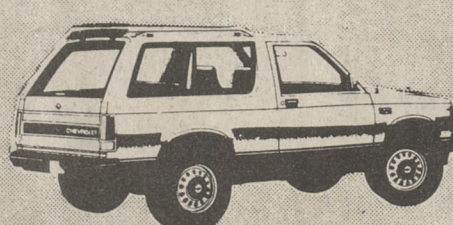
'85 CAPRICE CLASSIC 4-DR. SEDAN



Tinted Glass, Body Side Moldings, Rear Window Defogger, Air Cond., Twin Remote Sport Mirrors, 4.3 Liter EFI V6, Auto Trans., Tilt Wheel, Sport Wheel Covers, Auxiliary Lighting, AM, FM Radio. Stock No. 322

SAVE \$1255  
AS LOW AS \$10,893

'85 S-10 BLAZER



Folding Rear Seat, Tailgate Body, 2.8 Liter V6 Engine, 5-Speed Manual Trans. w/Overdrive, 30-Gal. Fuel Tank, Tilt Steering Wheel, Power Steering, Wheel Trim Rings, Full Size Spare Tire, Gauges w/Trip Odometer. Stock No. 561.

AS LOW AS \$10,999

Tags, Taxes, Rustproofing Not Included